

We reserve all rights in this document and in the information contained therein. Reproduction, use or disclosure to third parties without express authority is strictly forbidden. © ABB 19

Pos. Läge	R connects förbinder	H connects förbinder
13	13-14	2-15
12A		3-15
12		4-15
11A		5-15
11		6-15
10		7-15
9A		8-15
9		9-15
8A		10-15
8		11-15
7	12-14	13-15
7A		1-15
6		2-15
6A		3-15
5		4-15
5A		5-15
4		6-15
4A		7-15
3		8-15
2		9-15
2A	10-15	
1		

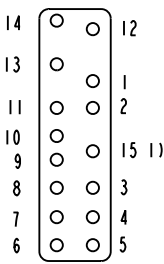
A position with letter is a through position and gives the same voltage as the normal position.

Läge med bokstav är ett genomloppsläge och ger samma spänning som normalläget.

1) Connections between the terminals 15 of the three phases are included in the star-point type.

Förbindningar mellan uttag 15 i de tre faserna ingår i nollpunktsutförandet.

Terminal board  
Plint



Section A-A  
Sektion A-A

On-load tap-changer type UZED., UZFD., 13 tap positions, coarse/fine switching.

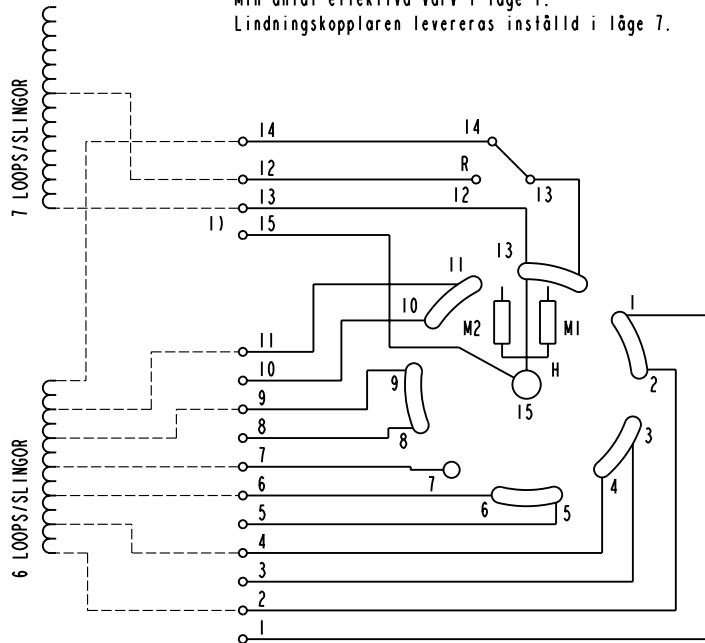
Min effective No. of turns in pos. 1.

The tap-changer is delivered set in pos. 7.

Lindningskopplare typ UZED., UZFD., 13 lägen, grov/fin-koppling.

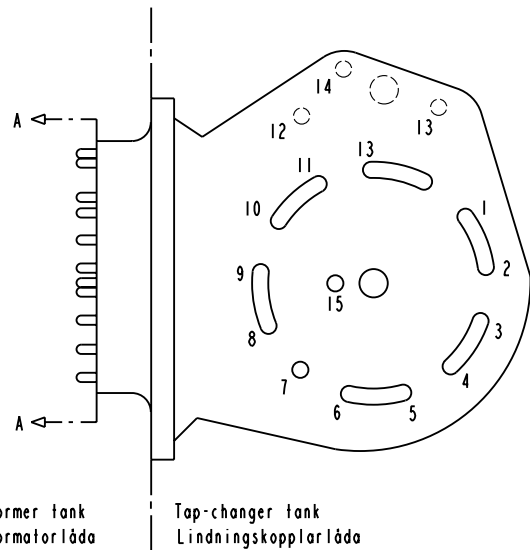
Min antal effektiva varv i läge 1.

Lindningskopplaren levereras inställd i läge 7.



The tap-changer is shown in pos. 7  
Lindningskopplaren visad i läge 7

- R Change-over selector  
Grov/fin-omkopplare
- H Main contact  
Huvudkontakt
- M1, M2 Transition contacts  
Motståndskontakter



Transformer tank  
Transformatorlåda

Tap-changer tank  
Lindningskopplarlåda

Sheet	Cont
Year	Week
Dept	
Rev In	Revision
Appd	Year Week
Accepted by	Accepted for prod by
Design checked by	Drawn by
Design checked by	Issued by Dept Year Week



Asea Brown Boveri

Description (English)  
CONNECTION DIAGRAM

Description (own language)  
KOPPLINGSSCHEMA

DATA ORIGINAL

File name  
0398-1

Lang Sheet

1

Rev In Cont

-

5492 0398-1