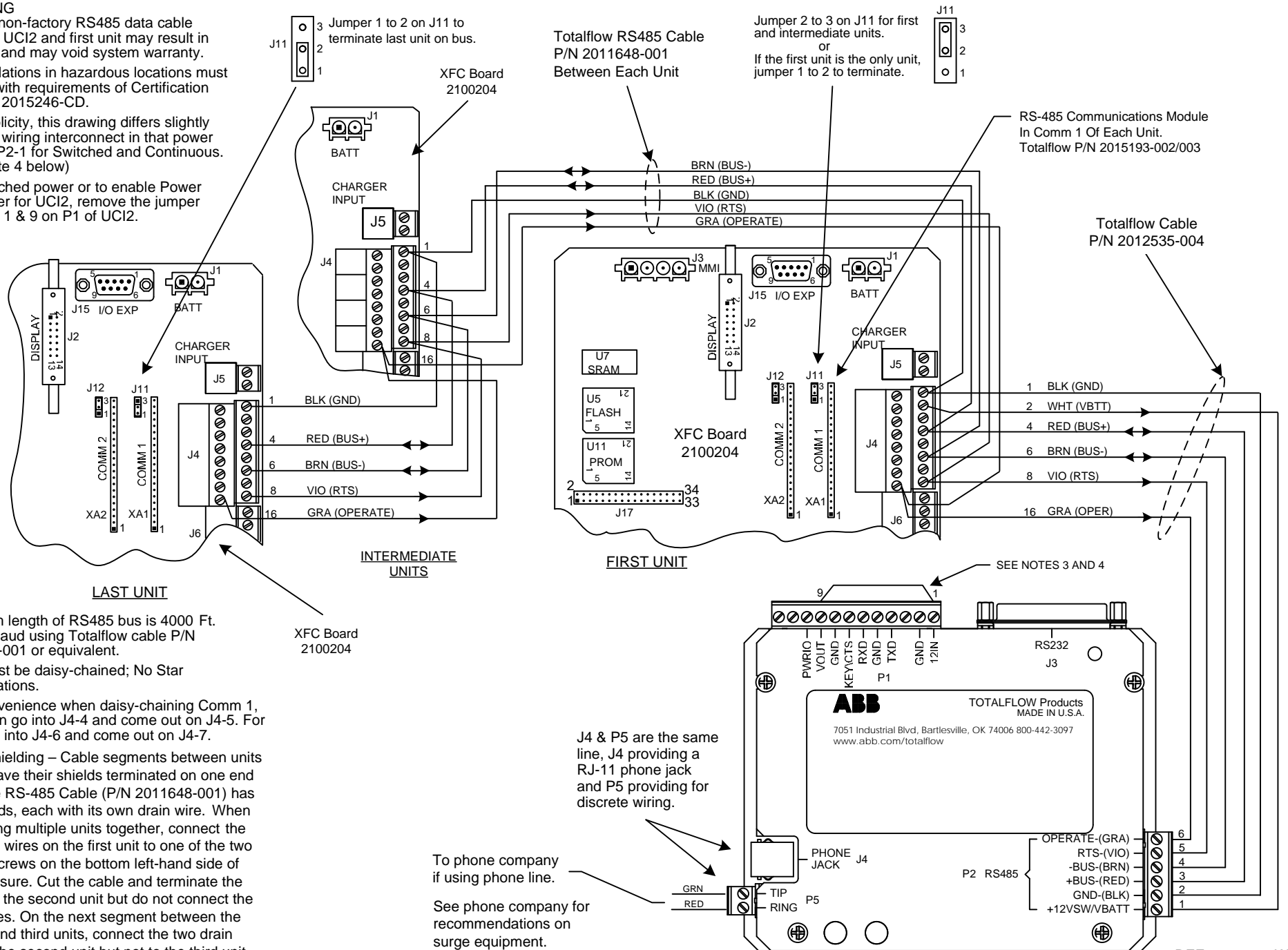


NOTES:

- WARNING**
Using a non-factory RS485 data cable between UCI2 and first unit may result in damage and may void system warranty.
- All installations in hazardous locations must comply with requirements of Certification Drawing 2015246-CD.
- For simplicity, this drawing differs slightly from the wiring interconnect in that power goes to P2-1 for Switched and Continuous. (See Note 4 below)
- For Switched power or to enable Power Scheduler for UCI2, remove the jumper between 1 & 9 on P1 of UCI2.

- Maximum length of RS485 bus is 4000 Ft. @9600 baud using Totalflow cable P/N 2011648-001 or equivalent.
- Units must be daisy-chained; No Star Configurations.
- As a convenience when daisy-chaining Comm 1, BUS+ can go into J4-4 and come out on J4-5. For BUS-, go into J4-6 and come out on J4-7.
- Cable Shielding – Cable segments between units should have their shields terminated on one end only. The RS-485 Cable (P/N 2011648-001) has two shields, each with its own drain wire. When connecting multiple units together, connect the two drain wires on the first unit to one of the two ground screws on the bottom left-hand side of the enclosure. Cut the cable and terminate the wiring on the second unit but do not connect the drain wires. On the next segment between the second and third units, connect the two drain wires to the second unit but not to the third unit. Repeat this process until all units are wired.



REF: 2017398-WI

	TOTALFLOW Products	ACTION	DOC TYPE	TITLE	DWG NO.	REV	SHEET
		L16904	UD	XFC COMM 1 (2100204 BD) TO UCI2 POWERED BY FCU PWR (RS-485)	2101949	AA	1 OF 1