

Type SCADA-CEH

Indoor/outdoor current transformer

Product features

- 600 volt, 10 kV BIL, 60 Hz
- Single, dual, and multi ratios
- For mounting over bushings of reclosers, circuit breakers, or cable terminations

Application

The SCADA-CEH indoor/outdoor, window-type current transformer is a 600 volt, 10 kV BIL rated unit. Primary current ratios are available from 100:5 through 6000:5 at 60 Hertz (Hz), with a rating factor up to 2.0. This dry-type, solid-cast current transformer will operate for supervisory control and data acquisition (SCADA) and with high accuracy for measurement or relay applications.

Mechanical description

The core and coil assembly is wound and encapsulated in a molded cast resin with a window size of 8.125". The clamp-type post secondary terminals are 1/4"-20 slotted screws with associated hardware located inside a weather-tight aluminum conduit box with two (2) 1" NPT conduit hubs.

Accuracy performance

The SCADA-CEH can provide reasonable accuracy for measurement or relay applications (see ratings specific to each ratio). The transformer is accurate through its rating factor, and can be used continuously to this level.

Mounting

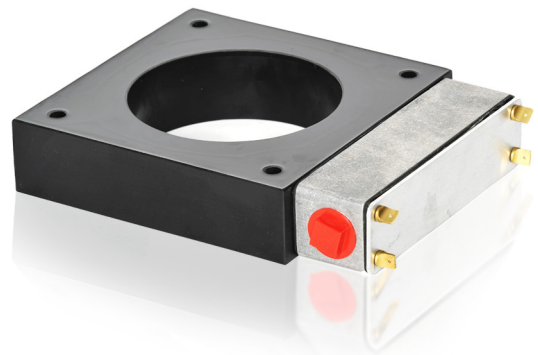
The SCADA-CEH is designed for mounting over the bushings of a distribution class recloser, circuit breaker, or cable termination. Mounting brackets can be provided to attach to bushing flange bolts. Contact factory for options.

Testing

The unit is individually tested per the IEEE C57.13 standard, including applied and induced voltage, accuracy, and polarity.

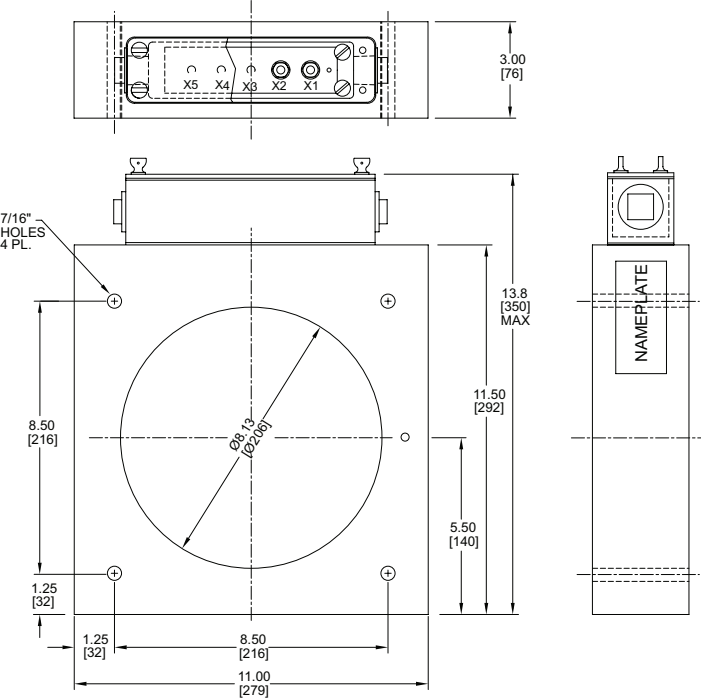
Options

The SCADA-CEH is available with a ground shield. The unit can be certified for revenue metering at certain ratio and burden levels if available and so requested. Contact factory for other needs.

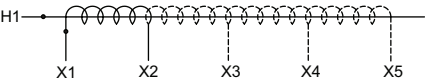


Unit dimensions

Note: Metric dimensions are displayed in [mm].



Type SCADA-CEH



Wiring diagram

Selection guide

Ratio	Metering accuracy	Relay accuracy	Rating factor	Style number
100:5	±10% - 1 VA	-	2.0	A0101S01-570
200:5	1.2B-0.1	-	2.0	A0102S01-570
300:5	0.6B-0.1	C5	2.0	A0103S01-570
400:5	0.3B-0.1	C10	2.0	A0104S01-570
500:5	0.3B-0.2	C15	2.0	A0105S01-570
600:5	±3% - 5 VA	C15	2.0	A0106S01-570
800:5	0.3B-0.5	C20	2.0	A0108S01-570
1000:5	0.3B-0.5	C30	2.0	A0110S01-570
1200:5	0.3B-0.9	C40	2.0	A0112S01-570
1500:5	0.3B-0.9	C50	2.0	A0115S01-570
1600:5	0.3B-0.9	C50	2.0	A0116S01-570
2000:5	0.3B-1.8	C35	2.0	A0120S01-570
2500:5	0.3B-1.8	C40	1.5	A0125S01-570
3000:5	0.3B-1.8	C50	1.33	A0130S01-570
4000:5	0.3B-1.8	C50	1.0	A0140S01-570
5000:5	0.3B-1.8	-	1.0	A0150S01-570
6000:5	0.3B-1.8	-	1.0	A0160S01-570

One second thermal/mechanical ratings: 60 x full winding I_{nom} / unlimited mechanical

Units can be certified for revenue metering. Change "570" of style number to "590".

Additional styles available upon request. Contact your ABB sales representative or call +1-252-827-3212 for more information.

For more information please contact:

ABB Inc.
Medium Voltage Distribution Components
3022 NC 43 North
Pinetops, NC 27864
USA
Phone: +1 252 827 3212
Fax: +1 252 827 4286

www.abb.com/mediumvoltage

Note:

We reserve the right to make technical changes or modify the contents of this document without prior notice. With regard to purchase orders, the agreed particulars shall prevail. ABB does not accept any responsibility whatsoever for potential errors or possible lack of information in this document. We reserve all rights in this document and in the subject matter and illustrations contained therein. Any reproduction—in whole or in parts—is forbidden without ABB's prior written consent.

Copyright 2012 ABB.
All rights reserved.