

CATALOG

# **Red Dot®** Commercial rigid fittings

**red dot.**



---

**Red Dot® conduit bodies offer a wide selection of junctions for rigid conduit, intermediate metallic conduit (IMC) and electrical metallic tubing (EMT). Providing the corrosion resistance of aluminum, they also feature precision-cast, machined surfaces with clean cover edges for safer wire pulling and proper gasket sealing. Clear UL, CSA, cULus and volumetric-capacity markings help facilitate approval by inspectors.**

---

# Table of contents

<b>004–011</b>	<b>Conduit bodies</b>
<b>012–013</b>	<b>Fittings and accessories</b>

# Conduit bodies, covers and gaskets

**Application:**

- Junction for branch conduits —“A” series bodies for rigid conduit and IMC maintain a weather-resistant conduit system when used with covers and gaskets
- “B” series bodies for thin wall conduit (EMT) save on the cost of connectors and labor in indoor applications
- Spacious, accessible wiring chamber provides a convenient location to pull conductors and make splices
- Aluminum conduit bodies can be used with rigid metal conduit — NEC 342 and 344, and steel EMT, NEC 358

**Features/benefits**

- Aluminum construction offers enhanced corrosion resistance
- Precision-cast and machined surfaces permit safer wire pulling
- Clean cover edges provide good gasket sealing
- Precision NPT threaded and set screw hubs enable trouble-free field installation for rigid, IMC or EMT conduit
- Retained deep-slotted steel cover screws for faster installation
- UL, CSA, cULus and volumetric-capacity markings facilitate approval by inspectors

**Standard materials:**

- Conduit bodies: Die-cast aluminum alloy (sand-cast where marked)
- CV series covers: Die-cast aluminum alloy with zinc-plated steel screws
- SCV series covers: Stamped aluminum alloy with low-carbon steel screws
- Gaskets (GKN series): Neoprene

**Standard finish:**

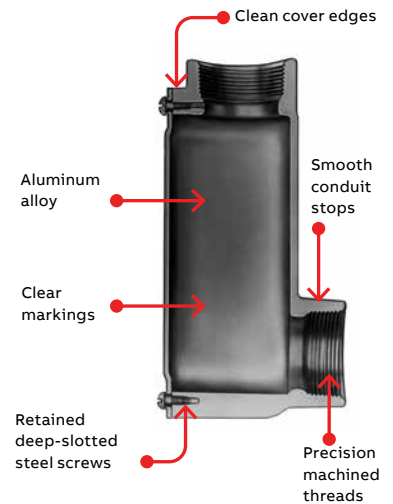
- Conduit bodies and die-cast covers: Powder coated
- Stamped covers: Natural

**Compliances:**

- cULus® listed († indicates UL listed, CSA certified only)

**Sample specifications:**

- Conduit bodies shall be die-cast or sand-cast aluminum alloy. All conduit stops shall be free of rough edges. Conduit bodies shall be finished with powder-coated paint. Conduit bodies shall be Red Dot catalog no. \_\_\_\_\_



## A series for rigid conduit and IMC

**C style**

- Sizes 3½–4" are sand-cast aluminum alloy (all others are die-cast aluminum alloy)
- Finish for AC-7, AC-8 and DAC-7-CG–DAC-10-CG: Polyester powder base, metallic glaucous gray
- Finish for all others: Powder-coated silver gray



DAC-1-CG



AC-1-RD

**C style**

Cat. no.	Trade size (in.)	A (in.)	B (in.)	Std. ctn.
AC-1-RD	½	4.82	1.31	50
AC-2-RD	¾	5.67	1.56	50
AC-3	1	6.38	1.75	25
AC-4-RD	1¼	8.27	2.49	10
AC-5	1½	8.27	2.49	10
AC-6-RD	2	10.25	3.14	5
AC-7*†	2½	13.46	4.44	1
AC-8*†	3	13.46	4.44	1
AC-9*	3½	15.94	5.42	1
AC-10-RD*	4	16.08	5.42	1

\* Shipped with cover and gasket.

† UL listed, CSA certified only

**C style — D-PAK™**

Cat. no.	Trade size (in.)	A (in.)	B (in.)	Std. ctn.
DAC-1-CG	½	4.82	1.31	12
DAC-2-CG	¾	5.67	1.56	15
DAC-3-CG	1	6.38	1.75	8
DAC-4-CG	1¼	8.27	2.49	6
DAC-5-CG	1½	8.27	2.49	5
DAC-6-CG	2	10.25	3.14	2
DAC-7-CG†	2½	13.46	4.44	2
DAC-8-CG†	3	13.46	4.44	2
DAC-9-CG†	3½	15.83	5.43	2
DAC-10-CG	4	15.83	5.43	2

## Conduit bodies, covers and gaskets

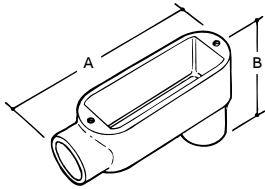
A series for rigid conduit and IMC

### LB style



DALB-1-CG

ALB-1



Type ALB

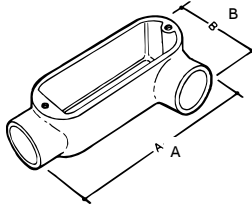
### LL style

- Die-cast aluminum alloy ½–2"
- Sand-cast aluminum alloy 2½"–4"
- Provide access for pulling, splicing and maintenance
- For rigid conduit and IMC applications
- cULus listed



DALL-1-CG

ALL-1



Type ALL

### LB style



Cat. no.	D-PAK™** cat. no.	Trade size (in.)	A (in.)	B (in.)	Std. ctn.	D-PAK™** std. ctn.
ALB-1	DALB-1-CG	½	4.39	2.01	50	25
ALB-2	DALB-2-CG	¾	5.18	2.21	50	16
ALB-3	DALB-3-CG	1	5.93	2.70	25	6
ALB-4	DALB-4-CG	1¼	7.76	3.46	10	5
ALB-5	DALB-5-CG	1½	7.76	3.66	10	5
ALB-6	DALB-6-CG	2	9.85	4.24	5	2
ALB-7*†	DALB-7-CG†	2½	12.83	5.13	1	2
ALB-8*†	DALB-8-CG†	3	12.83	5.73	1	2
ALB-9*†	DALB-9-CG†	3½	15.35	7.01	1	2
ALB-10*†	DALB-10-CG†	4	15.35	7.01	1	2

\* Shipped with cover and gasket.

† UL listed, CSA certified only

### LL style



Cat. no.	D-PAK™** cat. no.	Trade size (in.)	A (in.)	B (in.)	Std. ctn.	D-PAK™** std. ctn.
ALL-1	DALL-1-CG	½	4.39	1.90	50	12
ALL-2	DALL-2-CG	¾	5.17	2.22	50	15
ALL-3	DALL-3-CG	1	5.92	2.48	25	5
ALL-4	DALL-4-CG	1¼	7.76	3.41	10	4
ALL-5	DALL-5-CG	1½	7.76	3.41	10	5
ALL-6	DALL-6-CG	2	9.85	4.01	5	2
ALL-7*	DALL-7-CG	2½	13.08	6.00	1	2
ALL-8*	DALL-8-CG	3	13.12	5.96	1	2
ALL-9*	DALL-9-CG	3½	15.46	6.40	1	2
ALL-10*	DALL-10-CG	4	15.46	6.40	1	2

\* Shipped with cover and gasket.

† UL listed, CSA certified only

## Conduit bodies, covers and gaskets

A series for rigid conduit and IMC

### LR style

- Die-cast aluminum alloy ½"-2"
- Sand-cast aluminum alloy 2½"-4"
- Powder-coated silver gray finish



Cat. no.	D-PAK™* cat. no.	Trade size (in.)	A (in.)	B (in.)	Std. ctn.	D-PAK™* std. ctn.
ALR-1	DALR-1-CG	½	4.39	1.90	50	12
ALR-2	DALR-2-CG	¾	5.17	2.22	50	15
ALR-3	DALR-3-CG	1	5.92	2.48	25	5
ALR-4	DALR-4-CG	1¼	7.76	3.41	10	4
ALR-5	DALR-5-CG	1½	7.76	3.41	10	4
ALR-6	DALR-6-CG	2	9.85	4.05	5	2
ALR-7*	DALR-7-CG	2½	13.08	6.00	1	2
ALR-8*	DALR-8-CG	3	13.12	5.96	1	2
ALR-9*	DALR-9-CG	3½	15.46	6.40	1	2
ALR-10*	DALR-10-CG	4	15.46	6.40	1	2

\* Threaded and shipped with cover and gasket.

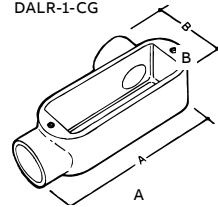
- Provide access for pulling, splicing and maintenance
- For rigid conduit/IMC applications



DALR-1-CG



ALR-1



Type ALR

### LT style

- Die-cast aluminum alloy ½"-2"
- Sand-cast aluminum alloy 2½"-4"



Cat. no.	D-PAK™* cat. no.	Trade size (in.)	A (in.)	B (in.)	Std. ctn.	D-PAK™* std. ctn.
AT-1	DAT-1-CG	½	4.83	1.31	50	12
AT-2	DAT-2-CG	¾	5.75	1.52	50	14
AT-3	DAT-3-CG	1	6.33	1.75	25	5
AT-4	DAT-4-CG	1¼	8.27	2.49	10	5
AT-5	DAT-5-CG	1½	8.27	2.50	10	5
AT-6	DAT-6-CG	2	10.25	3.14	5	2
AT-7*	DAT-7-CG	2½	6.13	4.44	1	2
AT-8*	DAT-8-CG	3	14.00	4.45	1	2
AT-9*	DAT-9-CG	3½	15.94	5.43	1	2
AT-10*	DAT-10-CG	4	16.08	5.42	1	2

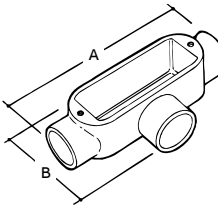
\* Threaded and shipped with cover, gasket and body.



DAT-1-CG



AT-1



Type AT

### LRL style



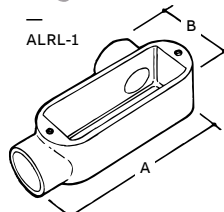
Cat. no.	Trade size (in.)	A (in.)	B (in.)	Std. ctn.
ALRL-1†	½	4.40	2.06	50
ALRL-2†	¾	5.08	2.28	50
ALRL-3†	1	5.80	2.47	25

\* Threaded and shipped with cover, gasket and body.

†UL listed, CSA certified only



ALRL-1



Type ALRL

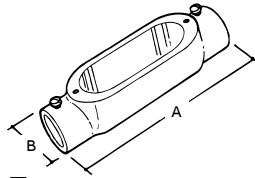
# Conduit bodies, covers and gaskets

## B series for EMT

### C style



BC-1-RD



Type BC

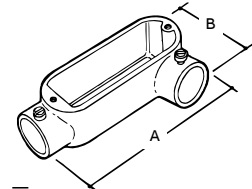


Cat. no.	Trade size (in.)	A (in.)	B (in.)	Std. ctn.
BC-2-RD	3/4	5.67	1.56	50
BC-3	1	6.38	1.75	25
BC-4	1 1/4	8.27	2.49	10
BC-5	1 1/2	8.27	2.49	10
BC-6	2	10.25	3.14	5

### LL style



BLL-1



Type BLL

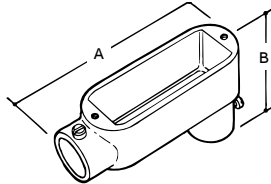


Cat. no.	Trade size (in.)	A (in.)	B (in.)	Std. ctn.
BLL-1	1/2	4.39	1.90	50
BLL-2	3/4	5.17	2.22	50
BLL-3	1	5.92	2.48	25

### LB style



BLB-1



Type BLB



Cat. no.	D-PAK™ cat. no.	Trade size (in.)	A (in.)	B (in.)	Std. ctn.	D-PAK™ std. ctn.
BLB-1	DBLB-1-C*	1/2	4.39	2.01	50	25
BLB-2	DBLB-2-C*	3/4	5.18	2.21	50	16
BLB-3	DBLB-3-C*	1	5.93	2.70	25	6
BLB-4	—	1 1/4	7.76	3.46	10	—
BLB-5	—	1 1/2	7.76	3.66	10	—
BLB-6	—	2	9.85	4.24	5	—
BLB-7*	—	2 1/2	12.83	5.14	1	—
BLB-8*	—	3	12.83	5.73	1	—
BLB-9*	—	3 1/2	15.35	7.01	1	—
BLB-10*	—	4	15.35	7.03	1	—

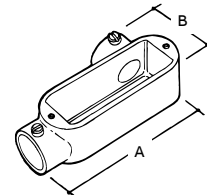
\*Threaded hubs, shipped with cover and gasket.

\*UL listed, CSA certified only

### LR style



BLR-1

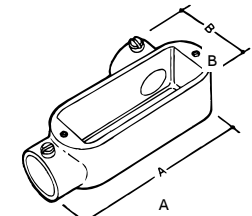


Type BLR



Cat. no.	Trade size (in.)	A (in.)	B (in.)	Std. ctn.
BLR-1	1/2	4.39	2.01	50
BLR-2	3/4	5.17	2.22	50
BLR-3	1	5.92	2.49	25

### LRL style



Type BLRL



Cat. no.	Trade size (in.)	A (in.)	B (in.)	Std. ctn.
BLRL-1*	1/2	4.40	2.06	50
BLRL-2*	3/4	5.08	2.31	50
BLRL-3*	1	5.80	2.63	25

Shipped with cover and gasket.

\*UL listed, CSA certified only

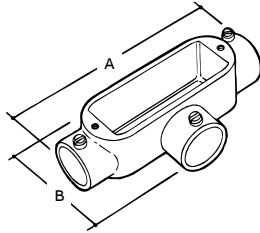
## Conduit bodies, covers and gaskets

B series for EMT, covers and gaskets

### T style



BT-1



Type BT

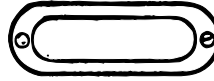


Cat. no.	Trade size (in.)	A (in.)	B (in.)	Std. ctn.
BT-1	½	4.83	2.06	50
BT-2	¾	5.75	2.31	50
BT-3	1	6.33	2.63	25
BT-4	1¼	8.27	3.37	10
BT-5	1½	8.27	3.37	10
BT-6	2	10.25	4.05	5

\* Threaded bubs shipped with cover and gasket.

### Aluminum covers

- CV = Die-cast aluminum with zinc-plated steel screws
- SCV = Stamped aluminum with low-carbon steel screws



Cat. no.	Conduit size (in.)	Std. ctn.
CV-1	½	250
CV-2	¾	250
CV-3	1	250
CV-4	1¼-1½	50
CV-5	2	25
SCV-1	½	250
SCV-2	¾	250
SCV-3	1	250
SCV-4	1¼-1½	250
SCV-5	2	100
SCV-6	2½-3	5
SCV-7	3½-4	5

### Gaskets

- Neoprene material



Neoprene gasket

Cat. no.	Conduit size (in.)	Std. ctn.
GKN-1	½	100
GKN-2	¾	50
GKN-3	1	25
GKN-4	1¼-1½	25
GKN-5	2	25
GKN-6	2½-3	5
GKN-7	3½-4	5



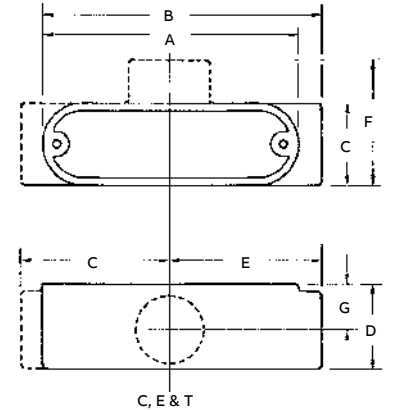
# Conduit bodies, covers and gaskets

## Dimensions

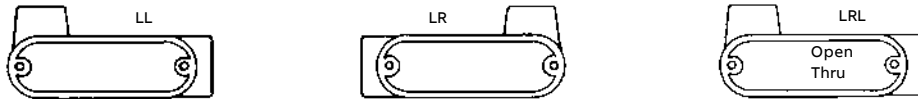
### C and T style dimensions



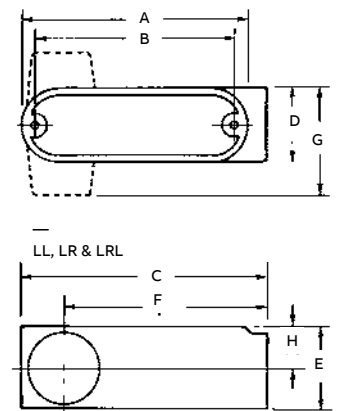
Trade size	Dimensions (in.)							CI	CI
	A	B	C	D	E	F	G	C style	T style
½"	3.86	4.34	1.06	1.34	2.41	2.06	0.78	4.3	4.3
¾"	4.67	5.21	1.25	1.54	2.87	2.21	0.86	7.3	7.3
1"	5.38	5.84	1.55	1.91	3.16	2.63	1.06	12.3	12.3
1¼"	7.25	7.76	1.97	2.48	4.13	3.37	1.44	32.3	32.3
1½"	7.25	7.76	2.13	2.68	4.13	3.37	1.44	33.8	33.8
2"	9.46	9.85	2.92	3.26	5.13	4.05	1.77	69.5	69.5
2½"	12.22	13.11	3.39	4.02	7.00	5.92	2.20	159.0	159.0
3"	12.21	13.10	4.13	4.66	7.00	5.93	2.52	188.0	188.0
3½"	14.85	15.40	5.20	5.44	7.97	7.20	2.80	304.8	304.8
4"	14.83	15.46	5.16	5.51	8.04	6.45	2.87	309.0	309.0



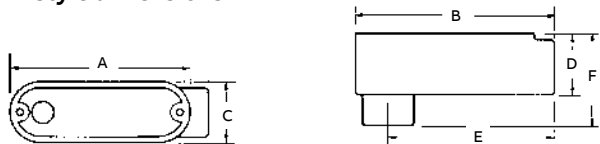
### LL, LR and LRL style dimensions



Trade size	Dimensions (in.)								CI	CI	CI
	A	B	C	D	E	F	G	H	LL style	LR style	LRL style
½"	3.85	3.50	4.39	1.06	1.35	3.54	1.90	0.78	4.3	4.3	4.3
¾"	4.67	4.13	5.17	1.24	1.54	4.15	2.22	0.87	7.3	7.3	7.3
1"	5.37	4.83	5.92	1.56	1.91	4.72	2.48	1.06	12.3	12.3	12.2
1¼"	7.25	6.50	7.76	1.85	2.48	5.98	3.41	1.44	35.8	35.8	-
1½"	7.25	6.50	7.76	2.13	2.68	5.91	3.41	1.44	35.8	35.8	-
2"	12.18	9.45	9.85	2.91	3.27	7.48	4.05	1.77	69.5	69.8	-
2½"	12.22	11.26	13.08	3.39	4.02	10.31	6.00	2.20	153.0	153.0	-
3"	12.22	11.27	13.12	4.04	4.66	10.35	5.96	2.40	182.5	182.5	-
3½"	14.83	13.81	15.46	4.65	5.43	11.98	6.40	2.99	304.8	304.8	-
4"	14.83	13.81	15.46	5.16	5.51	11.78	6.40	2.87	308.0	308.0	-



### LB style dimensions



Trade size	Dimensions (in.)						CI
	A	B	C	D	E	F	CI
½"	3.85	4.39	1.31	1.34	3.61	2.01	4.3
¾"	4.68	5.18	1.53	1.54	4.13	2.21	7.3
1"	5.39	5.91	1.75	1.91	4.73	2.70	12.3
1¼"	7.25	7.76	2.49	2.48	6.10	3.46	32.3
1½"	7.25	7.76	2.49	2.68	6.10	3.66	33.8
2"	9.46	9.85	3.14	3.27	7.80	4.24	71.3
2½"	12.24	12.83	4.47	3.94	10.03	5.13	153.0
3"	12.20	12.83	4.44	4.53	10.03	5.72	183.5
3½"	14.88	15.35	5.43	5.51	12.20	7.01	304.9
4"	14.88	15.35	5.43	5.51	12.20	7.01	308.0

### Conduit body wiring table\* — Style of fitting

Trade size	LB	C	T	LL, LR, LRL
¾"	#6 AWG	#6 AWG	#6 AWG	#6 AWG
1"	#4 AWG	#4 AWG	#4 AWG	#4 AWG
1¼"	#2 AWG	#2 AWG	#2 AWG	#2 AWG
1½"	#2 AWG	#1/0 AWG	#2 AWG	#1/0 AWG
2"	#1 AWG	#2/0 AWG	#1 AWG	#4/0 AWG
2½"	300 kcmil	250 kcmil	#4/0 AWG	300 kcmil
3"	300 kcmil	250 kcmil	#4/0 AWG	300 kcmil
3½"	400 kcmil	300 kcmil	250 kcmil	350 kcmil
4"	400 kcmil	300 kcmil	250 kcmil	350 kcmil

\* The maximum number and size of wire that can be safely pulled is based on three type XHHW wires or equal.

# Mogul pulling elbows/service entrance bodies

**Application:**

- Raintight junction for bringing electrical service into a location
- Accessible wiring chamber provides a convenient location to pull conductors and make splices

**Features/benefits**

- Aluminum alloy construction for corrosion resistance
- Precision cast and machined surfaces permit safer wire pulling
- Clean cover edges provide good gasket sealing
- Precision NPT threaded hubs enable trouble-free field installation for rigid and IMC conduit
- Retained, deep-slotted, zinc-plated steel cover screws for faster installation
- Clear UL, CSA and volumetric-capacity markings speed approval by inspectors

**Standard materials:**

- Service entrance bodies: Die-cast aluminum alloy
- Covers ½" to 4": Die-cast aluminum alloy with zinc-plated steel screws
- Gaskets: ASLB series and MALB-4 to MALB-6 – fiber MALB-8 to MALB-10 – composition SALB series –neoprene

**Standard finish:**

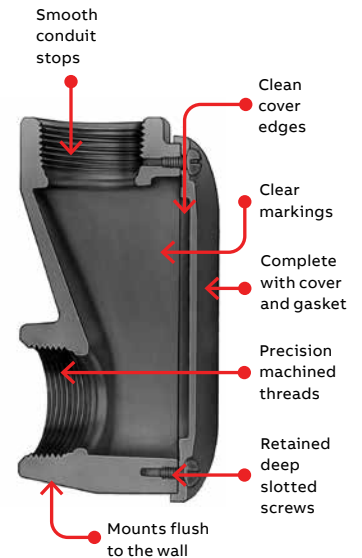
- Polyester powder base, metallic glaucous gray

**Compliances:**

- UL listed
- CSA certified

**Specifications:**

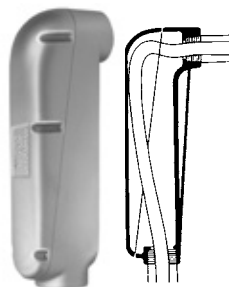
Service entrance fittings shall be die-cast aluminum alloy. All conduit stops shall be free of rough edges. Service entrance fittings shall be finished with polyester powder base, metallic glaucous gray. Service entrance fittings shall be Red Dot catalog no. \_\_\_\_\_



## Aluminum mogul pulling elbows

Spacious, accessible wiring chamber for pulling conductors, making splices and bringing electrical service into a location.

- Dome cover — extra bending room
- Deep-slotted zinc-plated steel cover screws
- I-beam construction adds strength
- Smooth throats for easy wire pulling
- Extra wiring room
- Ultra-high pressure die-cast aluminum alloy
- UL listed, CSA certified



Cat. no.	Hub size	Unit qty.	Std. pkg.	Wt. lbs. per 100
MALB-4	1¼"	2	10	160
MALB-5	1½"	1	1	400
MALB-6	2"	1	1	375
MALB-8	3"	1	1	1060
MALB-10	4"	1	1	1800

Gasket cat. no.	Hub Size	Unit qty.	Std. pkg.	Wt. lbs. per 100
MGKV-5	1¼" to 2"	1	5	4
MGKV-6	2½" to 3"	1	5	5
MGKV-7	3½" to 4"	1	5	5

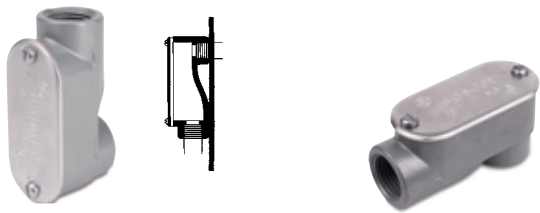


## Mogul pulling elbows/service entrance bodies

### Service entrance fittings

Accessible junctions for bringing electrical service into a location.

- Mounts flush to wall
- Standard and extra-long configurations
- Retained, deep-slotted, zinc-plated steel cover screws
- Smooth throats for easy wire pulling
- Ultra-high pressure die-cast aluminum
- UL listed, CSA certified



ASLB-1

DASLB-1

#### ½"-2" bodies with covers and gaskets

Cat. no.	Hub size (in.)	Cover only
ASLB-1	½"	ASLB1CV
ASLB-2	¾"	ASLB2CV
ASLB-3	1"	ASLB3CV
ASLB-4	1¼"	ASLB4CV
ASLB-5	1½"	ASLB5CV
ASLB-6	2"	ASLB6CV

#### D-PAK® \*

Cat. no.	Hub size (in.)
DASLB-1	½"
DASLB-2	¾"
DASLB-3	1"



ASLB



SALB

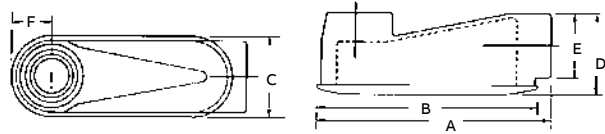
#### 2½"-4" bodies with stamped covers and gaskets

Cat. no.	Hub size (in.)
SALB-7	2½"
SALB-8	3"
SALB-9	3½"
SALB-10	4"

#### Extra-long bodies with covers and gaskets

Cat. no.	Hub size (in.)
ASLB-XL4	1¼"
ASLB-XL6	2"

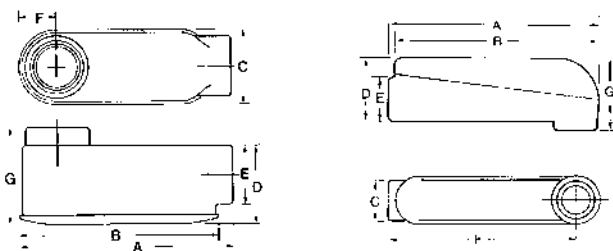
#### ASLB and ASLB-XL dimensions



ASLB & ASLB-XL

Trade size	Dimensions (in.)						
	A	B	C	D	E	F	CI
<b>ASLB</b>							
½"	3.15	2.71	1.20	1.45	1.06	0.75	1.8
¾"	3.57	3.26	1.52	1.75	1.24	1.01	3.8
1"	4.18	3.73	1.75	1.97	1.55	1.07	5.7
1¼"	5.39	5.00	2.18	2.44	1.96	1.33	13.5
1½"	6.10	5.74	2.36	2.44	2.20	1.53	17.0
2"	6.61	6.29	2.87	2.93	2.67	1.73	29.3
<b>ASLB-XL</b>							
1¼"	7.83	7.22	2.48	2.83	2.24	1.65	24.3
2"	9.92	9.44	2.95	3.58	2.67	1.89	63.0

#### SALB and MALB dimensions



SALB

MALB

Trade size	Dimensions (in.)							
	A	B	C	D	E	F	G	CI
<b>SALB</b>								
2½"	12.83	12.24	4.47	3.94	3.31	2.84	5.13	153.0
3"	12.83	12.20	4.44	4.53	4.00	2.83	5.72	183.5
3½"	15.35	14.88	5.43	5.51	4.51	3.17	7.01	304.9
4"	15.35	14.88	5.43	5.51	5.02	3.17	7.01	308.0
<b>MALB</b>								
1¼"	9.47	9.11	2.52	2.84	2.06	8.41	3.58	40.0
1½"	14.53	14.26	3.22	5.17	3.09	12.95	5.17	128.0
2"	14.53	14.26	3.22	5.17	3.09	12.69	5.17	128.0

# Zinc concrete slab inserts, elbows and plugs

## Application:

- Permits in-slab ceiling drops and floor mounts in poured concrete
- Provides flush threaded conduit hub for mounting, pulling and future access to conduit systems
- Design permits prefabrication of in-slab conduit system

## Features/benefits

- Flush design leaves no broken or bent stubs for easy removal of undamaged forms
- Flush design permits simplified in-slab work
- Flush design leaves a neat, uncluttered job
- Offered in straight ES configuration for straight-through conduit runs and mounting of floor boxes in slabs over 6" thick
- Offered in ESL configuration to eliminate bending of conduit in slabs over 4" thick
- Precision-cast and machined surfaces permit safer wire pulling



ESL

ES

## Standard materials:

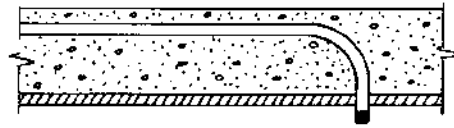
- Die-cast zinc alloy
- Stamped aluminum covers
- Zinc-plated cover screws
- Neoprene gaskets

## Standard finish:

- Natural

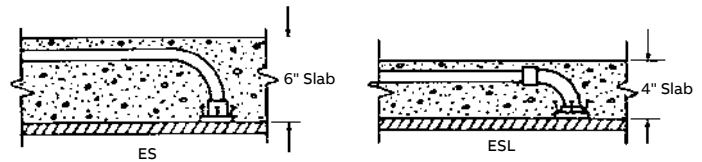
## Compliances:

- UL listed
- CSA certified



Old way

Conduit running in a cement slab is bent 90° to run through a hole drilled in the form. Drilling takes time and damages the form. Stripping form often damages conduit stubs. Varying length of stubs requires individual measuring and cutting of conduit drops.



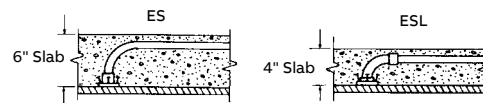
Red Dot way

Conduit running in a cement slab is attached to a 90° concrete slab insert or conduit is bent 90° and is threaded to a straight insert. Nail or screw fitting to wood or metal forms. After concrete is poured and forms stripped, conduit drops quickly into fittings from floor below. Drops are easily measured from ceiling line to switch or outlet height and cut in uniform lengths.

## Threaded rigid/IMC conduit inserts

Concrete slab inserts permit in-slab ceiling drops and floor mounts in poured concrete.

- For rigid and IMC
- Slab insert is nailed to form prior to pour
- Removable seal keeps threads cement-free
- ESL eliminates:
  - Bends in 4" concrete slabs
  - Damage to form
  - Cutting off conduit stubs
- ES slab inserts are UL listed, CSA certified
- ESL slab inserts are cULus listed



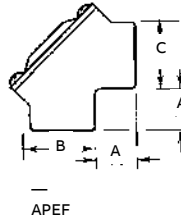
Cat. no.	Hub size (in.)
<b>Straight</b>	
ES-2	¾
ES-3	1
<b>90°</b>	
ESL-1	½
ESL-2	¾
ESL-3	1

## Zinc concrete slab inserts, elbows and plugs

### Female-to-female aluminum elbows



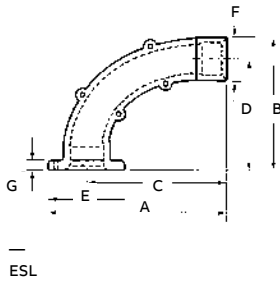
#### APEF dimensions



Cat. no.	Hub size (in.)
<b>Pulling rigid IMC</b>	
APEF-1	1/2
APEF-2	3/4

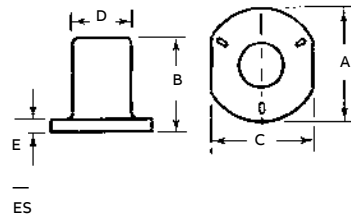
Trade size	Dimensions (in.)		
	A	B	C
1/2"	0.85	0.92	0.92
3/4"	0.79	1.17	1.17

#### ESL dimensions



Trade size	Dimensions (in.)						
	A	B	C	D	E	F	G
1/2"	4.41	3.66	3.46	3.14	1.89	1.02	0.18
3/4"	4.53	3.71	3.46	3.14	2.12	1.14	0.20
1"	4.68	3.84	3.46	3.10	2.44	1.46	0.19

#### ES dimensions



Trade size	Dimensions (in.)				
	A	B	C	D	E
3/4"	2 <sup>11</sup> / <sub>64</sub>	1 <sup>5</sup> / <sub>8</sub>	1 <sup>31</sup> / <sub>32</sub>	1 <sup>1</sup> / <sub>4</sub>	3/4
1"	2 <sup>9</sup> / <sub>16</sub>	2	2 <sup>5</sup> / <sub>16</sub>	1 <sup>17</sup> / <sub>32</sub>	3/4

**Additional information**

ABB has made every attempt to ensure the accuracy and reliability of the contents of this document. However, all content is provided for general informational purposes only, and ABB makes no guaranty or warranty, express or implied, as to the accuracy of any technical content, or that the information contained in this publication will be error free, and all such guarantees or warranties are expressly disclaimed.

ABB may change or modify the contents at any time, without prior notice. We reserve all rights in this document and in the subject matter and illustrations contained therein. Any reproduction or utilization of its contents – in whole or in parts – is forbidden without prior written consent of ABB.





—  
**US**

ABB Installation Products Inc.  
Electrification Business  
860 Ridge Lake Blvd.  
Memphis, TN 38120  
+1 901-252-5000

**[electrification.us.abb.com](http://electrification.us.abb.com)**