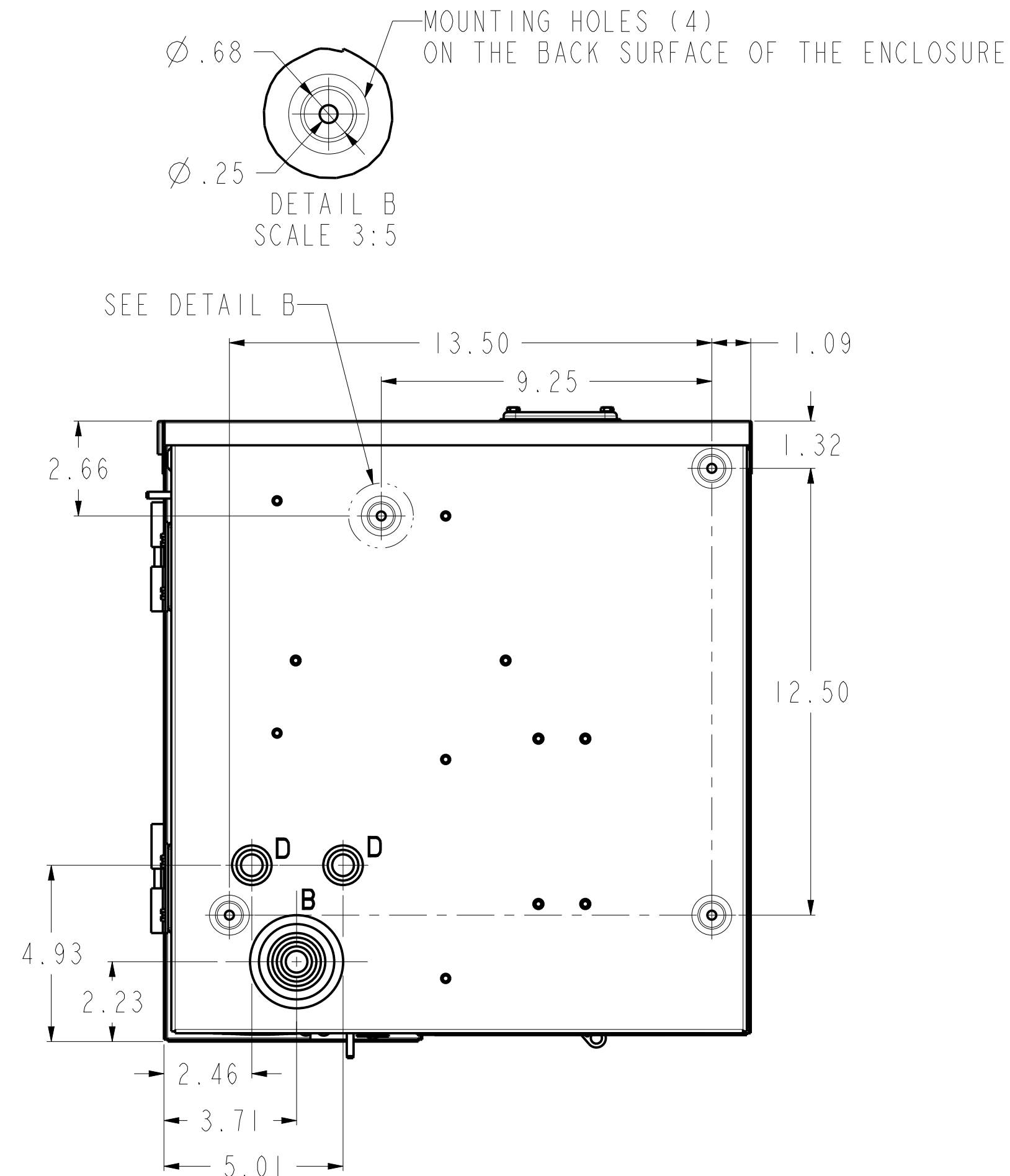
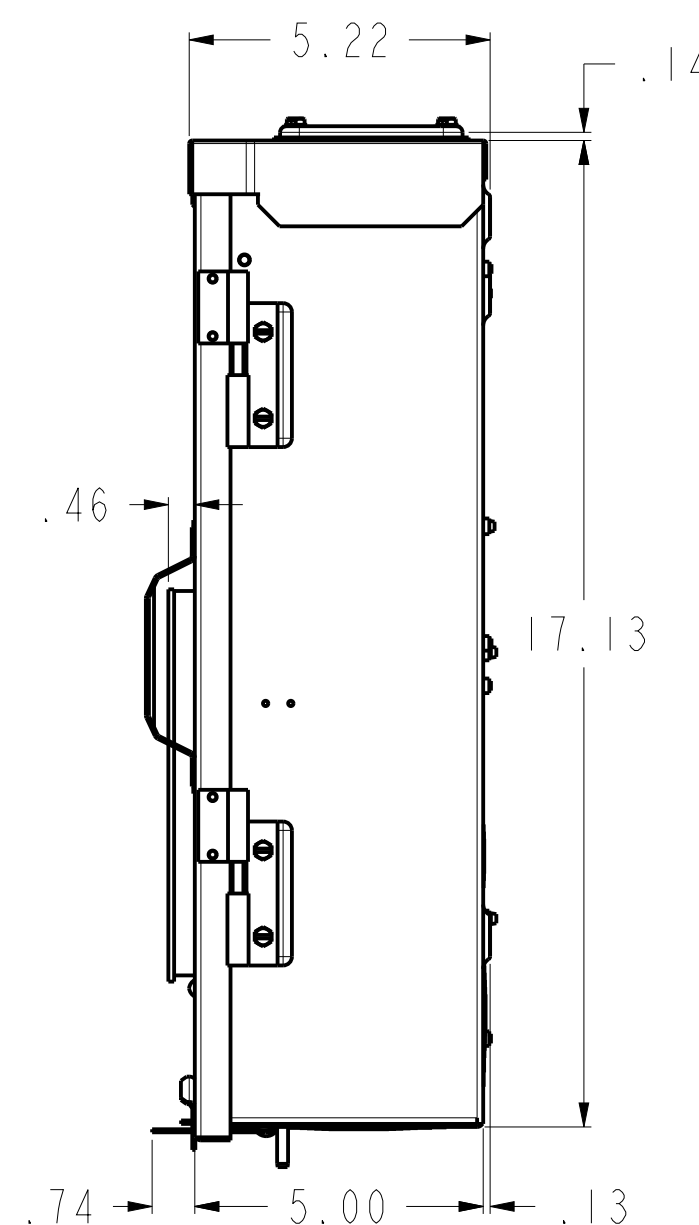
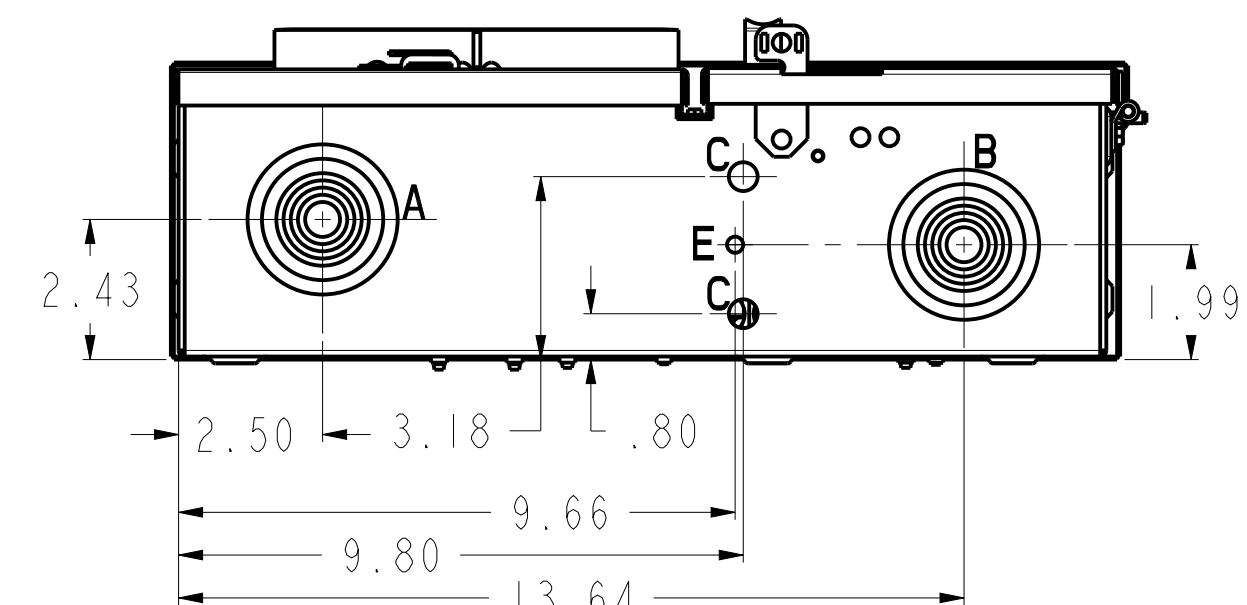
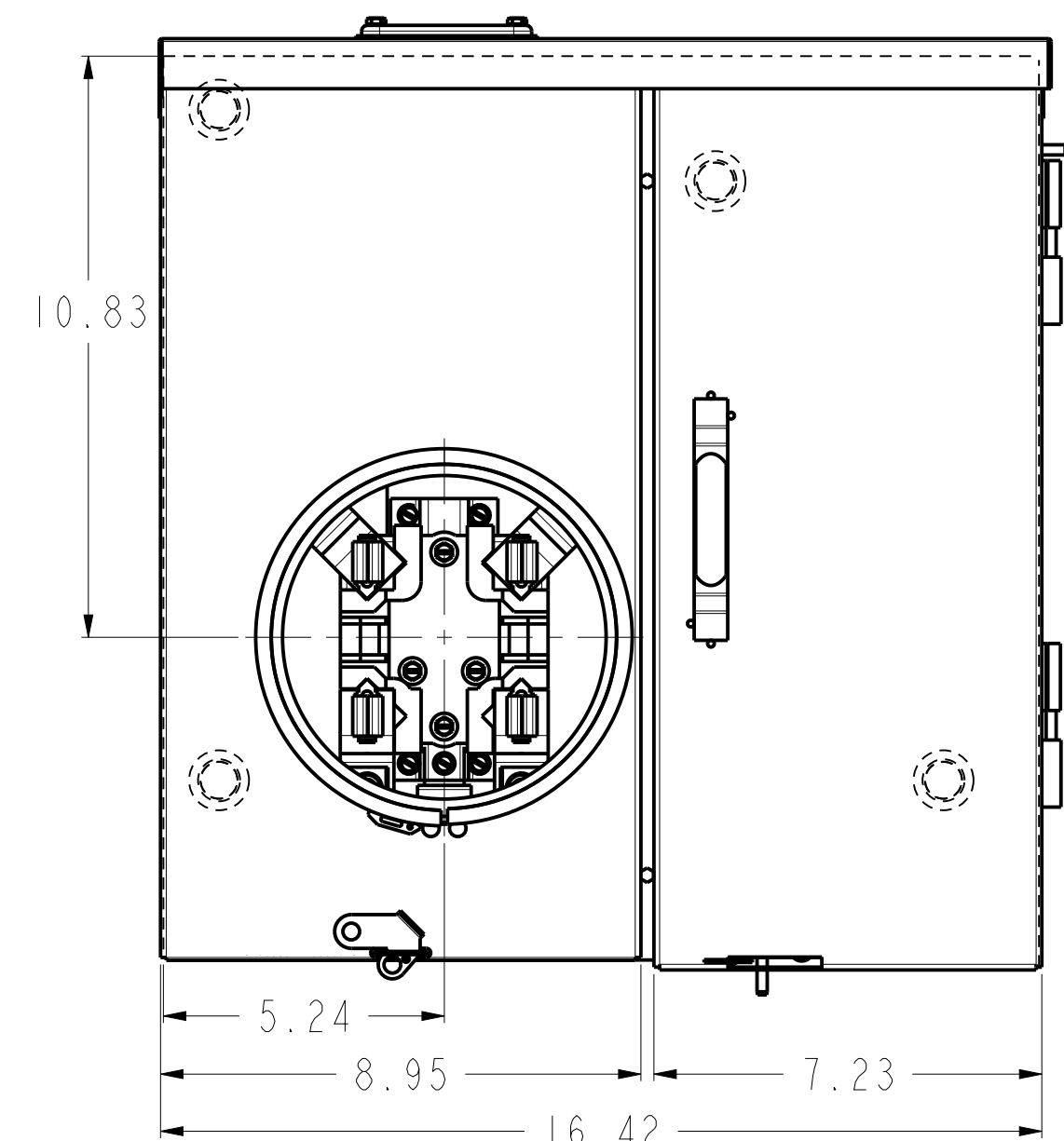
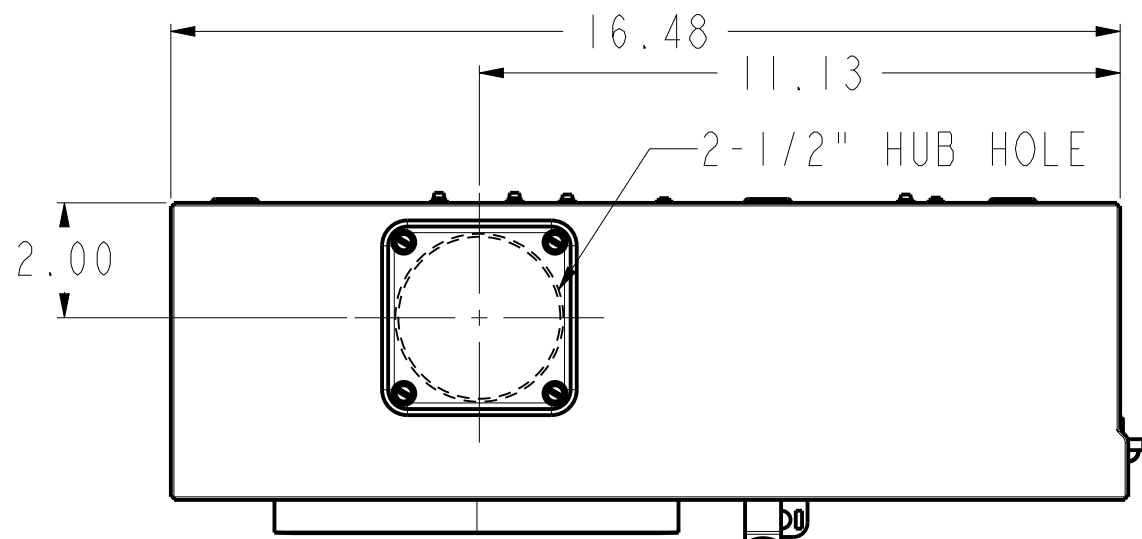


3D Model is the Master Document of Record
Article or Material Must Conform to REACH Procedure S1900000 Sec.14
Article or Material Must Conform to RoHS Procedure S1900000 Sec.13
Part Must Conform to S1900000 Sec.4 Toxicity Procedure
Geometric Dimensioning & Tolerancing as per ASME Y14.5-2009

ABB PROPRIETARY AND CONFIDENTIAL INFORMATION
The information contained in this document has to be kept strictly confidential.
Any unauthorized disclosure of this information is strictly forbidden.
ABB reserves all rights regarding intellectual Property Rights.
Copyright 2018 ABB. All rights reserved.



SH240

KNOCKOUT TABLE:

KO SYMBOL	KO SIZE	QTY
A	1 1/4 X 1 1/2 X 2 X 2 1/2 X 3 KO	1
B	1 1/4 X 1 1/2 X 2 X 2 1/2 KO	2
C	1/2 KO	2
D	1/2 X 3/4 X 1 KO	2
E	9/32 KO	1

CAT NO.	MODEL
TM15RMC	2
TM20RMC	2
TM12RMC	2
TM10RMC	2

	DRAWING FILE 10103091SH240	MODEL FILE 10103091SH240	ABB			
	DATE MODIFIED 09-Oct-20 11:47:29 AM	DESIGNED BY DHANUNJAY				
Calculated for: VOLUME 0.000 in^3	CN# C105102	APPROVED BY ANIL	TITLE OUTLINE DRAWING TM10/12/15/20RMC_A1/A2			
	Critical to Quality Characteristic					
MASS 0.000 lbm	MATERIAL SPECIFICATION ---	FINISH SPECIFICATION ---	UNITS in	LOCAL TITLE ---		
UNLESS OTHERWISE SPECIFIED TOLERANCE ON: 1 PL DECIMALS ± 0.1 2 PL DECIMALS ± 0.02 3 PL DECIMALS ± 0.005 ANGLES ± 1.0	MATERIAL DESCRIPTION ---		SIZE C	ROOT NUMBER 10103091	REV 1	RELEASE STATE Released
	FINISH DESCRIPTION ---		SCALE 3:10	PRODUCT LINE ---		SHEET 1 of 1

NOTE: ALL DIMENSIONS HAVE ± 1/8 TOLERANCE