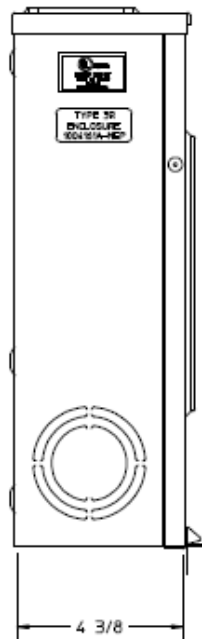
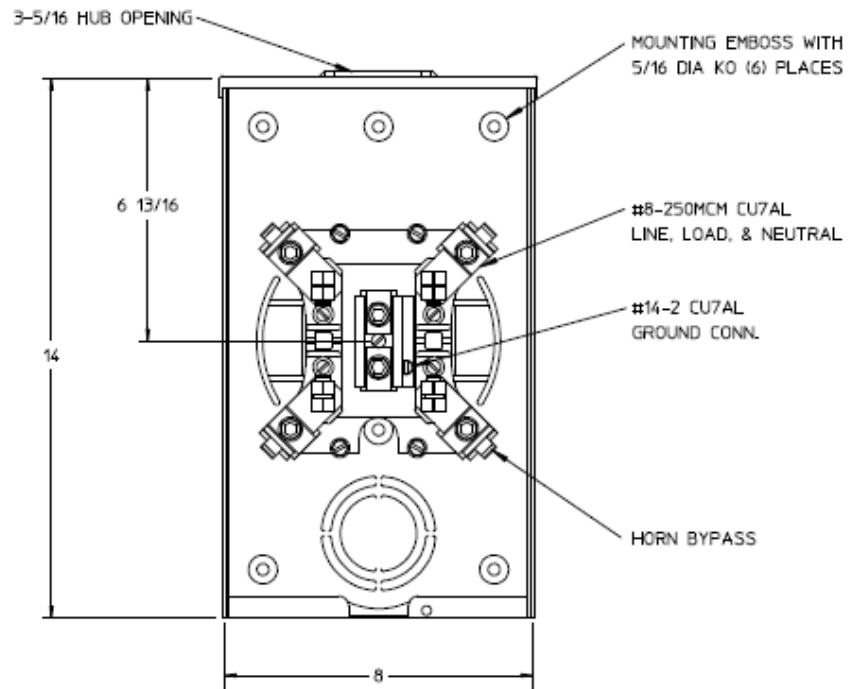


### Left Side View



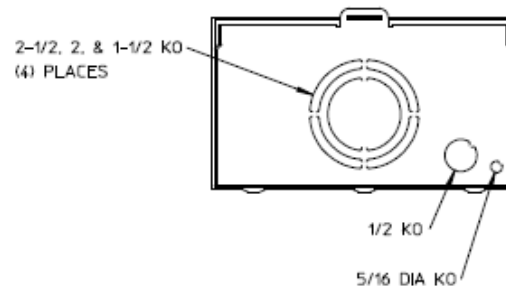
### Front View Interior



### Notes

- 1) FINISH: GRAY
- 2) CABINET: 16 GA GALV. STEEL
- 3) 200 AMP CONTINUOUS  
600 VAC, 1 PHASE, 3 WIRE
- 4) TEMPORARY CARDBOARD METER  
OPENING COVER PROVIDED.
- 5) MIDWEST LABEL ATTACHED TO THE END  
OF THE CARTON.
- 6) MIDWEST LOGO STAMPED ON THE LOWER  
LEFT HAND CORNER OF FRONT.

### Bottom View



METER SKT -(1) 200A 600V 1P3W 16GA STL N3R 4TRM  
SML HUB OPN TOP/BOT FEED HORN BYPASS

CAT NO	DWG DATE	REV #
1004161AMEP	06/07/2018	01