

SAFETY INSTRUCTIONS

CR-S024VDC1R, CR-P024DC2, CR-P024AC2G, CR-M024AC4L, CR-M024DC4LDG,
CR-U024DC3L

Pluggable interface relay

     		it	Attenzione: Tensione pericolosa! Fare riferimento alle istruzioni per l'uso. Prima di intervenire su questo dispositivo, scollegare e isolare tutte le fonti di alimentazione. Attenzione! L'installazione deve essere eseguita esclusivamente da un installatore qualificato.
ar	تحذير: جهد كهربائي خطير! راجع تعليمات التشغيل. افصل الكهرباء وقم بتأمينها قبل العمل في هذا الجهاز. تنبيه! يجب عدم التركيب إلا من خلال شخص على دراية بمجال التقنية الكهربائية.	lt	Įspėjimas: Pavojainga įtampa! Žr. naudojimo instrukcijas. Atjunkite ir laikinai užblokuokite maitinimą prieš dirbdami su šiuo įrenginiu. Dėmesio! Įrengti gali tik asmuo, turintis elektrotechnikos patirties.
bg	Предупреждение: Опасно напрежение! Вижте инструкциите за работа. Изключете и блокирайте захранването преди да работите с устройството. Внимание! Да се монтира само от експерт електротехник.	lv	Bīdīnājums: Bīstams spriegums! Skatiet darba norādījumus. Pirms sākat darbu ar šo ierīci, atvienojiet un bloķējiet strāvas padevi. Uzmanību! Uzstādīšanu drīkst veikt tikai persona ar zināšanām par elektrotehniku.
cs	Varování: Nebezpečné napětí! Viz návod k obsluze. Před zahájením prací na tomto zařízení odpojte a uzamkněte napájení. Pozor! Toto zařízení smí instalovat pouze osoba s elektrotechnickou odborností.	nl	Waarschuwing: Gevaarlijke spanning! Raadpleeg de installatie-instructies. Koppel dit apparaat los van de stroomvoorziening voordat u werkzaamheden uitvoert. Let op! Installatie mag alleen worden uitgevoerd door een monteur met elektrotechnische expertise.
da	Advarsel: Farlig elektrisk spænding! Se installationsinstruktioner. Frakobl enheden, og afbryd strømforsyningen, før du arbejder med denne enhed. Giv agt! Installation må kun foretages af personer med elektroteknisk ekspertise.	no	Advarsel: Farlig spenning! Se i bruksanvisningen. Koble fra og steng av strømmen før du arbeider på denne enheten. Forsiktig! Montering skal kun utføres av kvalifiserte personer med elektrokompetanse.
de	Warnung: Gefährliche Spannung! Siehe Installationsanleitung. Vor dem Arbeiten Gerät ausschalten und von der Spannungsversorgung trennen. Achtung! Installation nur durch elektrotechnische Fachkraft.	pl	Ostrzeżenie: Niebezpieczne napięcie! Patrz: instrukcja instalacji. Przed rozpoczęciem wykonywania pracy z tym urządzeniem odłącz i zablokuj zasilanie. Uwaga! Montaż może wykonywać wyłącznie osoba posiadająca doświadczenie elektrotechniczne.
el	Προειδοποίηση: Επικίνδυνη τάση! Ανατρέξτε στις οδηγίες λειτουργίας. Αποσυνδέστε και απομονώστε την παροχή ισχύος προτού ξεκινήσετε τις εργασίες σε αυτήν τη συσκευή. Προσοχή! Η εγκατάσταση πρέπει να γίνεται μόνο από αδειούχο ηλεκτρολόγο εγκαταστάτη.	pt	Aviso: Tensão perigosa! Consulte as instruções de instalação. Desconecte e desligue a energia elétrica antes de trabalhar nesse dispositivo. Atenção! A instalação deve ser feita apenas por uma pessoa com especialidade eletrotécnica.
en	Warning: Hazardous voltage! Refer to installation instructions. Disconnect and lock out power before working on this device. Attention! Installation by person with electrotechnical expertise only.	ro	Avertisment: Tensiune electrică periculoasă! Consultați instrucțiunile de utilizare. Deconectați și închideți sursa de energie înainte de a lucra cu acest dispozitiv. Atenție! Instalarea trebuie realizată doar de către o persoană cu expertiză electrotehnică.
es	Advertencia: ¡Tensión peligrosa! Consulte las instrucciones de instalación. Antes de trabajar con este dispositivo, desconecte y bloquee la corriente. ¡Atención! La instalación debe ser realizada únicamente por un técnico electricista.	ru	Предупреждение: Опасное электрическое напряжение! Обратитесь к инструкциям по монтажу. Отключите электропитание и обеспечьте безопасность перед началом работ. Внимание! Монтаж должен выполняться только специалистом по электротехническим работам.
et	Hoiatus: Elektrilöögi oht! Lisateavet vaadake kasutusjuhendist. Enne selle seadmega töötamist ühendage lahti ja lukustage toide. Tähelepanu! Seadet tohib paigaldada ainult elektrotehnilise kogemusega isik.	sk	Výstraha: Nebezpečné napätie! Pozrite si návod na použitie. Pred začatím prác na tomto zariadení odpojte a zablokujte napájanie. Pozor! Inštaláciu smie vykonávať len osoba s odbornými znalosťami v oblasti elektrotechniky.
fi	Varoitus: Vaarallinen jännite! Katso asennusohje. atkaise virta ja estä virran kytkeminen lukituksella ennen töiden aloittamista. Huomio! Asennuksen saa suorittaa vain henkilö, jolla on kokemusta sähkötekniikasta.	sl	Opozorilo: Nevarna napetost! Glejte navodila za uporabo. Pred delom na tej napravi izklopite in zaklenite električno napajanje. Pozor! Namestitev sme izvesti samo elektrotehnični strokovnjak.
fr	Avertissement: Tension dangereuse! Consultez les consignes d'installation. Débranchez et verrouillez l'alimentation électrique avant d'entreprendre des travaux sur cet appareil. Attention! L'installation doit être effectuée uniquement par une personne ayant une expertise en électrotechnique.	sv	Varning: Livsfarlig spänning! Se i bruksanvisningen. Frånkoppla och blockera anläggning eller en anläggningsdel innan arbete utförs. Obs! Får endast installeras av behörig elektriker.
hr	Upozorenje: Opasan napon! Pogledajte upute za ugradnju. Odspojite i isključite struju prije rada na ovom uređaju. Pažnja! Ugradnja je dopuštena samo osobama stručnim u području elektrotehnike.	tr	Uyarı: Tehlikeli gerilim! Montaj talimatlarına bakın. Bu cihaz üzerinde çalışmadan önce elektriği kesin ve kilitleyin. Dikkat! Yalnızca elektroteknik uzmanlığa sahip kişiler tarafından kurulabilir.
hu	Figyelmeztetés: Veszélyes feszültség! Lásd a használati utasítást. Válassza le és zárja ki az áramellátást, mielőtt a berendezésen dolgozni kezd. Figyelem! Az üzembe helyezés csak elektrotechnikai szakértelemmel rendelkező személy végezheti el.	zh	警告：高压危险！请参见操作手册。操作本设备前请断开并锁定电源。注意！安装仅限专业电工人员。

CR-S024VDC1R, CR-P024DC2, CR-P024AC2G, CR-M024AC4L, CR-M024DC4LDG, CR-U024DC3L

Pluggable interface relay

Disclaimer

The information presented in this publication does not form part of any quotation or contract, is believed to be accurate and reliable and may be changed without notice. No liability will be accepted by the publisher for any consequences of its use. Publication thereof does not convey nor imply any license under patent - or other industrial or intellectual - property rights.

Target audience

This document is intended for ABB customers and for professional recyclers.

Package

You can recycle all materials used in the package. To avoid pollution caused by unnecessary transportation, the factory does not take back used packages. Contact your local ABB office for package recycling instructions if needed. ABB recommends package recycling as it preserves raw materials and reduces waste being landfilled.

Product manuals and sales brochures

To save natural resources and reduce paper waste, all product manuals are available in ABB Library and on the Internet.

Dismantling

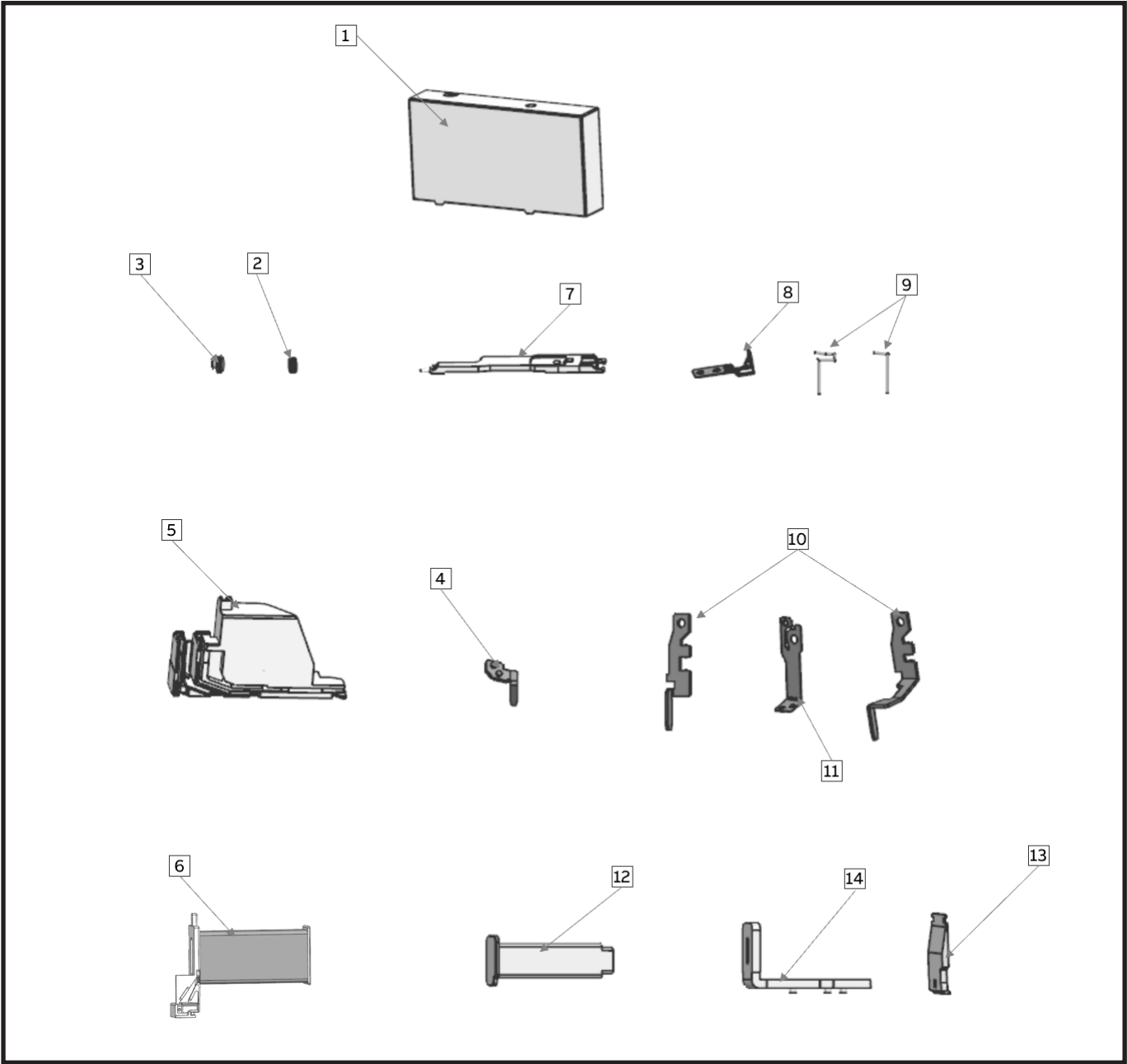
You can dismantle the the pluggable interface relay manually or in a shredding machine. The chapter is divided in two sections on basis of the dismantling method.

Disposal

The main parts of the pluggable interface relay can be recycled to preserve natural resources and energy. Product parts and materials should be dismantled and separated. Generally all metals, such as steel, aluminum, copper and its alloys, and precious metals can be recycled as material. Plastics, rubber, cardboard and other packaging material can be used in energy recovery.

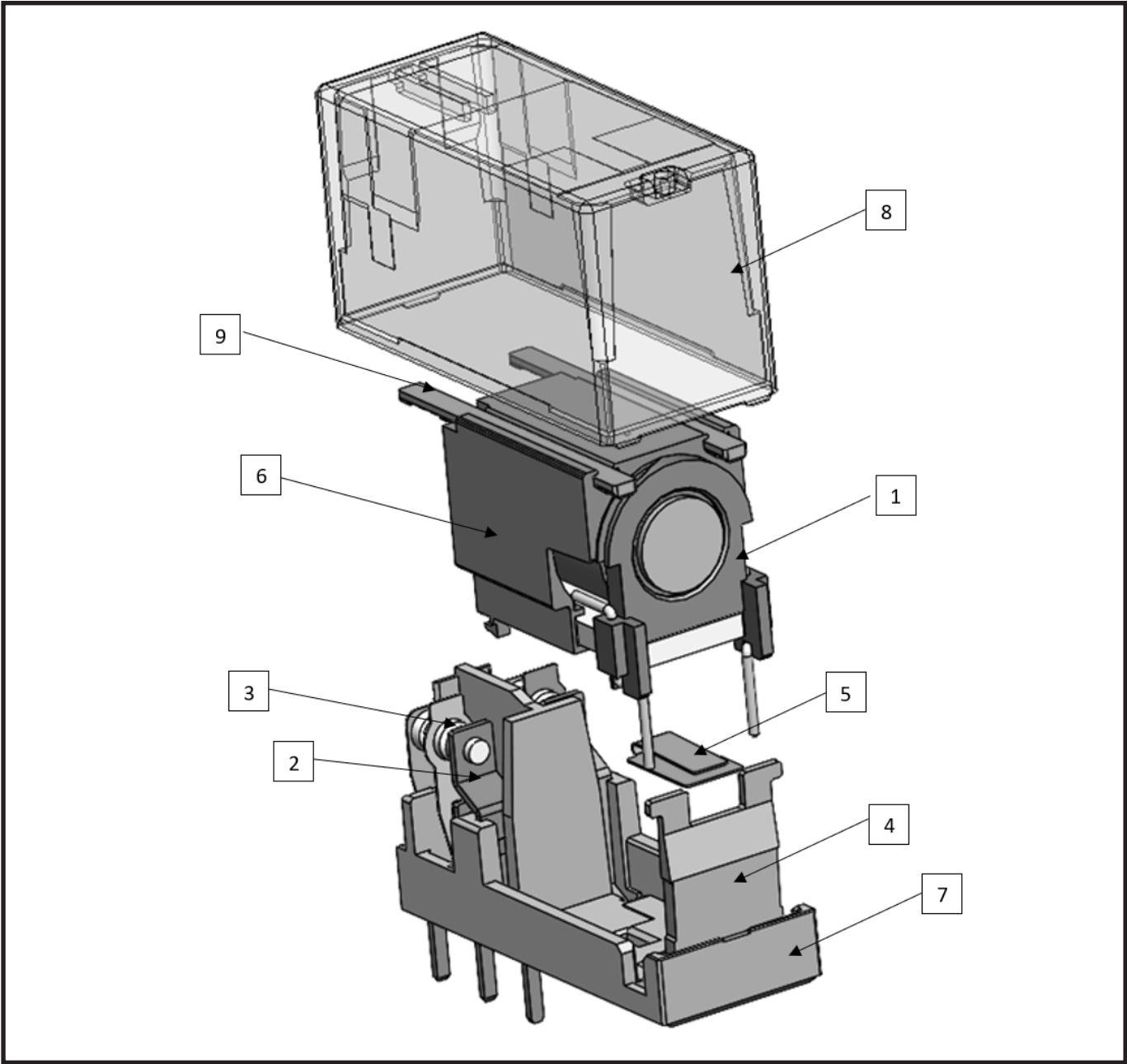
To aid recycling, plastic parts are marked with an appropriate identification code. Contact your local ABB distributor for further information on environmental aspects. End of life treatment must follow international and national regulations.

Materials of CR-S024VDC1R



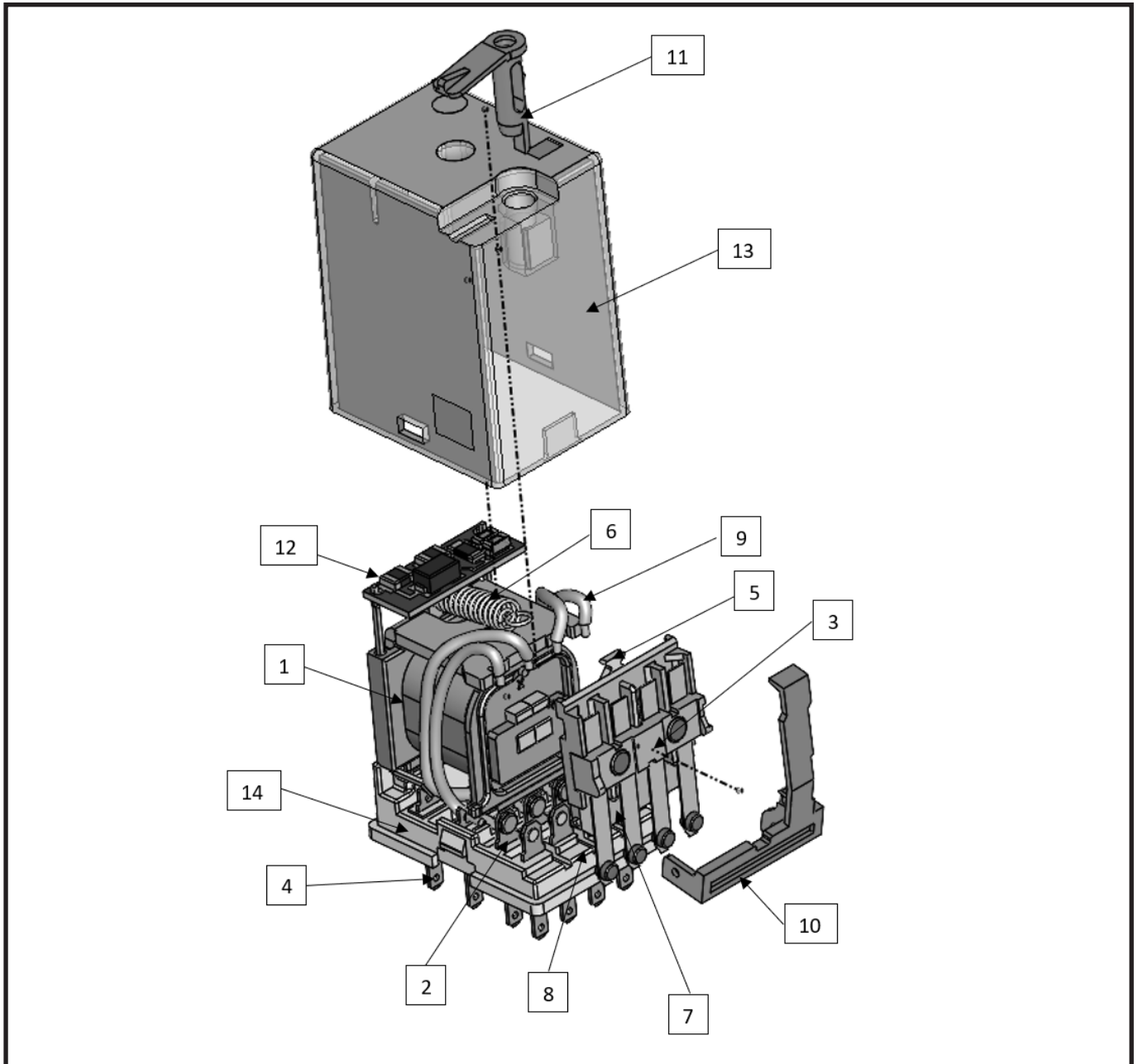
No.	Parts	Qty.	Category	Materials
1	Base	1	Plastic	Thermoplastic
2	Moving contact	1	Metal	Silver alloy
3	Static contact	2	Metal	Silver alloy
4	Moving terminal	1	Metal	Copper
5	Base	1	Plastic	Thermoplastic
6	Coil component	1	Plastic and metal	Thermoplastic and metal wire
7	Actuator	1	Plastic	Thermoplastic
8	Hing spring	1	Metal	Stainless steel
9	Coil terminal	2	Metal	Bronze
10	Static spring	2	Metal	Coppper
11	Moving spring	1	Metal	Copper alloy
12	Core	1	Metal	Pure iron
13	Armature	1	Metal	Pure iron
14	Yoke	1	Metal	Pure iron

Materials of CR-P024DC2, CR-P024AC2G



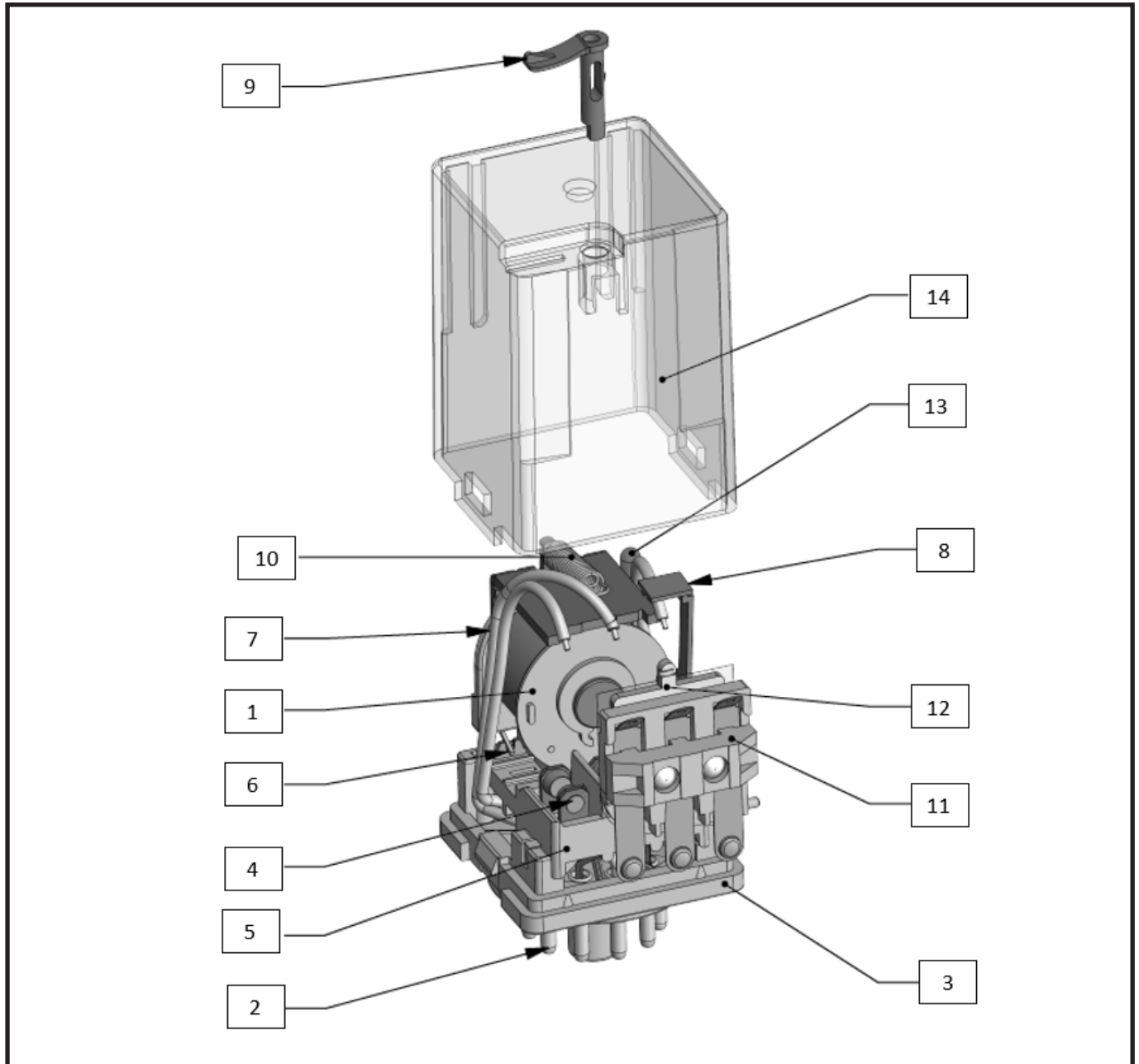
No.	Parts	Qty.	Category	Materials
1	Coil set	1	Plastic and metal	Copper, copper alloys, thermoplastic, steel, tin
2	State contact plate set	4	Metal	Copper, copper alloys, silver, tin, nickel
3	Operating contacts plate set	2	Metal	Copper, silver, tin, aluminum, nickel
4	Armature	1	Metal	Steel
5	Armature holder	1	Metal	Bronze
6	Insulating housing	1	Plastic	Thermoplastic
7	Contact plate	1	Plastic	Thermoplastic
8	Relay housing with label	1	Plastic	Thermoplastic
9	Accuator	2	Plastic	Thermoplastic

Materials of CR-M024AC4L, CR-M024DC4LDG



No.	Parts	Qty.	Category	Materials
1	Coil set	1	Plastic and metal	Copper, copper alloys, thermoplastic, steel, tin
2	State contact plate set	8	Metal	Copper, copper alloys, silver, tin, nickel
3	Operating contacts plate set	1	Plastic and metal	Copper, silver, aluminum, thermoplastic, nickel
4	Coil and operating contacts pins	6	Metal	Brass, tin
5	Armature	1	Metal	Steel
6	Spring	1	Metal	Steel
7	Insulating plate	1	Plastic	Thermoplastic
8	Insulating insert	1	Plastic	Thermoplastic
9	Wire	4	Plastic and metal	Thermoplastic, copper, tin
10	Indicator	1	Plastic	Thermoplastic
11	Test button	1	Plastic	Thermoplastic
12	Printed circuit board	1	Printed circuit board	Printed circuit board
13	Relay housing with label	1	Plastic	Thermoplastic
14	Contact plate	1	Plastic	Thermoplastic

Materials of CR-U024DC3L



No.	Parts	Qty.	Category	Materials
1	Coil set	1	Plastic and metal	Copper, copper alloys, thermoplastic, steel, tin
2	Pins	11	Metal	Brass
3	Plinth	1	Plastic	Thermosetting
4	State contact plate set	6	Metal	Copper, copper alloys, silver, tin, nickel
5	Contact plate	1	Plastic	Thermosetting
6	Coil pins	2	Metal	Copper, tin
7	Wire	3	Plastic and metal	Thermoplastic, copper, tin
8	Indicator	1	Plastic	Thermoplastic
9	Test button	1	Plastic	Thermoplastic
10	Spring	1	Metal	Steel
11	Operating contacts plate set	1	Plastic and metal	Copper, silver, aluminum, thermoplastic, nickel
12	Armature	1	Metal	Steel
13	Diode, resistor	1	Electronics	Electronics
14	Relay housing with label	1	Plastic	Thermoplastic

Products with requirements for special treatments.

CR-M024AC4L, CR-M024DC4LDG

No.	Parts	Comment
12	Printed circuit board	Electronical component

CR-U024DC3L

No.	Parts	Comment
13	Diode, resistor	Electronical component

