

Type SCT-983

Indoor/outdoor current transformer

Product features

- Single, dual, and multi ratios
- 600 Volt, 10 kV BIL, 60 Hz
- Primary amperes: 50 - 6000
- Approximate weight: 50 lbs. (23 kg)

Application

The SCT-983 indoor/outdoor, window-type current transformer is rated for use on 600 volt systems with 10 kV BIL. Primary current ratios are available from 50:5 to 6000:5 at 60 Hertz, with a rating factor of up to 4.0. This dry-type, solid-cast current transformer will operate with high accuracy for metering or relaying applications.

Mechanical description

The core and coil assembly is wound and encapsulated in a molded cast resin with a standard 5.0" window (other sizes available from 2.0" to 7.0"). An optional primary bus bar with NEMA 4-hole pads can also be provided (5500 A max). The secondary terminals are ¼"-20 copper studs with associated hardware. An optional removable terminal box with two (2) 1" NPT conduit hubs can be provided for outdoor use.

Accuracy performance

The SCT-983 will operate with 0.3 class accuracy for metering with burdens of B-0.1 up to B-1.8, and up to C400 for some relay applications. The transformer is accurate through its rating factor, and can be used continuously to this level.

Mounting

The SCT is designed for mounting in an upright, underhung, or cantilever position. Mounting slots are provided on the aluminum base.

Testing

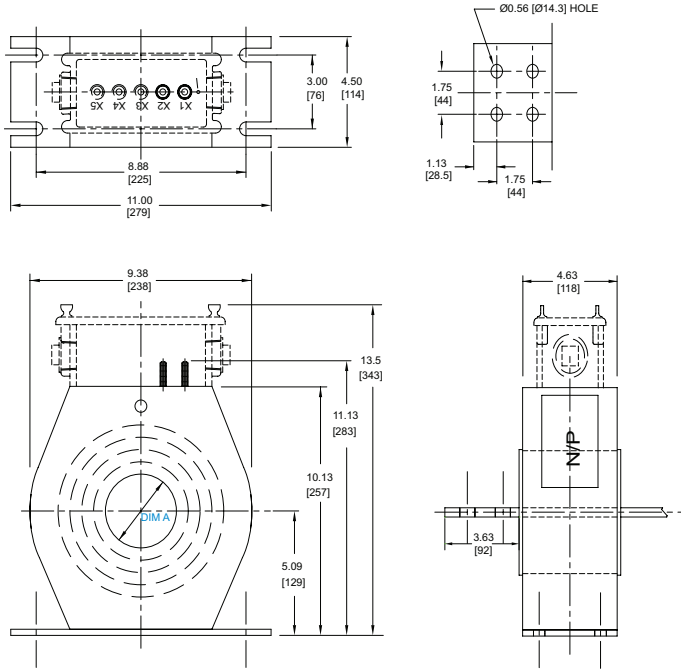
This unit can be tested to all applicable IEEE, CSA, or IEC standards as requested.

Options

The SCT is available with a primary bus bar kit and/or secondary terminal box. The unit can be offered in single or dual core designs. Contact factory for other needs.



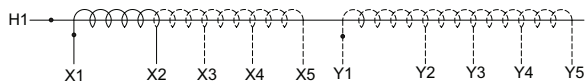
Unit dimensions



SCT-983

Window dimensions

Model	Dim A (in [mm])
SCT-983 (std)	5.0 [127]
SCT-983A	6.0 [153]
SCT-983B	7.0 [178]
SCT-983C	4.0 [102]
SCT-983E	3.0 [76]
SCT-983D	2.0 [51]



Wiring diagram

Selection guide

Ratio	IEEE metering accuracy	Relay accuracy	Rating factor	Style number
50:5	±5% - 2.5VA	C10	4.0	A49S5005010
100:5	1.2B-0.1	C20	4.0	A49S1015029
200:5	0.6B-0.1	C40	4.0	A49S2015049
300:5	0.3B-0.1	C60	4.0	A49S3015069
400:5	0.3B-0.2	C75	4.0	A49S4015089
500:5	0.3B-0.5	C100	4.0	A49S5015109
600:5	0.3B-0.9	C100	4.0	A49S6015109
800:5	0.3B-1.8	C150	3.0	A49S8015159
1000:5	0.3B-1.8	C200	2.0	A49S1025209
1200:5	0.3B-1.8	C250	2.0	A49S1225259
1500:5	0.3B-1.8	C250	1.5	A49S1525259
2000:5	0.3B-1.8	C400	1.5	A49S2025409
2500:5	0.3B-1.8	C400	1.0	A49S2525409
3000:5	0.3B-1.8	C400	1.0	A49S3025409
4000:5	0.3B-1.8	C400	1.0	A49S4025409
5000:5	0.3B-1.8	C400	1.0	A49S5025409
6000:5	0.3B-1.8	C400	1.0	A49S6025409

Available in dual and multi-ratio designs.

IC Approval (AE-1470) is noted by bold catalog number.

One second thermal/mechanical ratings: 80 x full winding I_{nom} / unlimited mechanical.

Units available with secondary terminal box for outdoor use. Add a "T" as the last digit of style number.

Additional styles available upon request. Contact your ABB sales representative or call +1-252-827-3212 for more information.

For more information please contact:

ABB Inc.

Medium Voltage Distribution Components

3022 NC 43 North

Pinetops, NC 27864

USA

Phone: +1 252 827 3212

Fax: +1 252 827 4286

www.abb.com/mediumvoltage

Note:

The information contained in this document is for general information purposes only. While ABB strives to keep the information up to date and correct, it makes no representations or warranties of any kind, express or implied, about the completeness, accuracy, reliability, suitability, or availability with respect to the information, products, services, or related graphics contained in the document for any purpose. Any reliance placed on such information is therefore strictly at your own risk. ABB reserves the right to discontinue any product or service at any time.

Copyright 2012 ABB.

All rights reserved.

Power and productivity
for a better world™

