



# ABB Cylon® ASPECT®

Web enabled building automation and energy management.  
Seamlessly integrating buildings and business.

---

# ABB Cylon® ASPECT®

## brings building management into your everyday work

If you're confident using mainstream business tools, then you've already mastered ABB Cylon® ASPECT® building energy management system.



### Schedule a meeting

If you can use a corporate calendar to schedule a meeting, then you can adjust a room for zone occupancy.



### Turn on lights

If you can use an App on your smart phone, then you can turn lights on in Shanghai from your office in London.



### Get a message on PushOver®

If you can get a message on PushOver®, then you can know instantly when a critical system is down.

---

Manage your building the same way you manage your business with ABB Cylon® ASPECT®.

### Award-winning

Award-winning ABB Cylon® ASPECT® is a powerful and dynamic interface that allows users to monitor and control their facilities from anywhere at any time. ABB Cylon® ASPECT® provides the tools you need to gain insight into your buildings' performance and arms you with the intelligence to react to any situation that may adversely affect energy costs, business performance and ultimately, your bottom line.

### Straightforward and uncomplicated

With ABB Cylon® ASPECT® you no longer need to learn how to operate a separate, proprietary building energy management system (BEMS) to get real-time information, analyse data, make operational decisions, or even to change settings. You can do it all, more naturally, through the business programs and Apps you are already using on your computer, tablet and smart phone.

- HTML5 format allows users to view web content on multiple devices without using Flash and third-party plug-ins. Facilities managers and end users can modify trends, set-points, schedules and more – on the fly – from web-enabled PCs and mobile devices.
- By leveraging push notification services such as Twitter® and PushOver®, ABB Cylon® ASPECT® sends reliable instant notices to Android™, iOS® or desktop devices in greater detail than traditional SMS.



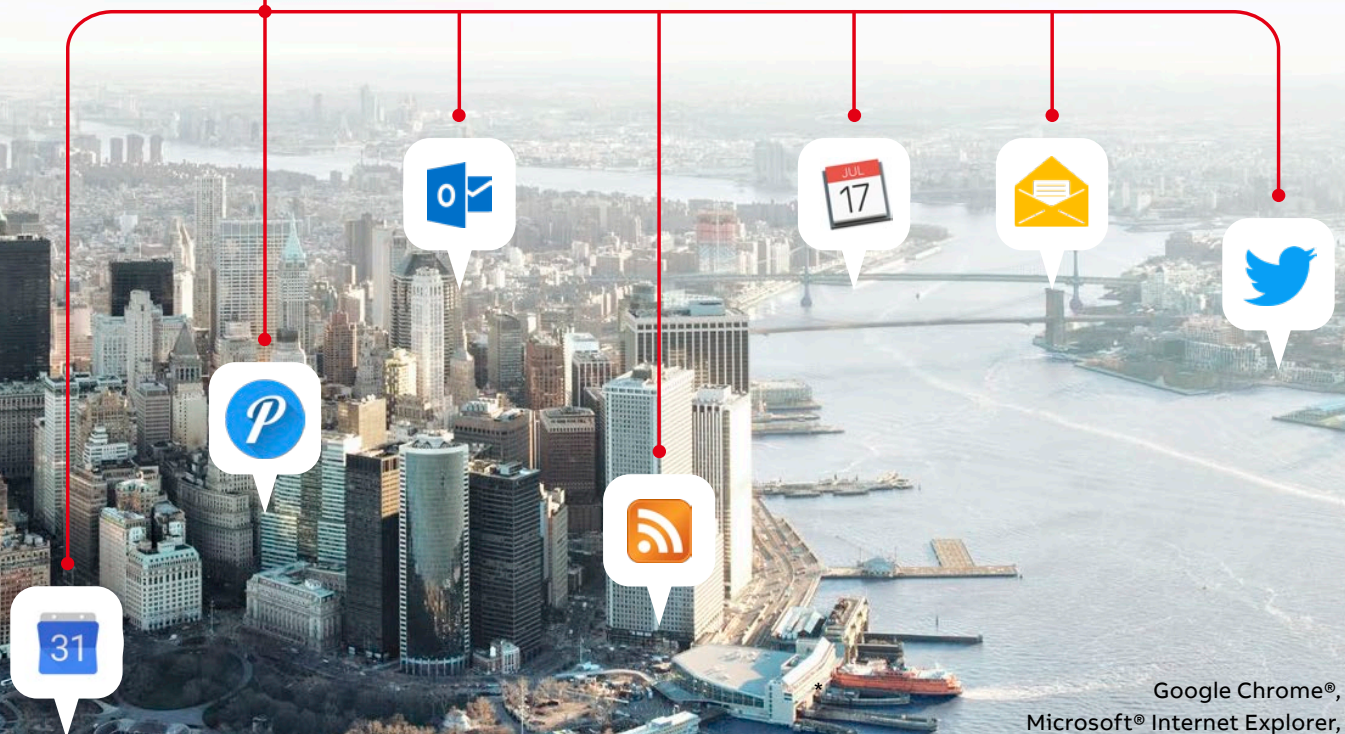


- With the integration of Internet weather resources, ABB Cylon® ASPECT® can predict energy loads and other building energy management requirements. With some simple custom programming, BEMS routines can automatically shift during unseasonal weather patterns to ensure optimal comfort and energy use.
- Reports can be generated and sent via email – automatically – at regularly scheduled intervals or immediately, when triggered by equipment failures and alarms.
- ABB Cylon® ASPECT® provides enhanced design and operational efficiencies when used with Unitron and the CB Series of BACnet® controllers.



## Work with what you already know

ABB Cylon® ASPECT® technology works seamlessly with commonly-used business tools and any standard Internet browser.\*



Google Chrome®,  
Microsoft® Internet Explorer,  
Safari®, Firefox® and Opera®

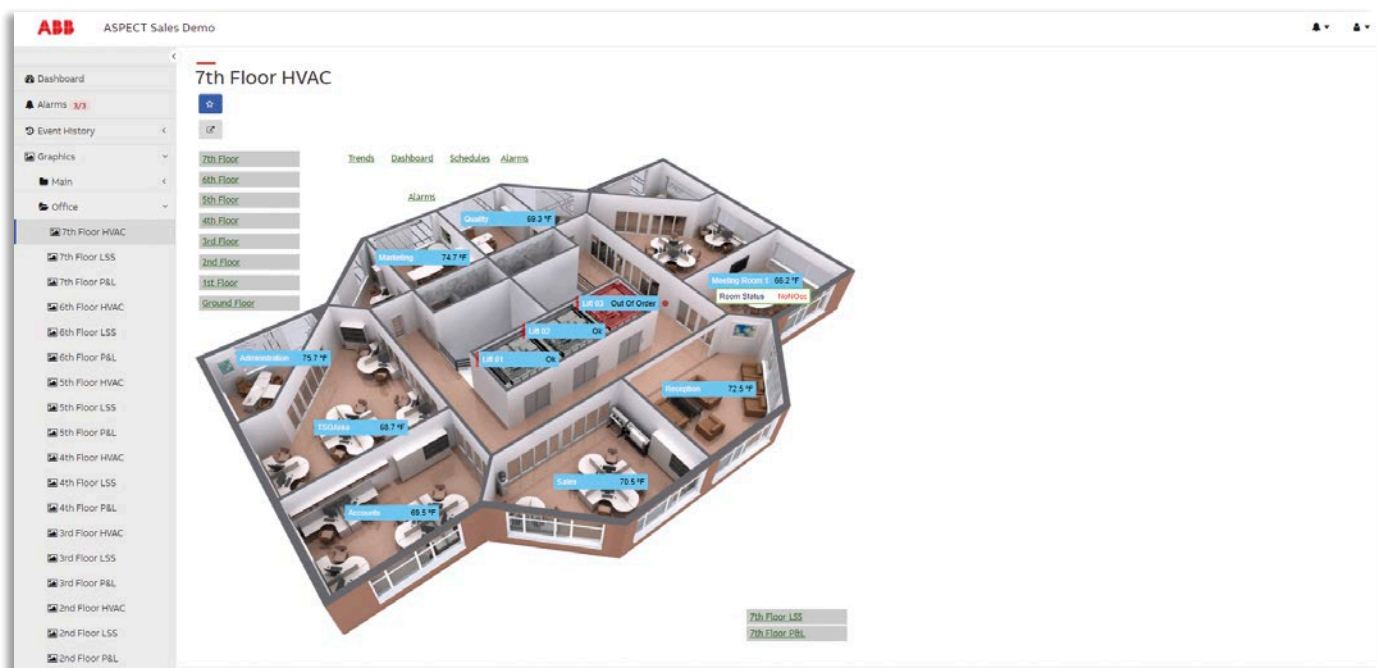
# Fast programming & productivity – increased safety & security

01 programming  
& productivity



ABB Cylon® ASPECT® combines real-time integrated control, supervision, data logging, alarming, scheduling and network management functions with Internet connectivity and web serving capabilities. Guidelines help to create projects that run more efficiently and faster to develop.

- Project templates are configured with limits and default property values that reflect the target platform. Deployment seatbelt checks recommended limits per target platform.
- Interface via eXplore Touch Screen  
Use eXplore graphical Touch Screen to display a range of colorful icons and custom command menus, providing end users with quick and easy feedback of the access control operation. Customise the App to display and control designated points.



## 01 safety & security



Cyber criminals are crafty, but ABB Cylon® ASPECT® puts some extremely effective barriers in their way. Integration with SSL and HTTPS takes security to a whole new level of fortification against hacking and unauthorized intrusions.

- Communication with the browser is fully encrypted.
- As a component of a 21CFR11 system, ABB Cylon® ASPECT® is able to track where and when system changes were made, and who made them.



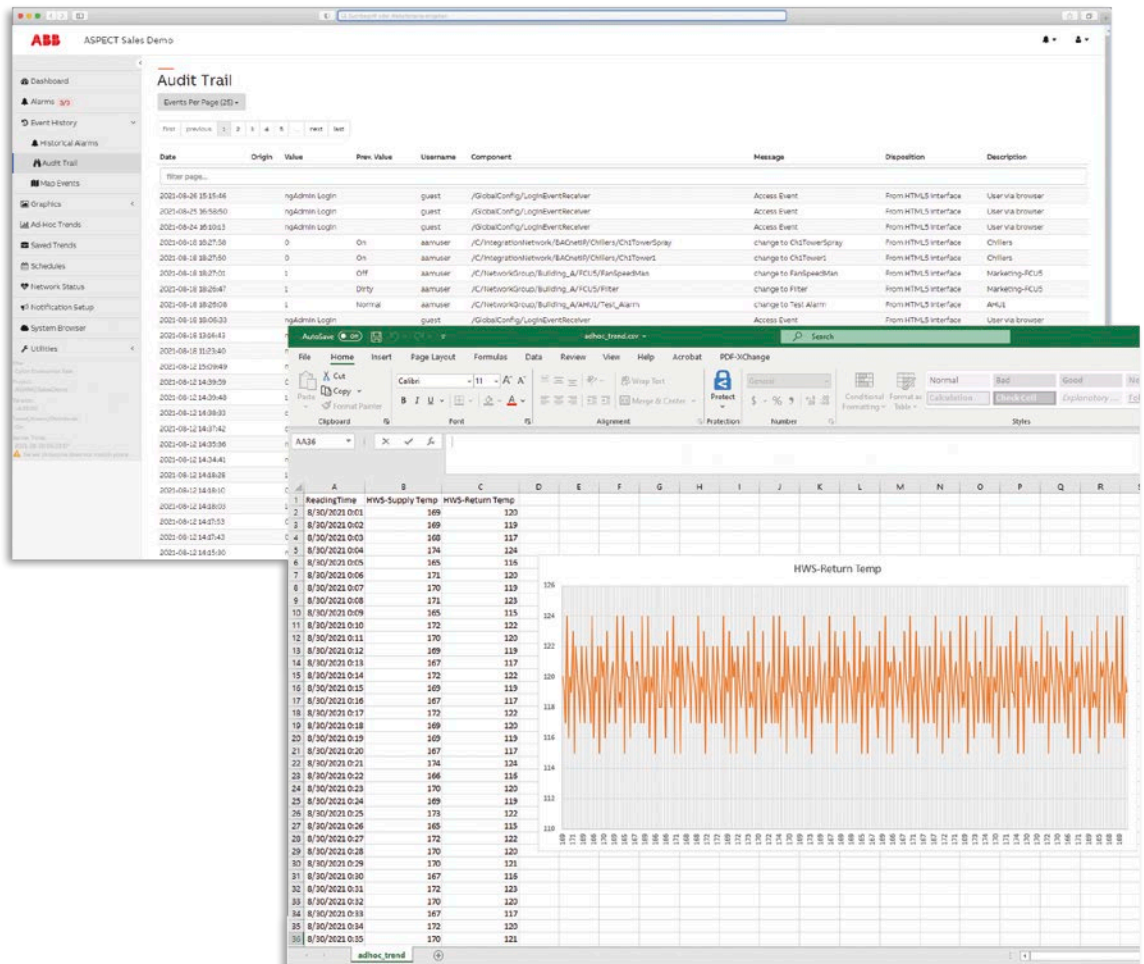
# The leading building management software platform for managing building performance



Straightforward and uncomplicated ABB Cylon® ASPECT® is a leading energy management and analytics platform that uncovers savings and improves performance. The unique and intuitive analytics along with powerful reporting tools make your job easier and increases building value.

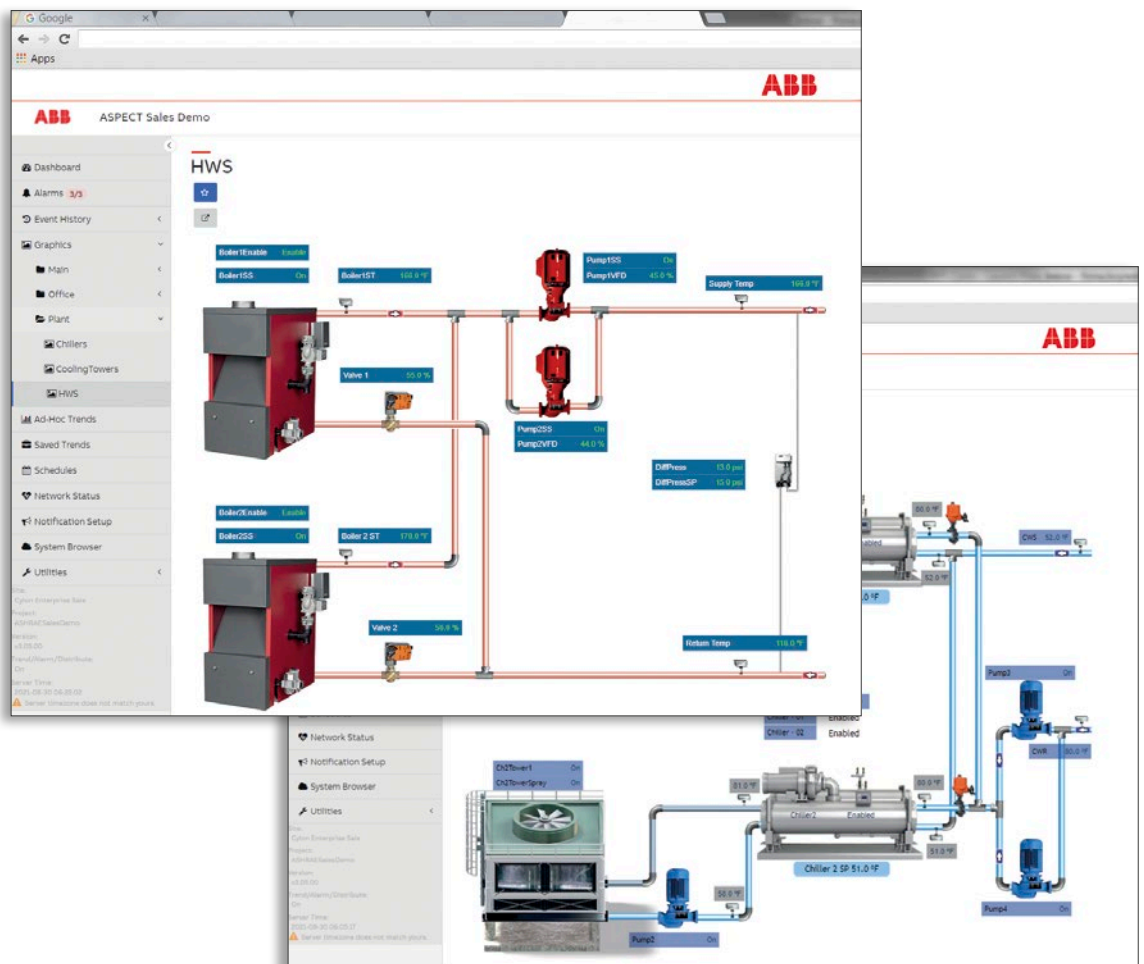
The ABB Cylon® ASPECT® dashboard interface is all about you: keeping watch over your concerns, helping you take care of your responsibilities, and providing the insight that will help you achieve your objectives. It's easy to individualise the dashboard for the work that you do.

Trend Charting provides you with powerful analysing and reporting tools to use no matter where you have decided to record historical data. Charting options allow you to select trends from a tree rather than a table, saving development time.





- Building data that is stored and retrieved through MySQL® or SQLite databases allow for simplified data use through programs like SAP® Crystal Reports and Microsoft Excel®.
- Energy data, trends, reasons, data anomalies, user changes and more can be mined and formulated into reports through programs that are already being used.
- Simplify energy management by implementing enterprise-wide policies through batch changes to set-points and schedules.
- Compatibility with MATRIX Series and NEXUS Series to support a range of buildings, from skyscrapers to smaller multi-site applications.
- An extensive graphics library enhances usability and reduces training time.
- Expanded control templates for HVAC equipment.
- Backward compatibility/upgrades for existing systems.
- Enterprise tools, such as mapping, for larger portfolios.
- Trend Charting with up to 9000 samples per project.
- Up to 45 exceptions entries per schedule.
- Compatibility with CXpro<sup>HD</sup>. CXpro<sup>HD</sup> provides efficient site configuration.
- Data from CXpro<sup>HD</sup> can be easily imported into ASPECT® making your project easy to engineer and deliver. All point values are automatically populated and ready for immediate use in ASPECT-Studio<sup>TM</sup>, reducing project development and engineering time.



# An ABB Cylon® ASPECT® for every solution



## Multiple Building Portfolios

NEXUS Series gives you access to traditional BEMS capabilities, centralised web access, historical database storage and more. They provide rigorous building control routines for facilities anywhere in the world.



ABB Cylon® ASPECT®-Enterprise provides the same extensive BEMS features, installed on VmWare servers to meet common IT specifications for hosting by the end-user. This gives you greater freedom and fewer restrictions for on-site installations.

## Smaller Buildings

The MATRIX Series of network engines provides traditional building control features such as alarming, scheduling, trending and custom programming. The result is a flexible area control solution for BEMS.



## Put it all together

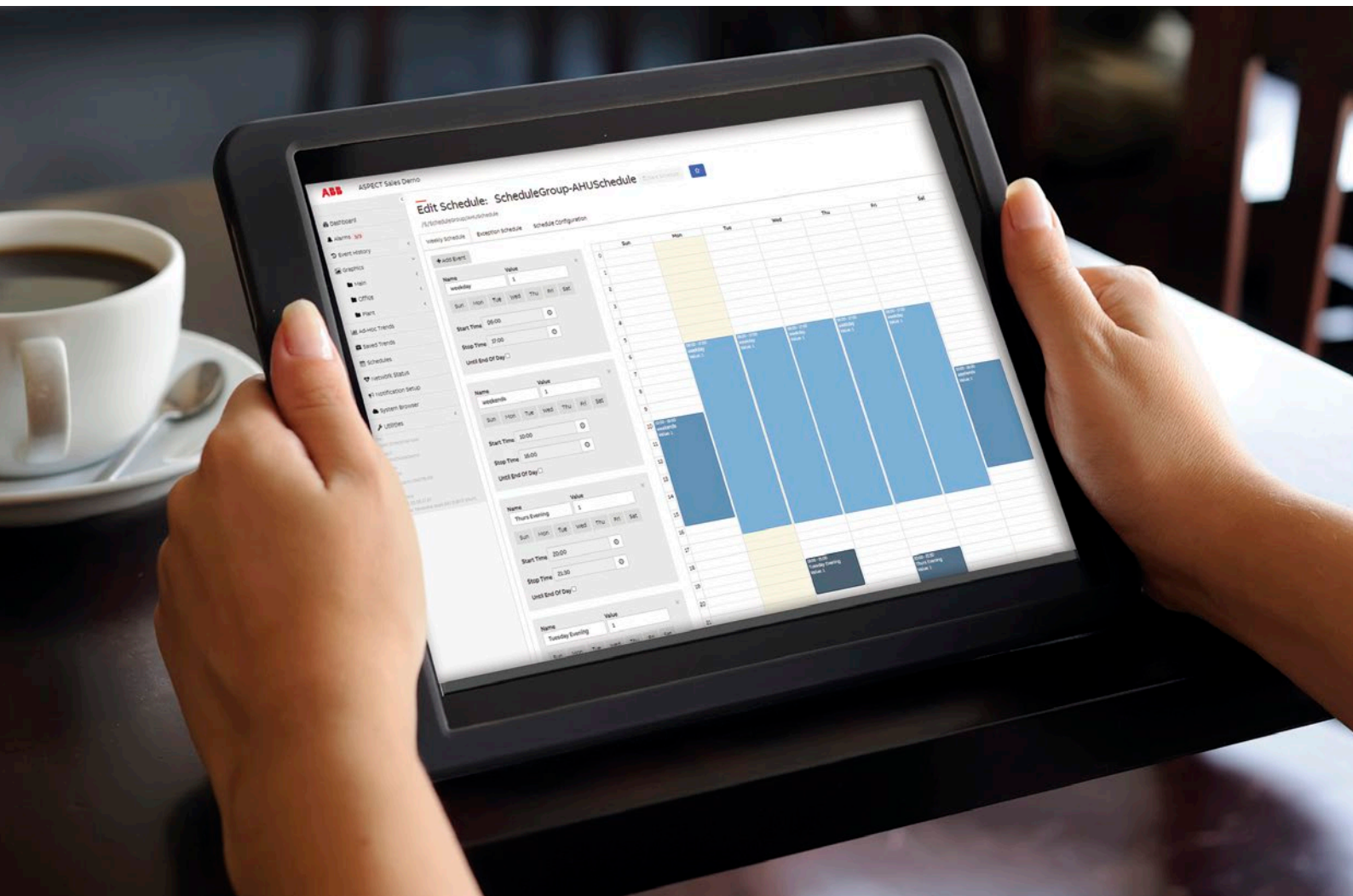
ABB Cylon® ASPECT®-Studio, our innovative and simplified system design tool, makes it easy to build and configure your BEMS to match the way you work. This graphical programming tool is used to create and define the system, including logical sequences, historical entities, schedule functions and user interface environments. It allows you to view and change BEMS settings from web-enabled devices with no additional plug-ins or engineering.



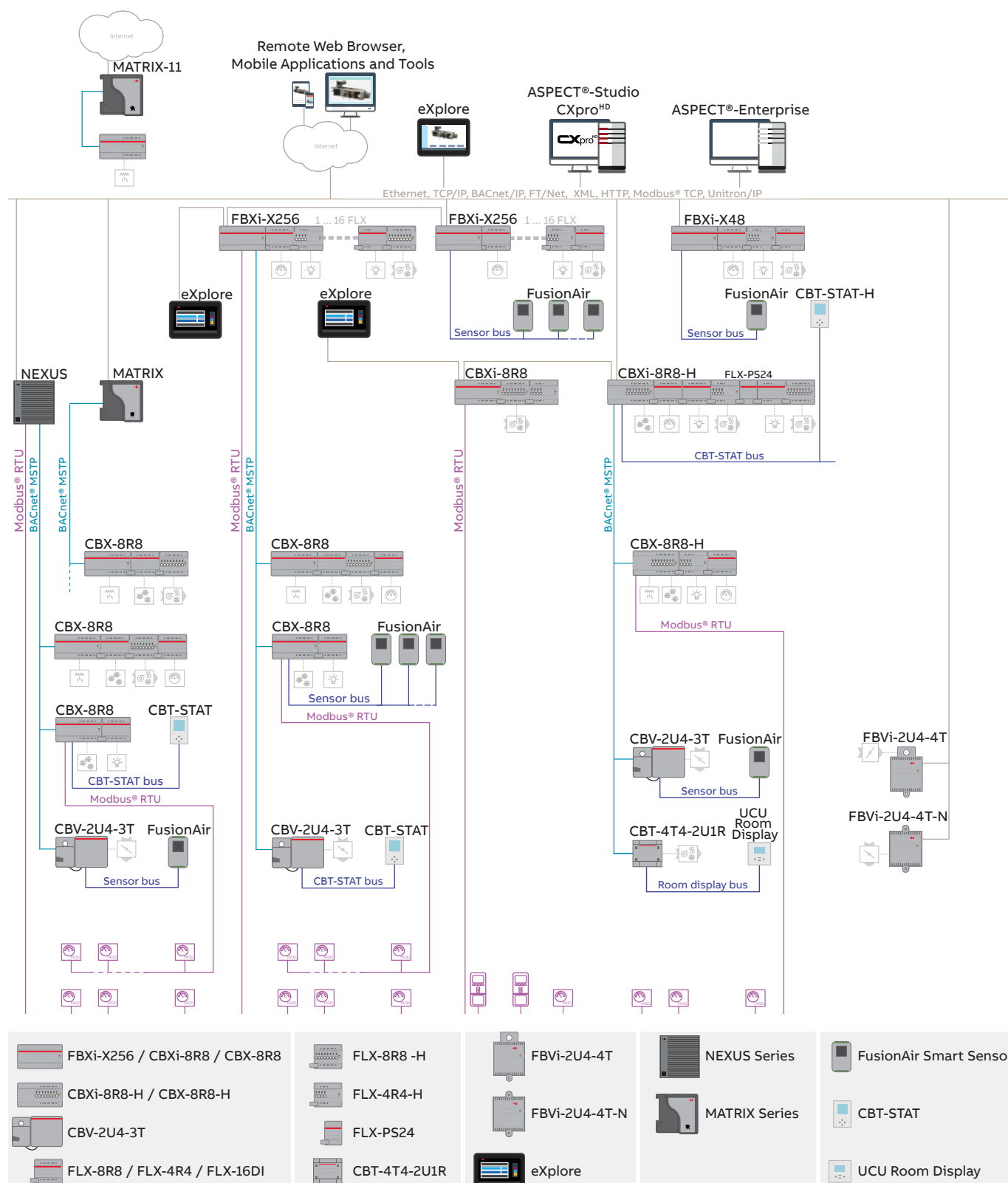
ABB Cylon® ASPECT® is the most interconnected, scalable building energy management and analytics platform, specifically designed for commercial buildings and the people who operate them.

ABB Cylon® ASPECT® offers improved usability, a value-added and simplified licensing module, flexible configurations, software integrations integration system and application data that allows the creation of building operations easier to monitor, manage and optimise.

—  
Globally serving all building sizes, comprehensive ABB Cylon® ASPECT® building solution simplifies integration by using a secure platform that easily scales to meet application requirements for today and tomorrow.



\_\_\_\_\_



## This image shows a single sheet of white paper with horizontal ruling lines. The lines are evenly spaced and run across the width of the page. There are no margins, text, or other markings on the paper.



---

**More information:**  
[solutions.abb/cylon](https://solutions.abb/cylon)

