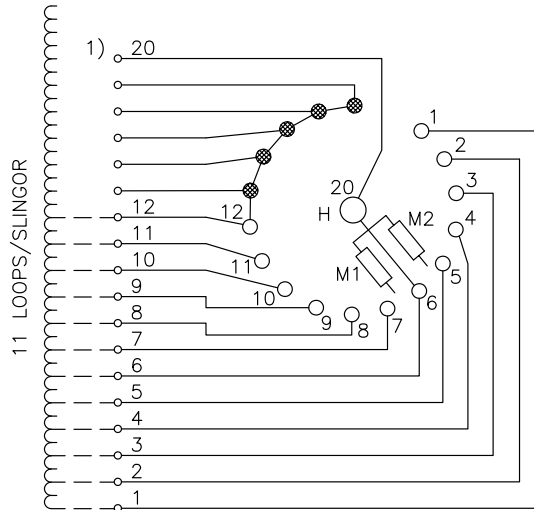


We reserve all rights in this document and in the information contained therein. Reproduction, use or disclosure to third parties without express authority is strictly forbidden.
© ABB 19

Pos. Läge	H connects H förbinder
1	1 - 20
2	2 - 20
3	3 - 20
4	4 - 20
5	5 - 20
6	6 - 20
7	7 - 20
8	8 - 20
9	9 - 20
10	10 - 20
11	11 - 20
12	12 - 20

On-load tap-changer type UZEL., UZFL., 12 tap positions, linear switching.
Max. effective No. of turns in pos. 1.
The tap-changer is delivered set in pos. 6.

Lindningskopplare typ UZEL., UZFL., 12 lägen, linjär koppling.
Max. antal effektiva varv i läge 1.
Lindningskopplaren levereras inställd i läge 6.



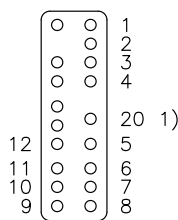
The tap-changer is shown in pos. 6
Lindningskopplaren visad i läge 6

H Main contact M1, M2 Transition contacts
Huvudkontakt Motståndskontakter

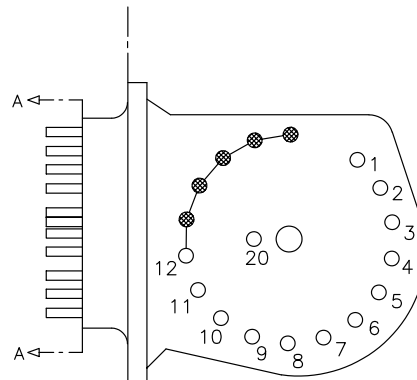
1) Connections between the terminals 20 of the three phases are included in the star-point type.

Förbindningar mellan uttag 20 i de tre faserna ingår i nollpunktsutförandet.

Terminal board
Plint



Section A-A
Sektion A-A



Transformer tank Tap-changer tank
Transformatorlåda Lindningskopplarlåda

Drawn by Design checked by	Sheet	Year	Week	Cont			
	Form No.	Dept	Year	Week	1	Reissued	MISM 18 07
	Rev Ind	Revision	Appd	Year	Week	Accepted by qual control R.Yngvesson	Accepted for prod by
	Rev Ind	Description (English)	DATAORIGINAL			Description (own language)	
Design checked by	Design checked by B-O.Stenestam		Drawn by L.Bergman		Description (own language) KOPPLINGSSCHEMA		File name 0393-8
	Drawing checked by M.Hedlund		Issued by Dept Year Week COM/TKO 97 33		Lang	Sheet 1	Rev Ind
	Asea Brown Boveri		5492 0393-8			Cont	-