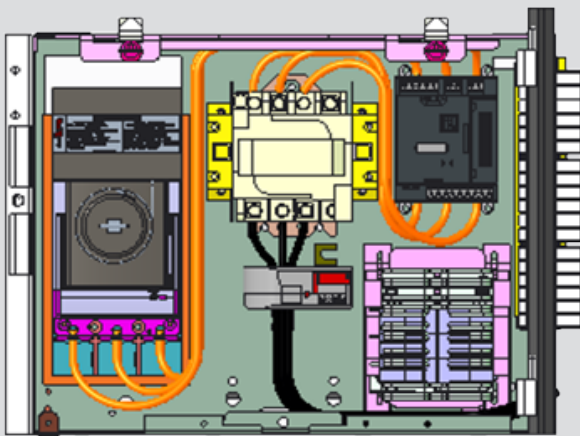


Smart Starter Units

Life cycle services for legacy GE 2700, 7700, Spectra and 8000-line motor control centers



The new Tmax XT based smart starter units allow repair, expansion, life extension, and modernization for existing motor control centers at customer sites globally. It is a UL 845 rated OEM product, which is designed to work seamlessly with existing customer equipment that may be up to 60 years old. Smart motor relay options include the ABB UMC100.3 and the Schweitzer SEL 849.

01

01 Diagram of a 12 inches high, size 1 FVNR starter with UMC100.3 relays and ground fault protection.

Legacy GE motor control products (2700, 7700, Spectra and 8000-line) have been manufactured since 1960 and are still used extensively for ANSI / NEMA applications globally.

02 An 18 inches smart starter door with UMC100.3 HMI.

The overall structure of the units manufactured by ABB is very similar to existing Fastrac unit designs with SACE Tmax XT circuit breakers and 300-line contactors. Note that the door is right hinged and mounted to the unit, matching the original 8000-line design. A rotary operating handle is used, similar to the original 7700-line design.

Features:

- Over/under current protection
- Ground fault protection
- Remote communication options
- Maintaining the existing UL 845 MCC ratings
- Unit types: Feeder, FVNR, FVR, 2S1 W and 2S2 W
- Unit sizes: NEMA 1 – NEMA 4
- Construction: plug in/stab in
- Offer package can include access to ABB Ability™ – full monitoring of current voltage with a variety of trip functions

Retrofitting starter units with the ABB solution is beneficial for the following reasons:



- Maintaining your installed base and replacing obsolete components
- 50% cheaper cost and faster delivery of a retrofit in comparison to opting for a new motor control center
- A more sustainable option that extends the lifespan of existing equipment, reduces the need for new manufacturing, and minimizes waste generation

02

Fast and easy replacement of existing units:

ABB’s new smart starter units are functionally equivalent to existing GE units. Once field wiring is disconnected, the old bucket is removed by loosening a jack screw. The new bucket stabs into the existing vertical section, it is bolted in with the jack screw, and field wires are terminated.

For repairs at an operating facility, replacement of an entire unit is the fastest option to return the downstream load to service.

Additionally, when reconfiguring loads in a facility or modernizing an entire MCC lineup, new Fastrac units can be a cost-effective option. When considering a replacement alternative, site labor is extended to:

- Disconnecting all field cabling and pulling it from the lineup
- Disassembling and removing the existing lineup
- Assembling and installing a new lineup
- Testing and commissioning the new lineup
- Repulling and terminating all cabling

An upgrade can be accomplished much faster and less invasively by simply removing and replacing each unit.

Pricing:

When considering a large purchase of new units in the USA, please inquire about ABB’s “quick start buckets” program. For volume purchasing, up to a 50% discount from list price is available.

Unit’s height

Pluggable bucket heights available for full voltage non-reversing (FVNR):

FVNR	UMC100.3	SEL 849
Size 1	12” – 48”	18” – 48”
Size 2	12” – 48”	18” – 48”
Size 3	24” – 48”	24” – 48”
Size 4	30” – 48”	30” – 48”

Pluggable bucket heights available for full voltage reversing (FVR):

FVR	UMC100.3	SEL 849
Size 1	18” – 36”	18” – 48”
Size 2	24” – 36”	24” – 36”
Size 3	42” – 48”	42” – 48”
Size 4	48”	48”

ABB Inc.
Electrification Services
305 Gregson Dr.
Cary, NC 27511 USA

For service, call:
1-888-434-7378 (US)
1-540-387-8617 (International)

www.electrification.us.abb.com/services

We reserve the right to make technical changes or modify the contents of this document without prior notice. With regard to purchase orders, the agreed particulars shall prevail. ABB Inc does not accept any responsibility whatsoever for potential errors or possible lack of information in this document.

We reserve all rights in this document and in the subject matter and illustrations contained therein. Any reproduction, disclosure to third parties or utilization of its contents – in whole or in parts – is forbidden without prior written consent of ABB Inc. Copyright© 2024 ABB All rights reserved