

## Course Description

# PROCONTROL P14

## DE567 E

Maintenance and Diagnostics by PDDS and CDS



### Course Goal

The course goal is to prepare students to use the Programming-, Diagnosis- and Display System (PDDS) and/or the Control System Diagnostic Station (CDS) for service- and diagnosis tasks in the PROCONTROL P14 system.

### Learning objectives

Upon completion of this course, the students will have knowledge about:

- the basics and the application of PDDS
- the basics and the application of CDS

### Participant profile

Maintenance and service personnel, commissioning personnel

### Prerequisites and Recommendations

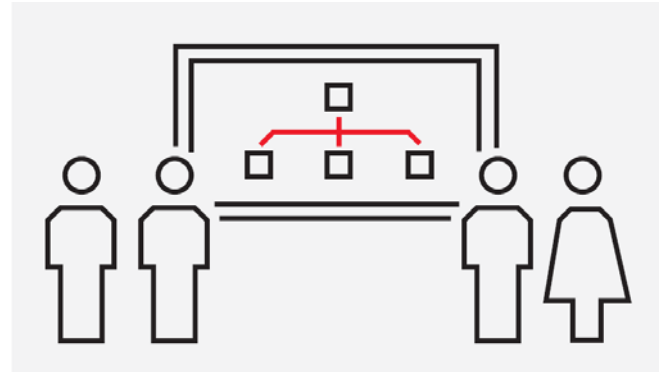
Fundamentals of plant automation and knowledge of modern power plant control systems and course DE561

### Main Topics

- Programming-, Diagnosis- and Display System (PDDS):  
*Overview, Tools*
- Use of PDDS:  
*Generating and editing lists, data transfer to the modules, online change of module data (function blocks, limit values and parameters), signal measuring and simulation, diagnosis, data saving, archiving*
- Practical exercises PDDS
- Control System Diagnostic Station (CDS):  
*Overview, Basics*
- Use of CDS  
*User interface, navigation and visualization, configuration, diagnosis*
- Practical exercises CDS

### Address

ABB AG  
Power Generation  
Kallstadter Straße 1  
D - 68309 Mannheim  
Germany



### Methods

Presentations/Lectures, discussions, demonstrations, practical exercises

### Course Duration

3 days

### Contact

Siegmar Hansch  
Phone: +49 621 381 7725  
Fax: +49 621 381 4737  
E-Mail: [siegmar.hansch@de.abb.com](mailto:siegmar.hansch@de.abb.com)  
[www.abb.com](http://www.abb.com)