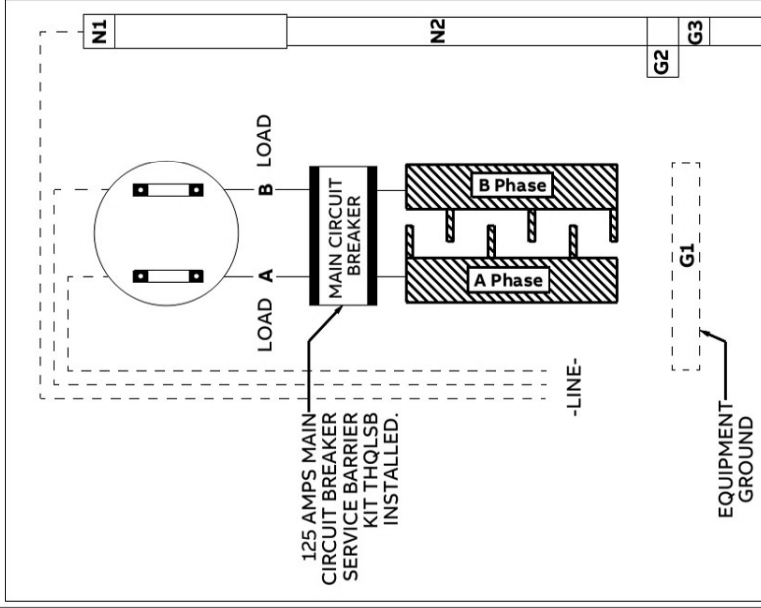




ReliaHome™
Meter Combo

ENCLOSED
PANELBOARD
C3024



TSMBQ1212CSCU_WD Rev. A [Field Installed Accessory]

SUITABLE ONLY FOR USE AS SERVICE EQUIPMENT

MAXIMUM CONTINUOUS LOAD ON BRANCH CIRCUIT NOT TO EXCEED 80 PERCENT OF THEIR RATING.

ADDITIONAL/REPLACEMENT DEVICE SHALL BE OF SAME DESIGNATION AND OF EQUAL OR GREATER INTERRUPTING RATING.

BRANCH BREAKERS
90 AMP MAX USING CU CABLE
70 AMP MAX USING AL CABLE

DANGER
HAZARD OF ELECTRICAL SHOCK OR BURN.
TURN OFF POWER BEFORE WORKING INSIDE THIS EQUIPMENT.

CAT NO.: TSMBQ1212CSCU MOD 1
SURFACE MOUNT

125 AMPS MAX 120/240V AC 208Y/120V AC
3 WIRE, 1 PHASE
TYPE 3R ENCLOSURE
METER SOCKET RATING: 125 AMPS CONTINUOUS

MAIN BREAKER: THHQL21125SB

USE ONLY ABB TYPE BREAKERS:

THQL, THHQL, THQLT, THQLQ, THQL-GFCI, THHQL-GFCI & THQL-AF OR THHQL-AF BREAKERS.

OVER CURRENT PROTECTION

IF BREAKER TRIPS, HANDLE WILL BE IN INTERMEDIATE POSITION. TO RESTORE SERVICE; 1. MOVE HANDLE TO "OFF" POSITION. 2. THEN TO "ON" POSITION.

USE COPPER OR ALUMINIUM

USE ONLY 60 DEG. C (140 DEG. F) OR 75 DEG. C (167 DEG. F) CONDUCTORS ON ALL FIELD INSTALLED LINE, LOAD AND NEUTRAL TERMINATIONS.

WIRE RANGE TABLE

CONNECTOR	COPPER		ALUMINIUM	
	SOLID	STRD	SOLID	STRD
LINE - METER SOCKET		1/0-125A to 350MCM		1/0-125A to 350MCM
LOAD A & B		1-300		2/0-300
NEUTRAL - N1		6-350		6-350
NEUTRAL - N2		14-4		12-4
GROUND - G1		14-4		14-4
GROUND - G2		2/0-6		2/0-6
Ground - G3		2/0-6		2/0-6

LUG TIGHTENING TORQUE (LB-IN)

AWG WIRE	SLOTTED SCREW TORQUE (LB-IN)	INTERNAL HEX TORQUE (LB-IN)
14 - 10	32 - 35	HEX SIZE
8	36 - 40	3/16 ACROSS FLATS
6 - 4	41 - 45	1/4 ACROSS FLATS
3 - 2/0	45 - 50	5/16 ACROSS FLATS

ACCESSORIES

EQUIPMENT GROUND KITS	TGK12
FRONT FILLER PLATE	1/2" Width -TFH,1" width - TQLFP1
SERVICE BARRIER	THQLSB

WARNING: TO AVOID ACCIDENTAL CONTACT WITH LIVE PARTS, CLOSE ALL OPENINGS WITH BREAKERS OR FILLER PLATES. THE CIRCUIT BREAKERS IN THIS BOX HAVE BEEN SELECTED TO PROTECT THE WIRING TO AVOID DAMAGE AND LOSS OF PROTECTION, DO NOT REPLACE WITH HIGHER AMPERE RATED BREAKERS. FOR REPAIRS OR ALTERATIONS, CALL AN ELECTRICAL CONTRACTOR OR ELECTRICIAN.

RAINPROOF CONDUIT HUBS

WHEN CABINET HAS PROVISIONS FOR A CONDUIT HUB, SELECT FROM THE CHART BELOW

CONDUIT DIAMETER INCHES	CAP	1	1 1/4	1 1/2	2	2 1/2	3	BUSHING PLATE
RAINTIGHT HUB CAT.NO.	TCCP	TC75	TC100	TC125	TC150	TC200	TC250	TC300
								TCCP15
								TCCP20

SHORT CIRCUIT CURRENT RATING OF THIS ENCLOSED PANELBOARD IS 22,000 RMS SYMMETRICAL AMPERES, 240 VOLTS AC MAX. THE BREAKER SHALL HAVE MINIMUM INTERRUPTING RATING OF 22,000 AMP RMS. ADDITIONAL OR REPLACEMENT CIRCUIT BREAKERS SHALL BE OF THE SAME MANUFACTURER AND TYPE DESIGNATION AND SHALL HAVE AN EQUAL OR GREATER SHORT CIRCUIT CURRENT RATING.
* WATT-HOUR METER NOT INCLUDED IN SHORT CIRCUIT RATING.

ABB Inc., Gregson Drive
Cary, NC U.S.A.

SAL508@

Country of Origin:
Mexico

10084267P31WL REV A

INSTRUCTION SHEET
1TQC183000Z2401

