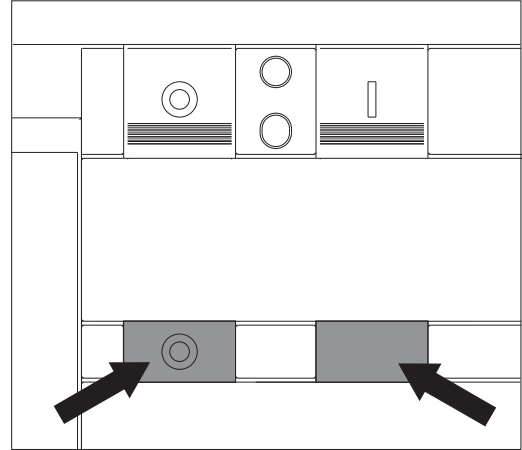


Sostituzione sensori di corrente E4-E6 III-IV-IVfs
 Replacement of current sensor E4-E6 III-IV-IVfs
 Ersatz Stromsensor E4-E6 III-IV-IVfs
 Remplacement capteur de courant E4-E6 III-IV-IVfs
 Reemplazo sensor de corriente E4-E6 III-IV-IVfs

	III	IV	IV fs
	6	7	8
	-	1	-
	-	-	1
(A)	6	7	7
(B)	6	7	8

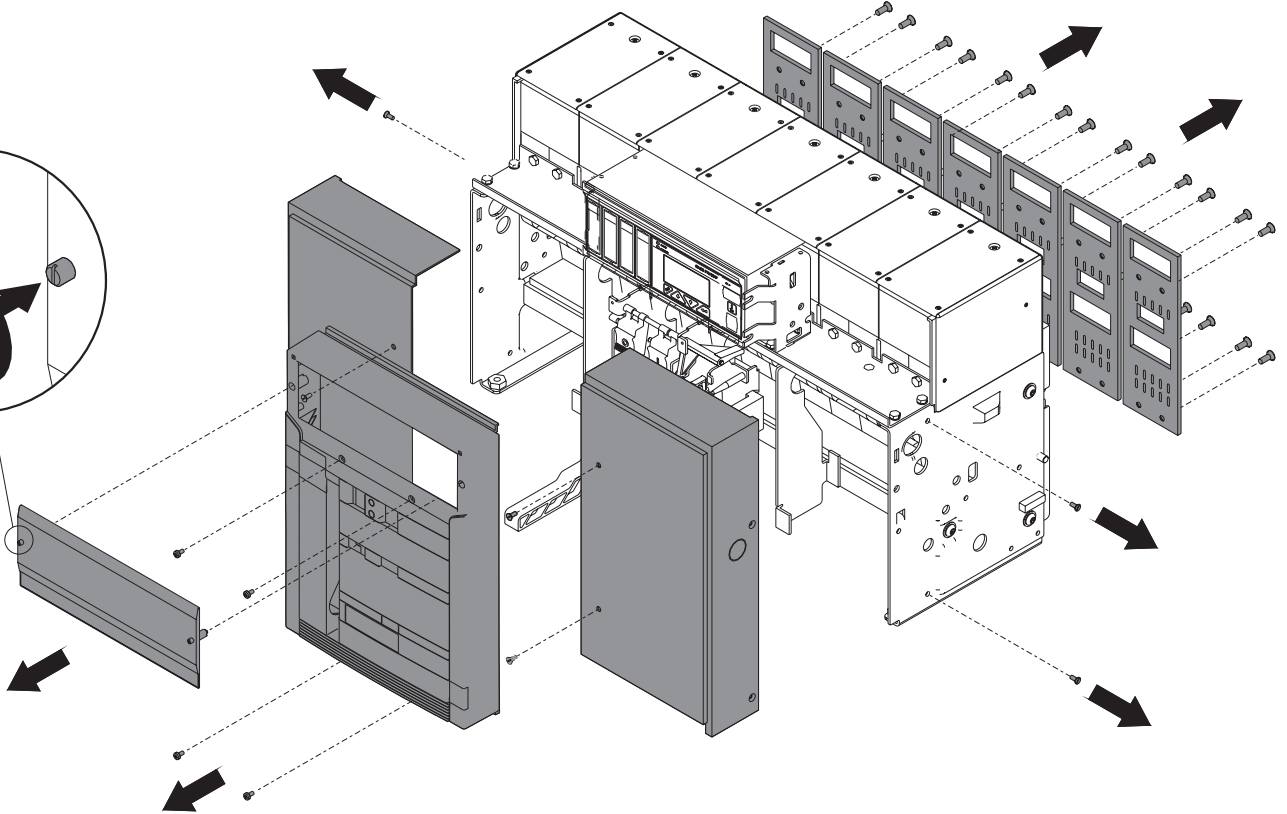
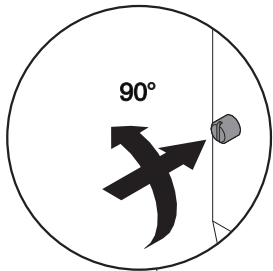
A

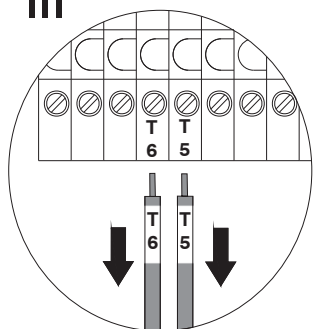
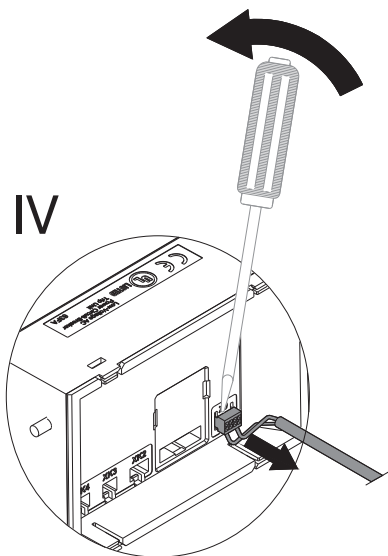


APERTO
 OPEN
 AUS-STELLUNG
 OUVERT
 ABIERTO

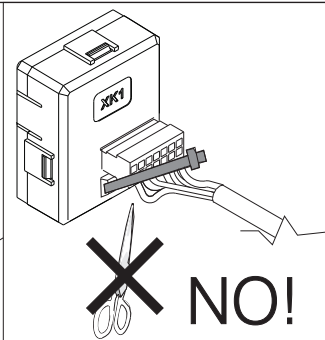
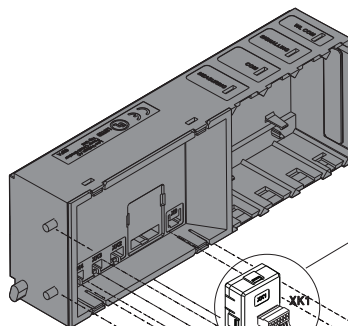
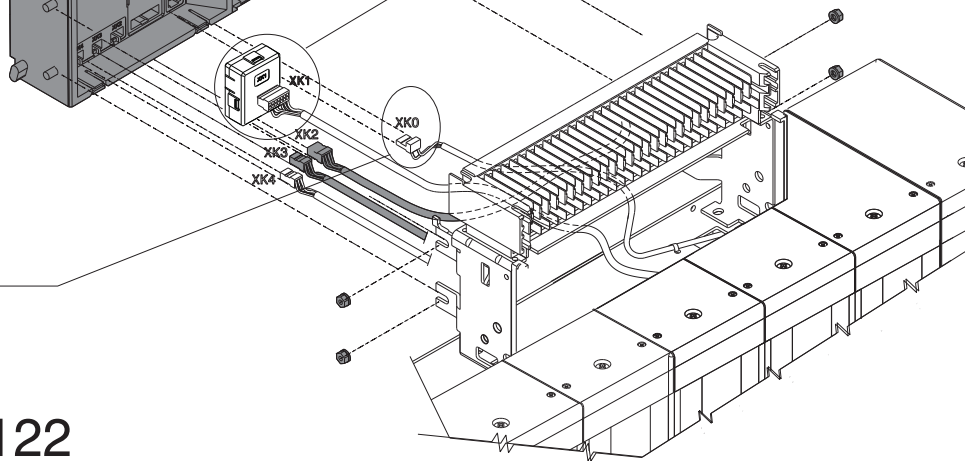
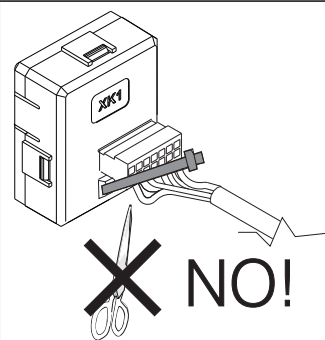
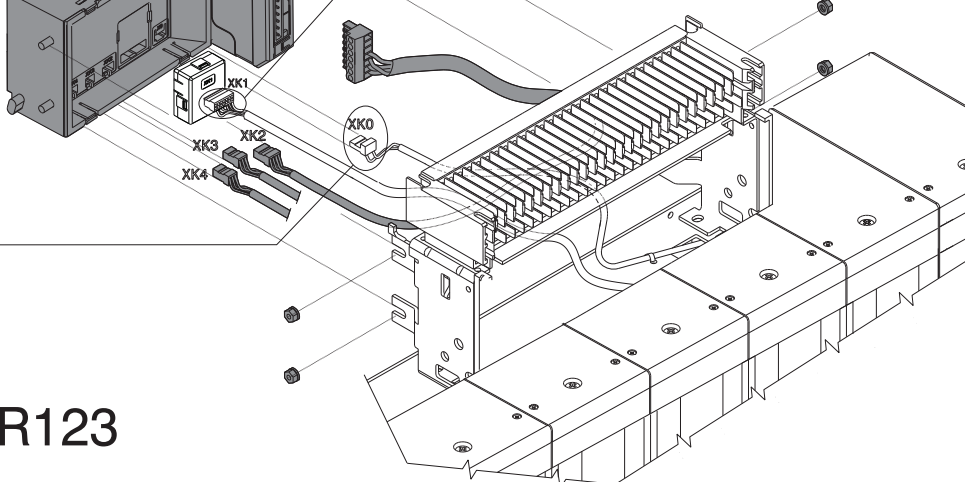
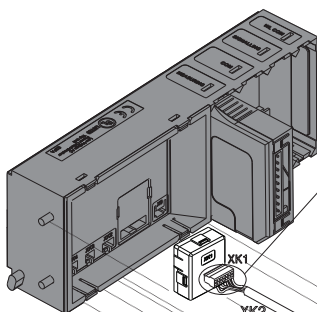
BIANCO
 WHITE
 WEISS
 BLANC
 BLANCO

B

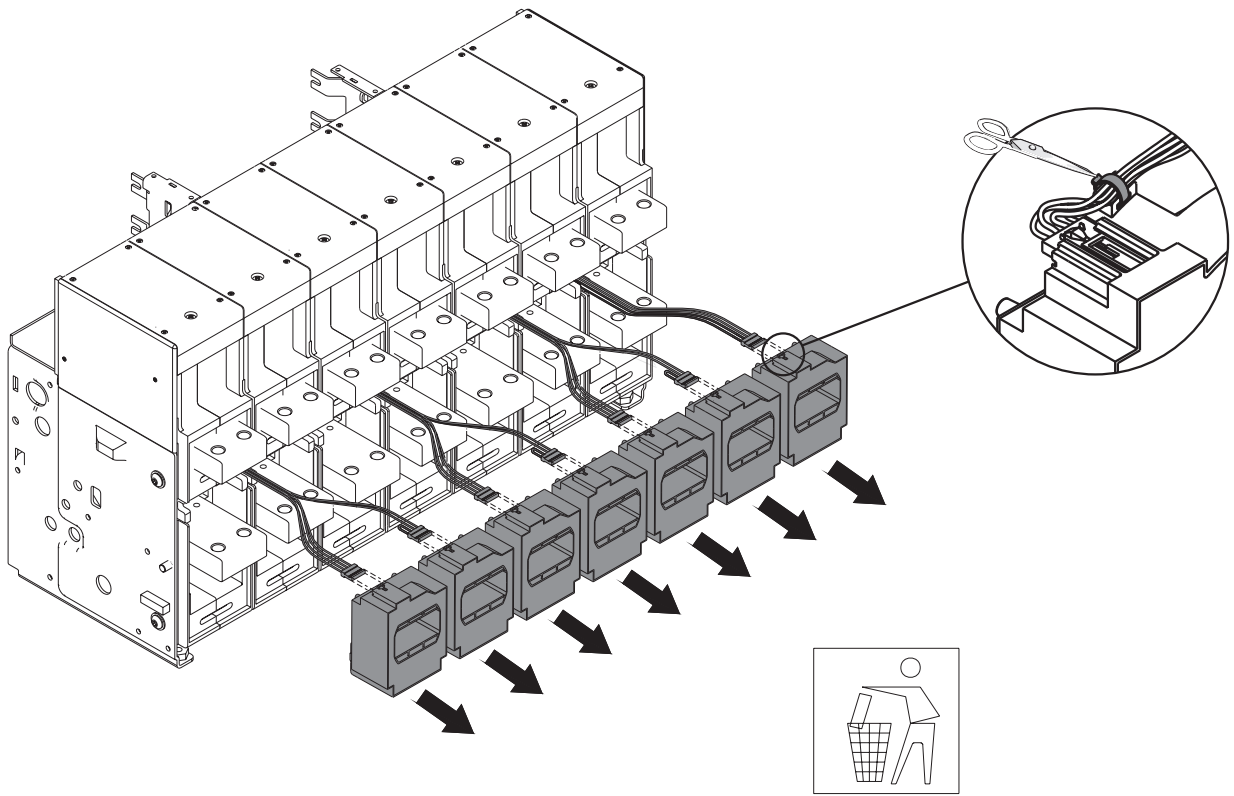


D**III****IV**

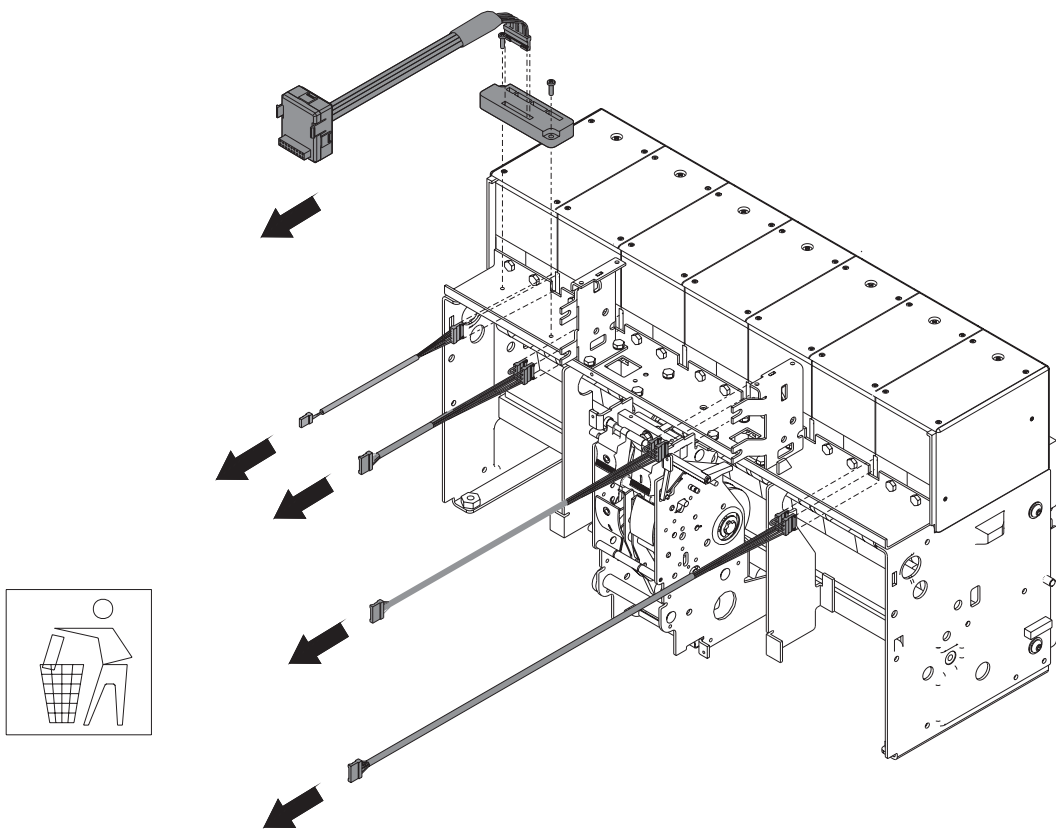
Solo per estrarre
 Only to remove
 Nur zum Ausbauen
 Comment retirer un connecteur
 Sólo en caso de extracción

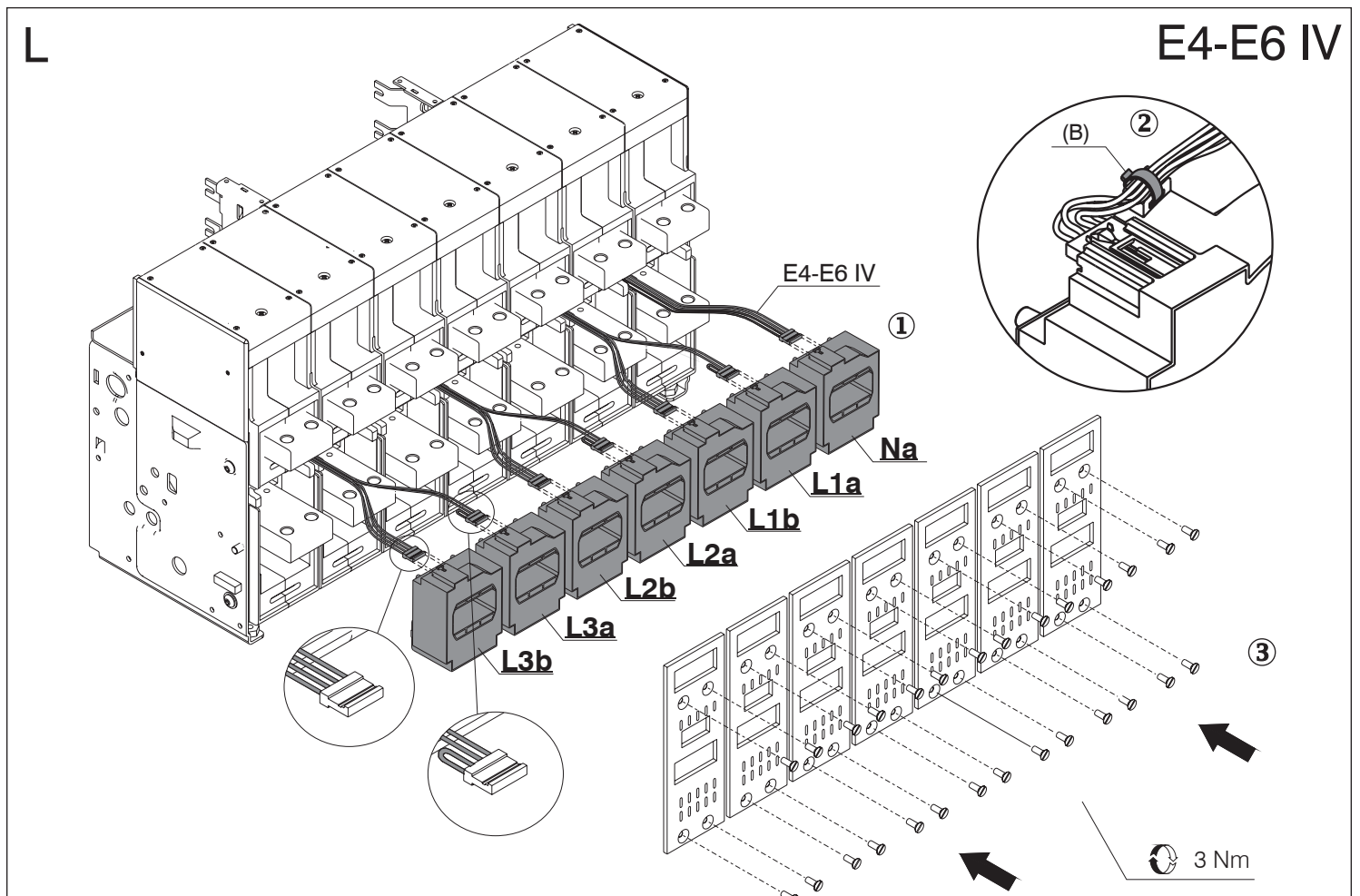
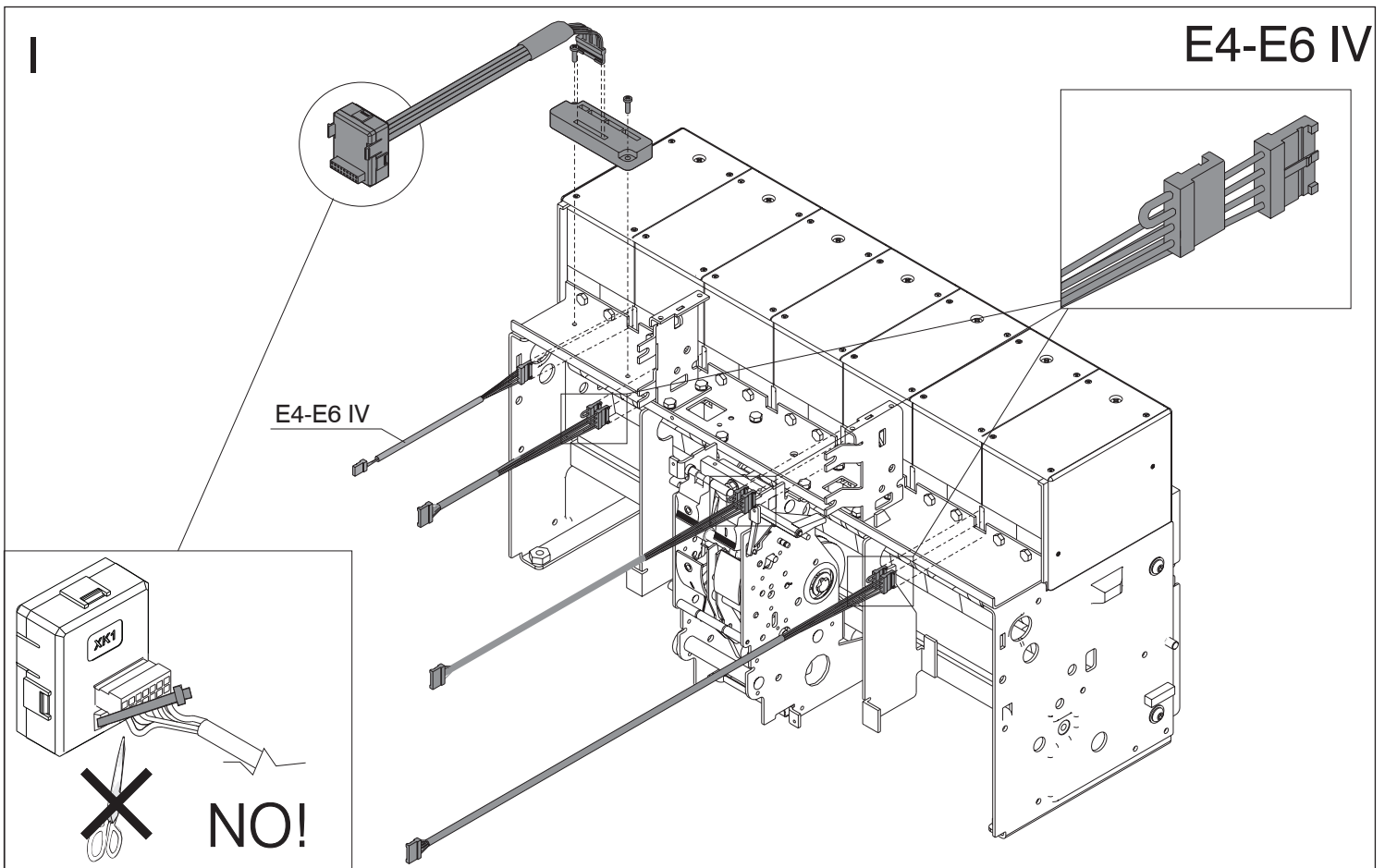
E**PR122****F****PR123**

G



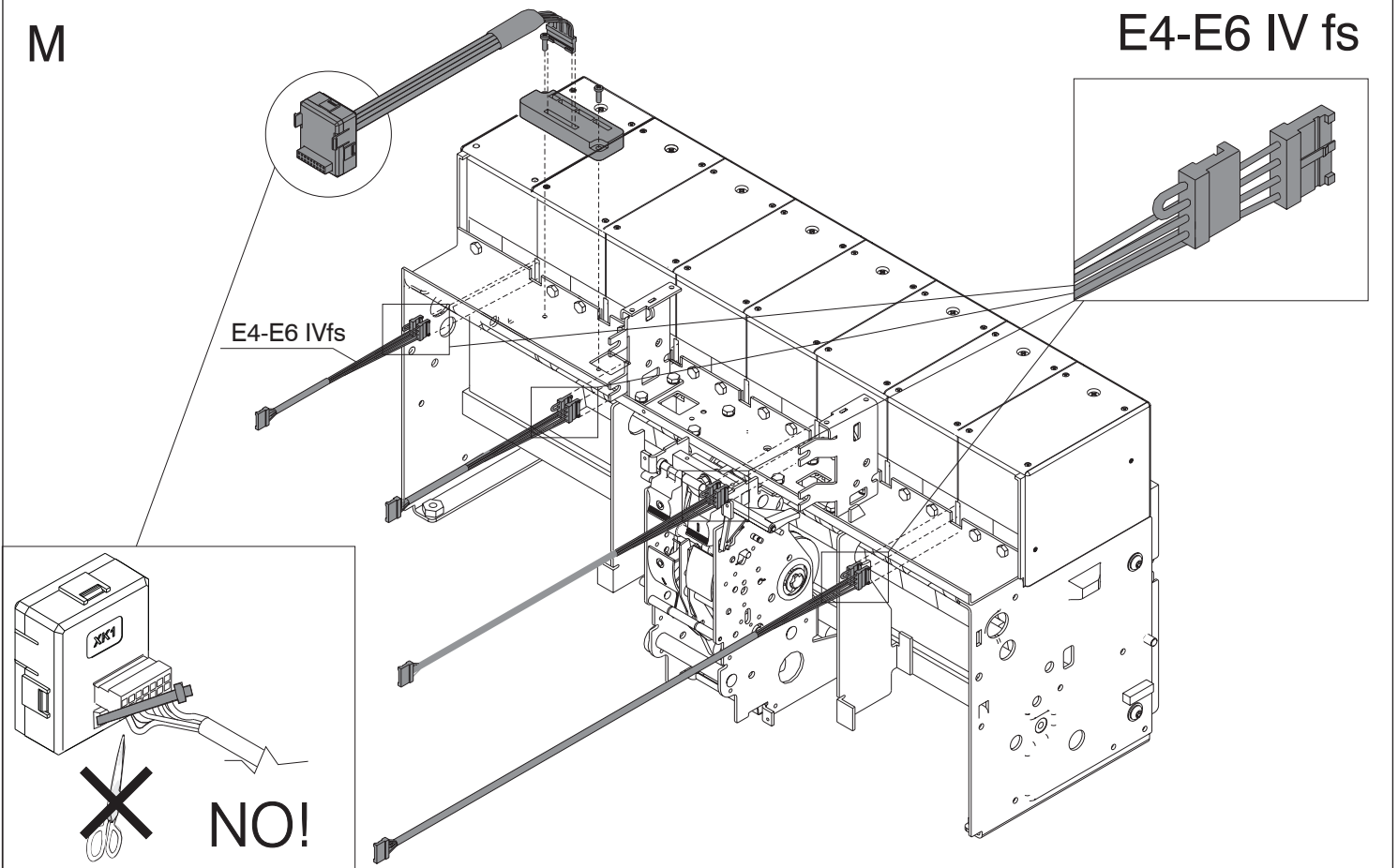
H





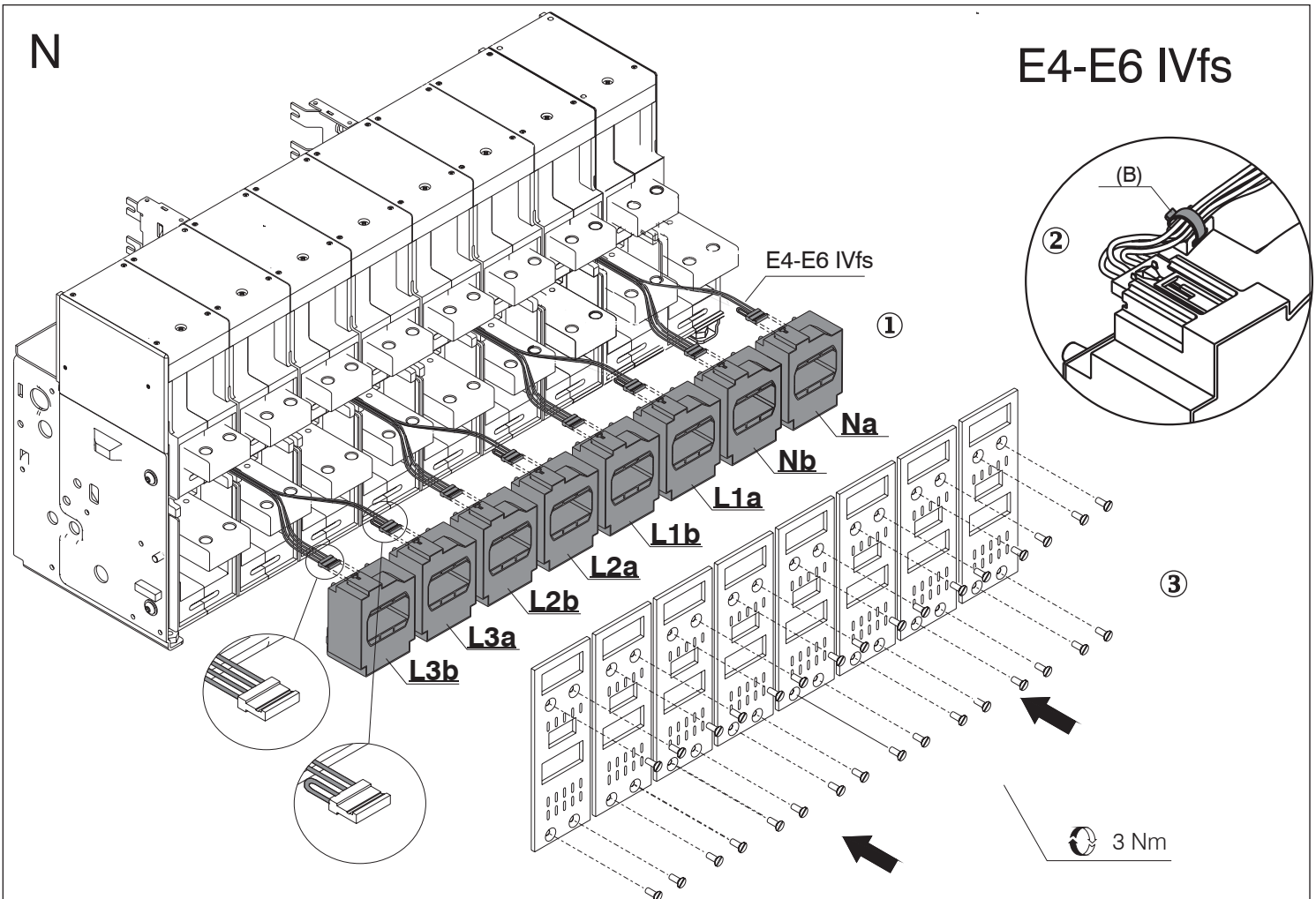
M

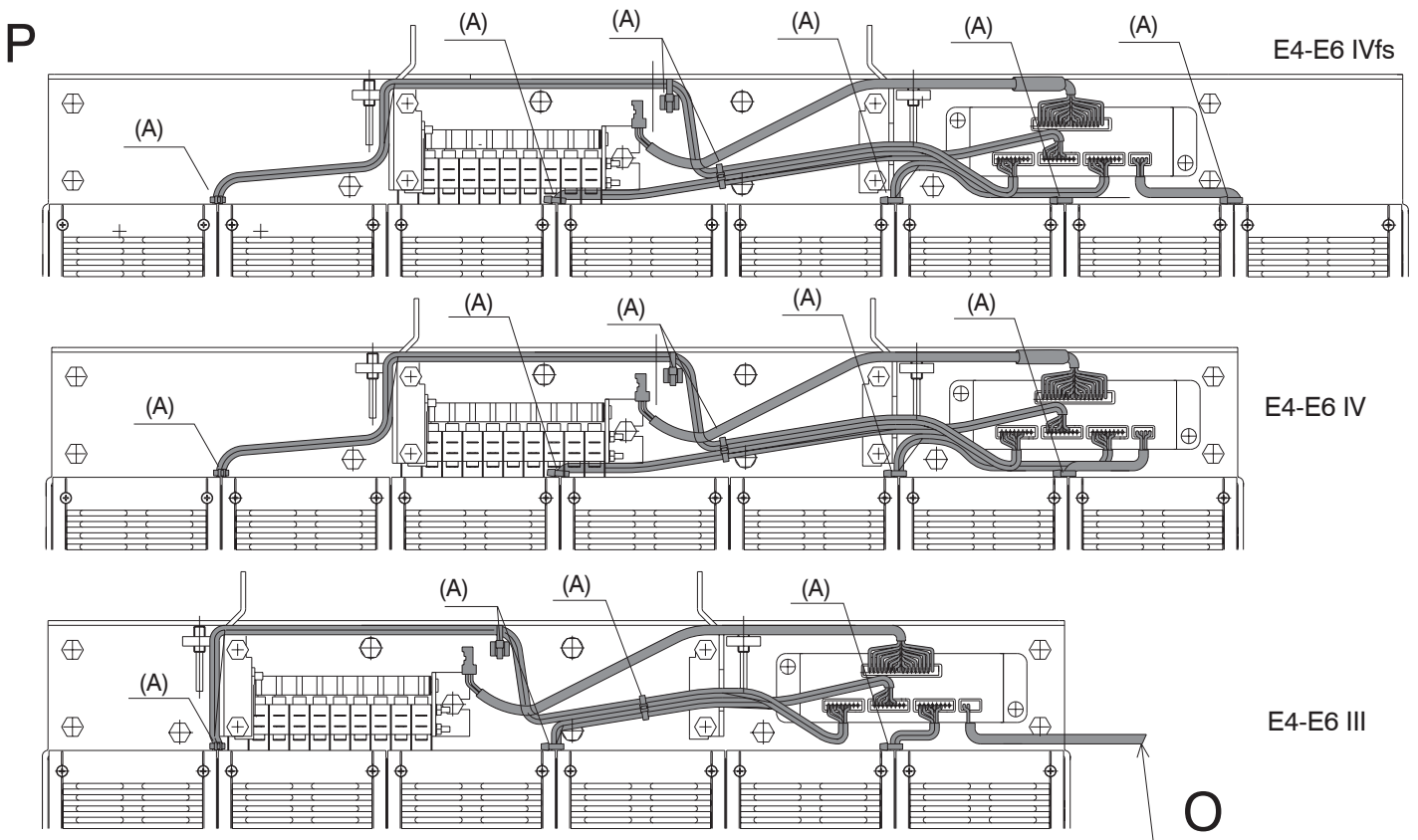
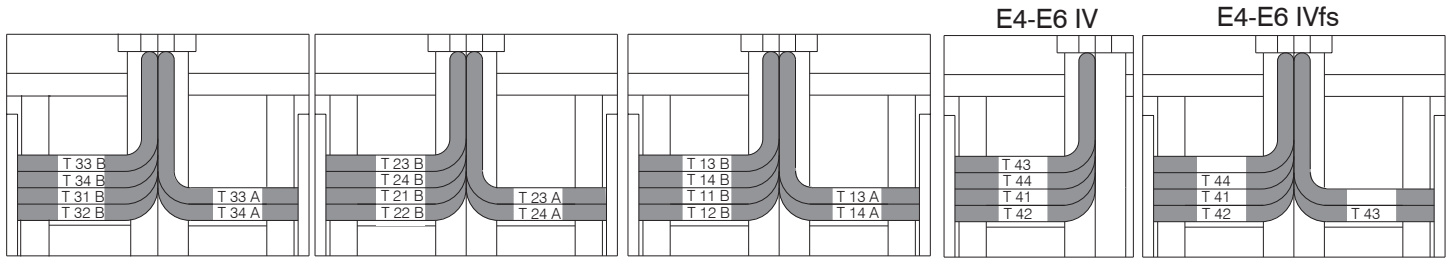
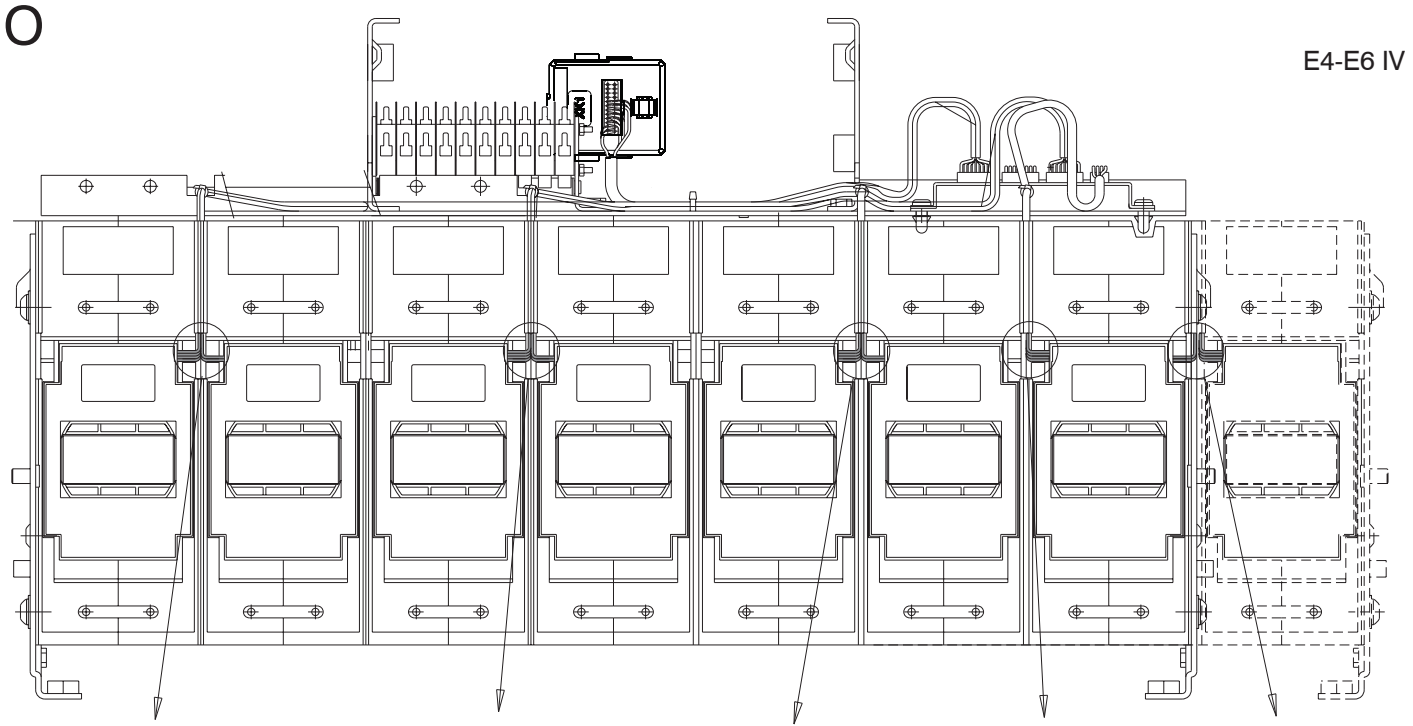
E4-E6 IV fs

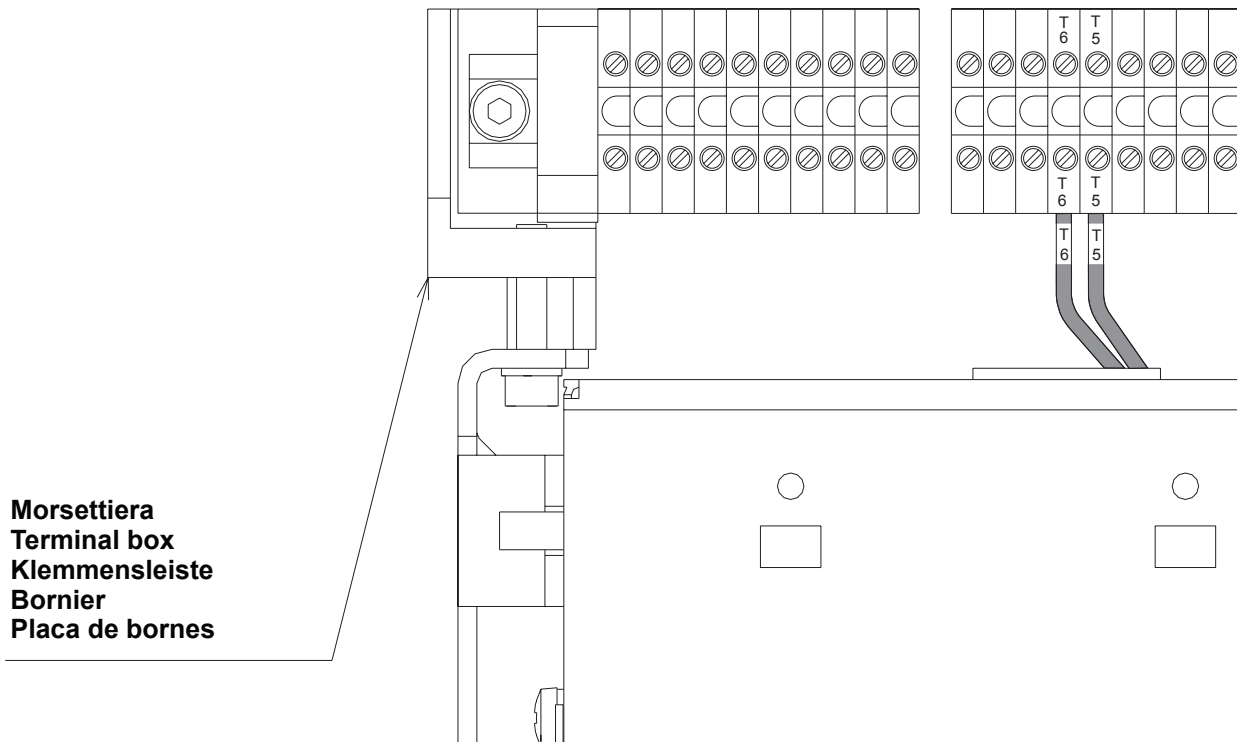


N

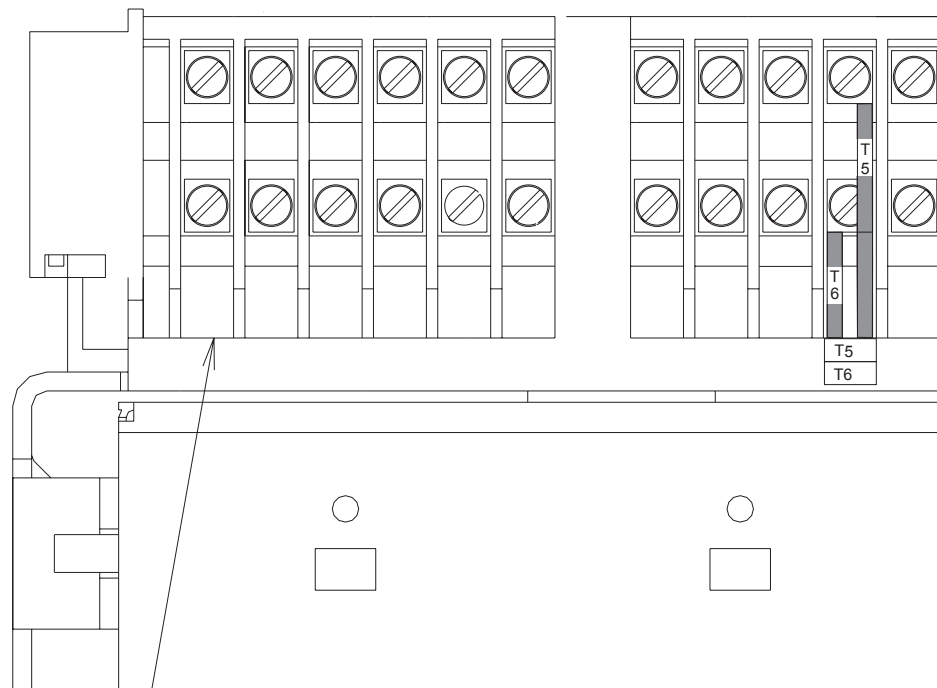
E4-E6 IVfs







Morsettiera
Terminal box
Klemmensleiste
Bornier
Placa de bornes



Contatti striscianti parte mobile
Moving part sliding contacts
Gleitkontakte bewegliches Teil
Frotteurs partie mobile
Contactos deslizantes parte móvil

R

- Procedere con l'installazione dello sganciatore consultando le istruzioni di installazione ed esercizio 1SDH000460R0001 paragrafo 12.6 e 12.7 per sganciatori PR121/P e 1SDH000460R0101 paragrafo 2.12 e 2.13 per sganciatori PR122/P e PR123/P. Le istruzioni sono disponibili sul sito <http://www.abb.com/abblibrary/DownloadCenter/>
- Proceed with the installation of the release, referring to the installation and operation instructions 1SDH000460R0002 paragraphs 12.6 and 12.7 for releases PR121/P and 1SDH000460R0102 paragraphs 2.12 and 2.13 for releases PR122/P and PR123/P. The instructions are available on the web site <http://www.abb.com/abblibrary/DownloadCenter/>
- Die Installation des Auslösers vornehmen und dabei die Installations- und Betriebsanleitungen 1SDH000460R0003 Abschnitt 12.6 und 12.7 für Auslöser PR121/P und 1SDH000460R0103 Abschnitt 2.12 und 2.13 für Auslöser PR122/P und PR123/P beachten. Die Anweisungen stehen zur Verfügung unter <http://www.abb.com/abblibrary/DownloadCenter/>
- Poursuivre l'installation du déclencheur en consultant les instructions d'installation et de service 1SDH000460R0004 paragraphe 12.6 et 12.7 (déclencheurs PR121/P) et 1SDH000460R0104 paragraphe 2.12 et 2.13 (déclencheurs PR122/P et PR123/P). Les instructions sont disponibles sur le site <http://www.abb.com/abblibrary/DownloadCenter/>
- Efectuar la instalación del relé consultando las instrucciones de instalación y servicio 1SDH000460R0005 apartados 12.6 y 12.7 para relés PR121/P y 1SDH000460R0105 apartados 2.12 y 2.13 para relés PR122/P y PR123/P. Las instrucciones están disponibles en la página <http://www.abb.com/abblibrary/DownloadCenter/>

ABB SACE S.p.A.

Via Baioni, 35
24123 Bergamo Italy
Tel.: +39 035 395.111 - Telefax: +39 035 395.306-433