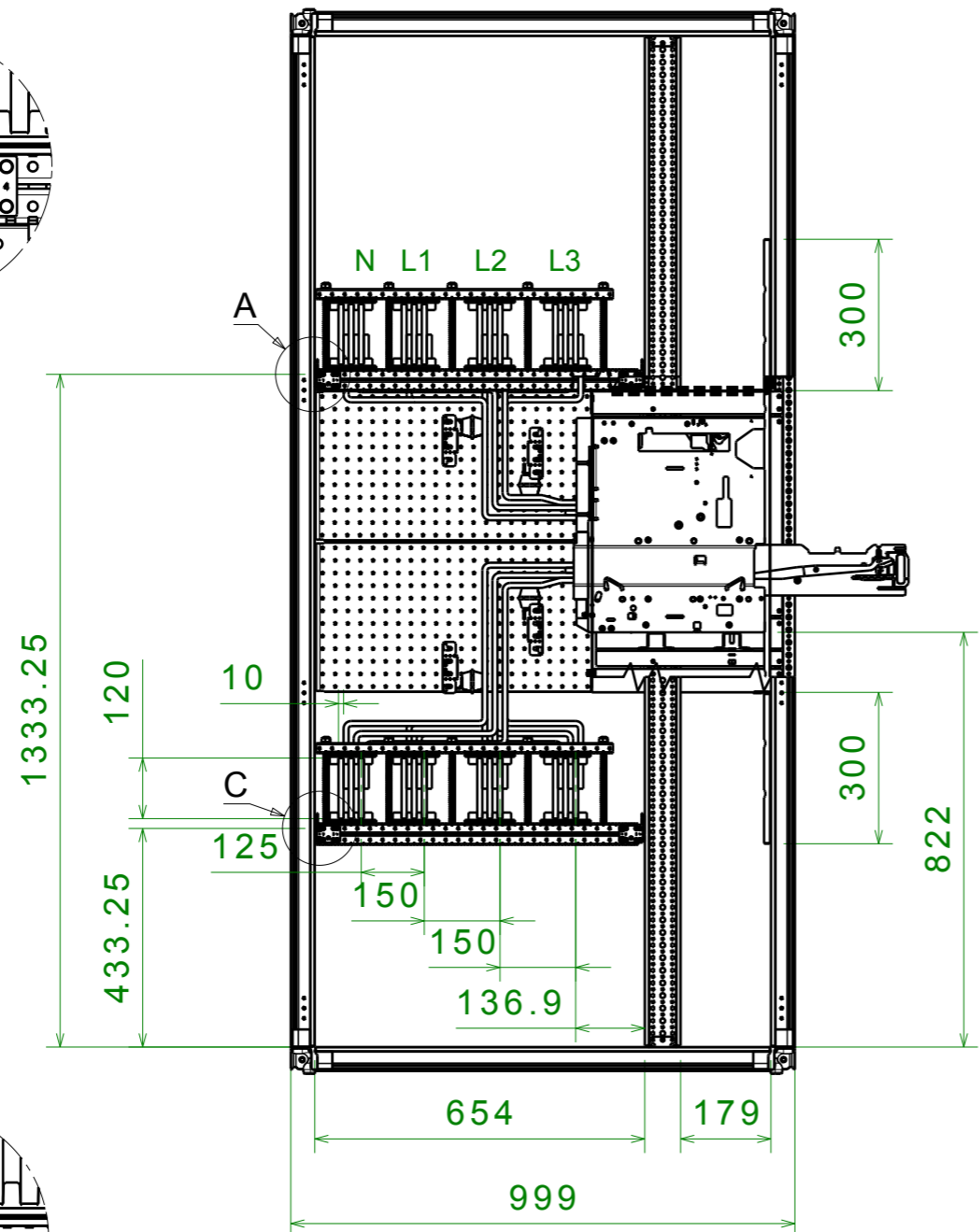
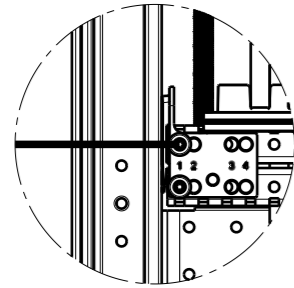
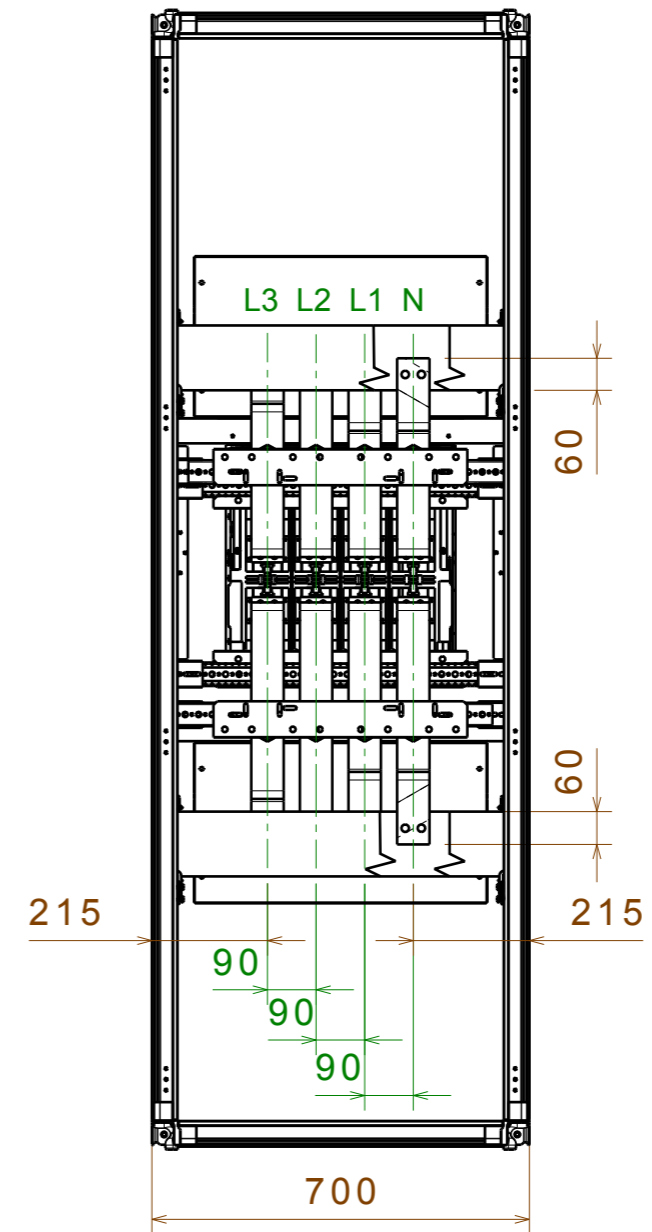
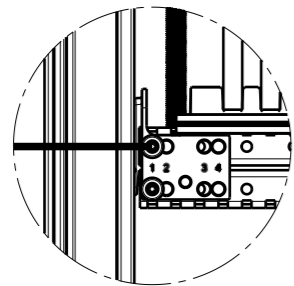


ASSEMBLY DRAWING E2.2 2000A W MAIN BUSBARS 3x120x10xP

Detail A



Detail C



CONNECTION BUSBARS 3x60x10xP

AGG. DI SEGNO: SCALA SCALE : 1:14

DISEGNATORE DESIGNER :

APPROVAZIONE APPROVAL :

DATA DATE : xx-xx-xx

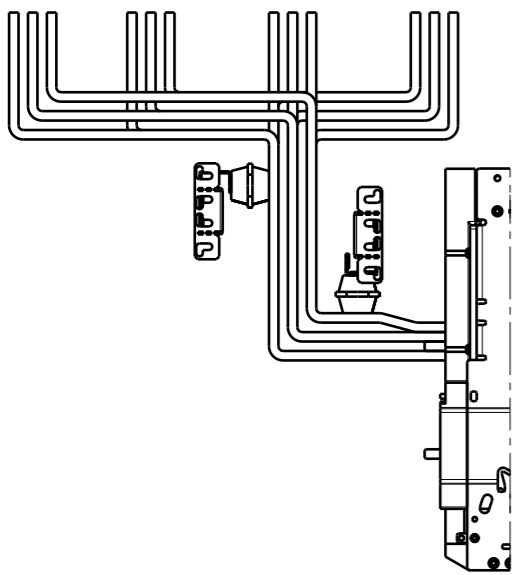
FORMATO A3 Formed

N° PROGETTO PROJECT : XXX.XX

ABB ABB SACE ADB

DENOMINAZIONE/NAME: E2.2 2000A W CONNECTION BUSBARS 3x60x10xP

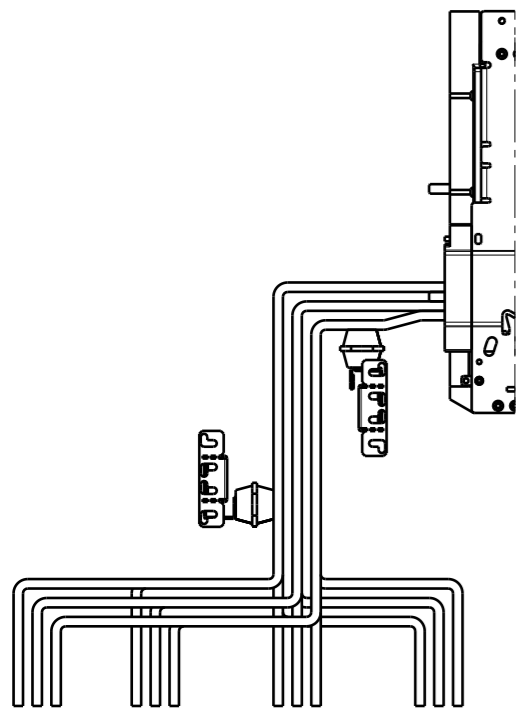
DISEGNO N°/DRAWING N°
8 6 3 7 1 1



MAIN BUSBARS UP

	B	E
L3.1	368	185
L3.2	348	165
L3.3	338	155
L2.1	368	185
L2.2	348	165
L2.3	338	155
L1.1	368	185
L1.2	348	165
L1.3	338	155
N.1	368	185
N.2	348	165
N.3	338	155

PHASE	POS	A	C	D	
L3	1	L3.1	196.65	94.25	160
	2	L3.2	176.65	114.25	160
	3	L3.3	156.65	134.25	160
L2	1	L2.1	196.65	-	-
	2	L2.2	176.65	-	-
	3	L2.3	156.65	-	-
L1	1	L1.1	196.65	134.25	160
	2	L1.2	176.65	114.25	160
	3	L1.3	156.65	94.25	160
N	1	N.1	196.65	134.25	285
	2	N.2	176.65	114.25	285
	3	N.3	156.65	94.25	285

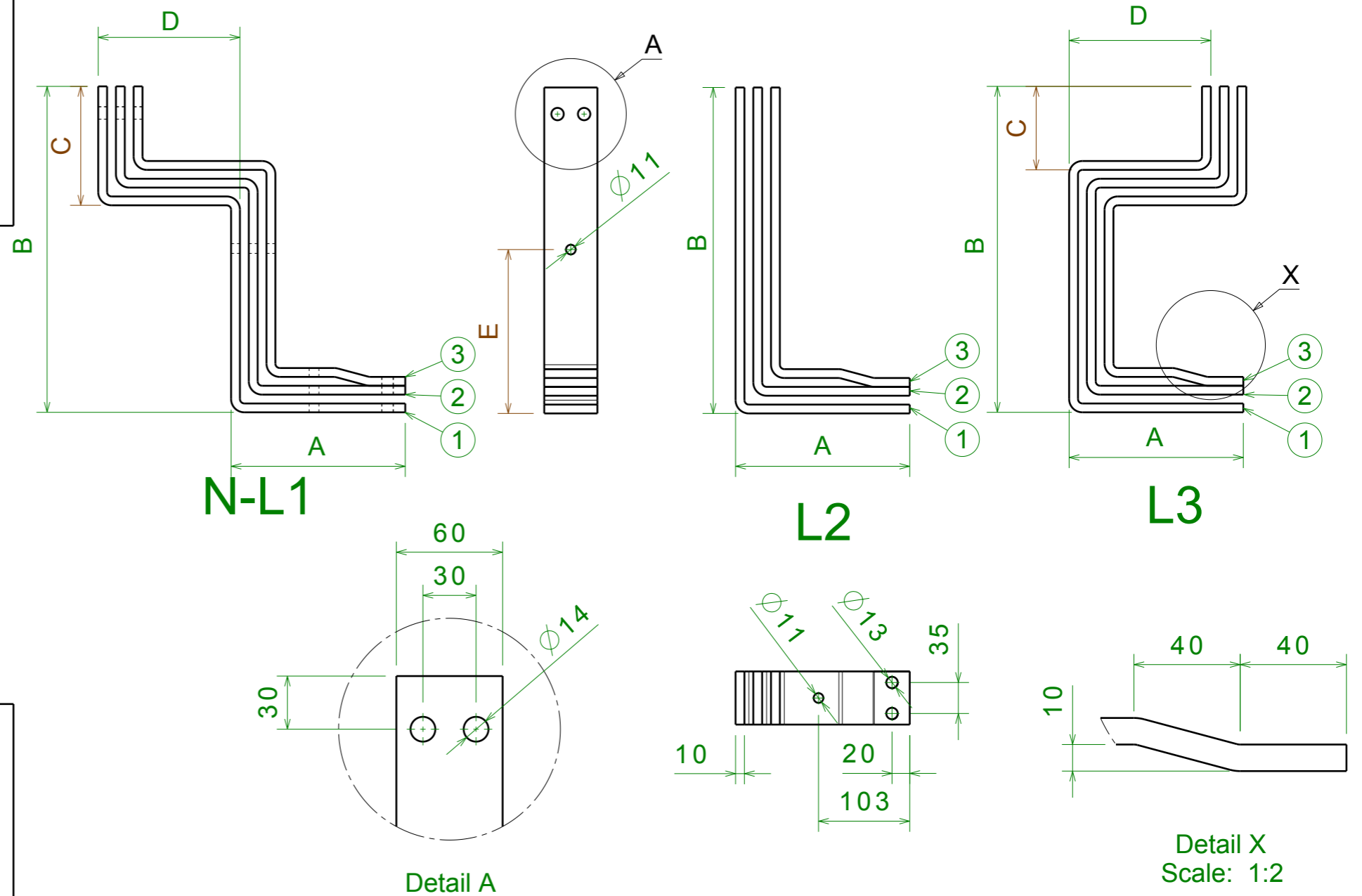


MAIN BUSBARS DOWN

	B	E
L3.1	468	235
L3.2	448	215
L3.3	438	205
L2.1	468	235
L2.2	448	215
L2.3	438	205
L1.1	468	235
L1.2	448	215
L1.3	438	205
N.1	468	235
N.2	448	215
N.3	438	205

CONNECTIONS FOR E2.2 WITHDRAWABLE 2000A

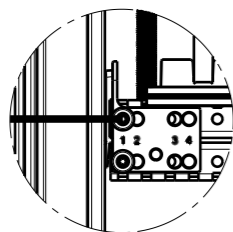
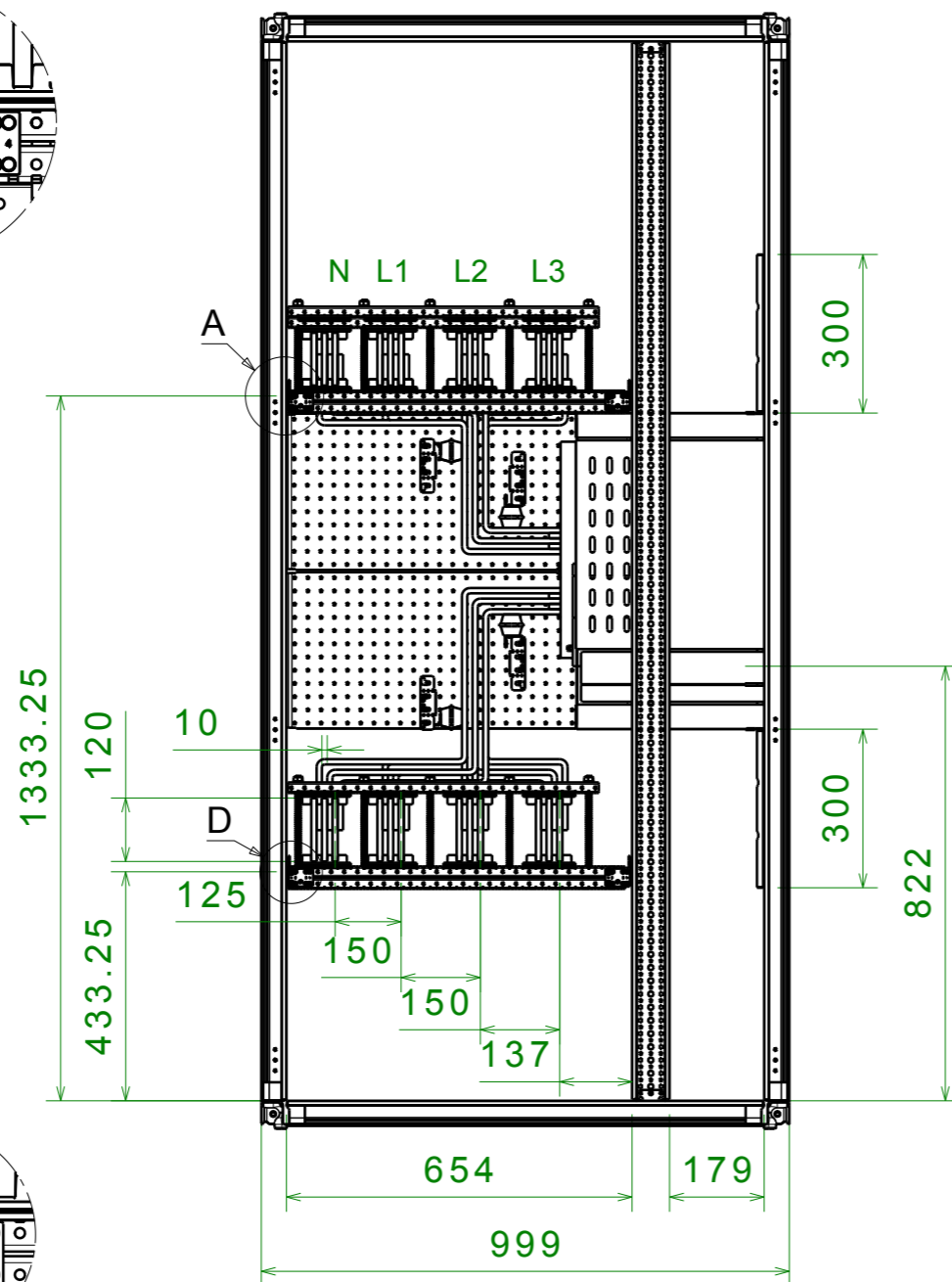
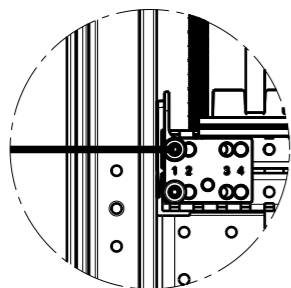
SPEP P = 900mm
 BUSBARS HOLDER PBHB3121 (100mm)
 MAIN BUSBAR IP40 / IP41 / IP65 : 4000A (3x120x10);



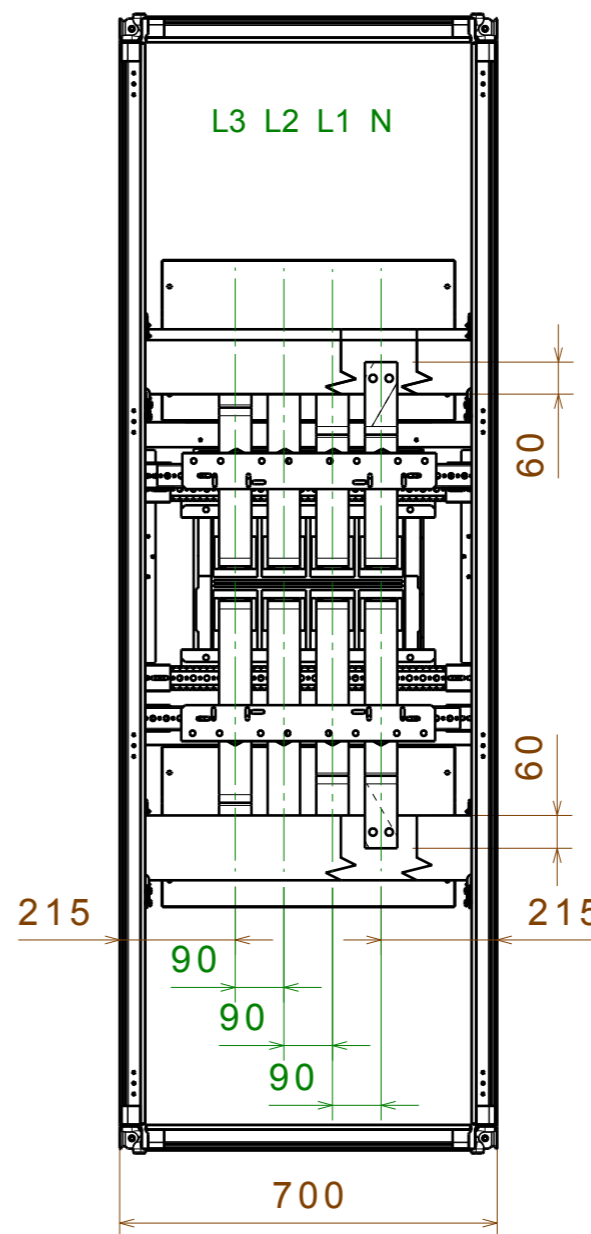
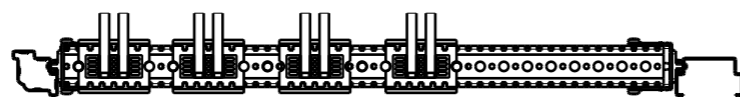
AGG. DI SEGNO	SCALA SCALE : 1:6	N° PROGETTO PROJECT : XXX.XX
DESIGNER	DISEGNATORE DESIGNER :	ABB SACE ADB
APPROVAZIONE APPROVAL	APPROVAZIONE APPROVAL :	DENOMINAZIONE/NAME : E2.2 2000A W CONNECTION BUSBARS 3x60x10xP
DATA DATE	DATA DATE : xx-xx-xx	DISEGNO N° /DRAWING N° : 8 6 3 7 0 6
FORMATO	Formato A3 Formed	

ASSEMBLY DRAWING E2.2 2500A W ALIM BUSBARS 3x120x10xP

Detail A

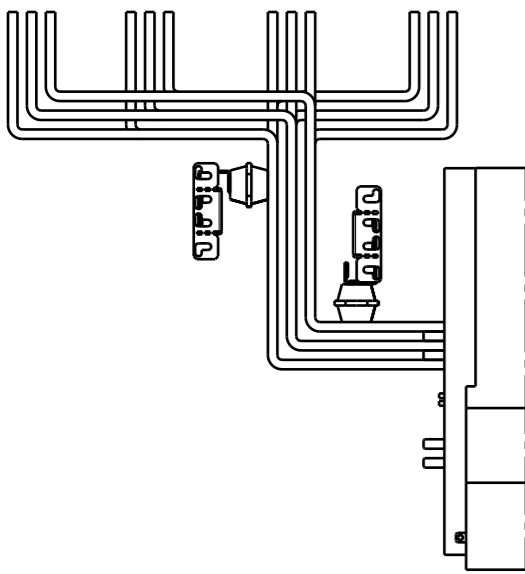


Detail D



CONNECTION BUSBARS 3x60x10xP

AGG. DI SEGNO	SCALA SCALE	: 1:14	N° PROGETTO : PROJECT	XXX.XX
MODIFICA	DISEGNATORE DESIGNER	:	ABB SACE ADB	
	APPROVAZIONE APPROVAL	:		
DATA	DATA DATE	: xx-xx-xx	DENOMINAZIONE/NAME: E2.2 2500A W CONNECTION BUSBARS 3x60x10xP	
		Formato A3 Formed	DISEGNO N° /DRAWING N° 8 6 3 7 2 1	



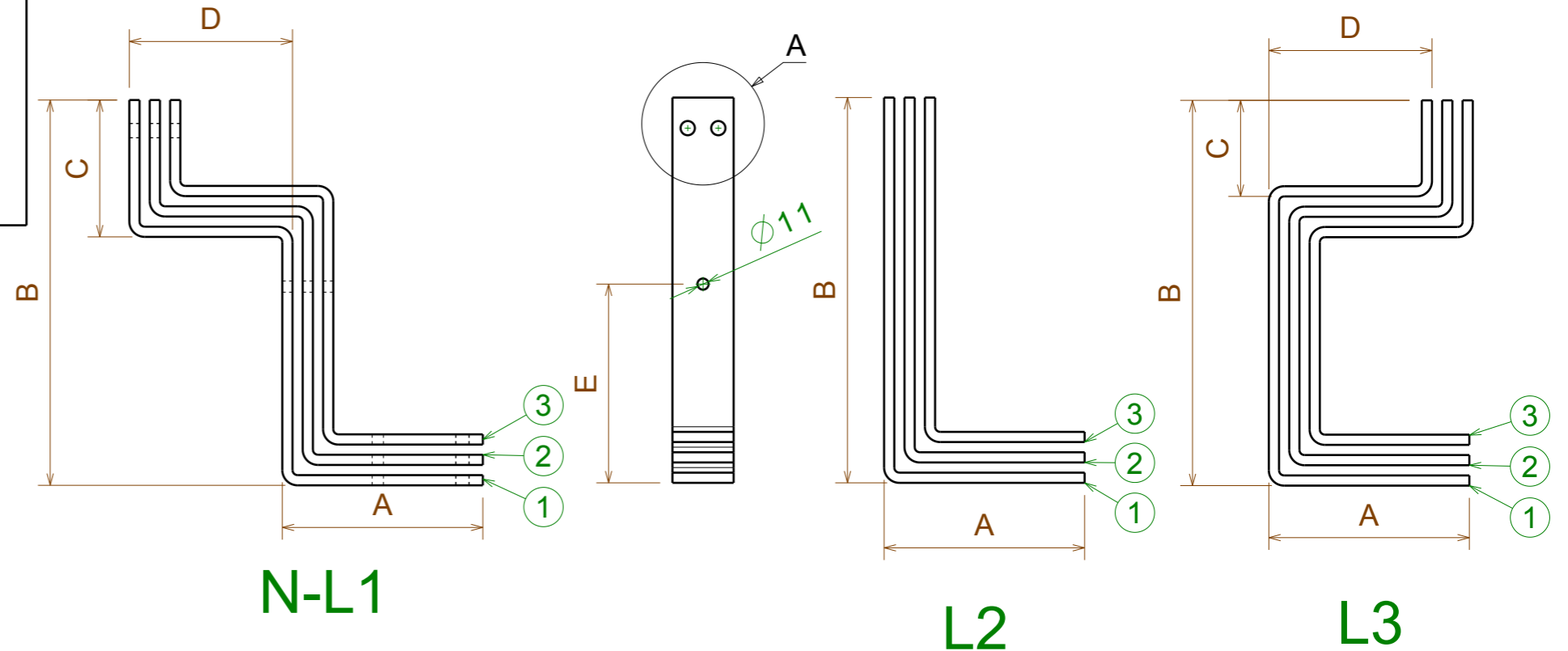
MAIN BUSBARS UP

	B	E
L3.1	378	195
L3.2	358	175
L3.3	338	155
L2.1	378	195
L2.2	358	175
L2.3	338	155
L1.1	378	195
L1.2	358	175
L1.3	338	155
N.1	378	195
N.2	358	175
N.3	338	155

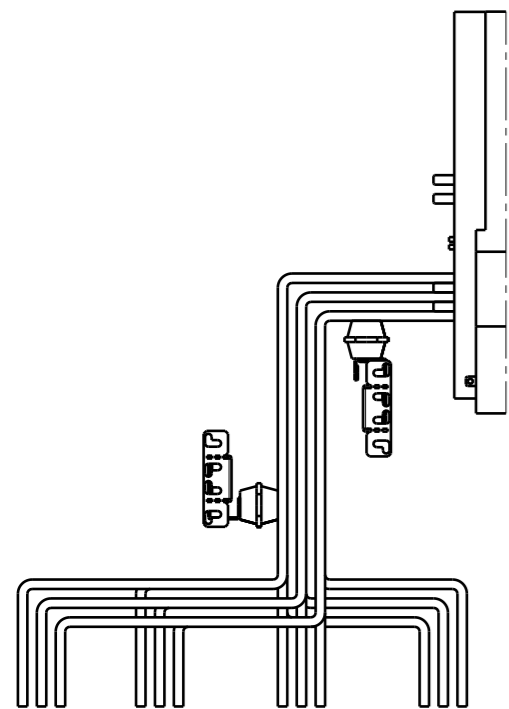
CONNECTIONS FOR E2.2 WITHDRAWABLE 2500A

I_{cw} > 36KA

SPEP P = 900mm
 BUSBARS HOLDER PBHB3121 (100mm)
 MAIN BUSBAR IP40 / IP41 / IP65 : 4000A (3x120x10);

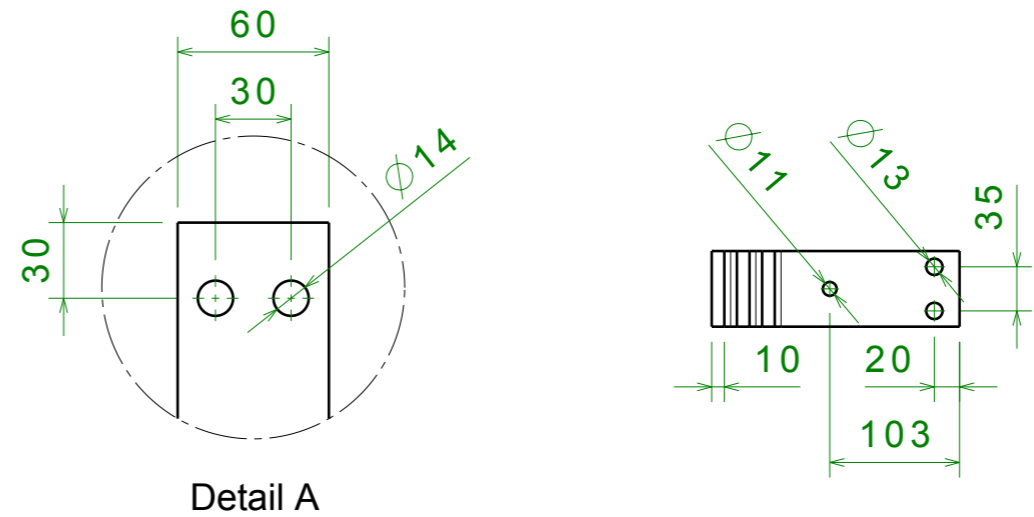


PHASE	POS	A	C	D	
L3	1	L3.1	196.65	94.25	160
	2	L3.2	176.65	114.25	160
	3	L3.3	156.65	134.25	160
L2	1	L2.1	196.65	-	-
	2	L2.2	176.65	-	-
	3	L2.3	156.65	-	-
L1	1	L1.1	196.65	134.25	160
	2	L1.2	176.65	114.25	160
	3	L1.3	156.65	94.25	160
N	1	N.1	196.65	134.25	285
	2	N.2	176.65	114.25	285
	3	N.3	156.65	94.25	285



MAIN BUSBARS DOWN

	B	E
L3.1	458	245
L3.2	438	225
L3.3	418	205
L2.1	458	245
L2.2	438	225
L2.3	418	205
L1.1	458	245
L1.2	438	225
L1.3	418	205
N.1	458	245
N.2	438	225
N.3	418	205

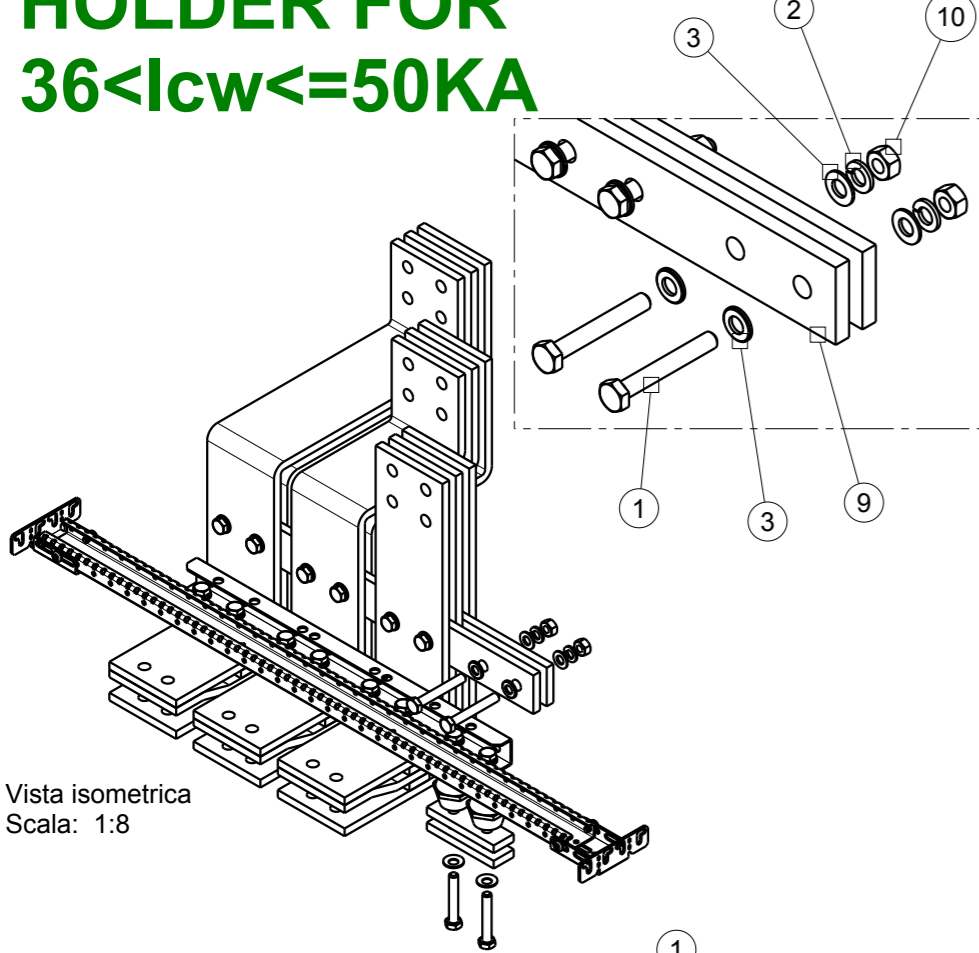


AGG. DI SEGNO	SCALA SCALE : 1:8	N° PROGETTO / PROJECT : XXX.XX
DISEGNATORE / DESIGNER	APPROVAZIONE / APPROVAL	ABB ABB SACE ADB
MODIFICA	DATA DATE : xx-xx-xx	DENOMINAZIONE/NAME : E2.2 2500A W CONNECTION BUSBARS 3x60x10xP
DATA	Formato A3 Formed	DISEGNO N° / DRAWING N° : 8 6 3 7 0 3

Questo disegno e' di esclusiva proprieta' di ABB SACE ADB. Ne e' vietata la riproduzione a termini di legge.

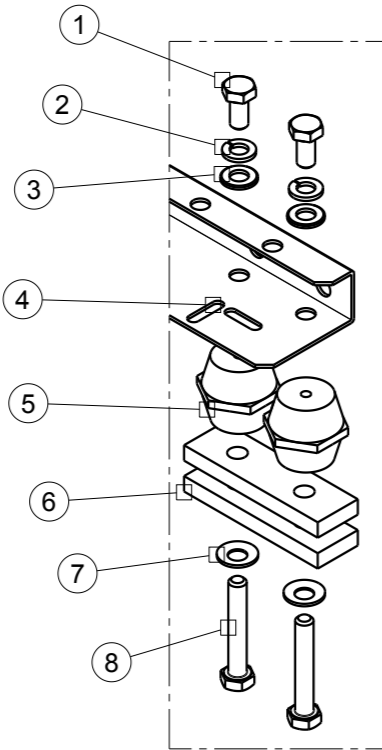
HOLDER FOR 36<I_{cw}<=50KA

Vista isometrica
Scala: 1:8



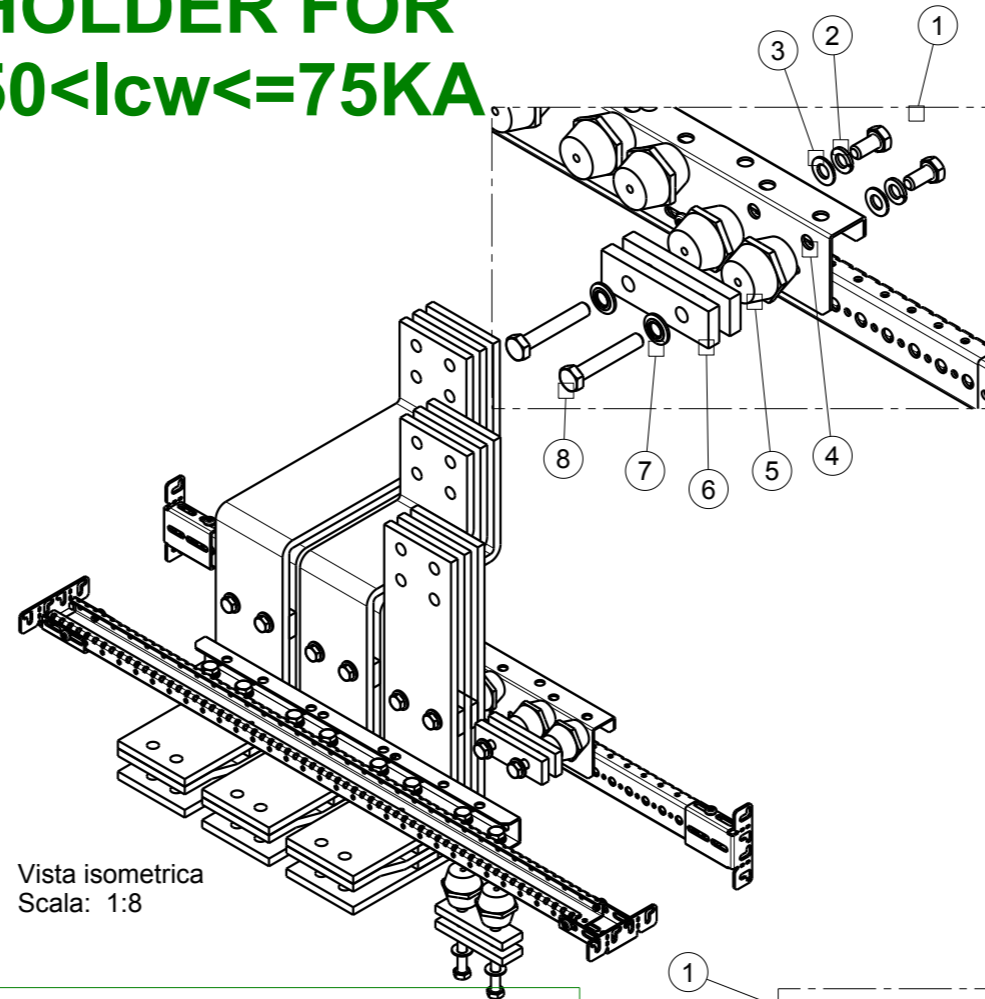
BOM 36<I_{cw}<=50KA

POS	DESCRIPTION
1	HEX CAP SCREWS M10x16 - 8.8 (VITE TESTA ESAGONALE M10x16 - 8.8)
2	FLAT WASHER M10 (RONDELLA PIANA M10)
3	SPRING LOCK WASHER M10 (ROSETTA ELASTICA GROWER M10)
4	BRACKET FOR INSULATOR (STAFFA ISOLATORI)
5	INSULATOR H40 M10 (ISOLATORI H40 M10)
6	CUPPER SPACER H10mm (SPESSORE IN RAME H10mm)
7	CONICAL SPRING WASHER M10 (ROSETTE ELASTICHE CONICHE M10)
8	HEX CAP SCREWS M10x__ - 8.8 (VITE TESTA ESAGONALE M10x__ - 8.8)
9	GPO3 PROFILE
10	NUT M10 - DADO M10



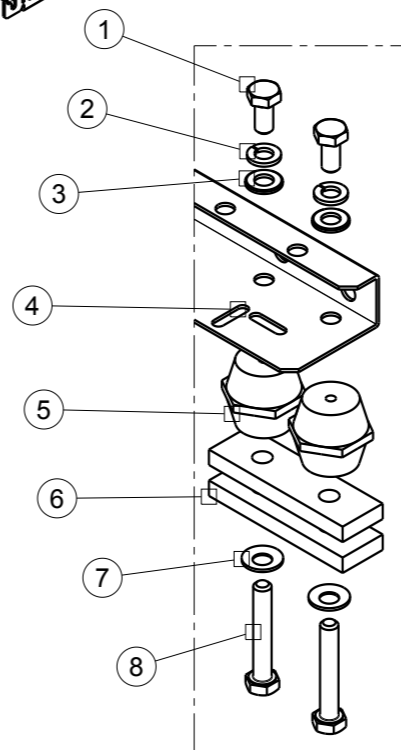
HOLDER FOR 50<I_{cw}<=75KA

Vista isometrica
Scala: 1:8



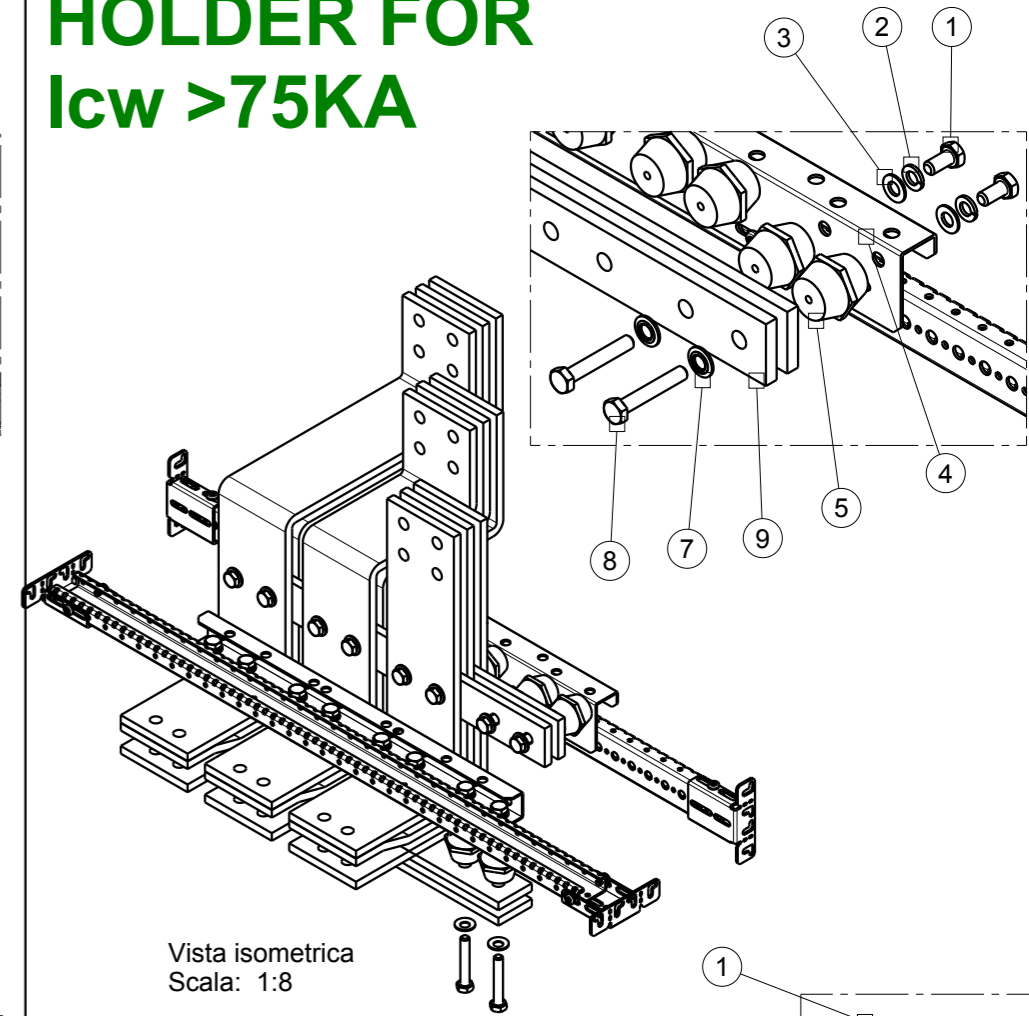
BOM 50<I_{cw}<=75KA

POS	DESCRIPTION
1	HEX CAP SCREWS M10x16 - 8.8 (VITE TESTA ESAGONALE M10x16 - 8.8)
2	FLAT WASHER M10 (RONDELLA PIANA M10)
3	SPRING LOCK WASHER M10 (ROSETTA ELASTICA GROWER M10)
4	BRACKET FOR INSULATOR (STAFFA ISOLATORI)
5	INSULATOR H40 M10 (ISOLATORI H40 M10)
6	CUPPER SPACER H10mm (SPESSORE IN RAME H10mm)
7	CONICAL SPRING WASHER M10 (ROSETTE ELASTICHE CONICHE M10)
8	HEX CAP SCREWS M10x__ - 8.8 (VITE TESTA ESAGONALE M10x__ - 8.8)
9	GPO3 PROFILE



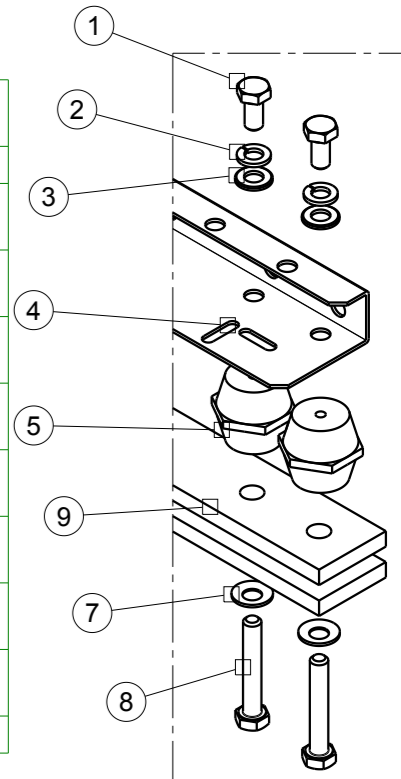
HOLDER FOR I_{cw} >75KA

Vista isometrica
Scala: 1:8



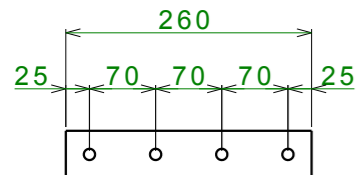
BOM I_{cw}>75KA

POS	DESCRIPTION
1	HEX CAP SCREWS M10x16 - 8.8 (VITE TESTA ESAGONALE M10x16 - 8.8)
2	FLAT WASHER M10 (RONDELLA PIANA M10)
3	SPRING LOCK WASHER M10 (ROSETTA ELASTICA GROWER M10)
4	BRACKET FOR INSULATOR (STAFFA ISOLATORI)
5	INSULATOR H40 M10 (ISOLATORI H40 M10)
6	CUPPER SPACER H10mm (SPESSORE IN RAME H10mm)
7	CONICAL SPRING WASHER M10 (ROSETTE ELASTICHE CONICHE M10)
8	HEX CAP SCREWS M10x__ - 8.8 (VITE TESTA ESAGONALE M10x__ - 8.8)
9	GPO3 PROFILE

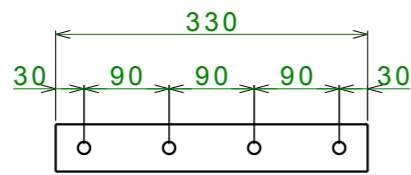


GPO3 PROFILE

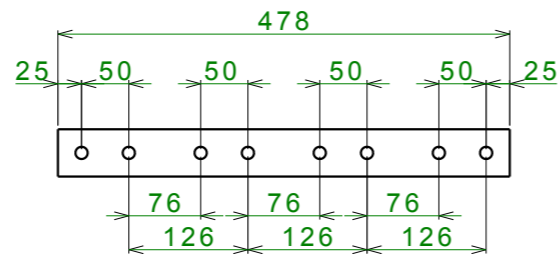
E1.2 4P



E2.2 4P



E4.2 4P



801

FIG.

DIMENSIONI/DIMENSION

PESO/WEIGHT

mm

UNITA' DI MISURA
UNITS OF MEASUREMENT

AGG. DI SEGNO DISTR. MOD.	SCALA SCALE	MAT. /MAT. :
VERSIONE VERSION	DISEGNATO DA DRAW BY	TRATT. /TREAT :
DATA DATE	APPROVAZIONE APPROVAL	PROGETTO N° : PROJECT N° : 142.00
		ABB ABB SACE ADB
		DESCRIZIONE/DESCRIPTION:
		DIVERSI TIPI DI ANCORAGGIO DIFFERENT TYPES OF SUPPORT
		Formato Format A3

DISEGNO N° /DRAWING N°

863877