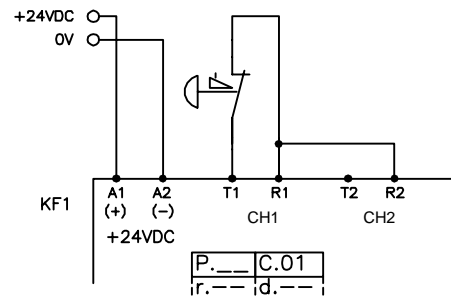
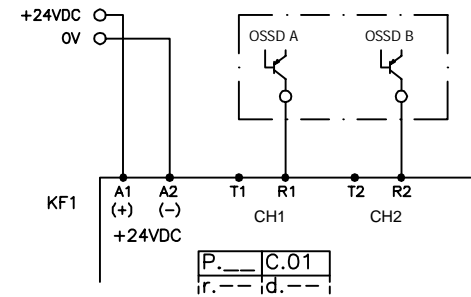


\* NOTE! Always use transient suppressors with inductive loads

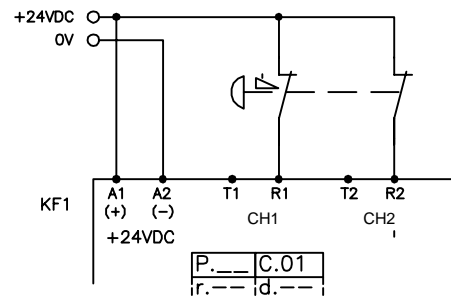
B) One signal from T1



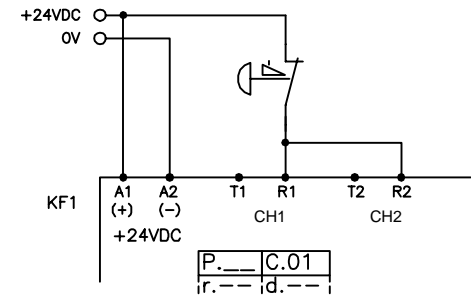
C) Two OSSD-signals



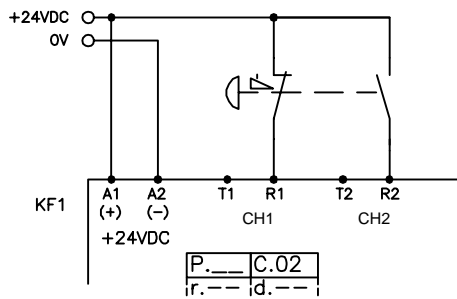
D) Two signals from +24 VDC



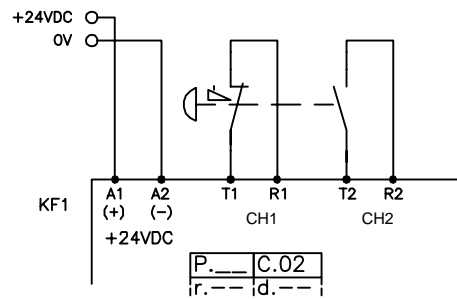
E) One signal from +24 VDC



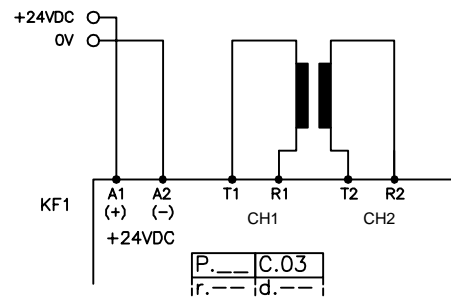
F) Antivalent signals from +24 VDC



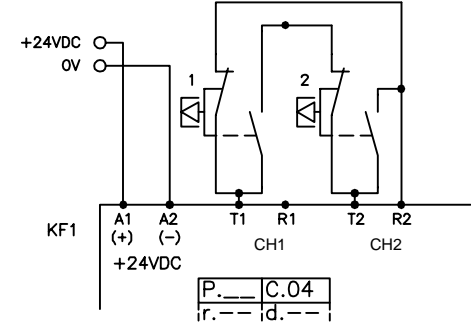
G) Antivalent signals from T1/T2



H) Mat/Bumper/Safety edge



I) Two-hand device



Anmärkning Remark

CONNECTION EXAMPLE USR22

**ABB** Jokab Safety

Konstr Design	Godk Appr	Datum Date	Blad Sheet
ABB		20160825	
Ritad Drawn	Sidor Pages	Ritn nr Drawing no	Forts Cont
ABB		2TLC010017T0001	