

Low voltage air circuit-breakers for direct current applications Emax DC



Technical specifications

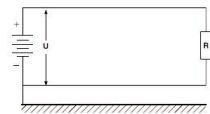
In order to select the right Emax DC it's necessary to fulfill the next technical specification topic list:

1. Rated uninterrupted current (at 40°C), I_u [A]
2. Rated ultimate short-circuit breaking capacity, I_{cu} [kA]
3. Rated service voltage, U_e [V DC]
4. Type of network (mark the selected net with an X)

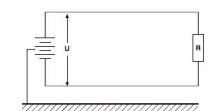
- Insulated net



- With negative polarity connected to Earth net



- With mid point connected to earth net



5. Fixed (F), Terminals Rear Vertical (VR)
- Withdrawable (W),
 - Terminals Rear Vertical (VR)
 - Terminals Rear Horizontal (HR)

6. Protection Trip Unit (mark the selected trip unit with an X)

- PR122/DC PR123/DC



PR122/DC - One polarity is protected (+): insulated network and network with one polarity earthed.

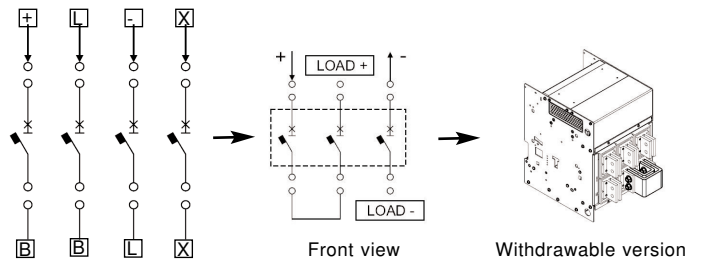
PR123/DC - Both polarities are protected (+ and -): all networks.

7. Auxiliary power supply (24V DC) planned to be installed by customer: Yes No

8. Connection configuration (front view).

Fulfill the blanks with the requested configuration.

Example:



B: Bridge

L: Load

+: Positive polarity

- : Negative polarity

X: If the pole is not used, just in 3 poles versions

9. IEC60947-2 Standard
- UL1066 Standard

Requirements

10. Application type

11. Customer name and/or Project ID