

# Hitachi Vegetation Manager

A closed-loop, data-driven system powering vegetation planning, management, and operations workflows to improve reliability and business resilience.



## Climate change is impacting grid reliability

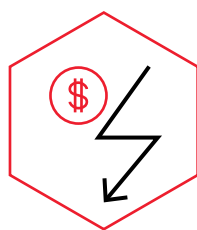
### HIDDEN HAZARD TREES



70%

Of trees that caused sustained outages appeared healthy from inspections.<sup>1</sup>

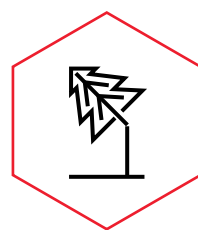
### PRESSURE ON PROFIT



25%

Increase in maintenance expenditures primarily from vegetation management costs due to climate change.<sup>2</sup>

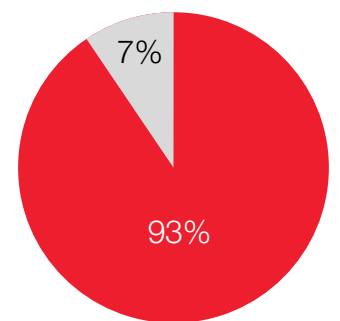
### DETERIORATING RELIABILITY



8%

Annual growth in sustained outages due to vegetation.<sup>1</sup>

### STAFF INEFFICIENCIES

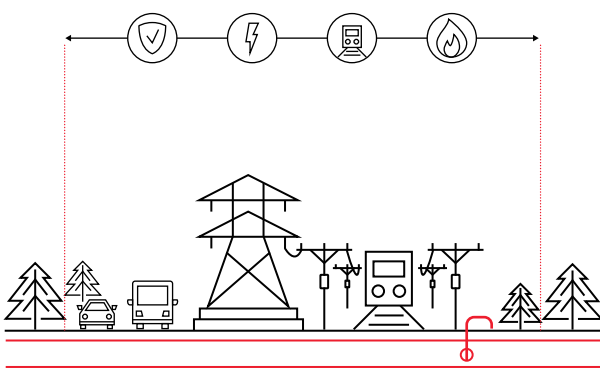


93% of vegetation management time is spent on low-value, time-consuming activities. Only 7% is dedicated towards critical planning efforts.<sup>3</sup>

## Innovation

Hitachi Vegetation Manager enables better, faster, and more informed decision-making by combining satellite data in the back-office with ground-level insights from field devices.

### End-to-End Corridor Management Across Linear Asset Industries



## Key benefits of Hitachi Vegetation Manager

Predict emergent risks

Identify current and future risks and hazards that were previously undetected by traditional inspection methods

Optimize planning

Data-driven decision support to minimize the impact to your assets and improve your bottom line

Single source of truth

Centralized vegetation management from imagery to workforce planning to contractor performance

## Better data, better operations

- 1 Know more**  
Digitalize institutional knowledge to easily share data across your organization for better decision making around risk management, work assignments, and program costs.
- 2 See more**  
Connect field insights with back-office planning to get near real-time visibility of emergent threats, field crew progress, and asset conditions.
- 3 Work smarter**  
Eliminate manual processes by automating low value time-consuming tasks to free staff for more important activities like work planning and coordination.



Based on ground truth studies in a pilot project, vegetation infringement, health, and risk models produced by Hitachi Vegetation Manager were found to be over 90% accurate out-of-the-box.<sup>3</sup>

## Learn more about Hitachi Vegetation Manager



Visit website



Schedule a demo



Watch a video

<sup>1</sup> Source: NERC, CMEP and Vegetation Reports  
<sup>2</sup> Source: Fant et al., 2020. Climate change impacts and costs to U.S. electricity transmission and distribution infrastructure. Energy, 195  
<sup>3</sup> Source: Internal analysis  
 4CAE001308