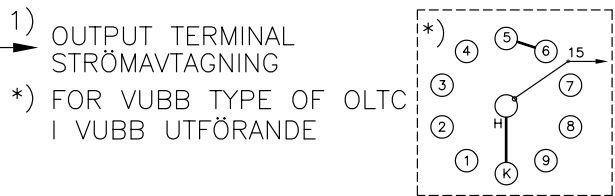
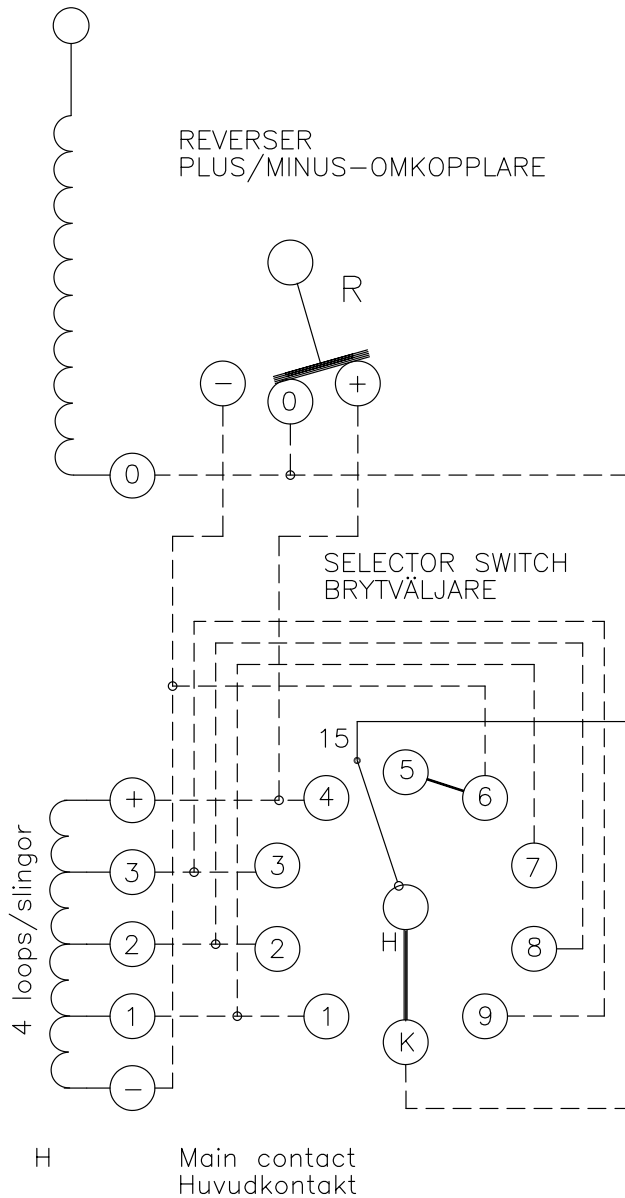


On-load tap-changer type VUBBR, UBBR, 9 tap positions, reverser.  
 Max effective No. of turns in pos 1.  
 The tap-changer is delivered set in pos 5,  
 the preceding pos. was 4.

Lindningskopplare typ VUBBR, UBBR, 9 lägen,  
 plus/minus-koppling.  
 Max antal effektiva varv i läge 1.  
 Lindningskopplaren levereras inställd i läge 5,  
 föregående läge var 4.

Pos Läge	R connects förbinder	H connects förbinder
1	↓	↑
2	0+	0+
3	0+	0+
4	↓	↑
5	↓	↑
6	0-	0-
7	0-	0-
8	↓	↑
9	↓	↑

We reserve all rights in this document and in the information contained therein. Reproduction, use or disclosure to third parties without express authority is strictly forbidden.  
 © ABB '19



1) OUTPUT TERMINAL STRÖMAVTAGNING  
 \*) FOR VUBB TYPE OF OLTC I VUBB UTFÖRANDE  
 1) Internal connections between the terminals 15 of the three phases are included in the star-point type. Connection between 5 and 6 is included. Dashed lines show in delivery not included leads belonging to cleats and leads.

Inre förbindningar mellan uttag 15 i de tre faserna ingår i nollpunktsutförande. Förbindning mellan 5 och 6 ingår. Streckade linjer visar i leveransen ej ingående ledare tillhörande anslutningsdonet.

2	Output for VUBB type added.	DAAN	20	14
1	VUBBR added.	TL	10	27
Rev Ind	Revision	Appd	Year	Week

Accepted by qual control R.Yngvesson	Accepted for prod by	Description (English) CONNECTION DIAGRAM	DATAORIGINAL
Design checked by B-O.Stenestam	Drawn by L.Bergman	Description (own language) KOPPLINGSSCHEMA	File name 0388-2
Drawing checked by M.Hedlund	Issued by Dept Year Week COM/TKO 97 32	Lang Sheet 1	Rev Ind Cont 2 -
Asea Brown Boveri		5492 0388-2	