



Catalog No. Qty  
**TEFPLD1 1**  
**Handle Padlock Device**  
 For E150 Line

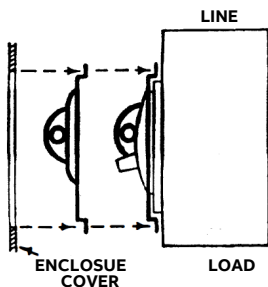
**GEJ5143 Installation Instructions:**

**DESCRIPTION:**

Padlock device fits between breaker and enclosure cover.

**ASSEMBLY:**

1. Remove enclosure cover.
2. Press padlock device over breaker handle boss, padlock hole to the left, line end up.
3. Replace enclosure cover.



—  
 ABB Inc. 305 Gregson Drive Cary, NC 27511  
 electrification.us.abb.com  
 1SQC930052M0201, GEJ5143 February 2023 Rev. B



Catalog No. Qty  
**TEFPLD1 1**  
**Handle Padlock Device**  
 For E150 Line

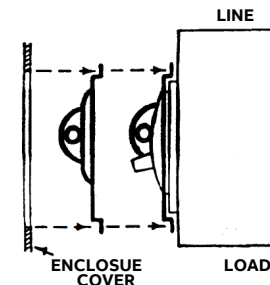
**GEJ5143 Installation Instructions:**

**DESCRIPTION:**

Padlock device fits between breaker and enclosure cover.

**ASSEMBLY:**

1. Remove enclosure cover.
2. Press padlock device over breaker handle boss, padlock hole to the left, line end up.
3. Replace enclosure cover.



—  
 ABB Inc. 305 Gregson Drive Cary, NC 27511  
 electrification.us.abb.com  
 1SQC930052M0201, GEJ5143 February 2023 Rev. B



Catalog No. Qty  
**TEFPLD1 1**  
**Handle Padlock Device**  
 For E150 Line

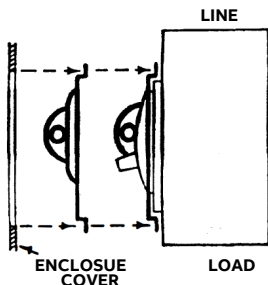
**GEJ5143 Installation Instructions:**

**DESCRIPTION:**

Padlock device fits between breaker and enclosure cover.

**ASSEMBLY:**

1. Remove enclosure cover.
2. Press padlock device over breaker handle boss, padlock hole to the left, line end up.
3. Replace enclosure cover.



—  
 ABB Inc. 305 Gregson Drive Cary, NC 27511  
 electrification.us.abb.com  
 1SQC930052M0201, GEJ5143 February 2023 Rev. B



Catalog No. Qty  
**TEFPLD1 1**  
**Handle Padlock Device**  
 For E150 Line

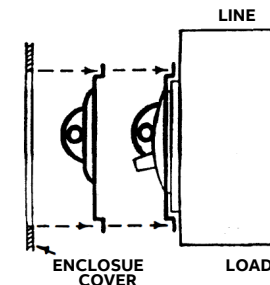
**GEJ5143 Installation Instructions:**

**DESCRIPTION:**

Padlock device fits between breaker and enclosure cover.

**ASSEMBLY:**

1. Remove enclosure cover.
2. Press padlock device over breaker handle boss, padlock hole to the left, line end up.
3. Replace enclosure cover.



—  
 ABB Inc. 305 Gregson Drive Cary, NC 27511  
 electrification.us.abb.com  
 1SQC930052M0201, GEJ5143 February 2023 Rev. B