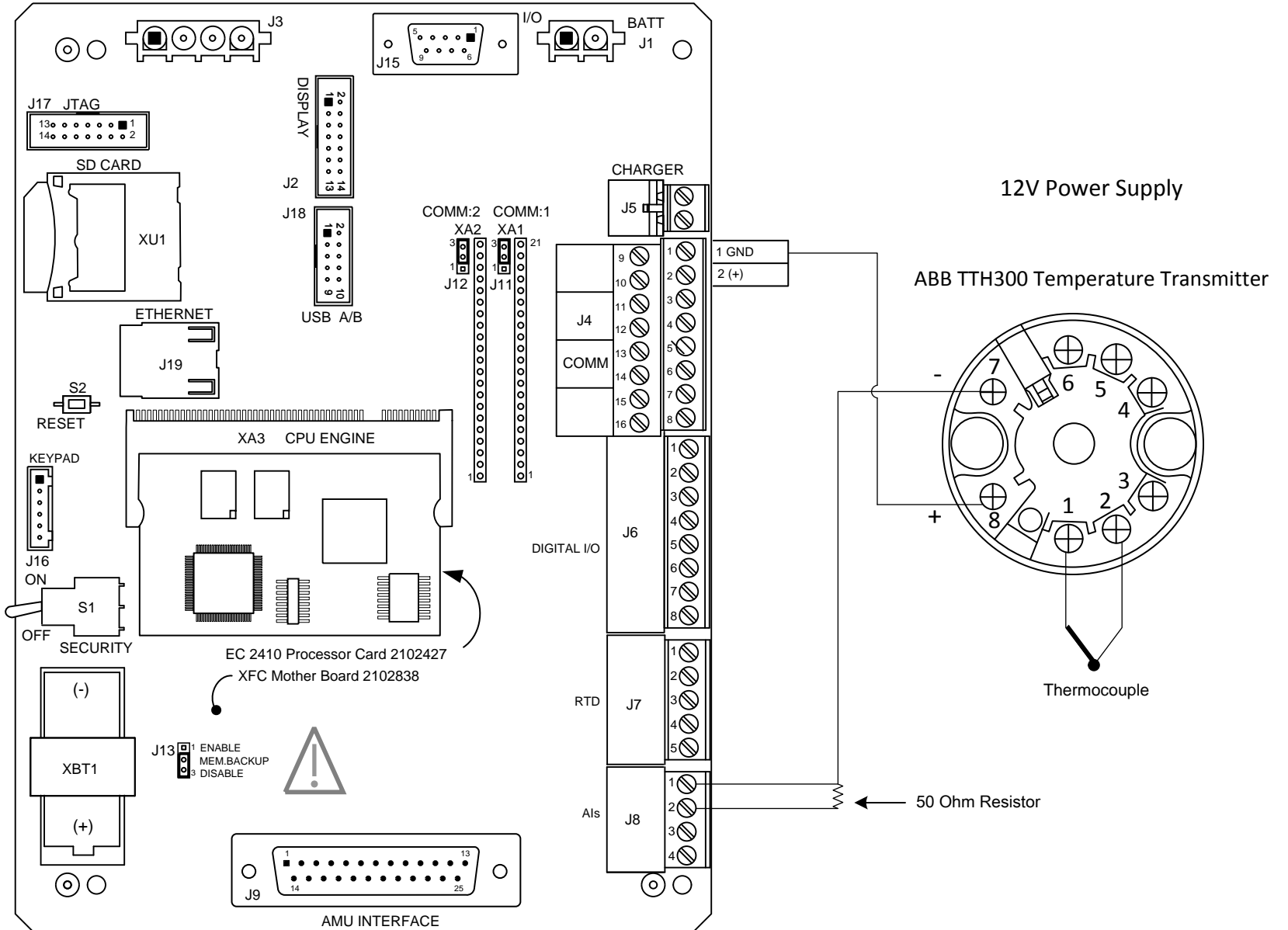


NOTES:

1. WARNING: This drawing does not illustrate the installation methods required for hazardous locations. Prior to any installation in a Classified Hazardous Location, verify installation methods by the Control Drawing referenced on the product's name tag and national and local codes.



REF: N/A

ABB	TOTALFLOW Products	ACTION	DOC TYPE	TITLE	DWG NO.	REV	SHEET
		Lxxxx	UD	XFC ^{G4} (2103329 BD) AI TO TTH300 TEMPERATURE TRANSMITTER WITH 12V POWER	2105035	AA	1 OF 1