

Mining Update

Q1/23

**Electrification | Automation | Digital | Grinding |
Hoisting | Material Handling | Services**



Celebrating female role models in industry

According to the World Economic Forum, women make up only 22% of the global mining workforce. Further, women are significantly underrepresented in senior leadership positions. That is why we need to take responsibility to change this.

We are thrilled to share with you our three-part film series called "Unstoppable". Unstoppable features the inspiring stories of three incredible women who have broken down barriers and made significant contributions to their respective industries.

We are particularly proud to highlight the story of Tove Thelin Täckdal, Concentrating Plant Manager at Copperstone Resources AB, who has dedicated her career to promoting sustainability and innovation in our sector. She is a true trailblazer in the mining industry.

[WATCH TOVE'S STORY](#)

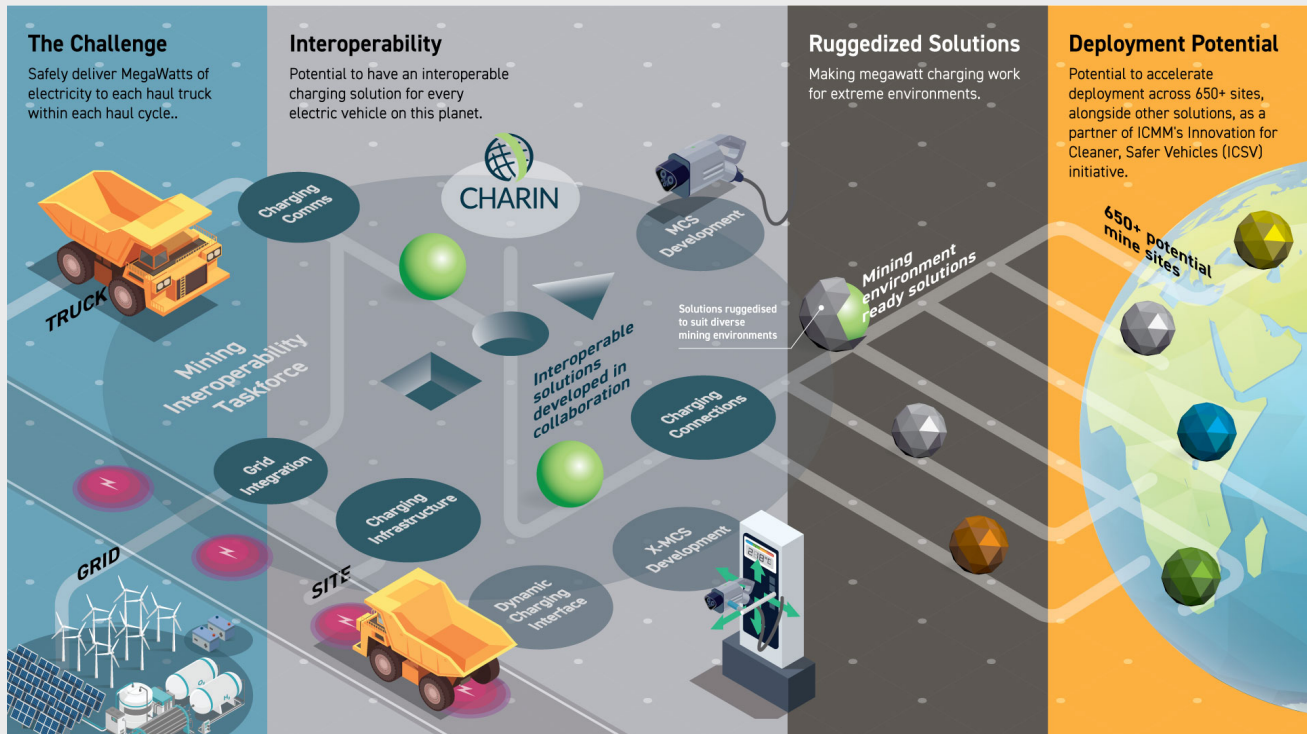


ABB a founding member of the new Mining Taskforce in partnership with CharIN and ICMM

Following past successes and collaborations in electric charging technology for mining haul trucks, we're proud to announce that ABB has a seat in the Mining Interoperability Taskforce launched by CharIN in partnership with ICMM. The group will work together on the interoperability and standardization of charging solutions to reduce duplication in charging infrastructure for mines around the world. Taskforce participants, including BHP, Rio Tinto, Shell, ABB, and GHD, will define requirements, pilot and test the technical capabilities of interoperable ruggedized charging solutions in mining environments.

[READ MORE](#)



Electrified, automated.

What are the requirements for reviving Europe's mining industry in a sustainable way? Our CEO, Björn Rosengren, shared his thoughts with European Round Table for Industry - ERT.

[READ MORE](#)

ABB at The Electric Mine 2023 conference

The world's only global mine electrification event

May 23, 2023 – May 25, 2023



The world's only global mine electrification event

The Electric Mine 2023 conference will run over three full days in Tucson, Arizona!

Max Luedtke, Global Head of Mining, ABB, will be speaking with Fabiana Cavalcante, Global Head of E-Mobility Traction, ABB, on Day 1, 14:30-15:30: "Decarbonising the mining industry from grid-to-wheel".

Jonathan Thomas, Product Manager - Material Handling, ABB, will be speaking on Day 3, 12:30-13:00: "Gearless Conveyor Drives - higher efficiency, less maintenance and reduced environmental footprint".

[JOIN ABB'S EXPERTS](#)

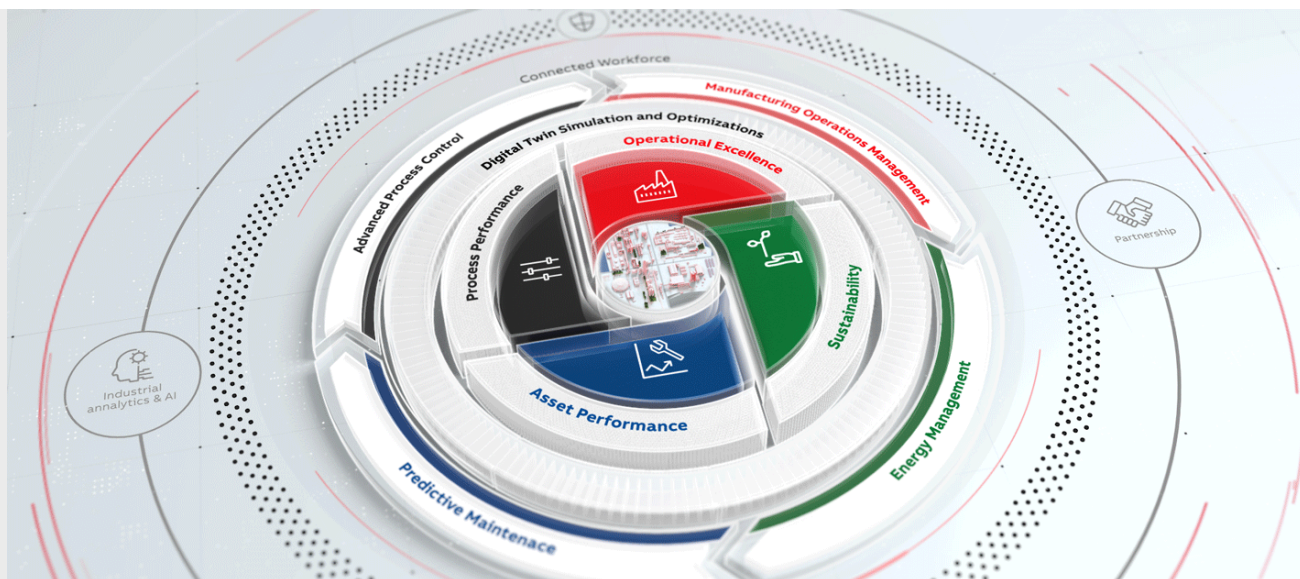


Transition your mining hauling trucks from diesel to electric with ABB eMine™ Trolley System

We believe in the trolley technology which has been in existence for decades and which is now back as a key technology for mining in recent years.

ABB's trolley system is the perfect technology for helping you transition to an all-electric mine. Built on decades of electrification experience and expertise, ABB eMine™ Trolley system can reduce your diesel consumption by up to 90%, lowering your energy costs and your environmental impact at the same time. Plus, electrified trucks run at a higher speed and provide better speed on-grade.

[WATCH ABB TROLLEY SYSTEM IN ACTION](#)



Value-driven industrial software solutions

ABB is leading with industrial software and creating success by transforming the industry and addressing the world's energy and sustainability challenges.

Our industrial software solutions are based on decades of experience gained in providing challenging process automation, information management systems, and services to process industries, utilities, and manufacturers worldwide. New digital tools are being developed at a much faster pace than ever before, in collaboration with ecosystem players.

[FIND OUT MORE](#)

What forward-thinking mines are doing to meet current challenges in grinding



By Marcelo Perrucci,
Global Product Line Manager —
Grinding at ABB



Grinding transformation

Gearless mill drives, digitalization, AI and analytics are transforming grinding operations at mines worldwide

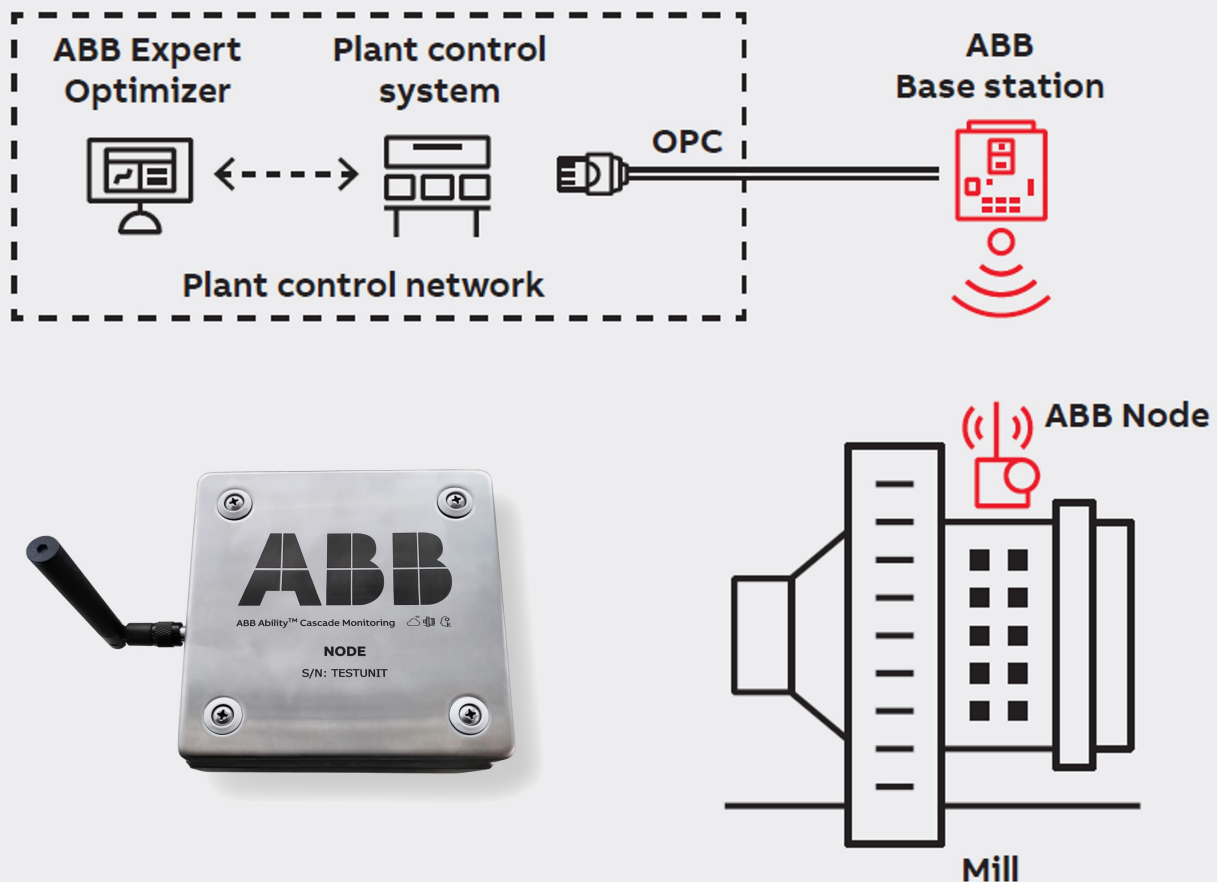
ABB

Grinding: optimized

Grinding operations at mines around the world are transforming. Multiple marketplace pressures are driving mining owners to deploy technology solutions that minimize energy use and maximize productivity while achieving sustainability objectives.

According to ABB's Marcelo Perrucci, Global Product Line Manager - Grinding: "Extraction rates have to be raised sustainably. And grinding machines are critical components to achieving that sustainability".

[READ THE eBook](#)



Monitor what's happening inside your mill with a wireless vibration solution

The more information on the grinding circuit, the more that can be used to drive it to its optimum. Measure online key grinding features with ABB's wireless solution: ABB Ability™ Cascade Monitoring for grinding. The hardware is easily attached to the mill's shell and continuously shares data with the plant's control system. These milling features support operators to achieve optimum efficiency and indicate if current conditions may be causing excessive wear on liners.

[LEARN MORE](#)



ABB Mining R&D in the North of Sweden - "It's great to be where our customers are"

Lisa Önnertlov is an industrial designer with a Bachelor in Fine Art from Umeå Institute of Design.

After eight years as a development engineer at Boliden, she made the move to ABB. In her new role, she is now part of a new, international R&D team, working towards efficient, safe and modern mining operations. The circular perspective is important, as is working in a customer-oriented and exploratory way.

"I get to drive creative processes from start to finish. It's great fun and very stimulating to be able to explore, draw conclusions and find the best solution", says Lisa.

[READ LISA'S STORY](#)



Meet Wendy Norman, Sales Manager for mine hoists

"I am very proud of my team - they are phenomenal. Because everyone in the team is very different, there is always someone who thinks outside the box. This makes the team very good at coming up with innovative solutions that drive our work forward," says Wendy Norman.

[READ HER STORY](#)

MINING TECHNOLOGY EXCELLENCE AWARDS 2022



MINING TECHNOLOGY EXCELLENCE AWARDS 2022

“

Technology provider **ABB** wins the *Product Launches* award this year due to several notable projects including the development of its eMine™ solutions and the introduction of a new standardised hoist control system - ABB Ability™ NGX Hoist Control

”

2022 Mining Technology Excellence Awards

We are honored to share that we are the winner of the Product Launches category in the 2022 Mining Technology Excellence Awards.

Mining Technology said: "The company's award win came off the back of the outstanding launch of eMine™ system and the introduction of a new standardised hoist control system – ABB Ability™ NGX Hoist Control."

Congratulations to the ABB Mining team and a big thank you to our clients for their trust in us.

[SEE THE RESULTS](#)



Making a world of difference in mining

Mining – driving the clean energy transition

Today, all mining equipment, from mine to port, can be electrified, and ABB is helping mining companies around the world to convert existing mine operations from being powered by fossil fuel to being all-electric. Once electrified and automated, production systems can be integrated to further optimize operations — from hoists, grinding mills and conveyors, to the large haul trucks used in modern mining.

[SEE HOW ABB IS MAKING A WORLD OF DIFFERENCE](#)

MINING THE BENEFITS OF AUTOMATED EV CHARGING

Mining environments are routinely referred to as rugged, harsh, or challenging. They are also places where safety must be maximized and human exposure minimized. With this in mind, ABB has developed a pilot version of an automated charging system that can be used by any electric haul truck without human intervention. Fast, flexible, and fully automated, the solution

ABB has developed a pilot version of an automated charging system that can be used by any electric haul truck.

provides the highest power available on today's market, thus minimizing mobile asset downtime. Known as eMine™ FastCharge, the system can be remotely monitored and controlled to optimize the charging process and energy usage in real time, hence reducing an operation's environmental impact while improving its productivity.

Based on widely adopted and open automotive industry standards that are interoperable and

BEV OEM agnostic, eMine™ FastCharge does not require complex installation, thus lowering infrastructure costs and optimizing CAPEX/OPEX. Indeed, the entire charging station and its modules can be located separately, allowing the solution to seamlessly adapt as a mine's configuration and requirements evolve.

Once up and running, the solution's charging process is enhanced by a vehicle recognition camera system designed for maximum safety throughout the operation. Modular in design, eMine™ FastCharge's building block configuration makes it easy to adapt to a mine's operational and infrastructure needs, while making it future-ready for higher charging powers.

Thanks to an enclosure specifically designed to prevent ingress from dust and dirt, the solution is ready-made for the harshest environmental conditions prevailing in mining. •



ABB Review 01/2023 900th edition - Journey of innovation

The innovations we showcase here – charging for electric mining vehicles, a next-generation drive control platform, collaborative operations for shipping fleets and more – are among the latest examples of ABB's work to make possible what wasn't possible before.

SELECTED INNOVATIONS IN BRIEF

Contact:



[Unsubscribe](#) | [Privacy policy](#) | [Forward to a friend](#)