

System 800xA Language Package Installation

System Version 6.0

Power and productivity
for a better world™



System 800xA

Language Package Installation

System Version 6.0

NOTICE

This document contains information about one or more ABB products and may include a description of or a reference to one or more standards that may be generally relevant to the ABB products. The presence of any such description of a standard or reference to a standard is not a representation that all of the ABB products referenced in this document support all of the features of the described or referenced standard. In order to determine the specific features supported by a particular ABB product, the reader should consult the product specifications for the particular ABB product.

ABB may have one or more patents or pending patent applications protecting the intellectual property in the ABB products described in this document.

The information in this document is subject to change without notice and should not be construed as a commitment by ABB. ABB assumes no responsibility for any errors that may appear in this document.

Products described or referenced in this document are designed to be connected, and to communicate information and data via a secure network. It is the sole responsibility of the system/product owner to provide and continuously ensure a secure connection between the product and the system network and/or any other networks that may be connected.

The system/product owners must establish and maintain appropriate measures, including, but not limited to, the installation of firewalls, application of authentication measures, encryption of data, installation of antivirus programs, and so on, to protect the system, its products and networks, against security breaches, unauthorized access, interference, intrusion, leakage, and/or theft of data or information.

ABB verifies the function of released products and updates. However system/product owners are ultimately responsible to ensure that any system update (including but not limited to code changes, configuration file changes, third-party software updates or patches, hardware change out, and so on) is compatible with the security measures implemented. The system/product owners must verify that the system and associated products function as expected in the environment they are deployed.

In no event shall ABB be liable for direct, indirect, special, incidental or consequential damages of any nature or kind arising from the use of this document, nor shall ABB be liable for incidental or consequential damages arising from use of any software or hardware described in this document.

This document and parts thereof must not be reproduced or copied without written permission from ABB, and the contents thereof must not be imparted to a third party nor used for any unauthorized purpose.

The software or hardware described in this document is furnished under a license and may be used, copied, or disclosed only in accordance with the terms of such license. This product meets the requirements specified in EMC Directive 2004/108/EC and in Low Voltage Directive 2006/95/EC.

TRADEMARKS

All rights to copyrights, registered trademarks, and trademarks reside with their respective owners.

Copyright © 2003-2016 by ABB.
All rights reserved.

Release: October 2016
Document number: 2PAA102031-603

Table of Contents

About This User Manual

Introduction	7
User Manual Conventions	7
Warning, Caution, Information, and Tip Icons	7
Terminology.....	8

Section 1 - Overview

National Language Support.....	11
Available Language Packages	11
Supported Language Packages.....	12
Prerequisites	12
System Preparation.....	13
Uninstallation Procedure	13

Section 2 - Upgrade and Update

Upgrade and Update of an existing system	15
--	----

Section 3 - Installation

Overview.....	17
Installation Procedure	17

Section 4 - Update Procedure

Section 5 - Regional Setting

Overview.....	23
Regional Settings for French, German, Spanish, and Swedish languages.....	24
Regional Settings for Chinese, Russian and Arabic.....	26

Number and Date Format Settings on operator clients 31

Index

About This User Manual

Introduction

This Installation Manual describes how to install a System 800xA Language Package.

The guide is organized as follows:

- This Chapter “About this User Manual” provides an overview, user manual conventions, terminology, and acronyms.
- Section 1 describes the prerequisites, system preparations and the uninstall procedure necessary to install the Language Package.
- Section 2 describes how to install and complete post installation settings for the Language Package.
- Section 3 describes necessary regional settings for Language Package.

User Manual Conventions

Microsoft Windows conventions are normally used for the standard presentation of material when entering text, key sequences, prompts, messages, menu items, screen elements, etc.

Warning, Caution, Information, and Tip Icons

This manual includes **Warning**, **Caution**, and **Information** where appropriate to point out safety related or other important information. It also includes **Tip** to point out useful hints to the reader. The corresponding symbols should be interpreted as follows:



Electrical warning icon indicates the presence of a hazard which could result in *electrical shock*.



Warning icon indicates the presence of a hazard which could result in *personal injury*.



Caution icon indicates important information or warning related to the concept discussed in the text. It might indicate the presence of a hazard which could result in *corruption of software or damage to equipment/property*.



Information icon alerts the reader to pertinent facts and conditions.



Tip icon indicates advice on, for example, how to design your project or how to use a certain function

Although **Warning** hazards are related to personal injury, and **Caution** hazards are associated with equipment or property damage, it should be understood that operation of damaged equipment could, under certain operational conditions, result in degraded process performance leading to personal injury or death. Therefore, **fully comply** with all **Warning** and **Caution** notices.

Terminology

Terms that are unique to this instruction may be included here as part of this manual.

Term/Acronym	Description
NLS	Native Language Support or National Language Support.
System Locale	Determines the appropriate bitmap fonts and OEM, ANSI, and MAC code pages which are defaults for the system. This only affects applications that are not fully unicode.

Term/Acronym	Description
User Locale	Determines the language settings used for formatting dates, times, currency, and numbers for operator user. Also, determines the sort order for sorting text.
Operator Workplace	Logging in Operator workplace with Operator privileges and applying Process operation filter.

Section 1 Overview

National Language Support

This manual outlines the system requirements, procedures to install, upgrade, and uninstall a System 800xA Language Package.

Available Language Packages

A number of Language Packages are available for System 800xA, see [Table 1](#), which includes translations of the user-interface for different operator functions into different languages.



It is recommended to install Max One Language Package in a system.

The engineering environment including configuration dialogs are not localized by any System 800xA Language Package.

Supported Language Packages

The supported Language Packages for System 800xA are given in [Table 1](#).

Table 1. Language Packages and the Functions Supported

Language/ Product	Arabic	Chinese	French	German	Swedish	Russian	Spanish
Operator environment	X	X	X	X	X	X	X
Batch Management		X		X	X		
PLC Connect		X					
*Safety	X	X	X	X	X	X	X
SMS and Email Messaging			X	X	X		X
SFC Viewer	X	X	X	X	X	X	X
AC 800M	X	X	X	X	X	X	X
AC400		X	X	X	X	X	
FF		X					
Melody				X			

* Confirmation and authentication operation dialog Window for SIL-2 high integrity controller.

Prerequisites

The Language Package must be installed on a system after all 800xA applicable functions such as Base, AC 800M Connectivity have been installed.



The system must be configured with US English Regional Settings during installation, for details refer [Section 5, Regional Setting](#).

System Preparation

Once the prerequisites are installed, the following steps will ensure that the system is ready for installation of the Language Package.

1. Ensure that all applicable functions such as Base, AC 800M are installed.
2. The valid version of the Language Package must be available to install.



Download the valid version of the Language Package from the ABB library and unzip the file into a new folder.

Uninstallation Procedure

To uninstall the Language Package perform the following steps:



Uninstallation is required only in case of an update of a language package. Uninstallation will not remove the system extensions already loaded in the system.

1. Log in with an administrator account.
2. Click **Start** select **Settings > Control Panel > Programs and Features**.
3. Select the Language Package to be uninstalled.
4. Click **Uninstall a program**.
5. A confirmation dialog box appears. Click **Yes** to proceed with the uninstallation.

The Language Package is now uninstalled from the system.

Section 2 Upgrade and Update

Upgrade and Update of an existing system

This chapter describes how to upgrade an existing 4.1, and 5.0 and its service packs system to a 6.0 system.

1. Perform a backup of the existing system according to Upgrade and Installation Instruction for System 800xA 6.0.
2. While restoring the system maintenance backup, ignore the warning message regarding the previous Language Package extensions.
3. Install the 6.0 Language Package according to [Section 3, Installation](#).



During the upgrade process of Primary Aspect Server, the client system will not function. For the client system to function, perform the following:

1. Execute the complete upgrade process.
2. Install the corresponding Language Package.
3. Load the System Extensions.



During the upgrade process, the Client node displays all static text in US English which is translated by the Language Package. The translations of this static text is activated when a new Language Package is installed and the regional settings are changed to the local language.



During the Update process if the System is already installed with the previous versions of Language Package SV 6.0, then during the installation the existing versions will be detected and should be uninstalled before proceeding further. After Installation of Language Package, the system extensions will appear in the System Extension Maintenance of the Configuration Wizard.

Section 3 Installation

Overview



The installation can be performed without stopping the System 800xA. For Chinese, Russian and Arabic Language Package, the client node has to be restarted after Regional Settings has been made.



Batch and Melody language packages can be used for both server and client nodes.



Read the Release Notes delivered with System 800xA Language Package.

Installation Procedure

The System 800xA Language Package Installation Wizard is used to begin the installation.

1. Launch the *Node Preparation Tool (NPT)* by starting the Setup application that is available on the root of the *Installation Media*.

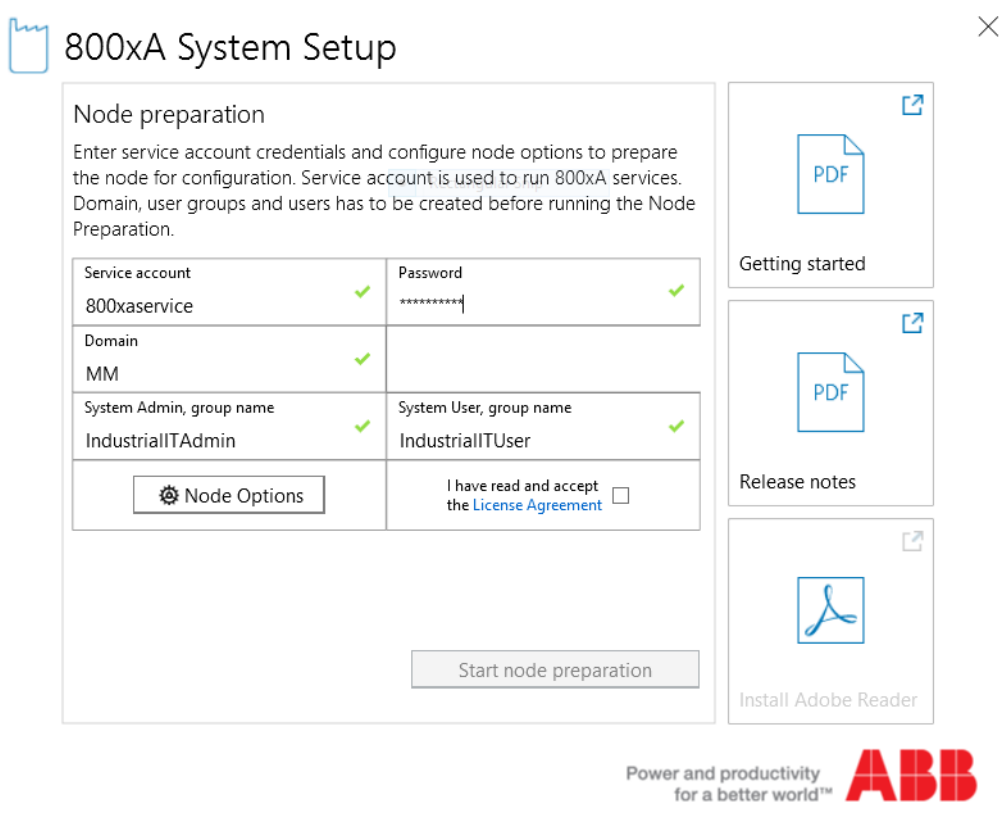


Figure 1. Node preparation tool

2. Enter 800xA Service account credentials.
3. Click **Start Node Preparation**.
4. Launch the System Configuration Console and select **System setup > Configure System**.
5. For language package installation refer to the heading Prepare Add-ons in Section System Installation of *System 800xA Installation Update and Upgrade getting started Manual (2PAA111708*)*.



Language Package may only be installed on systems where all 800xA applicable functions such as Base, AC 800M are installed. It is possible to select more than one package at once but, the installation of packages will occur in series one by one.



Online Help can be installed in any type of node. If the language chm's are installed then this will replace (renames the english file) the English file.



Once the Online help for the Extended Operation.chm for 800xA Base system is installed, the localized sections of the help will be displayed in the local language irrespective of the User Locale selected.

For PPA Help, navigate to ABB 800xA\Base\help folder. Rename the Operation.chm file in the above path to Operation_ENU.chm, before installing the help language pack. If help file is required in english then rename the Operation.chm file to Operation_xxx (where xxx is the language). For example in the case of Chinese the file name is Operation_CHS and rename the Operation_ENU.chm to Operation.chm.

6. All NLS system extensions are loaded automatically by SI and No manual intervention is required.

To validate the installed Language Package perform the following steps:

1. Right-click **Start Menu > Control Panel > Programs and Features**.
2. Locate the Language Package that is installed.
3. Note the version number.
4. Locate the folder from where the Language Package has been installed.



A Versioninfo.txt file is present in every folder of the National Language Support installation packages. The version number of each package can be found in this file.

5. Open the folder to verify the Language Package version.

For example, if 800xA Base Chinese Language Package is installed.

Open the Language Package folder. To verify the version for 800xA Base Chinese Language Package perform the following:

- a. Open the folder NLS\CHS

- b. Locate the BaseVersionInfo.txt file.
6. Click the Versioninfo.txt file to open it.

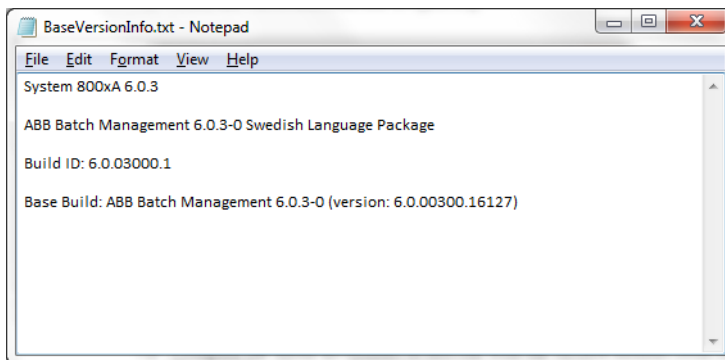


Figure 2. VersionInfo.txt

7. Compare the Build ID number in this file with the version number from the Programs and Features.

For systems with 800xA with only Melody installed, perform the following steps:



Melody application must be loaded after execute the following steps.

1. On Melody Config Server:
 - a. Stop Tag Importer.
 - b. Start Tag Importer.
2. Reload the operations part of all Function Diagrams from Composer by:
 - a. Select a running phase.
 - b. Select the appropriate project in Composer.
 - c. Select all Functions.
 - d. Right-click **Operations Code Generation...**
 - e. Confirm the upcoming dialog by clicking **OK**.

Section 4 Update Procedure

Refer to the **Section 2 Updating System 800xA** of *System 800xA 6.0 Update Manual (2PAA114580*)* for updating System 800xA Language Package.



Maintenance Stop and Node restart will be skipped for Language Package Update as it is not applicable.

Section 5 Regional Setting

Overview

The Regional Setting includes the **User Locale** and **System Locale** settings which must to be configured. Regional settings are used to define the following in Windows and System 800xA:

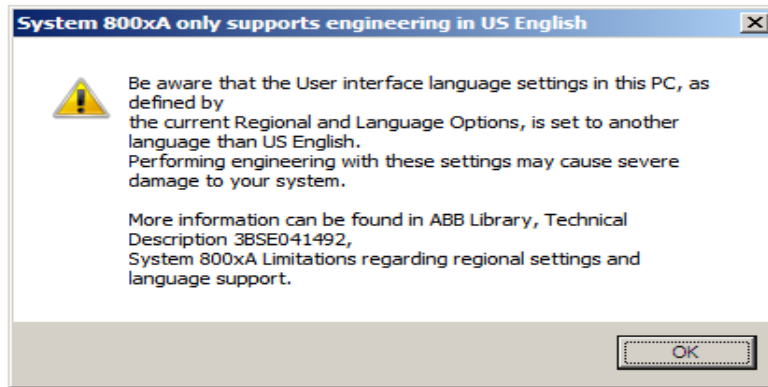
- User interface language (defined by User Locale and System Locale settings.)
- Number and Date format.

For details see [Table 2](#), [Table 3](#) and [Table 4](#).

The **User Locale** settings are defined for each user, for example, the administrator, operator(s), and engineer(s) of system 800xA. The User Locale determines the language settings used for formatting dates, time, currency, and numbers for each user.

The **System Locale** settings are defined for the PC node and determines the appropriate bitmap fonts and OEM, ANSI, and MAC code pages for the system. Administrator rights are needed to change these settings. This only affects applications that are not fully unicode.

The Regional Settings mentioned in this manual should be performed on operator clients intended for local language use **ONLY** and **NOT** on engineer clients. If a user is opening *Plant Explorer* without US English User Locale settings a notification as shown below is displayed.



The Regional Settings for Chinese, Russian and Arabic languages are different from French, German, Spanish, and Swedish.



Regional Settings for Chinese and Arabic Language Package requires installation of the East Asian Language files first. For details see [Regional Settings for Chinese, Russian and Arabic](#) on page 26.

Regional Settings for French, German, Spanish, and Swedish languages

System Locale for FR, DE, ES, and SE

The **System Locale** settings are defined for the PC node and administrator rights are necessary to configure it. The **System Locale** should always be set to US English for FR, DE, ES, and SE. In most cases this is the default setting; however, this can be verified by performing the following steps.



Server based clients are supported for French, German, Spanish, and Swedish languages only.

To set the **System Locale** setting perform the following steps:

1. Log in with an administrator account.
2. Right-click **Start > Control Panel**.
3. Click **Region Options**.
4. Click the **Administrative** tab, and from the standard formats area select US English in the drop down menu.



Administrator rights are needed to see the Administrative tab.

5. Click **Apply** and then **Ok**.

User Locale for FR, DE, ES, and SE

The User Locale shall be configured for all Operator Users to match the installed Language Package. To set **User Locale** settings perform the following steps:

1. Log in using Operator account for which the User Locale has to be changed.
2. Right-click **Start > Control Panel**.
3. Click **Region Options**.
4. Click the **Regional Options** tab and from the standard formats area select French, German, Spanish or Swedish in the drop down menu.
5. Click **Apply** and then **Ok**.

Internet Explorer Setting for FR, DE, ES, and SE

The encoding language in Internet Explorer must be set to “Western European (Windows).”

To change the Internet Explorer setting perform the following steps:

1. Click on **Internet Explorer** to open it.
2. Click **View** from the menu bar.
3. Navigate to **Encoding** from the drop down menu.
4. Select **Western European (Windows)**.



Input keyboard language for Operator Users on all operator client nodes can be set to the same local language if a localized keyboard is used.

Table 2. Regional Setting for French, German, Spanish, and Swedish Language Packages

System 800xA	Node type/User	User Locale	System Locale	IE encoding Language	Supported Characters	Input Keyboard Language
System 800xA with French, German, Swedish, Spanish Language Packages installed	Server Node(s)	US English	US English	Western European (Windows)	Latin 1 Characters(2)	ANSI Latin 1 language
	Operator node(s)/users "Server based client" (1) node type supported	FR,DE, ES,SE, or any ANSI Latin 1 language	US English	Western European (Windows)	Latin Characters(2)	ANSI Latin 1 language
	Engineer node(s)/users	US English	US English	Western European (Windows)	Latin Characters(2)	ANSI Latin 1 language

1. In 6.0, all node types except the domain server include client functionality. These Clients are referred to as "Server based clients."
2. Refer to *System 800xA Localization (2PAA101940*)* for information on the supported characters during localization of system 800xA.

Regional Settings for Chinese, Russian and Arabic



For Chinese, Russian and Arabic the User Locale must be changed for Operator Users. The System Locale settings must be changed on all Operator client nodes.



"Server based client node" type is **NOT** supported for Chinese, Russian and Arabic languages.

The System Locale settings can only be set by a user with administrator rights and applies to all users on the node.



Windows 8 include support for East Asian characters in the standard installation for Chinese and Arabic languages.

Input Language



Input keyboard language for Operator Users can be set to the same local language if a localized keyboard is used.

1. Log in using Operator account for which input language has to be changed.
2. Right-click **Start > Control Panel > Language Options**.
3. Click **Add a Language**.
4. Select **Arabic or Chinese (Simplified) or Russian Language**.
5. Click **Add**.
6. Click **Move up**. The language at the top of the list is the primary language.



Close all open applications and re-open them, for change in the input language to reflect.

System Locale for Chinese, Russian and Arabic

The **System Locale** settings are defined for the PC node and administrator rights are necessary to perform this. The System Locale settings must be changed only on all Operator client nodes.

To set the **System Locale** setting perform the following steps:

1. Log in with an administrator account.
2. Right-click **Start > Control Panel**.
3. Click **Region Options**.
4. Click the **Administrative** tab, and click **Change System Locale** from the Current System locale area select Chinese (PRC) or Arabic or Russian from the drop down menu.



Administrator rights are necessary to see the Administrative tab.

5. Click **Ok** and then Click **Restart** now. See [Figure 3](#).

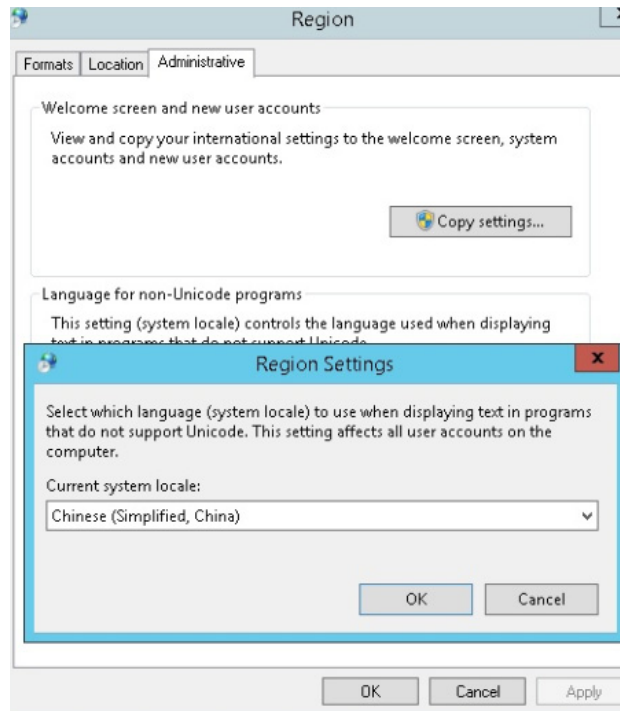


Figure 3. System Locale

User Locale for Chinese Russian, and Arabic

The **User Locale** settings are defined for each user, for example, Operator(s) of system 800xA. The User Locale selects the Language Package to be displayed for operators.

To set **User Locale** settings perform the following steps:

1. Log in using Operator account for which the User Locale has to be changed.
2. Right-click **Start > Control Panel**.
3. Click **Region Options**.

4. Click the **Formats** tab, and from the Current formats area select Chinese (PRC) or Russian or Arabic from the drop down menu.
5. Click **Apply** and then **Ok**. See [Figure 4](#).

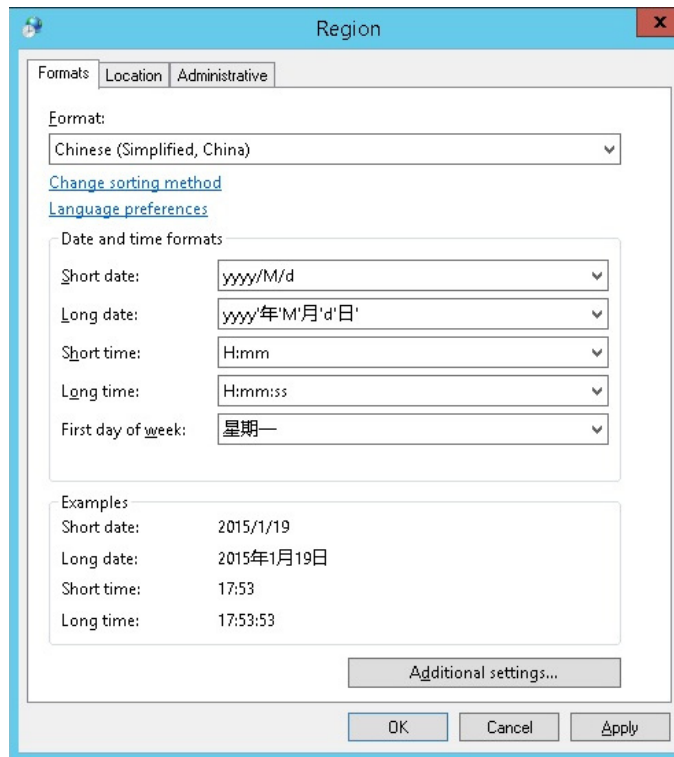


Figure 4. User Locale

Internet Explorer Setting for Chinese, Russian and Arabic

The encoding language in Internet Explorer must be set to Chinese Simplified (GB2312).

To change the Internet Explorer setting perform the following steps:

1. Log in using Operator account for which the Internet Explorer setting has to be changed.
2. Click on **Internet Explorer** to open it.
3. Click **View** from the menu bar.
4. Navigate to **Encoding** from the drop down menu.
5. Select **Chinese Simplified (GB2312)**.
6. For Arabic, set the encoding language to Arabic (Windows).



For Russian, set the encoding language to Cyrillic (Windows).

Table 3. Regional Setting for Chinese, Russian and Arabic Language Packages

System 800xA	Node type/User	User Locale	System Locale	IE encoding Language	Supported Characters	Input Keyboard Language
System 800xA with Chinese or Russian or Arabic Language Package installed.	Server Node(s)	US English	US English	Western European (Windows)	Any	Any
	Operator node(s)/users "Server based client" (1) node type NOT supported	Chinese or Russian or Arabic	Chinese or Russian or Arabic	Corresponding to installed Language Package	Corresponding to installed Language Package	Corresponding to installed Language Package
	Engineer node(s)/users	US English	US English	Western European (Windows)	Corresponding to installed Language Package	Corresponding to installed Language Package

1. In 5.1 all node types except the domain server include client functionality. These Clients are referred to as "Server based clients."
2. Refer to *Industrial^{IT} 800xA, System, Localization (2PAA101940*)* for information on the supported characters during localization of system 800xA.

Index

A

Administrator rights. 25
Advanced tab 25

C

Chinese Simplified 30

E

Encoding language 29

I

Installation 17
Installation Wizard 17

N

NLS 8
Number and Date 31

O

Operator Workplace 19

P

Prerequisites 12

R

Regional Setting 23
Release Notes 17

S

Supported Language Packages 12
System Locale 8
System Preparation 13

U

Upgrade 15
User Locale 9

W

Western European 25

Contact us

www.abb.com/800xA
www.abb.com/controlsystems

Copyright© 2016 ABB.
All rights reserved.

2PAA102031-603

Power and productivity
for a better world™

