

Marketing / Power enclosures, September 2015

System pro *E* power Panelboard  
Panelboard, Custom panelboard, Pan assembly  
ArTu PB

# System pro *E* power Panelboard

## ArTu PB general

- **PANELBOARD** – A single panel or a group of panel units designed for assembly in the form of a single panel; includes buses, automatic overcurrent devices, and may be equipped with switches for the control of light, heat, or power circuits; designed to be placed in a cabinet or cutout box placed in or against a wall or partition and **accessible only from the front** (quote UL67).
- **POWER PANELBOARD** – A power panelboard is one having 10 percent or fewer of its overcurrent devices protecting lighting and appliance branch circuits (quote UL67).



### IEC61439 1-2 (PSC assembly)

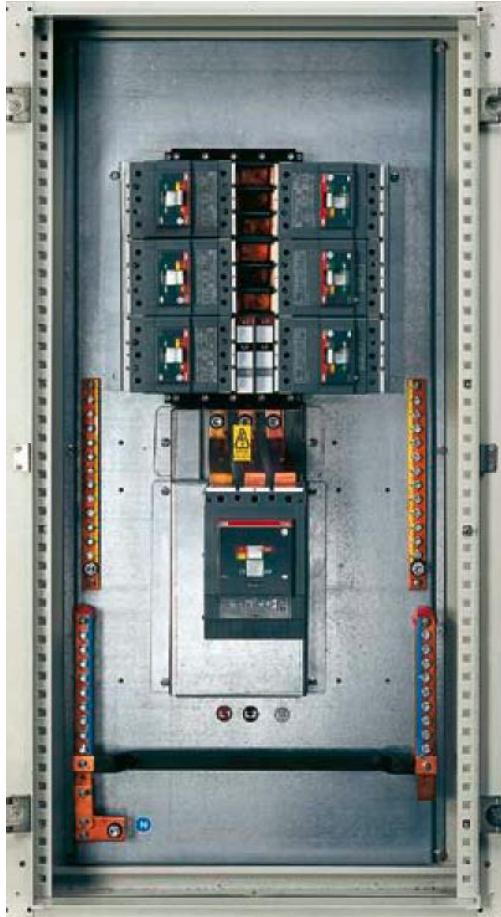
- Rated current up to 1250A
- Rated service voltage 690V AC
- Rated insulation voltage 1000V AC
- Impulse withstand voltage 8kV
- Short-circuit withstand current:
  - \*phase-phase up to 65 kA 1s
  - \*phase-neutral up to 39 kA 1s
- Rated max. peak short-circuit current 143kA
- Protection degree IP43 with door
- Mechanical resistance IK08
- Segregation form 4b

### UL67 (Panelboards)

- Rated current up to 800A
- Rated voltage 480V AC
- Short-circuit withstand current up to 50 kA
- 6 or 10 outgoing ways

# System pro E power Panelboard

## ArTu PB speciality



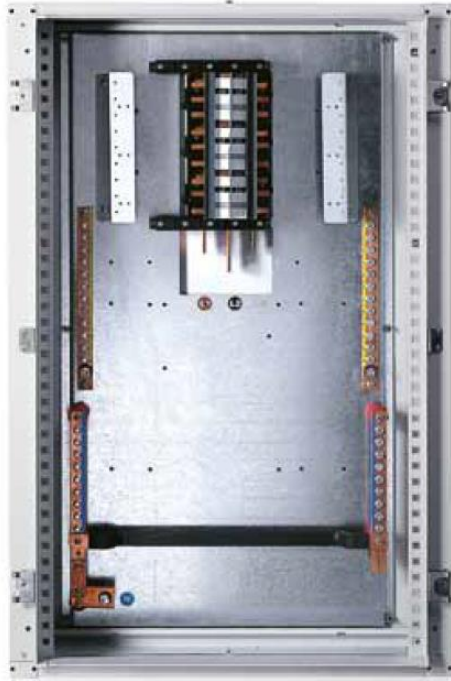
**ArTu PB Panelboard is a simple and quick mounted power distribution panel up to 1250A. This board's system allows to perform quick assembling of a switchgear directly on the power plant almost in instant out of few components.**

- Low level of power distribution
- MCCB devices only
- Option with incoming breaker or direct cable connection kit
- Side metering container
- Optionally (ArTu L 240mm. structure): glazed door, plinth 100mm, top/bottom connection box, side external cable container
- Incoming breakers: Tmax T3, XT3, T5, T6 - 3/4 poles and T7 - 3 poles (250-1250A)
- Outgoing breakers: Tmax T1, T3, XT1, XT3 - 3/4 poles with or without RCD  
T4, T5 - 3/4 poles without RCD
- Busbar system rating: 400A, 800A, 1250A
- Plug in busbars connection base for outgoing devices
- Available in three sizes with maximum capacity of 6, 12 or 16 (18) outgoing ways
- High level of safety – all conductive parts are completely isolated

# System pro E power Panelboard ArTu PB offer – IEC tested



**Panelboard**

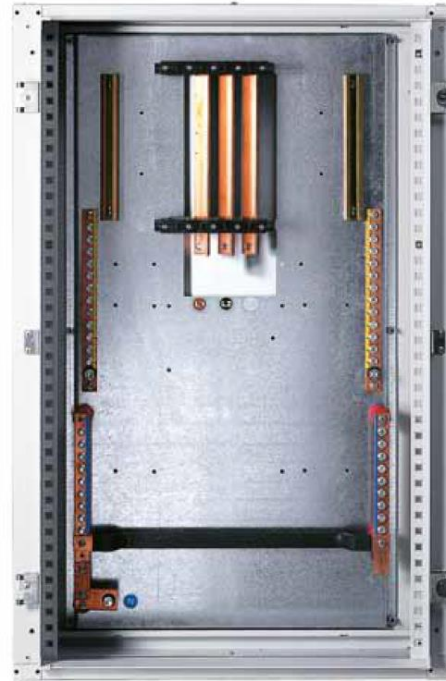


**Complete assembly! Fixed capacity.**

- To be equipped: inner door, breakers, connection kit
- 5 enclosure dimensions
- Up to 800A
- Outgoing T1 single pole - T1 - T2 - T3 - XT1 - XT3 3|4 pole

September 9, 2015

**Custom Panelboard**

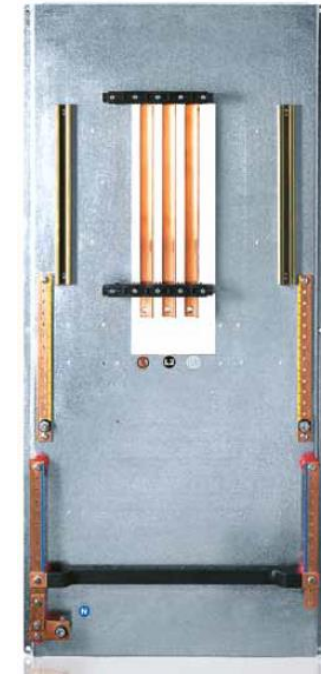


**Universal solution!**

- To be equipped: inner door, breakers, connection kit, plug in busbars connection base
- 4 enclosure dimensions
- Up to **1250A**
- Outgoing T1 single pole - T1 - T2 - T3 - **T4 - T5** - XT1 - XT3

© ABB Group

**Pan Assembly**



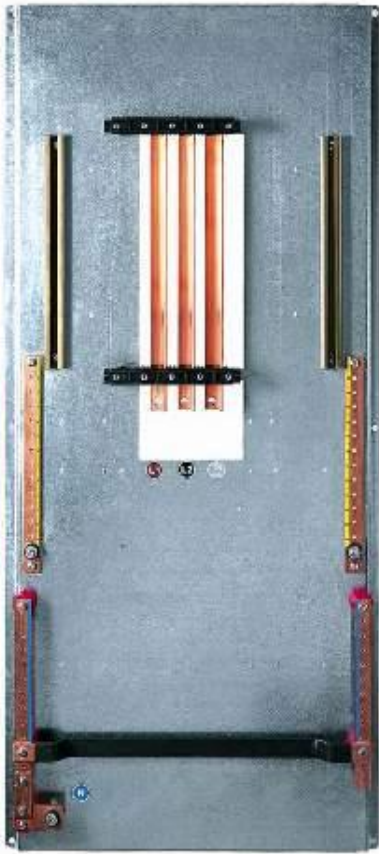
**Without a cabinet!**

- To be equipped: inner door, breakers, connection kit, plug in busbars connection base, cabinet
- 3 mounting plate dimensions
- Up to 800A
- Outgoing T1 single pole - T1 - T2 - T3 - XT1 - XT3 3|4 pole

# System pro *E* power Panelboard ArTu PB offer – UL homologation



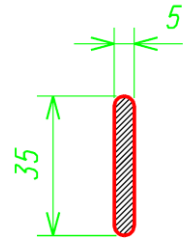
## Pan Assembly



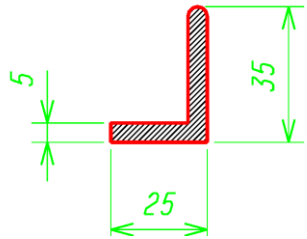
### Without a cabinet!

- The creepage distance are greater and certain components had been isolated
- Two execution for 6 or 10 outgoing ways
- Recognized product with labeling: one label on base and a one on the plate
- Up to 800A
- 4 mounting plate dimensions
- Outgoing T1 single pole and T1, T2, T3, T4 and T5 three poles using the plug-in bases

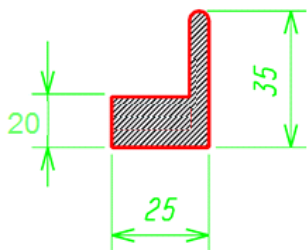
# System pro *E* power Panelboard ArTu PB busbar system



250/400A – I<sub>cw</sub> 35kA



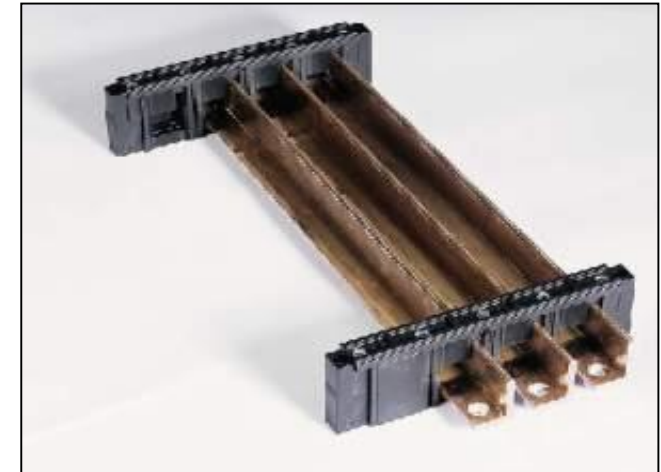
630/800A – I<sub>cw</sub> 50kA



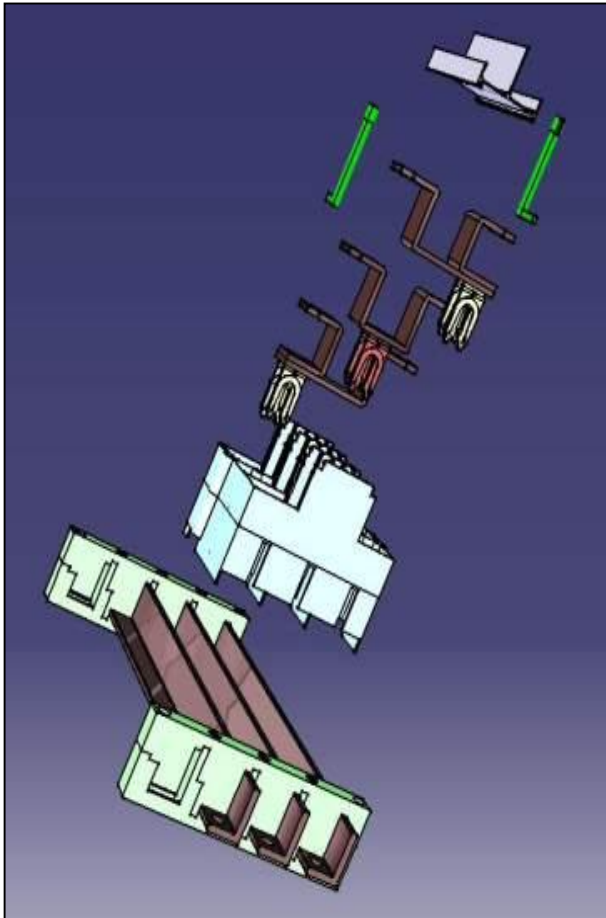
1250A – I<sub>cw</sub> 65kA

## Busbar system

- Universal busbars holder for: I<sub>n</sub> = 250 / 400 / 630 / 800 / 1250 A
- Copper
- 3/4 poles

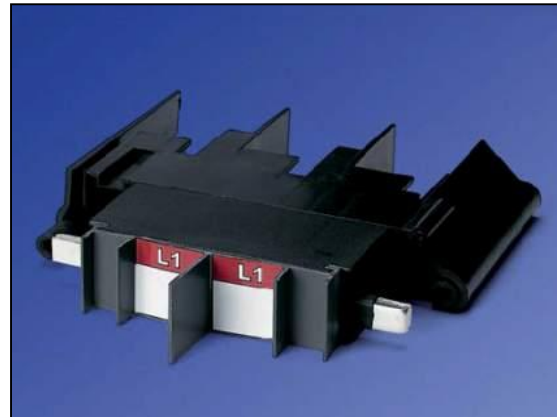
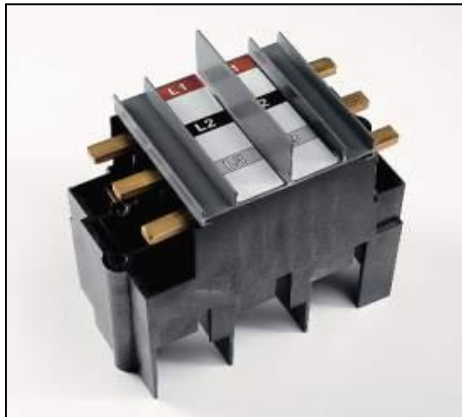


# System pro *E* power Panelboard ArTu PB plug-in connection base

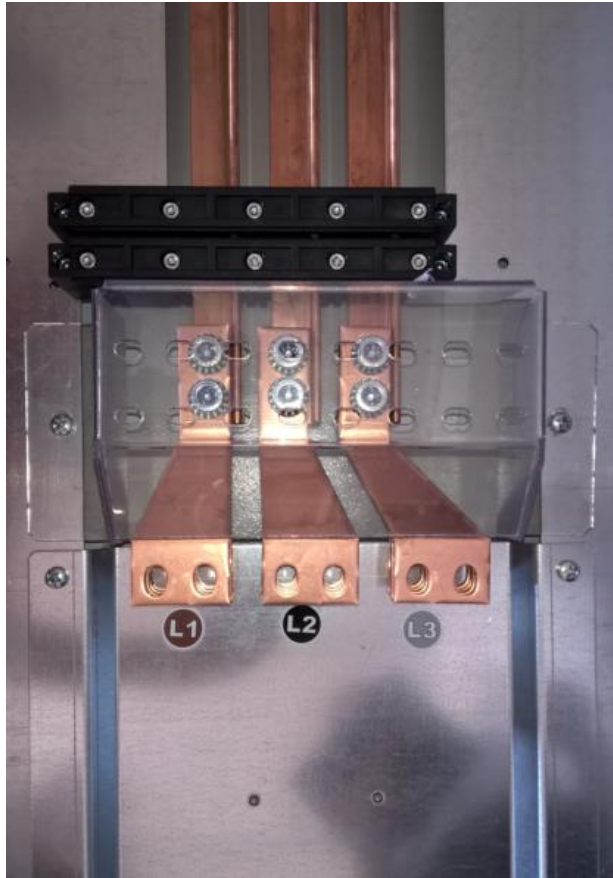


## Components of plug-in base

- Dimensions of the plug-in base is equivalent to the breaker
- Possibility to mount equal size of CBs on the left and right side of the principal busbar system



# System pro *E* power Panelboard ArTu PB incoming connection kit



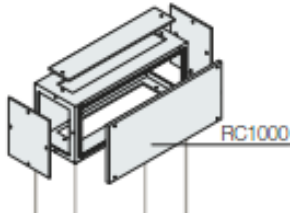
## Incoming options

- MCCB connection kit for T3, XT3, T5 400A, T5 630A, T6 800A, T7 1250A
- Direct connection kit for 400, 800, 1250 busbar rating



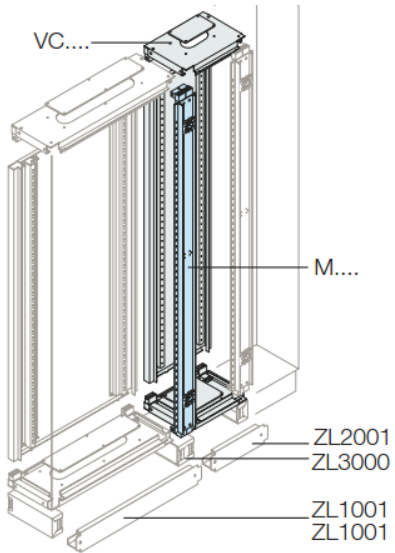


# System pro E power Panelboard ArTu PB accessories



## Accessories

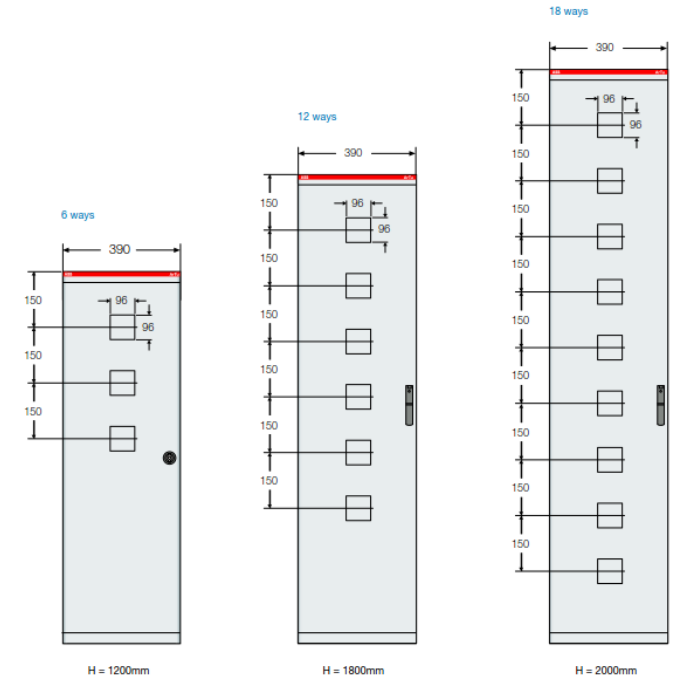
- Glazed door IP43
- Plinth 100mm
- Top/bottom extension module
- Metering chamber with side by side kit included
- External cable container (ArTu L structure)
- Busbar's shroud for the empty space (SH630)
- Covers for the empty connections of the plug-in base (MODT...)



SH630

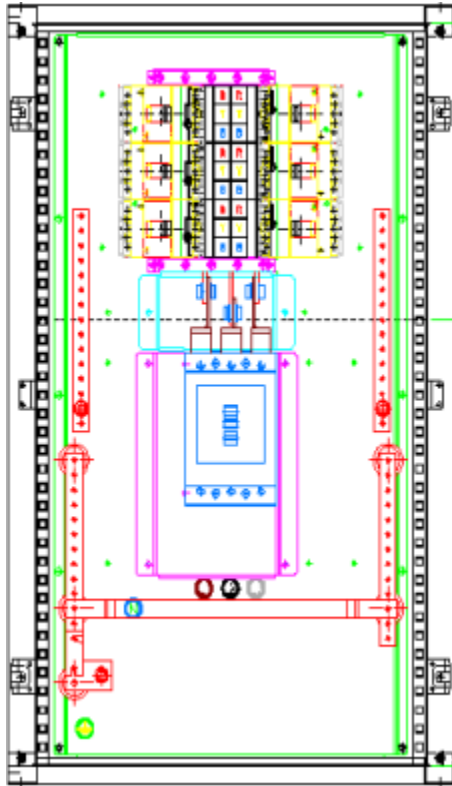


MODT...



# System pro *E* power Panelboard

## ArTu PB example



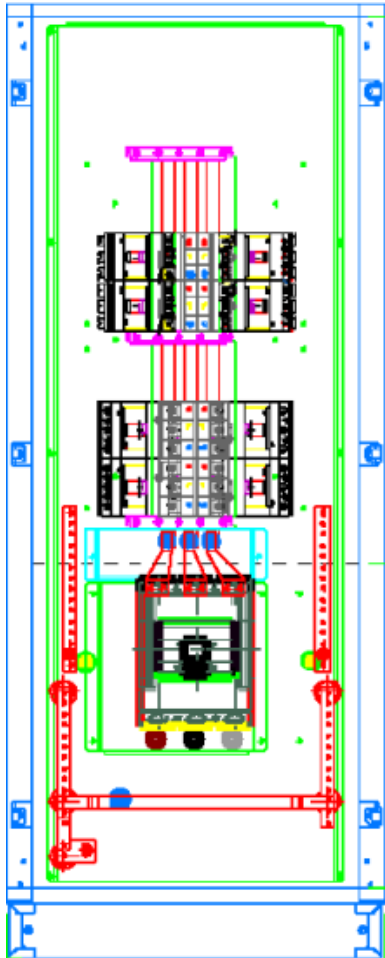
### Panelboard

- **1 - 640T1PB3MD** – Panelboard, 400A 3 pole busbar system, 6 of T1-XT1 outgoing
- **1 - 400T53P** – MCCB connection kit
- **1 - P6X6T5** – Inner door

Ways	Copper Rating	MCCB Type		3 Pole	Dimensions [mm]	4 Pole	Dimensions [mm]
6	400A	T1-XT1 outgoing	160A	640T1PB3MD	1250x690x240	640T1PB4	1250x690x240
6	400A	T3-XT3 outgoing	250A	640T3PB3MD	1250x690x240	640T3PB4	1450x690x240
6	800A	T3-XT3 outgoing	250A	680T3PB3MD	1250x690x240	680T3PB4	1450x690x240
12	400A	T1-XT1 outgoing	160A	124T1PB3MD	1650x690x240	124T1PB4	1650x690x240
12	400A	T3-XT3 outgoing	250A	124T3PB3MD	1650x690x240	124T3PB4	1850x690x240
12	800A	T1-XT1 outgoing	160A	128T1PB3MD	1650x690x240	128T1PB4	1650x690x240
12	800A	T3-XT3 outgoing	250A	128T3PB3MD	1650x690x240	128T3PB4	1850x690x240
18	400A	T1-XT1 outgoing	160A	184T1PB3MD	2050x690x240	184T1PB4	2050x690x240
18	800A	T1-XT1 outgoing	160A	188T1PB3MD	2050x690x240	188T1PB4	2050x690x240
18*	800A	T3-XT3 outgoing	250A	188T3PB3MD	2050x690x240	188T3PB4	2050x690x240

# System pro E power Panelboard

## ArTu PB example



### Custom Panelboard

- **1 - CU128PB3MD** – Custom Panelboard, 800A 3 pole busbar system, 12 outgoing ways of T1 single pole - T1 - T2 - T3 - XT1 - XT3
- **1 - 800T63P** – MCCB connection kit 800A
- **1 - P6X6T6** – Inner door
- **2 - PLT33P** – Plug-in connection base for XT3 three pole
- **2 - PLT13P** – Plug-in connection base for XT1 three pole
- **1 - SH630** – Busbar shroud 630mm long 3 pcs.
- **1 - ZL1000** – Plinth corner elements H=100mm for structure 2 pcs.
- **1 - ZL1001** – Plinth flanges 2 pcs.

Ways	6		12		16		18	
No. poles	3	4	3	4	3	3	4	4
Usable copper [d=mm]	315	420	315	420	315	315	420	420
Usable copper [d1=mm]	-	-	-	-	280	315	280	280
Code	400A	CU640PB3MD	-	CU124PB3MD	-	CU184PB3MD	-	-
	800A	CU680PB3MD	CU680PB4	CU128PB3MD	CU128PB4	CU188PB3MD	CU188PB4	-
	1250A	-	-	-	-	CU12504T5PB3MD	-	-

# System pro E power Panelboard ...more information

HOME • OFFERINGS • LOW VOLTAGE PRODUCTS • ENCLOSURES • SYSTEM PRO E POWER • ARTU PB

GLOBAL SITE Power and productivity for a better world™ ABB

## ArTu Panelboard

Electrify your power plant in an instant

ArTu PB Panelboard is a simple and quick mounted power distribution panel up to 1250A. This board's system allows to perform quick electro-montage of a switchgear directly on the power plant almost in instant out of few components. It makes this product attractive to sell maintaining the stock with ease.

Particular feature of this board is a high security level of the service personal for such kind of compact distribution segment. Simple and quick maintenance without long-term blackout hours and no way to get hit by live parts are the additional positive features.

The fact, that it does not require assembler to perform any additional tests, because of the high-level panels' readiness, evokes attractiveness of the offer. In few words, installer should only implement into electrical network already factory pre-made switchgear and fit it with outgoing MCCB feeders prescribed by designer.

Panelboard distribution panel is tested according to IEC 60439-1 / 61439-1-2 and UL67, has a conformity certificates of LOVAG/ACAE and UL homologation.

- Rated service voltage - Ue up to 690 V;
- Rated insulation voltage - Ui up to 1000 V;
- Rated impulse withstand voltage - Uimp 8 kV;
- Rated short-circuit short-time Withstand current - Icw up to 65 kA;
- Rated short-circuit peak current - Ipk up to 110 kA;
- Degree of protection - IP43;
- Compatibility with 1/3/4 poles T1-XT1, T3-XT3, T4, T5, T6, T7 MCCBs;
- Option with or without incoming breaker.

Are you looking for support or purchase information?  
Contact us

ArTu PB Panelboard | ArTu PB Custom Panelboard | ArTu PB Pan Assembly

© Copyright 2015 ABB | Provider information/impressum | Cookie and Privacy Policy

## Available public sources

- **Power distribution systems Web page** → [Link](#)
- **System pro E power Panelboard Web page** → [Link](#)

(for more information use Download a document section)

- **Technical catalogue** → [Link](#)
- **Instruction handbook** → [Link](#)
- **Product overview** → [Link](#)

Power and productivity  
for a better world™

