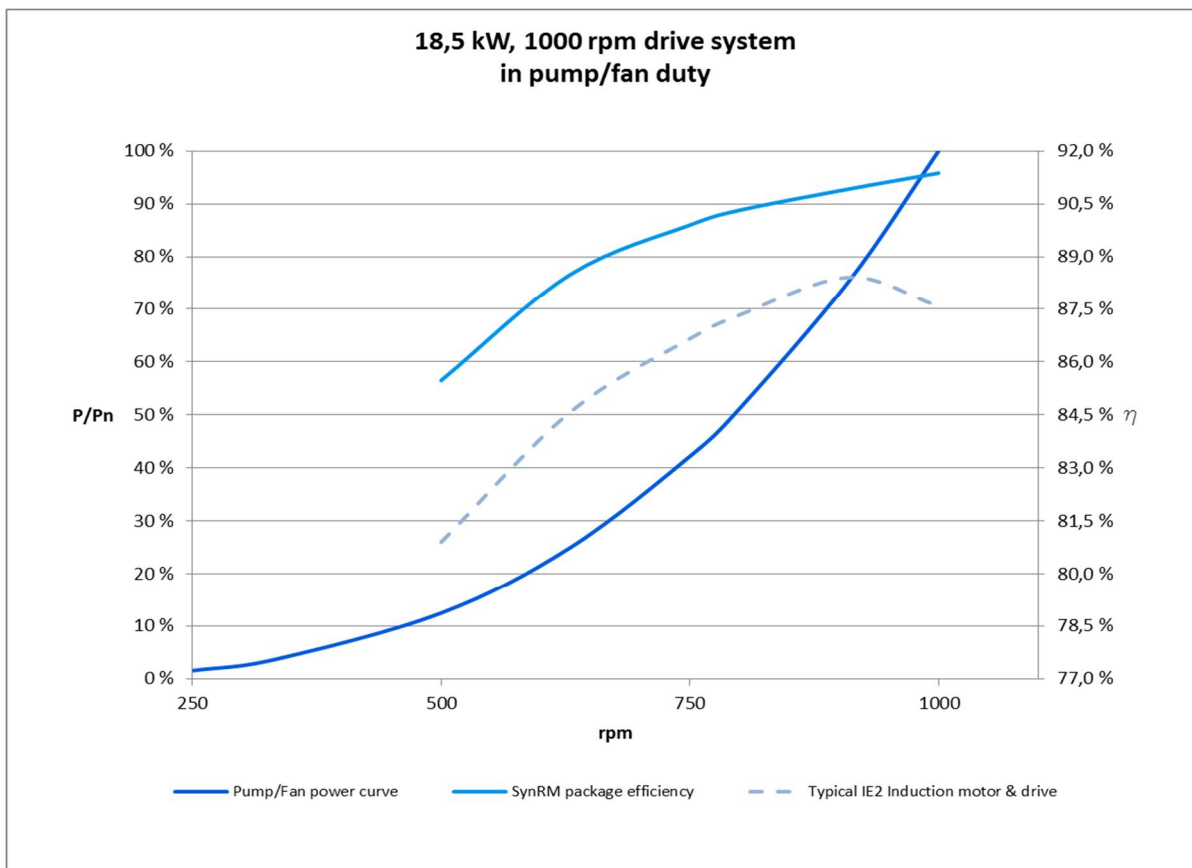


Manufacturer's statement

ACS880-01 and IE4 SynRM motor package efficiency

Drive: ACS880-01-043A-3

Motor: M3BL 200MLA, 3GBL202104-ASC, P_n 18.5 kW, 1000 rpm



Speed	Speed rpm	P/P _n	Package efficiency
50 %**	500	13 %**	85.5 %
63 %	630	25 %	88.5 %
75 %	750	42 %	89.9 %
80 %	800	51 %	90.3 %
91 %	910	75 %	90.9 %
100 %**	1000	100 %**	91.4 %*

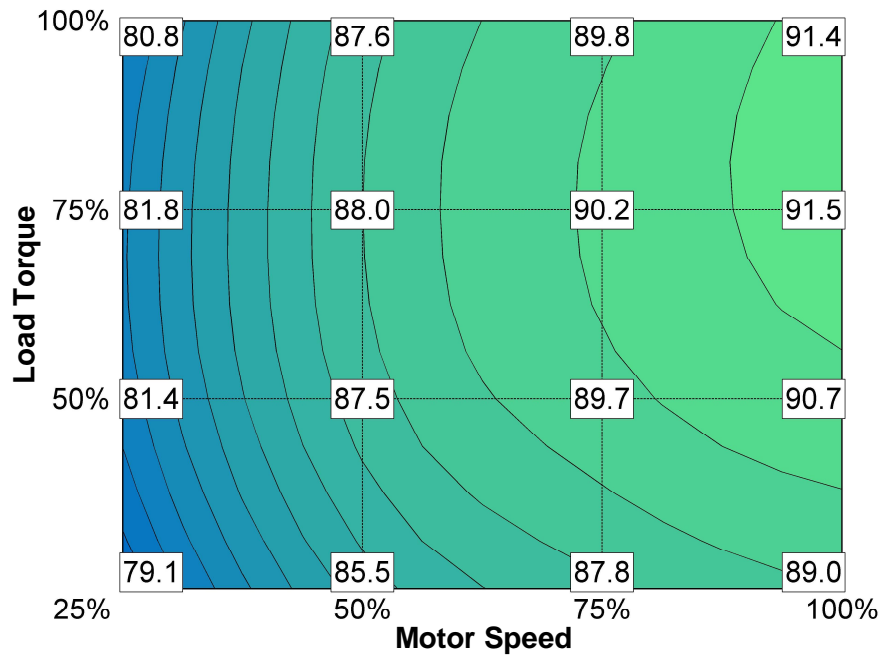
*Estimated tolerance according to IEC 60034-1:

≤150kW: 0.15 x (100 - package efficiency (%)) at the nominal point

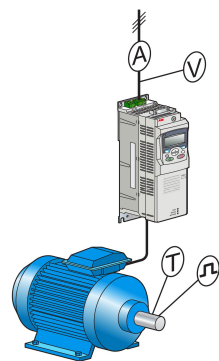
>150kW: 0.10 x (100 - package efficiency (%)) at the nominal point

**Measurement points according to EN 50598-2

Package efficiency [%] for applications with other load characteristics:



Points of measurement



Electrical Power P1

Mechanical Power P2

Efficiency $\eta = P2/P1$

Efficiency measurements were made at:

	ABB verification laboratory, Vaasa	X	ABB verification laboratory, Västerås
	ABB verification laboratory, Helsinki		