

NOMENCLATURE

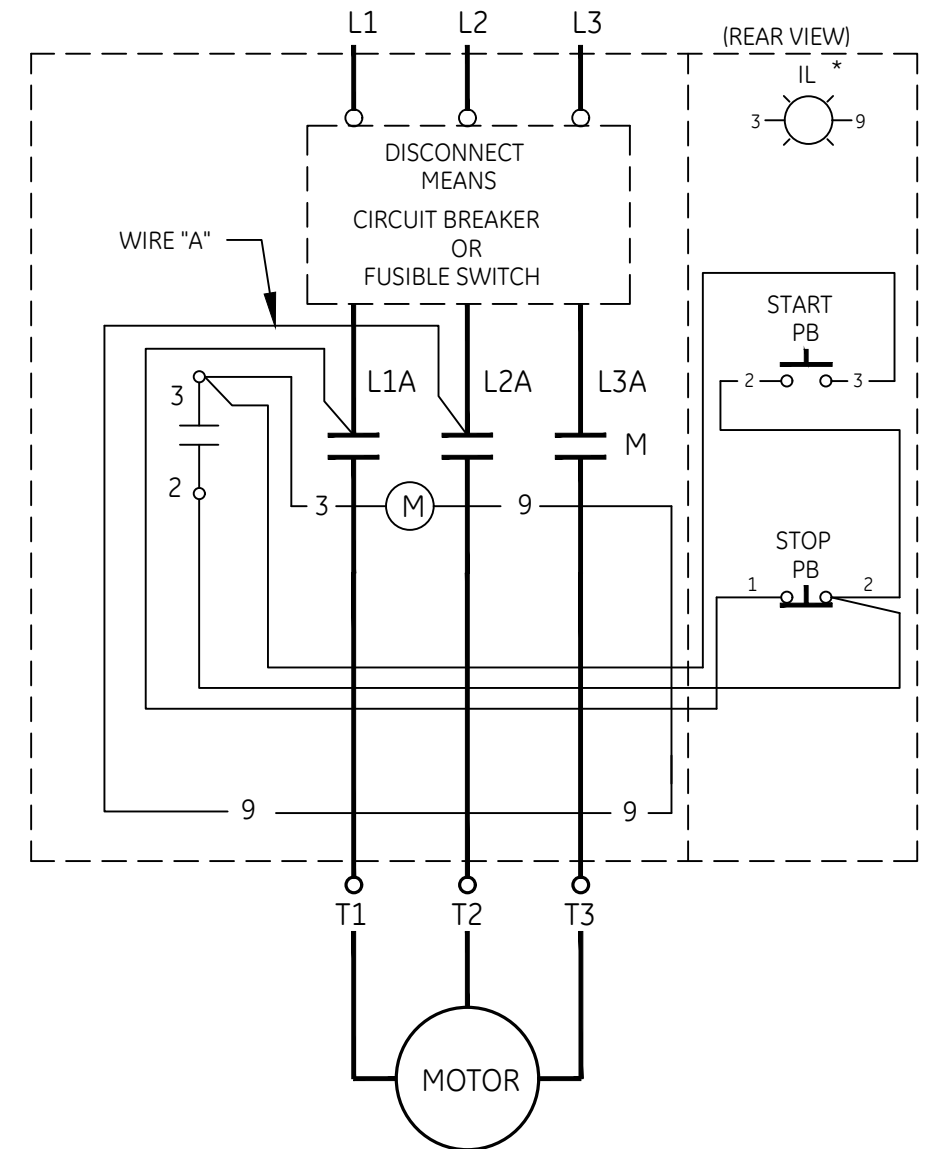
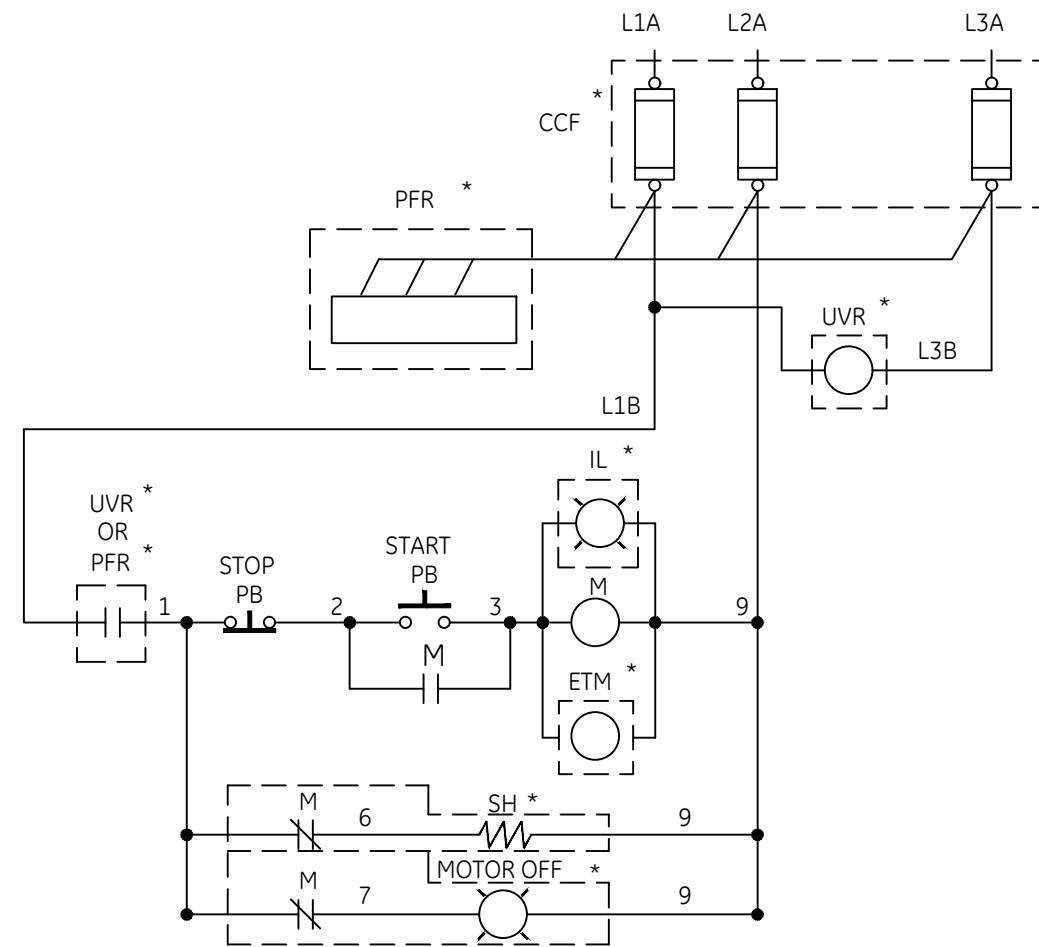
- CCF CONTROL CIRCUIT FUSING
- CPT CONTROL POWER TRANSFORMER
- IL INDICATING LIGHT
- M MOTOR CONTACTOR
- PB PUSHBUTTON
- PFR PHASE FAILURE RELAY
- UVR UNDERVOLTAGE RELAY
- * IF USED
- ETM ELAPSED TIME METER
- SH SPACE HEATER
- G GREEN
- R RED

NOTE: REFER TO THE NATIONAL ELECTRICAL CODE. ADDITIONAL CONTROL CIRCUIT OVER-CURRENT PROTECTION MAY BE REQUIRED.

** FOR THREE PHASE USE 3 HEATERS.
 FOR SINGLE PHASE USE 2 HEATERS AND
 CONNECT LINES TO L1 AND L3. LOAD TO
 T1 AND T3. MOVE WIRE "A" FROM L2A TO L3A.

SIZE	LINE	CR340	CR341
1	AS MARKED	20 LB-IN	35 LB-IN
2	AS MARKED	50 LB-IN	50 LB-IN
3	AS MARKED	150 LB-IN	50 LB-IN
4	AS MARKED	200 LB-IN	275 LB-IN
5	AS MARKED	300 LB-IN	AS MARKED

USE 75°C COPPER CONDUCTORS ONLY, FOR FIELD WIRING. TORQUE LINE AND LOAD TERMINALS AS SHOWN AT RIGHT:



ABB

**WIRING DIAGRAM
 PUMP PANEL (CR340, 341)**

THIRD ANGLE	SHEET#	DWG NO.	DATE	REV
	1 of 1	55-536634	03/21	05