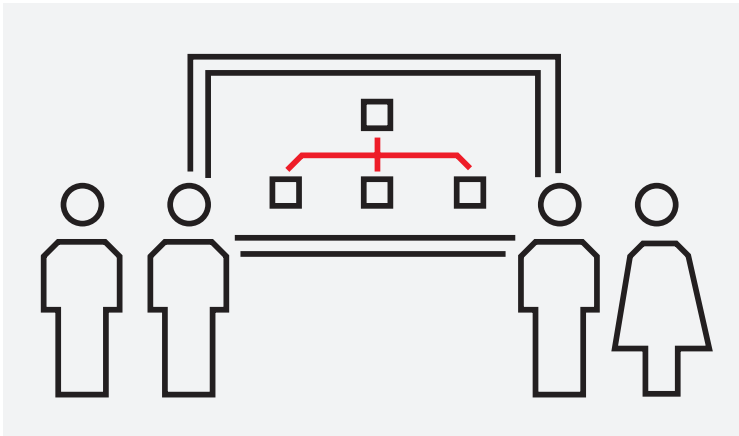


COURSE DESCRIPTION

S311

SD Series hardware configuration



The goal of this course is to become familiar with the Symphony Plus SD Series architecture and related hardware components.

Participant profile

This training is targeted to system and application engineers, commissioning and maintenance personnel, service engineers and system integrators.

It is also a prerequisite for students that are planning to attend the S312 course.

Prerequisites

Students shall have a basic knowledge of process control fundamentals. They should also have a basic understanding of Microsoft Windows operating systems.

Learning objectives

Upon completion of this course, the participants will be able to:

- Recognize the Symphony Plus system architecture and the function of the different components
- Establish SD Series network communication
- Recognize features and functions of SD Series controller family.
- Set Up SD Series controllers and load new firmware
- Understand the basics of S+ Engineering for control logic configuration
- Learn main Function Code categories
- Recognize features and functions of SD Series I/O modules
- Configure SD Series I/O Modules

Topics

- Symphony Plus system architecture
- SD Series plant network (PN800)
- SD Series controllers
- SD Series controllers' firmware
- S+ Engineering Composer Harmony
- Control logic Function Codes categories
- SD Series I/O modules
- SD Series communication Interfaces
- Controllers online configuration

Course type and methods

This is an instructor led course with interactive classroom discussions and associated lab exercises. Approximately 50% of the course is hands-on lab activities.

Duration

4 1/2 days

Agenda

Day 1	Day 2	Day 3	Day 4	Day 5
Course overview	SD Series controllers	S+ Engineering Composer Harmony	SD Series I/O modules	Controllers online configuration
Symphony Plus system architecture	SD Series controllers' firmware	Function Codes categories	SD Series communication interfaces	Hands-on lab: Exercises
SD Series plant network	Hands-on lab: Exercises	Hands-on lab: Exercises	Hands-on lab: Exercises	Questions & Answers
Hands-on lab: Exercises				

ABB

Power Generation Training

Email: IT-powergeneration.training@abb.com

The information contained in this document is for general information purposes only. While ABB strives to keep the information up to date and correct, it makes no representations or warranties of any kind, express or implied, about the completeness, accuracy, reliability, suitability or availability with respect to the

information, products, services, or related graphics contained in the document for any purpose. Any reliance placed on such information is therefore strictly at your own risk. ABB reserves the right to discontinue any product or service at any time.
© Copyright 2018 ABB. All rights reserved.