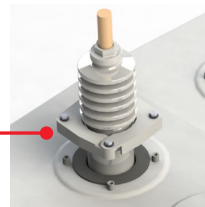
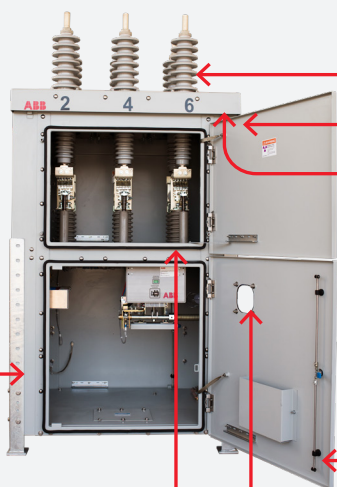


DISTRIBUTION SOLUTIONS

R-MAG[®] magnetically actuated dead tank outdoor vacuum circuit breaker

NEMA 4 housing for 15, 27 and 38 kV units

The NEMA 4 housing for the R-MAG outdoor circuit breaker is ready to withstand the most severe weather conditions — sleet, snow, storms and wind-driven rain impacting the housing at rates of more than 60 gal./min. from any direction.



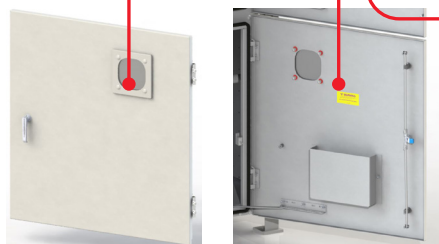
Aerospace-grade bushing gasket

- Bushing-to-roof interface is secured by a special aerospace-grade UV-resistant gasket



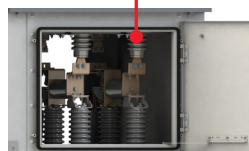
Every corner is sealed

- External self-sealing bolts help prevent water ingress



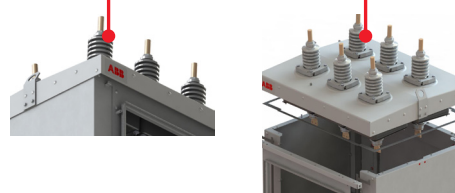
Enhanced door coverage

- Three-point door latch helps ensure a smooth and uniform door fit
- Door gasket runs over the door edge smoothly for secure sealing
- Enhanced position indicator window design prevents water ingress



New door gasket design provides unparalleled sealing

- More robust gasket is better positioned to help prevent gaps and ensure superior sealing



Superior rainwater protection

- Advanced roof-to-wall joint helps ensure reliable sealing
- Roof overhang limits door exposure to rainwater
- No need for vents on the HV compartment cover for any rating

Note: NEMA 4 enclosure is available in stainless steel. Contact your ABB representative for more information.

ABB Inc.
305 Gregson Drive
Cary, NC 27511

abb.com/mediumvoltage

We reserve the right to make technical changes or modify the contents of this document without prior notice. With regard to purchase orders, the agreed particulars shall prevail. ABB Inc. does not accept any responsibility whatsoever for potential errors or possible lack of information in this document.

We reserve all rights in this document and in the subject matter and illustrations contained therein. Any reproduction, disclosure to third parties or utilization of its contents—in whole or in parts—is forbidden without prior written consent of ABB Inc. Copyright© 2024 ABB. All rights reserved.