

Industrial Plugs and Sockets 63A and 125A

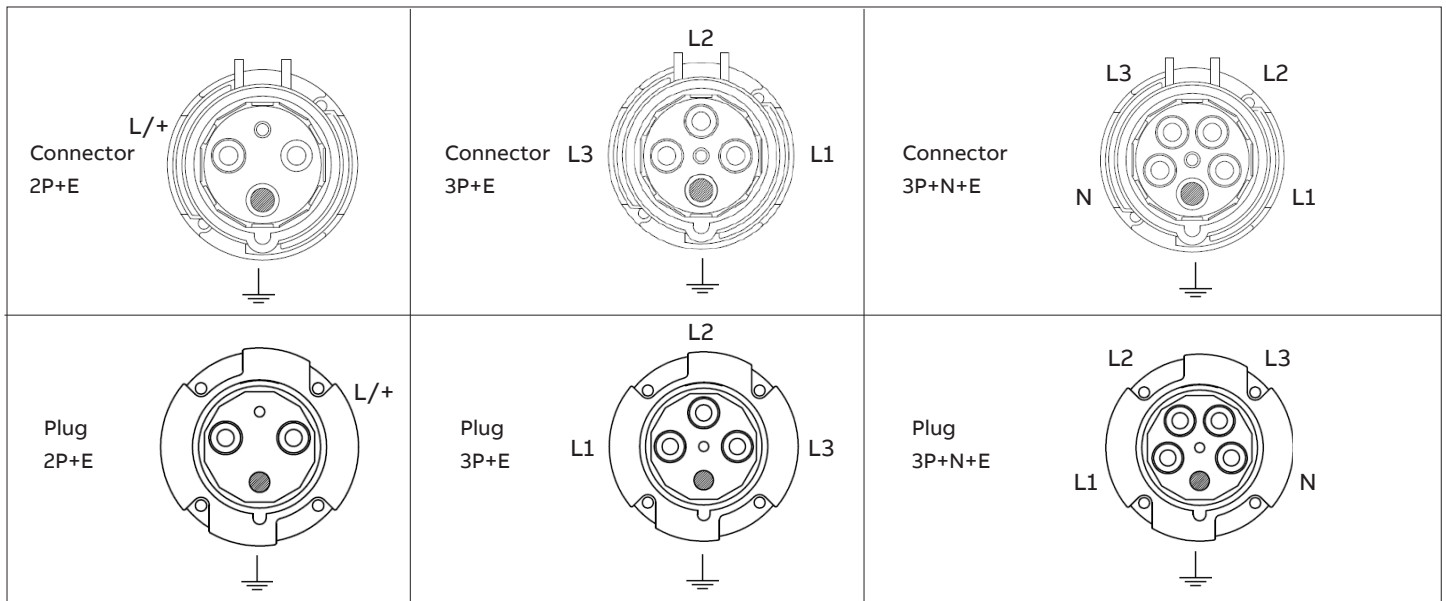
WARNINGS & CAUTIONS:

- TO AVOID FIRE, SHOCK, OR DEATH, TURN OFF POWER AT CIRCUIT BREAKER OR FUSE. TEST THAT POWER IS OFF BEFORE SERVICING OR WIRING!
- TO BE INSTALLED AND/OR USED IN ACCORDANCE WITH ELECTRICAL CODES AND REGULATIONS (INCLUDING NEC/CEC, AS APPLICABLE).
- IF YOU ARE NOT SURE ABOUT ANY PART OF THESE INSTRUCTIONS, CONSULT AN ELECTRICIAN.
- RECEPTACLES AND INLETS: MOUNTING MEANS NOT GROUNDED. GROUNDING WIRE REQUIRED!
- USE THIS DEVICE ONLY WITH COPPER OR COPPER CLAD WIRE.

TO INSTALL:

1. Loosen the four assembly screws on the outside flange.
2. Remove the device's body.
3. To remove the two halves of the external cable clamp, unscrew the two external clamp screws.
4. Unscrew the grommet cap screws to remove the grommet cap from the housing.
5. Slide the grommet cap onto the cable.
6. Remove enough inner layers of the Neoprene grommet to achieve a snug fit. Slide grommet onto the cable with attached side towards the grommet cap.
7. Slide the housing onto the cable.
8. Cut the cable cleanly. Strip the insulation . Do not tin conductors!
9. Back out the terminal screws but do not remove them completely.
10. Back out the clamp screws but do not remove.
11. Feed the cable through the internal clamp assembly (if used) and insert the conductors into the proper terminal. Tighten the terminal screws and internal cable clamp screws (if used)
12. Reconnect the body with the housing.
13. Carefully slide the grommet and grommet cap down the cable and into the housing. Press the grommet into the housing and then alternately tighten the grommet cap screws until the grommet cap is flush with the housing.

INSTALLATION IS COMPLETE.



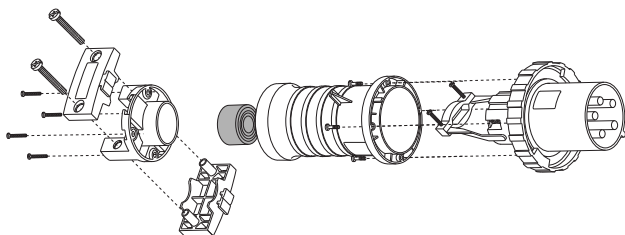
Tightening guide

Device	Terminal screws Nm	Internal cable clamp screws Nm	Assembly screws Nm
63 A	3.5	1.5	1.2
125 A	5.6	2.0	2.0

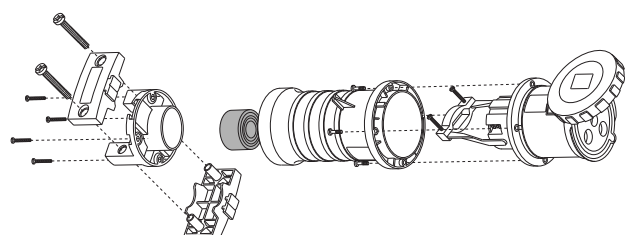
Wire sizes

Device	Cable dimension mm	Cable Cross-Section mm ²
63 A	17 - 35	6 - 16
125 A	24 - 48	16 - 50

* Recommended Screw Driver PH2



Plug IP67



Connector IP67

To install panel mounted Outlets and Inlets

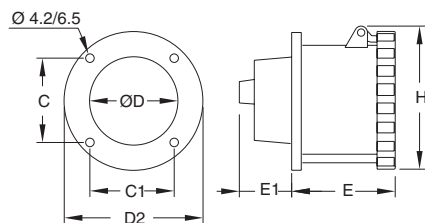
CAUTION: THE MOUNTING MEANS IS NOT GROUNDED. A GROUNDING WIRE CONNECTION IS NEEDED!

1. For panel mounting, select the mounting site. Prepare the installation site as noted in the Drilling Plan.
2. Cut the cable cleanly. Strip the insulation
DO NOT TIN THE CONDUCTORS! FOR FLUSH-MOUNTED CONDUIT - CONNECTED DEVICES, USE NONMETALLIC CONDUIT ONLY.
3. Back out terminal screws but do not remove completely.
4. Ensure gasket is mounted evenly in place.
5. Insert the conductors into the proper terminals
6. Make sure the gasket holes line up with the mounting holes and screws.
7. Mount the device using the mounting screws.

INSTALLATION IS COMPLETE.

Socket-outlets, panel mounting, type RU..W

Type	C	C1	D	D2	E	E1	H
263-463RU..W	61	61	70	104	89	48	111
2125-4125RU..W	71	71	88	115	100	58	122



Inlets, panel mounting, type BU..W

Type	B	C	D	D2	E3	E4
263-463BU..W	112	61	70	98	50	80
2125-4125BU..W	122	71	81	118	56	89

