

ASPECT® v3.08.01

Summary

ASPECT software has been updated to include various enhancements and general usability improvements.

Features

SECURITY ENHANCEMENTS

- Remediation of high priority PEN test guideline items to further harden ASPECT’s security surface.
- nodeJS version upgraded for NEXUS Series and ASPECT-Enterprise targets.
- TLSv1.2 is now the default value for TLS Versions in configuration of SMTP emailers (new and existing).
- Process for changing default passwords has been streamlined.
- Ports 7226/8226 no longer have to be opened for mobile devices.
- An error is reported if administrative authentication fails.
- ASPECT Event History Exports are now working when the security model is LDAP.
- ASPECT Supervisor (B-OWS) browser caching has been enabled to speed up browser response time.
- Global schedule edit permissions for Schedule Groups and Schedules now work as expected.

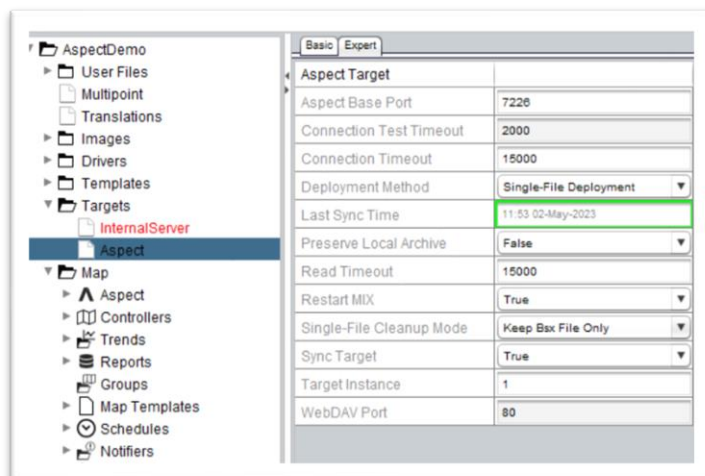
GENERAL USABILITY

DEPLOYMENT IMPROVEMENTS

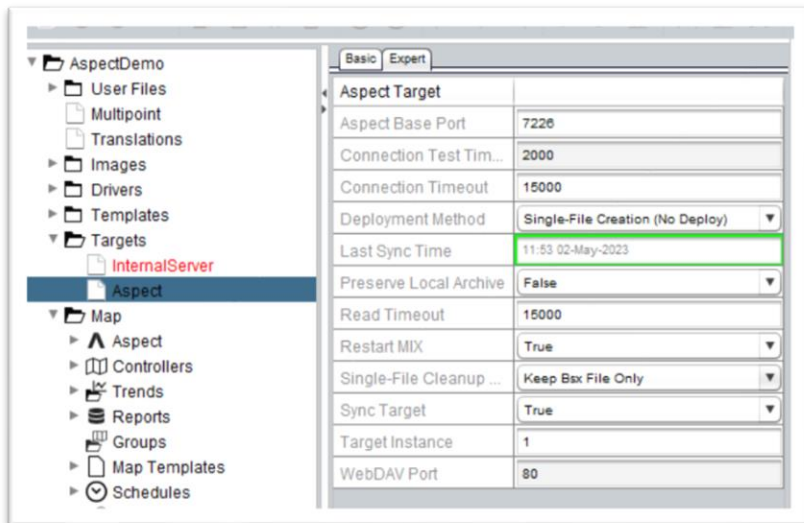
The following deployment improvements have been made in ASPECT v3.08.01:

- Packaging of the project into a single file for automated deployment to a target (should be less error-prone than current deployment methods).

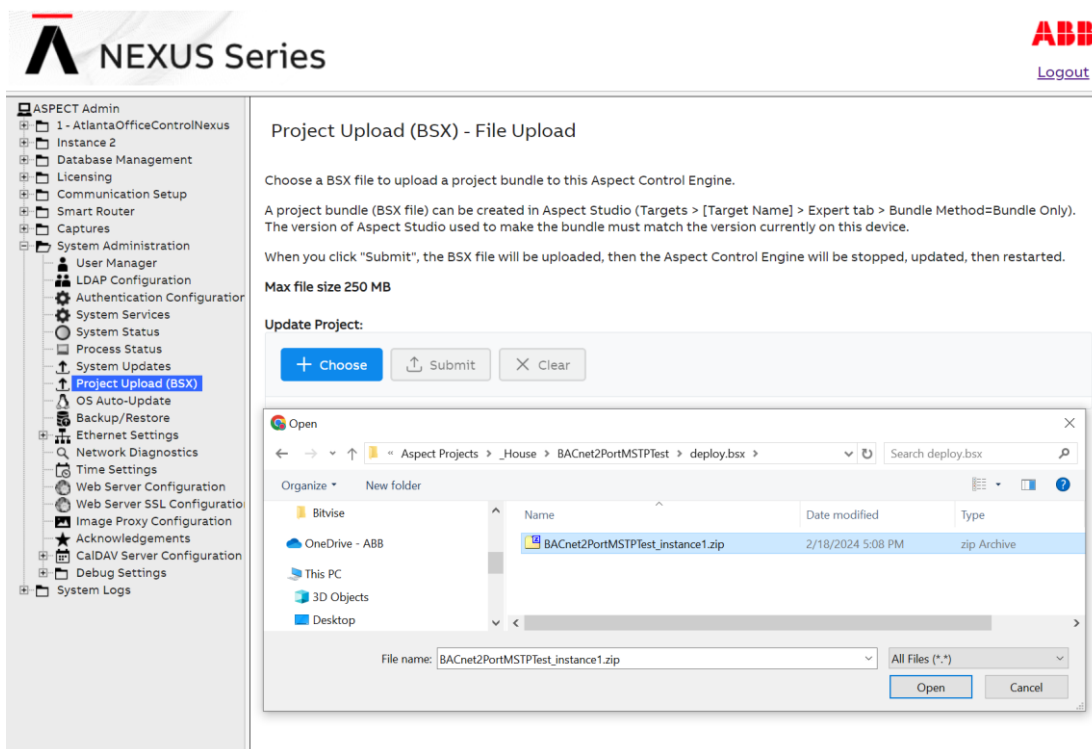
To deploy a project in this way, select the Single-File Deployment method:



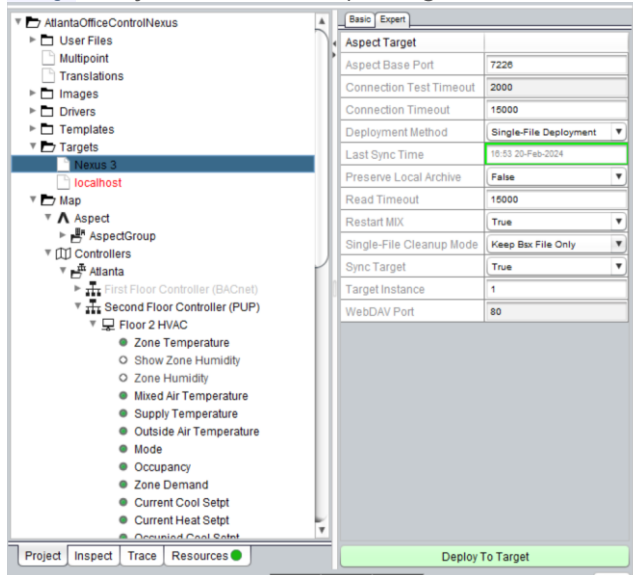
- Packaging of the project into a single file for manual upload to an ASPECT target (used as a backup project deployment method in challenging network environments).
To create a single file that can be manually uploaded use the **Single-File Creation (No Deploy)** method:



To upload single-file project installer use the **Project Upload (BSX) – File Upload** page in the Administration UI :



- The **Deploy To Target** button now displays a color to represent the status of the selected Target as follows:
 - Red** = ASPECT-Studio cannot connect to the Target,
 - Green** = Target is available and ready to receive a deployment,
 - Orange** = may indicate for example Target is reachable but credentials are invalid.



- Progress indicator for single-file upload
- Deployment over HTTPS (e.g. to port 443 or 8226/8227)

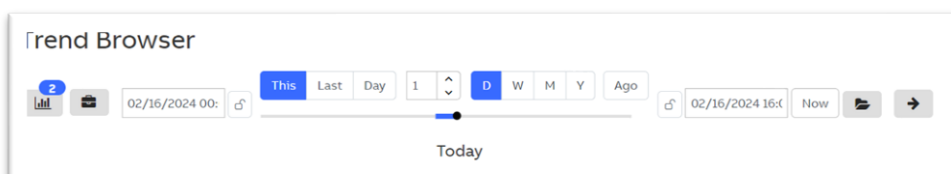
OTHER USABILITY IMPROVEMENTS INCLUDE:

- Links from graphic floorplans now work as expected when **scalable graphics** are enabled.
- Trend viewing has been augmented to include an intuitive method for querying, selecting and saving trend views in addition to ASPECT's legacy AdHOC trend viewer tool.

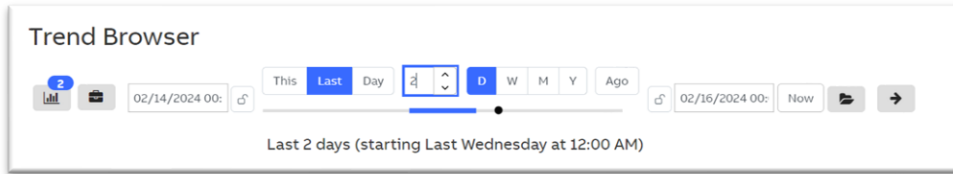


For example, here are some samples of how to use the intuitive **Query Builder Selector**:

Select button **This** and button **D** to query for trend values for “Today”



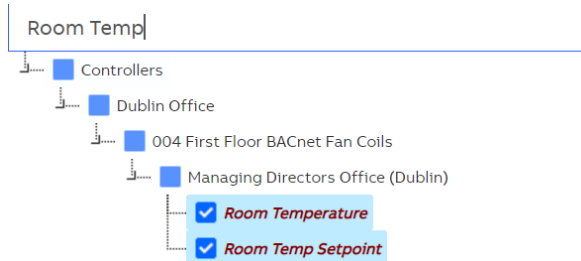
Last 2 Days - select button **Last** and the number **2** and button **D**



- This Week - select button **This** and button **W**.



- To select specific Trends - select the **Trend Selector** button  and use the text box to filter the Trend Tree for the desired values as shown below:



- **Building Analyzer Push** now automatically accepts certificates from known authorities.
- Deployment reliability has been improved for **ASPECT** targets configured for the **LDAP** security model.
- Project upload logs are now available on device when manual upload is carried out.
- **Offline Alarms** in **ASPECT** now respect and persist change of **Priority**.
- **ASPECT** web interface now provides meaningful messages if an error condition is active.
- Data validators have been added to insure **device address** / **device id** are valid in the **Network Device** configuration
- Resolved **Graphic zoom in** / **zoom out** issues on **Scalable Graphic** images.
- Editable time datatype elements now render times correctly after time modification.
- Editable time datatype elements now respect edit masks of **HH:mm** and **00:00**.
- The **Number/Date/Time Format** option is now respected when displaying **Ghost Point** values in a deployed project.
- Links on the **Trend Graph** now show as expected when launched from an **Annunciator** on a **Graphic**.
- Links on **Annunciator** and **Link** elements overlaid on a **scalable graphic** can now to be selected.
- Detected **IP Address** is now shown on ethernet settings page.
- An option has been added to write core-scaled values back to down to a controller as original non-scaled value.

Customer Impact

All Customers are recommended to update when convenient.

However, Customers should update immediately if affected by the following:

- Any **ASPECT** target is internet facing.
- A project implementation is exhibiting issues rendering scalable graphics with links.
- The Target is operating in any environment where deployments are challenging.
- If the legacy **Ad-Hoc Trend** interface does not meet trend query expectations.