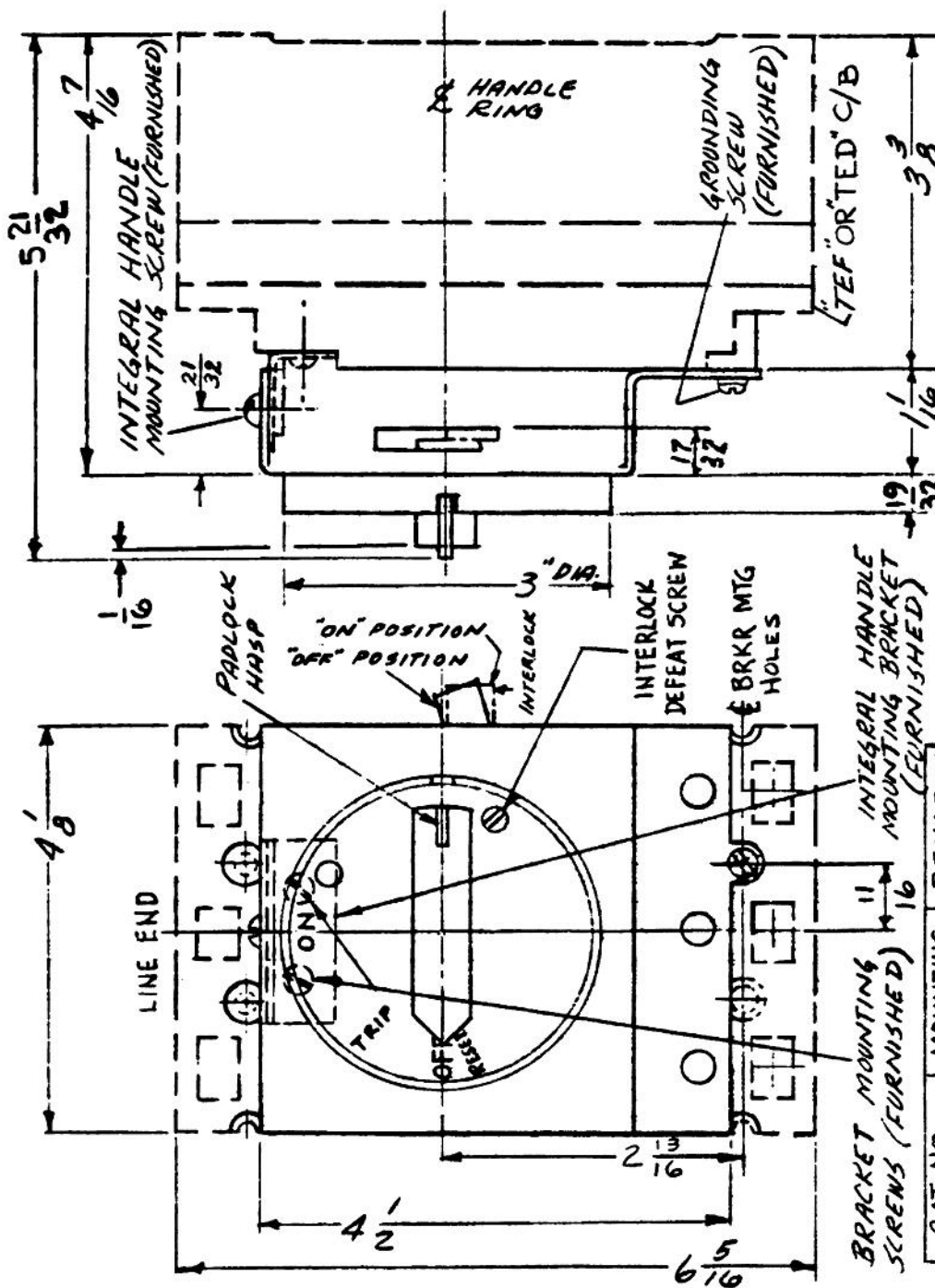


SEE 791A840 SH-2 FOR INTERLOCK AND MOUNTING DETAILS.



NOTE #1 FOR HORIZONTAL MOUNTING (LINE AT LEFT) THE HANDLE ESCUTCHEON AND INDICATING PLATE ARE ROTATED CLOCKWISE 90° FROM SHOWN POSITION. MOUNTING POSITION VARIATIONS MUST BE ORDERED FROM FACTORY. (SEE TABLE)

BRACKET MOUNTING SCREWS (FURNISHED)

CAT. NO.	MOUNTING	REMARKS
TEFK1	VERTICAL	AS SHOWN
TEFK1B	VERTICAL	AS SHOWN
TEFK1H	HORIZONTAL	SEE NOTE #1
TEFK1HB	HORIZONTAL	SEE NOTE #1

**Industrial Solutions** by ABB

**OUTLINE**

FIRST MADE FOR 15-100A TEF OR TED C/B INTEGRAL HANDLE

THIRD ANGLE SHEET 1	DWG NO.	DATE	REV
1 of 1	791A837SH1	05/20	9