
USER GUIDE

MAN0147 rev 3

CXpro^{HD} Installation and Licensing



Style conventions used in this document:

UI Text: Text that represents elements of the UI such as button names, menu options etc. is presented with a grey background and border, in Tahoma font which is traditionally used in Windows UIs. For example:

Ok

Standard Terms (Jargon): Text that is not English Language but instead refers to industry standard concepts such as Strategy, BACnet, or Analog Input is represents in slightly condensed font. For example:

BACnet

Code: Text that represents File paths, Code snippets or text file configuration settings is presented in fixed-width font, with a grey background and border. For example:

```
$config_file = c:\CYLON\settings\config.txt
```

Parameter values: Text that represents values to be entered into UI fields or displayed in dialogs is represented in fixed-width font with a shaded background. For example

10°C

Product Names: Text that represents a product name is represented in bold colored text. For example

INTEGRA™

Company Brand names: Brands that are not product names are represented by bold slightly compressed text:

ABB Active Energy

PC Keyboard keys: Text representing an instruction to press a particular key on the keyboard is enclosed in square brackets and in bold font. For example:

[Ctrl]+[1]

table of contents

1	INTRODUCTION	
2	INSTALLING CXPRO^{HD}	
3	REQUESTING AND APPLYING A LICENCE TO CXPRO^{HD}	
	Requesting a licence.....	10
	When running the application.....	10
	Applying a licence	11

1 Introduction

To use **CXpro^{HD}**, you must

- 1) run the setup program to either install (on a new PC) or upgrade (on an existing engineering PC) the software. This process is described in detail in *Installing CXpro^{HD}* on page 5.
- 2) apply a License to the installed software. If you do not have an existing software license, you can generate a request files during installation, or at any time after installation. Note you must send a generated request file to ABB by email in order to receive a valid license.

2 Installing CXpro^{HD}

Note: to install CXpro^{HD} you must have administrator rights on the PC.

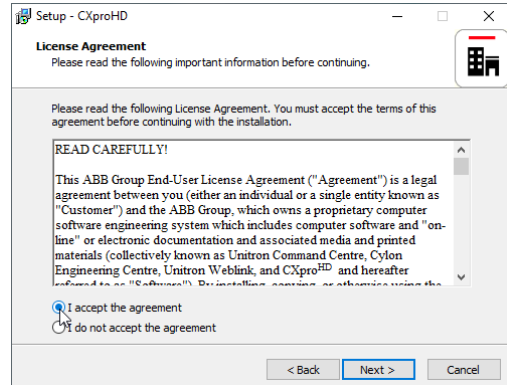
To install CXpro^{HD}, run the program `CXproHD Setup.exe` from the provided USB drive or download:

Name	Date modified	Type	Size
DAO350	27/07/2018 11:00	File folder	
Firmware upgrade utilities	27/07/2018 11:00	File folder	
vcredist_x86	27/07/2018 11:00	File folder	
vcredist_x86_2008	27/07/2018 11:00	File folder	
vcredist_x86_2010	27/07/2018 11:00	File folder	
autorun.inf	19/01/2017 12:50	Setup Information	1 KB
CXpro^{HD} Setup.exe	27/07/2018 03:20	Application	138,322 KB
dotNetFx40_Full_x86_x64.exe	19/01/2017 12:50	Application	49,268 KB
hinstall.exe	21/06/2018 02:12	Application	20,926 KB
lsinit.exe	19/01/2017 12:50	Application	524 KB
Readme.txt	19/01/2017 12:50	Text Document	2 KB
ShelExec.exe	19/01/2017 12:50	Application	19 KB
UnitronFingerprintCollection.exe	19/01/2017 12:50	Application	1,212 KB
UnitronSymbolsLibrarySetup.exe	19/01/2017 12:50	Application	768 KB
WindowsInstaller-KB893803-x86.exe	19/01/2017 12:50	Application	2,525 KB
WindowsXP-KB899418-x86-ENU.exe	19/01/2017 12:50	Application	550 KB

After selecting the language in which to install CXpro^{HD}, click **Next** on the installation screen,



then read and accept the License Agreement



Specify the location into which **CXpro^{HD}** will be installed.

Note: Make sure there are no spaces in the location, and that none of the following characters are used: . ! \$

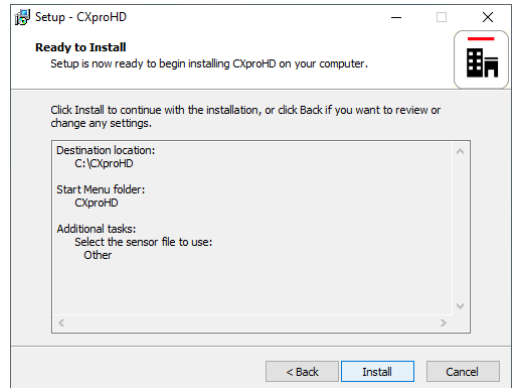
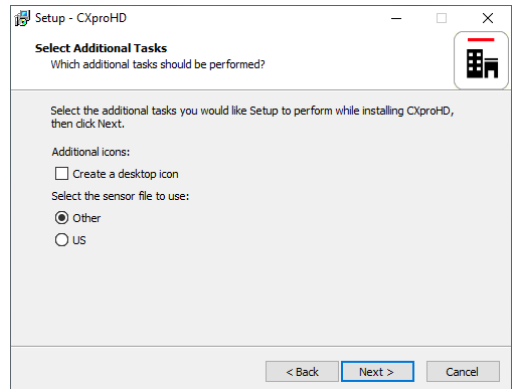
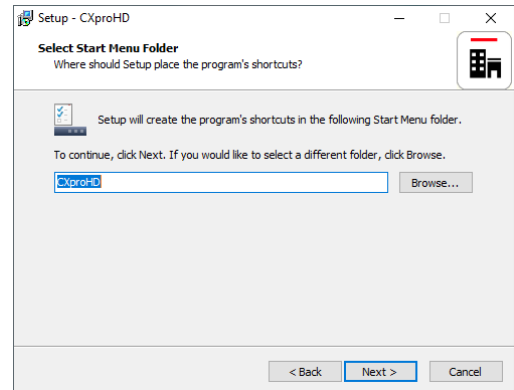
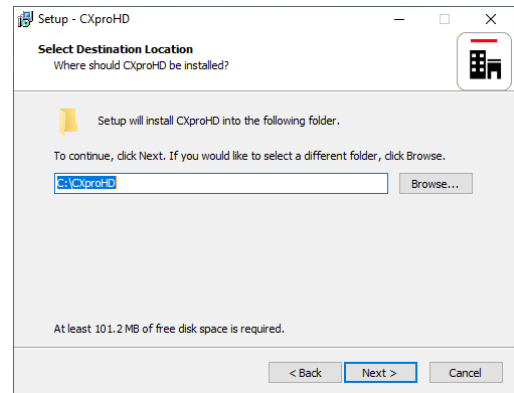
Enter a name for **CXpro^{HD}**'s Windows Program Group.

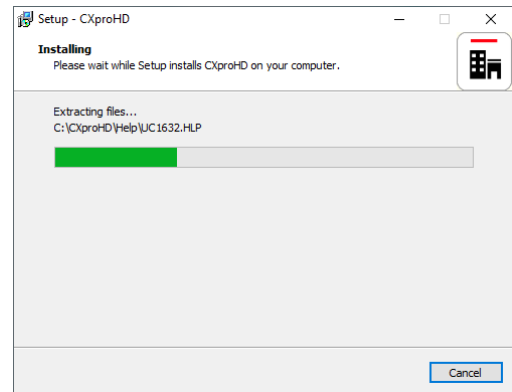
If you would like a Desktop Icon for **CXpro^{HD}**, check the box on the **Select Additional Tasks** dialog.

You can also specify if you want to use US imperial units for sensor readings, or not.

Click **Next**.

Click the **Install** button to start the install process...





When the install process finishes, you will be prompted to configure the BACnet connection settings.

The **PC Device Instance Number** will be set to “-1”. This must be changed to a unique Device Instance Number.

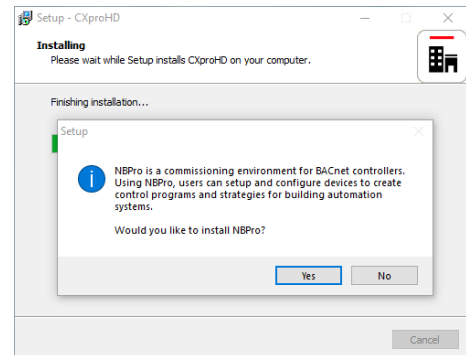
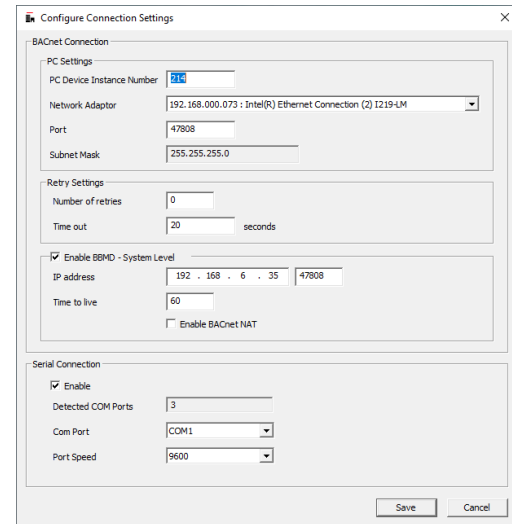
In the **Network Adapter** drop-down list, select one of the PC’s network adapters to be used as the channel for all BACnet communication.

If you wish to connect to a remote BACnet Site, enter that Site’s IP address in the **BBMD settings** section.

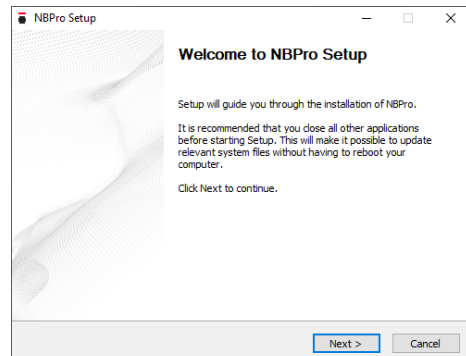
If **CXpro^{HD}** will connect to the BMS Site through a Serial Connection, that connection can be configured in this dialog.

When the **Configure Connection Settings** dialog is complete, click **Save**.

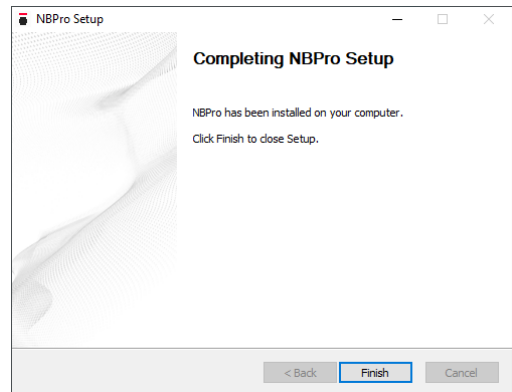
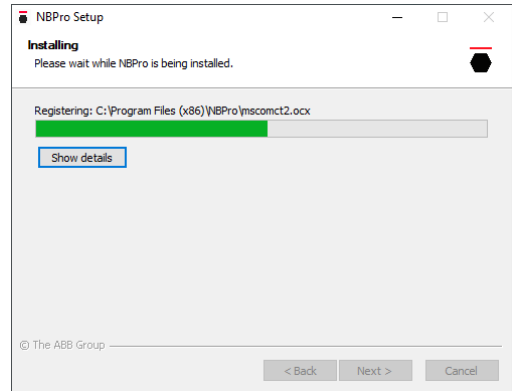
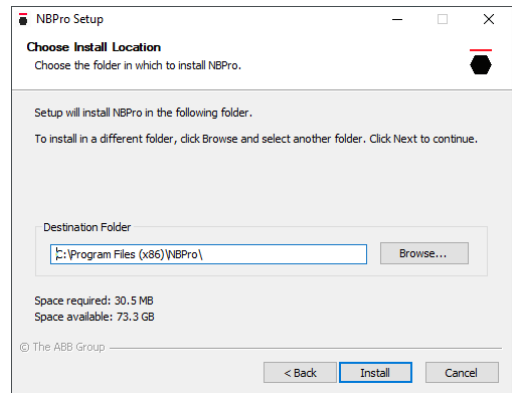
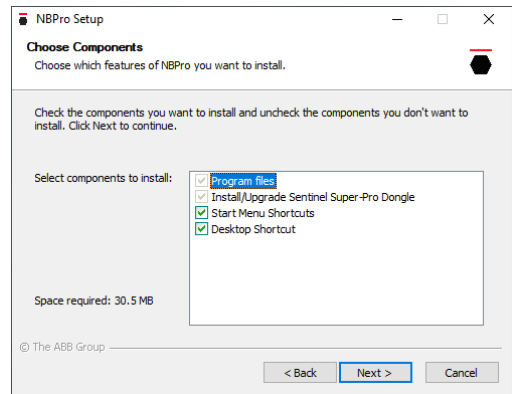
You will be offered the option to install ABB’s BACnet exploration/commissioning utility, **NBpro**.



If you click **Yes**, the **NBpro Setup Wizard** will open:



CXpro^{HD} Installation and Licensing | Installing CXpro^{HD}



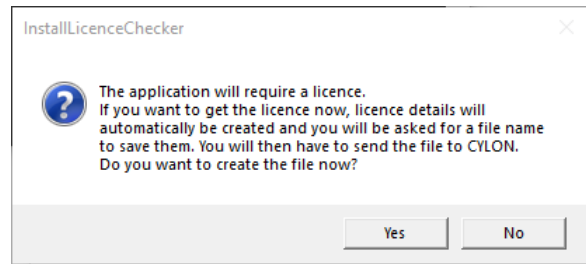
You will be offered the option to generate a licence request file for the PC on which you are installing **CXpro^{HD}**.

You can do this now, or at a later time - see *Requesting and Applying a Licence to CXpro^{HD}* on page 10 for details.

If you have already installed a CXpro^{HD} license on this PC you may skip this step.

If you select **Yes**, then you will be prompted for a filename and location. Save the License request file, and then **email it to Cylon** in order to receive the Software Dongle.

CXpro^{HD} is now installed. If prompted, you may need to restart the PC before using **CXpro^{HD}**.



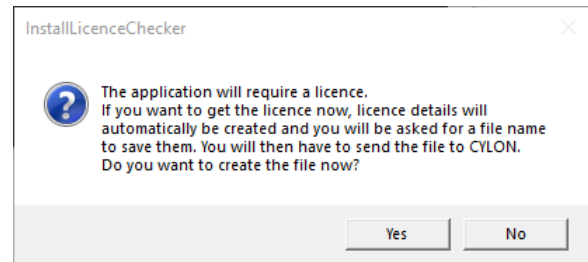
3 Requesting and Applying a Licence to CXpro^{HD}

CXpro^{HD} requires a valid license in order to operate. The license is provided by ABB via email.

Note: Before getting a license, ensure that your computer is not connected to a network through an external device (such as a docking station). Otherwise, the license may not be valid once the docking station is disconnected from the PC. A cable directly attached to the PC or a Wi-Fi connection are OK.

REQUESTING A LICENCE

If the PC does not contain a license when CXpro^{HD} is being installed, you will be offered the option to generate a license request file for the PC on which you are installing CXpro^{HD}.



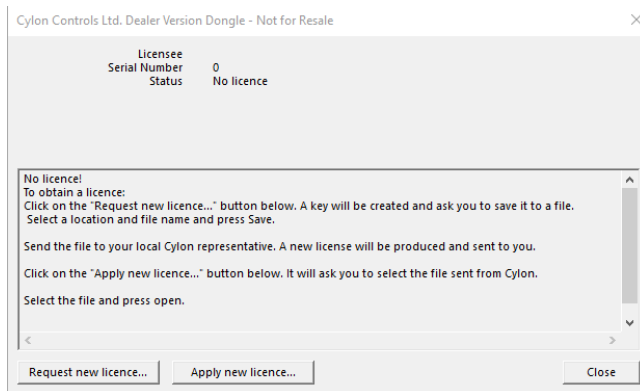
If you select **Yes**, then you will be prompted for a filename and location. Save the Licence request file, and then **email it to ABB** in order to receive the Software Dongle.

WHEN RUNNING THE APPLICATION

If you choose **not** to request a license during the installation process, the software will operate for a period of time. After that period has expired, you will not be able to use CXpro^{HD}, and a message will be displayed prompting you to register the software:

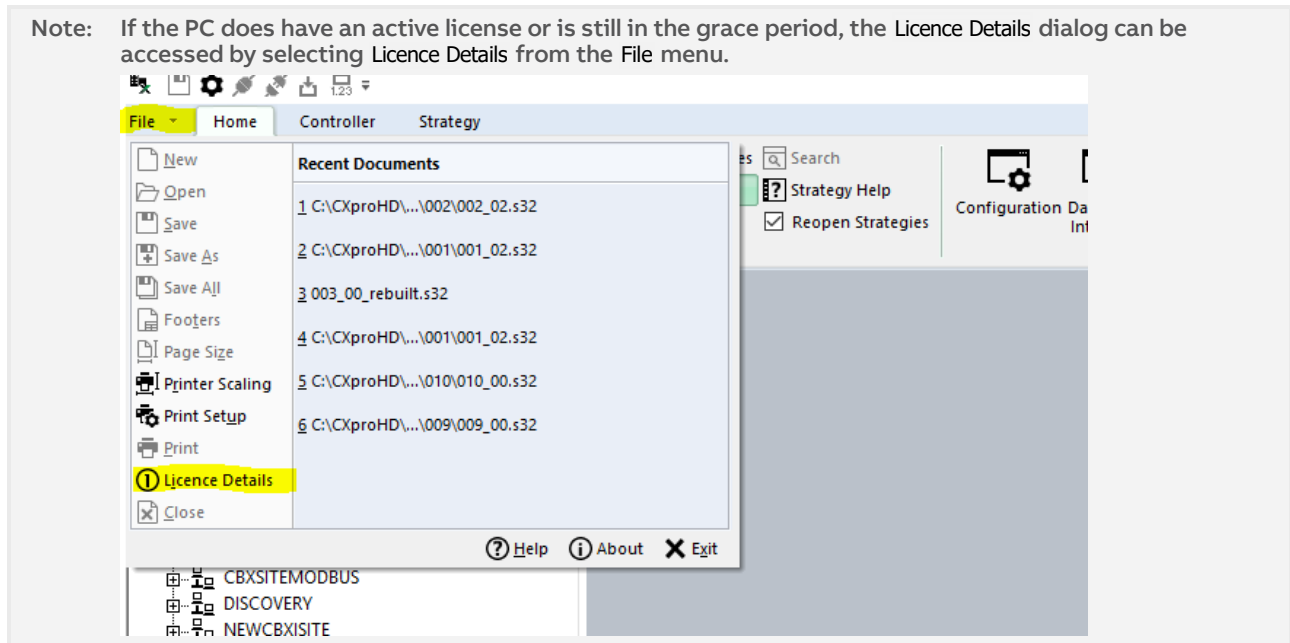


Click **Yes** to open the License Details dialog:



If you click the **Request new licence...** button you will be prompted for a filename and location. Save the Licence Request file, and then **email it to ABB** in order to receive the “Software Dongle” (license file).

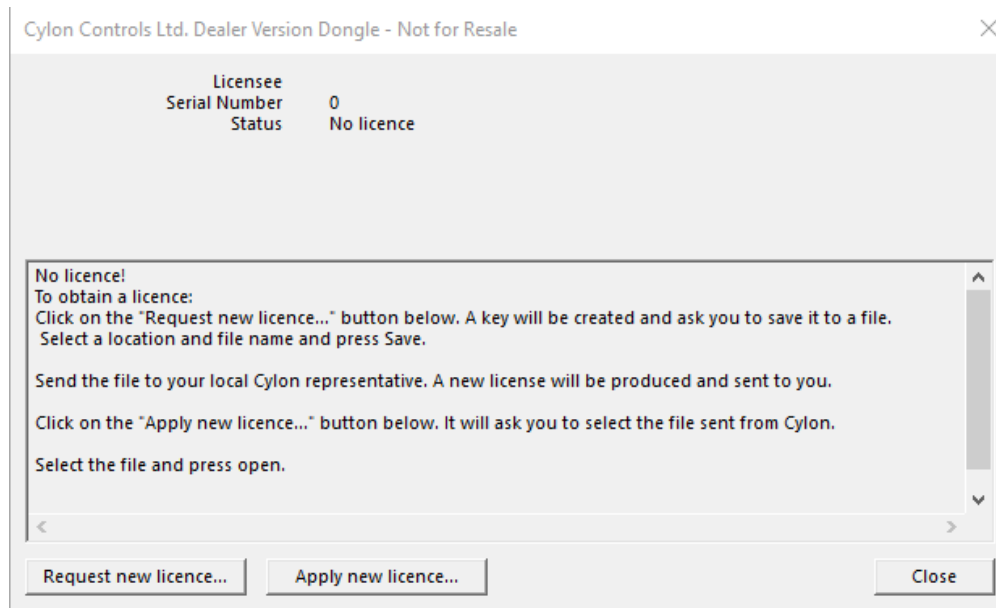
Note: If the PC does have an active license or is still in the grace period, the Licence Details dialog can be accessed by selecting Licence Details from the File menu.



APPLYING A LICENCE

When the license file is received from ABB, it must be applied to CXpro^{HD} as follows:

Select License Details from the File menu to open the License Details dialog.

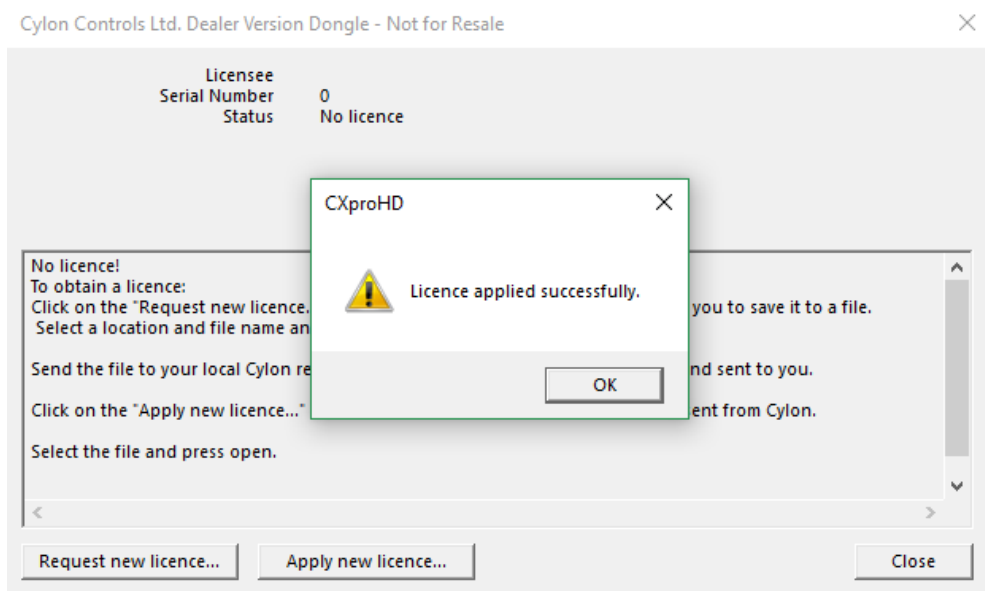


Click the Apply new licence... button.

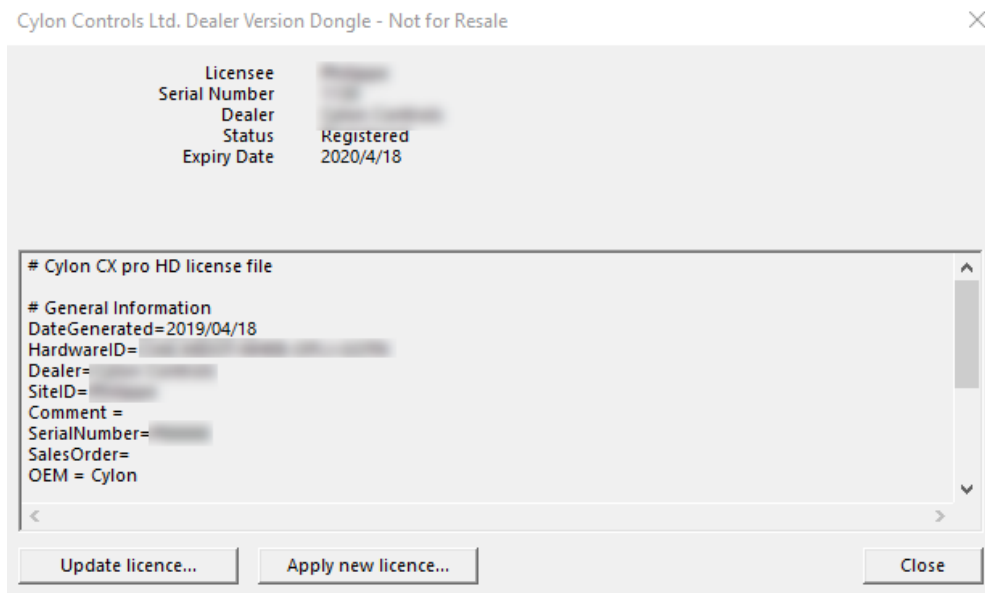
In the Windows Open File dialog, select the file supplied by ABB, and click Open.

A message is displayed indicating that the license has been applied successfully:

CXpro^{HD} Installation and Licensing | Requesting and Applying a Licence to CXpro^{HD}



When you click **OK**, the details of the license will be displayed:



The software is now licensed.



ABB CYLON CONTROLS

Clonsaugh Business &
Technology Park
Clonsaugh
Dublin 17
Ireland

Tel.: +353 1 245 0500
Fax: +353 1 245 0501
Email: info@cylon.com

ABB CYLON CONTROLS

ONE TECHNOLOGY LANE
EXPORT,
PA 15632

Tel.: +1 724 733-2000
Fax: +1 724 327-6124