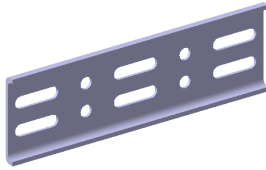

 TECHNICAL DATA SHEET

5" Super-Duty Splice Plate™ ABW5SDP (Aluminum)

For strength, reliability and savings

T&B® Cable Tray



Features:

- Extra-wide 13" (330.2mm) high-strength, heat-treated aluminum plate designed to maximize rigidity, resistance and overall strength of structures.
- Nylon washers make movement easier and reduce friction.

Installation:

- Supplied with all hardware required for both types of installation, hardware is Type 316 stainless steel
- No lubrication of the side rail required during installation or maintenance.

Application:

- Rated for 5" (127mm) aluminum side rails.
 - AH25, AH45: mid-span & quarter span expansion
- Can be used as an expansion joint alternative to the expansion splice plate at the quarter span which eliminates the need for additional supports on either side. Refer to ABB cable tray catalog for complete details.

Aluminum super-duty splice plate complete with all hardware required for either expansion or mid-span splicing in cable tray systems.

Material:

- High-strength, heat-treated aluminum

Kit includes:

- 2 super-duty splice plates
- 12 hexagonal button head ½ bolt
- 8 nylon insert locknuts
- 8 serrated flanged locknuts
- 12 nylon washers (spacers)

