

# Type SCADA-BEH

## Indoor/outdoor current transformer

### Product features

- 600 volt, 10 kV BIL, 60 Hz
- Single, dual, and multi ratios
- For mounting over bushings of reclosers, circuit breakers, or cable terminations

### Application

The SCADA-BEH indoor/outdoor, window-type current transformer is a 600 volt, 10 kV BIL rated unit. Primary current ratios are available from 100:5 thru 1200:5 at 60 Hertz (Hz) with a rating factor of up to 2.0. This dry-type, solid-cast current transformer will operate for supervisory control and data acquisition (SCADA) and with high accuracy for measurement or relay applications.

### Mechanical description

The core and coil assembly is wound and encapsulated in a molded cast resin with a window size of 4.75" or 5.5". The clamp-type post secondary terminals are ¼"-20 slotted screws with associated hardware located inside a weather-tight aluminum conduit box with two 1" NPT conduit hubs and blanking plugs.

### Accuracy performance

The SCADA-BEH can provide up to  $\pm 2.5\%$  class accuracy at 2.5 VA burden for measurement applications (see ratings specific to each ratio). The transformer is accurate through its rating factor and can be used continuously to this level.

### Mounting

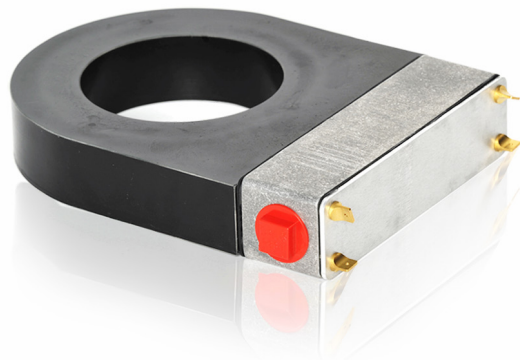
The SCADA-BEH is designed for mounting over the bushings of a distribution class recloser, circuit breaker, or cable termination. Three adjustable mounting brackets are provided to attach to bushing flange bolts.

### Testing

This unit can be tested to all applicable IEEE, CSA, or IEC standards as requested.

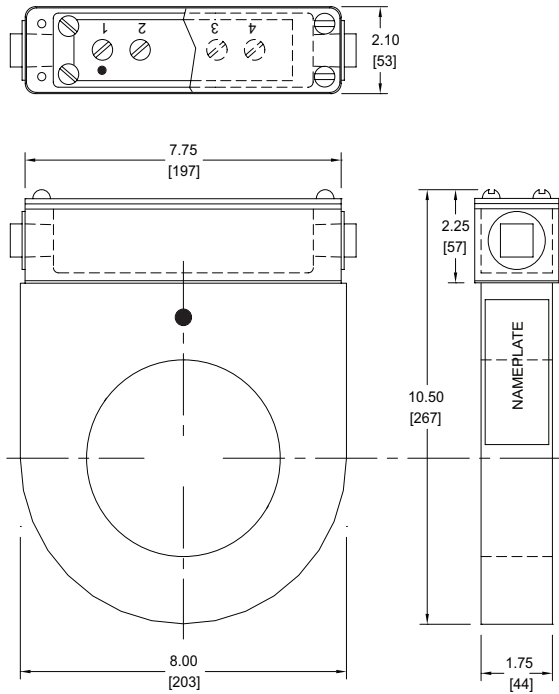
### Options

Contact factory for other needs.



## Unit dimensions

Note: Metric dimensions are displayed in [mm].



Type SCADA-BEH

### Selection guide

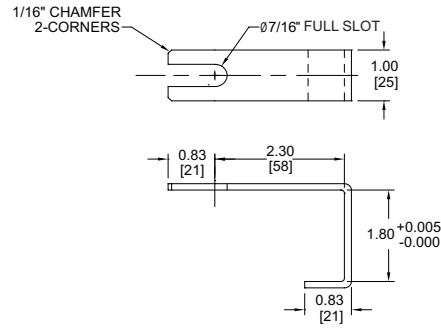
Ratio	Accuracy/burden	Rating factor	Style number*
100:5	± 10% - 2.5 VA	2.0	A370100S47
150:5	± 10% - 2.5 VA	2.0	A370150S47
200:5	± 5% - 2.5 VA	2.0	A370200S47
250:5	± 5% - 2.5 VA	2.0	A370250S47
300:5	± 3% - 2.5 VA	2.0	A370300S47
300:5 MR	± 2.5% - 2.5 VA	2.0	A370300M47
300:5 MR	TBD	2.0	A370300M55
400:5	± 3% - 2.5 VA	2.0	A370400S47
450:5	± 3% - 2.5 VA	2.0	A370450S47
450:5 MR	± 2.5% - 2.5 VA	2.0	A370450M47
500:5	± 3% - 2.5 VA	2.0	A370500S47
600:5	± 3% - 2.5 VA	2.0	A370600S47
600:5	± 3% - 2.5 VA	2.0	A370600S55
600:5 MR	± 2.5% - 2.5 VA	2.0	A370600M55
800:5	± 3% - 2.5 VA	2.0	A370800S55
1000:5	± 3% - 2.5 VA	1.5	A371000S55
1200:5	± 3% - 2.5 VA	1.5	A371200S55

MR = multi ratio

One second thermal/mechanical ratings: 80 x full winding  $I_{nom}$  / unlimited mechanical

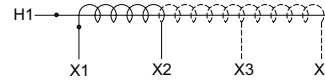
\* Catalog numbers ending in "47" have a 4.75" window; ending in "55" have a 5.5" window.

Additional styles available upon request. Contact your ABB sales representative or call +1-252-827-3212 for more information.



Material is 1/8" aluminum. Deburr and degrease. Must be clean of oil.

### Mounting bracket



### Wiring diagram

For more information please contact:

**ABB Inc.**

**Medium Voltage Distribution Components**

3022 NC 43 North

Pinetops, NC 27864

USA

Phone: +1 252 827 3212

Fax: +1 252 827 4286

[www.abb.com/mediumvoltage](http://www.abb.com/mediumvoltage)

### Note:

The information contained in this document is for general information purposes only. While ABB strives to keep the information up to date and correct, it makes no representations or warranties of any kind, express or implied, about the completeness, accuracy, reliability, suitability, or availability with respect to the information, products, services, or related graphics contained in the document for any purpose. Any reliance placed on such information is therefore strictly at your own risk. ABB reserves the right to discontinue any product or service at any time.

Copyright 2012 ABB.

All rights reserved.