

We reserve all rights in this document and in the information contained therein. Reproduction, use or disclosure to third parties without express authority is strictly forbidden. © ABB 19

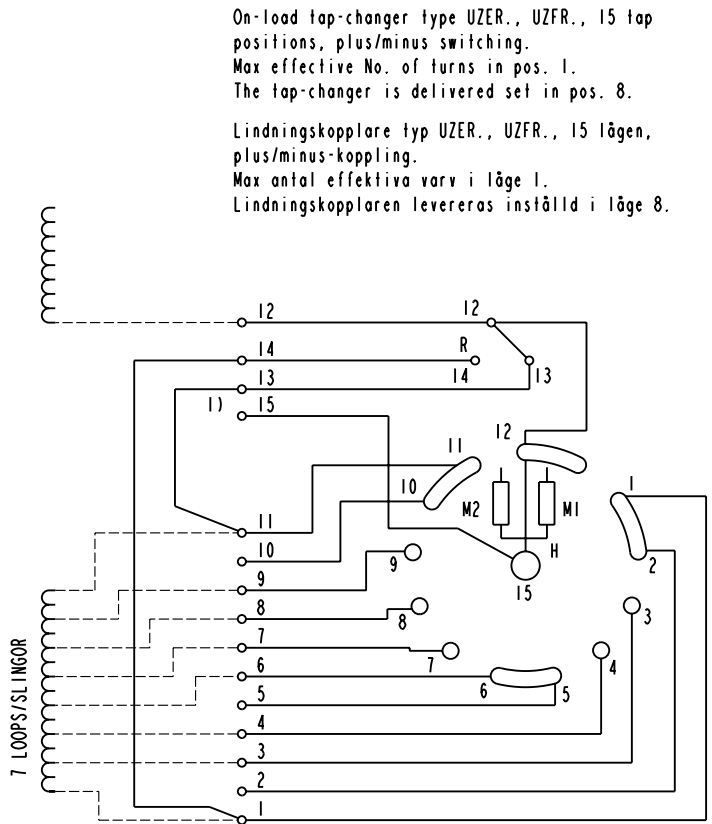
Pos. Läge	R connects förbinder	H connects förbinder
1	12-13	2-15
2		3-15
3		4-15
4A		5-15
4		6-15
5		7-15
6		8-15
7		9-15
8A	12-14	10-15
8B		11-15
8		12-15
8C		1-15
8D		2-15
8E		3-15
9		4-15
10		5-15
11	6-15	
11A	7-15	
12	8-15	
13	9-15	
14	10-15	
15		10-15

A position with letter is a through position and gives the same voltage as the normal position.

Läge med bokstav är ett genomloppsläge och ger samma spänning som normalläget.

1) Connections between the terminals 15 of the three phases are included in the star-point type.

Förbindningar mellan uttag 15 i de tre faserna ingår i nollpunktsutförandet.

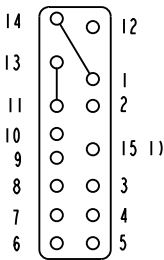


On-load tap-changer type UZER., UZFR., 15 tap positions, plus/minus switching.  
Max effective No. of turns in pos. 1.  
The tap-changer is delivered set in pos. 8.  
  
Lindningskopplare typ UZER., UZFR., 15 lägen, plus/minus-koppling.  
Max antal effektiva varv i läge 1.  
Lindningskopplaren levereras inställd i läge 8.

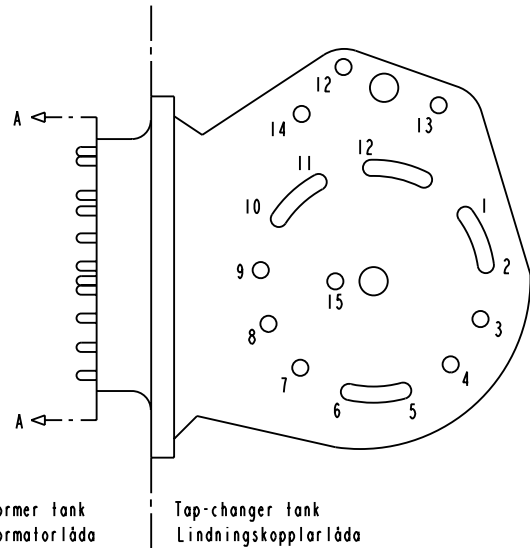
The tap-changer is shown in pos. 8  
Lindningskopplaren visad i läge 8

- R Change-over selector  
Plus/minus-omkopplare
- H Main contact  
Huvudkontakt
- M1, M2 Transition contacts  
Motståndskontakter

Terminal board  
Plint



Section A-A  
Sektion A-A



Transformer tank  
Transformatorlåda

Tap-changer tank  
Lindningskopplarlåda

Sheet	Cont
Year	Week
Dept	
Rev	Appd
Year	Week
Design checked by	Design checked by
Issued by	Dept
Year	Week
Lang	Sheet
Rev	Cont

Rev	Appd	Year	Week	Description (English) <b>CONNECTION DIAGRAM</b>		DATAORIGINAL
Accepted by qual control R. Yngvesson	Accepted for prod by			Description (own language) <b>KOPPLINGSSCHEMA</b>		File name 0394-4
Design checked by B-O. Stenestam	Drawn by L. Bergman			Lang	Sheet	1
Design checked by M. Hedlund	Issued by COM/TKO	Year	Week	Rev	Cont	-
		Asea Brown Boveri		5492 0394-4		