

We reserve all rights in this document and in the information contained therein. Reproduction, use or disclosure to third parties without express authority is strictly forbidden. © Copyright 2014 ABB.

NOTES:

1) UNIT DIMENSIONS:

MAIN TRANSFORMER CABINET (W x D x H):

42.0 in. x 36.0 in. x 78.0 in.
[1067 mm x 914 mm x 1981 mm]

24" [610 mm] SIDE CAR (W x D x H):

24.0 in. x 36.0 in. x 78.0 in.
[610 mm x 914 mm x 1981 mm]

2) UNIT WEIGHT:

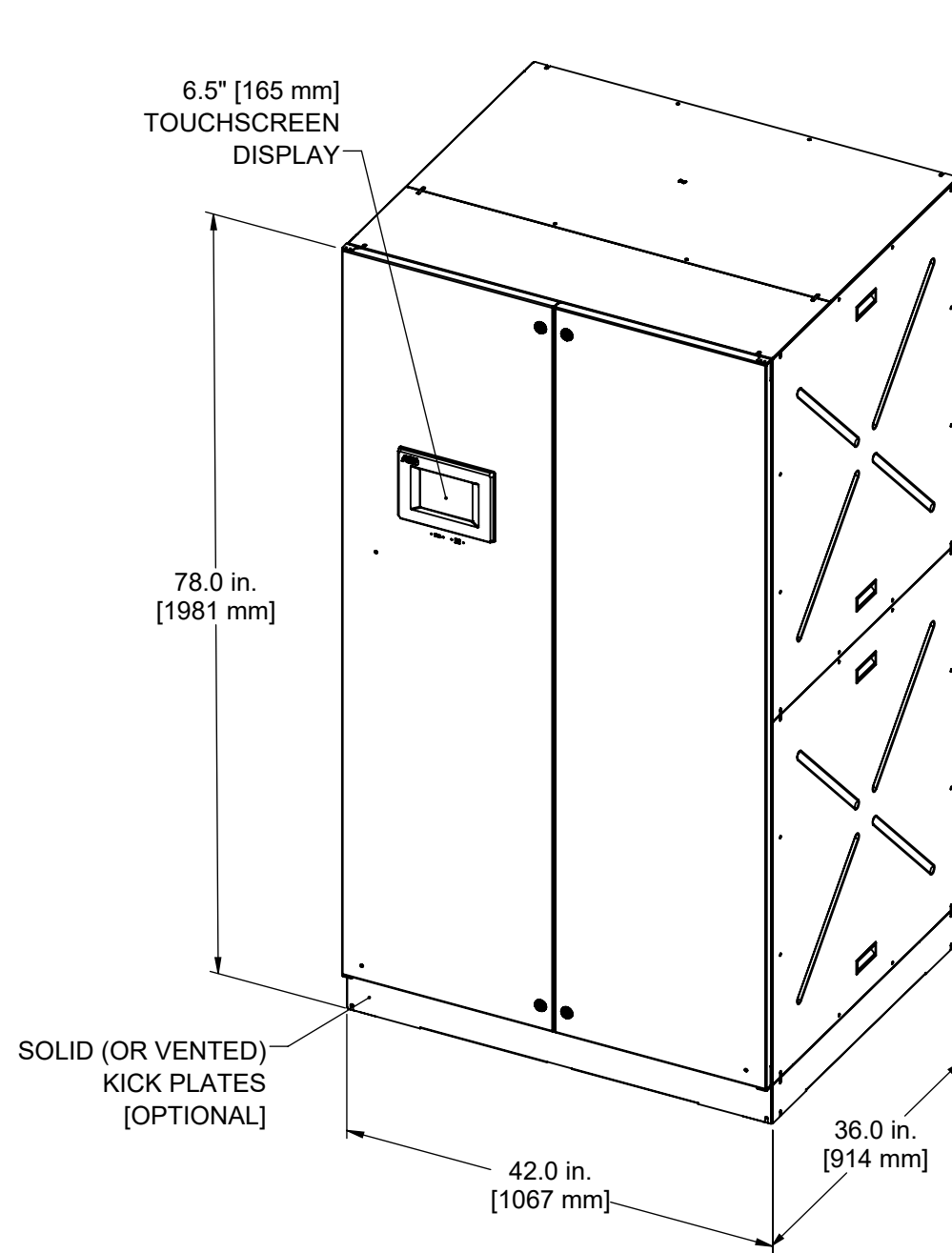
MAIN TRANSFORMER CABINET: 2650 lbs. [1202 kg]
24" [610 mm] SIDE CAR: 350 lbs. [159 kg]
COMBINED: 3000 lbs. [1361 kg]

3) SHEET CONTENTS:

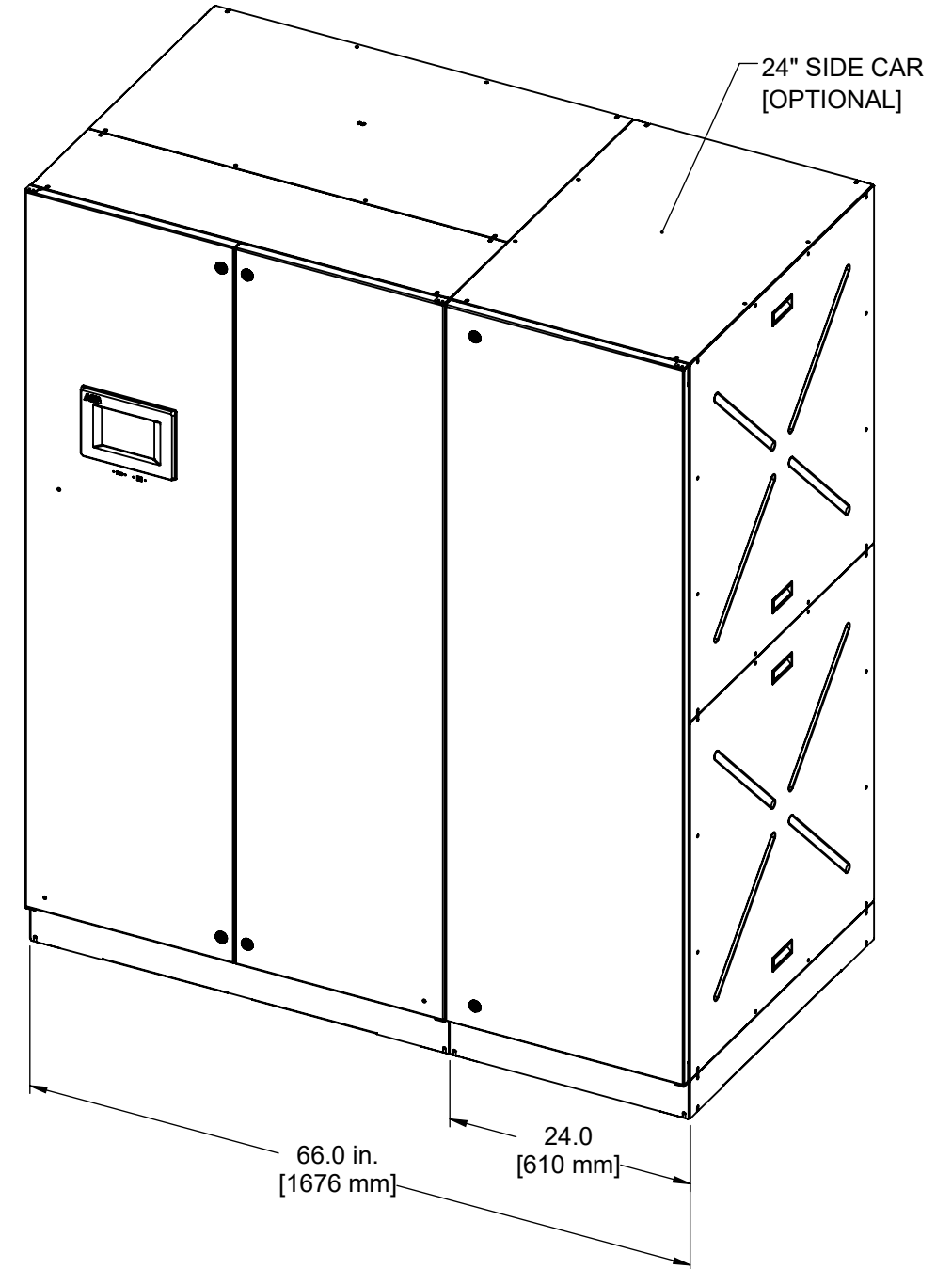
- SHEET 1: OVERALL DIMENSIONS AND WEIGHTS
- SHEET 2: RECOMMENDED MINIMUM CLEARANCES
MOUNTING FEET LOCATIONS
- SHEET 3: CABLE ENTRY/EXIT INFORMATION
- SHEET 4: MAIN BREAKER AND GROUND
BUSBAR INFORMATION
- SHEET 5: VIEWS OF VARIOUS DISTRIBUTION

4) LISTED WIRE SIZES, RATINGS, AND QUANTITIES ARE RECOMMENDATIONS ONLY. REFER TO LOCAL CODES.

5) SYSTEM MUST HAVE ALL PANELS AND DOORS INSTALLED FOR PROPER OPERATION



MAIN TRANSFORMER CABINET (MTC)



**MAIN TRANSFORMER CABINET (MTC)
WITH 24 in. [610 mm] SIDE CAR**

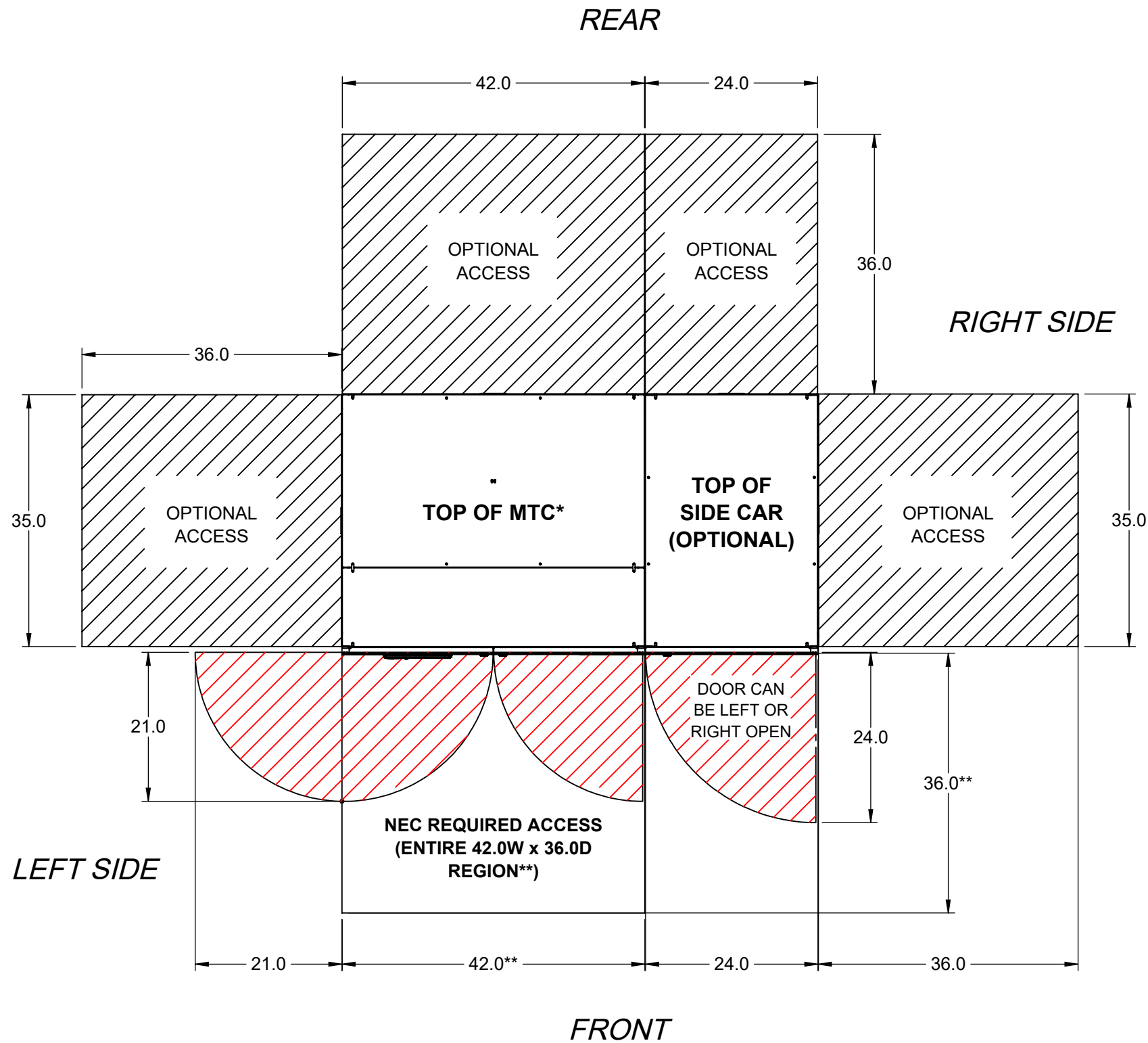
Rev.	ECN#	Resp.	Description	Date
A1	--	ZWS	ADDED DOOR SWING DIMENSIONS ON PAGE 2	11/13/2020
A0	--	ZWS	INITIAL RELEASE	10/27/2020

Revision Table			
Units	Sheet Size	Scale	
Inch	B	1:16	
Item ID	Item Rev.	Date Drawn	
94-9200-00071840	A1	09/14/2020	
Document ID	Doc. Rev.	Page	
94-9200-00071840	A1	1 / 5	

Material N/A	Finish N/A	Prepared Z. W. SMITH	Title DRAWING, OUTLINE, 50 - 300 kVA ABB PDU TRUFIT
Tolerances X.XX = ±.03 X.XXX = ±.015	Unless Otherwise Specified: Inside bend radius equals one material thickness. Remove all burrs and sharp edges. Part must comply with company document 94-10-000001. Interpret drawing in accordance with ASME Y14.5-2009.	Approved Z. W. SMITH Division/Dept. Power Protection	ABB Document Kind Detail Drawing
Hole ϕ = ±.005 Angle = ±1/2°			

We reserve all rights in this document and in the information contained therein. Reproduction, use or disclosure to third parties without express authority is strictly forbidden. © Copyright 2014 ABB

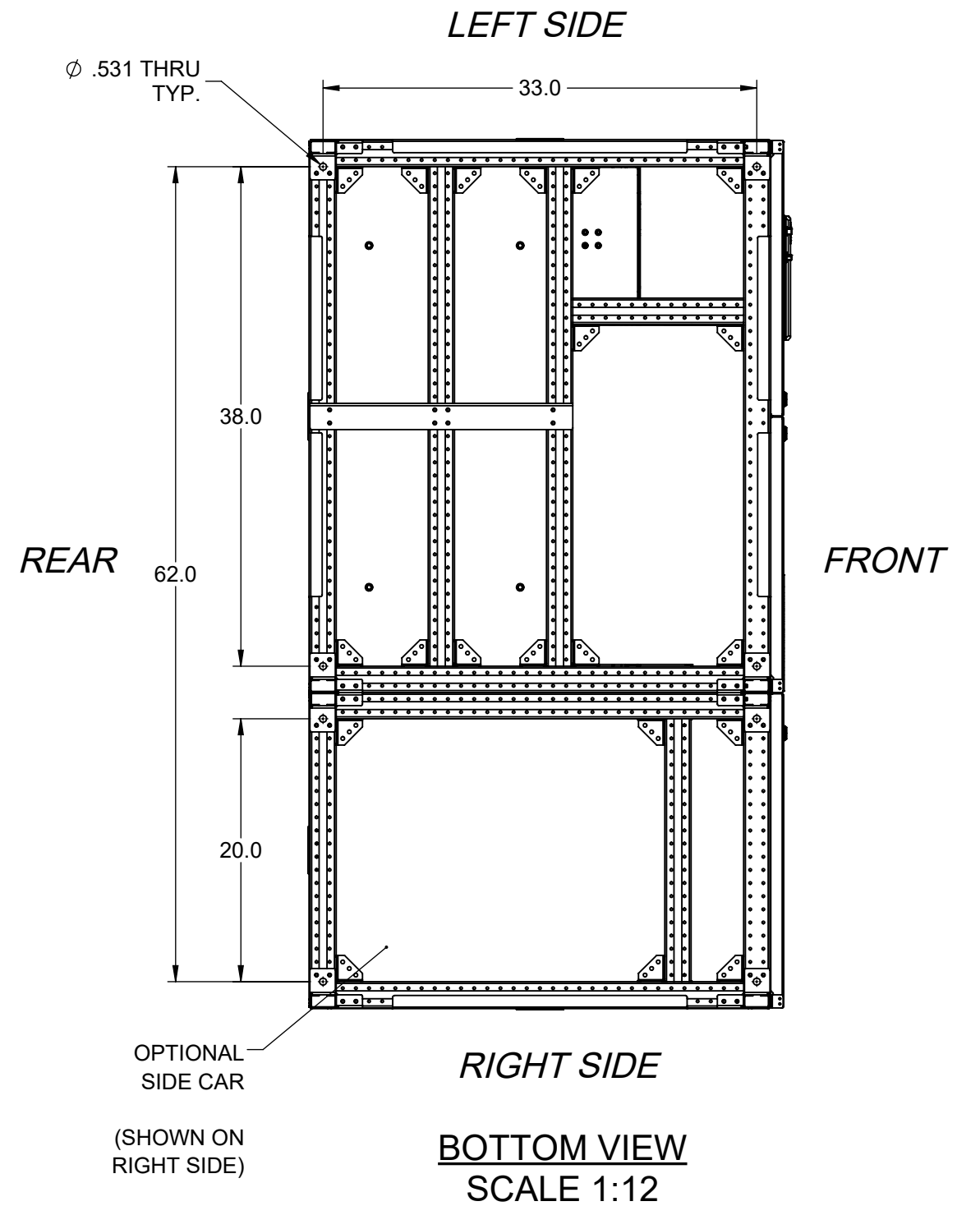
RECOMMENDED MINIMUM CLEARANCES



**NOTE: RECOMMEND
18.0" MIN. GAP BETWEEN
TOP OF UNIT AND CEILING*

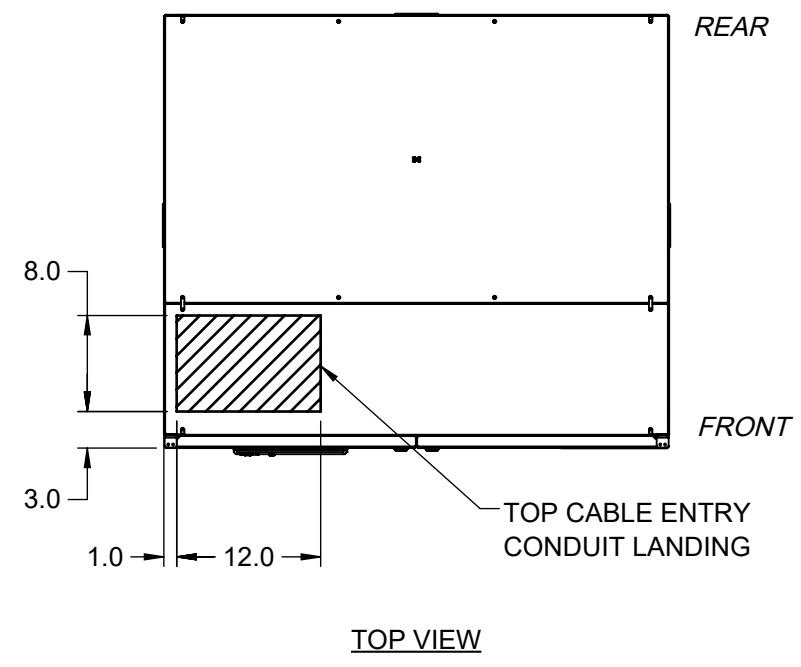
SCALE 1:18

MOUNTING FEET LOCATIONS

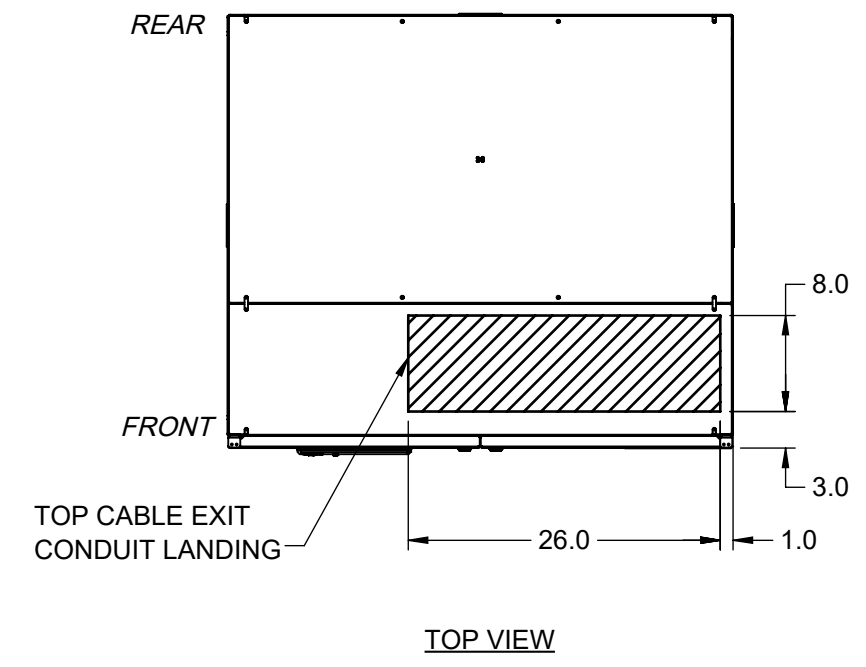


We reserve all rights in this document and in the information contained therein. Reproduction, use or disclosure to third parties without express authority is strictly forbidden. © Copyright 2014 ABB

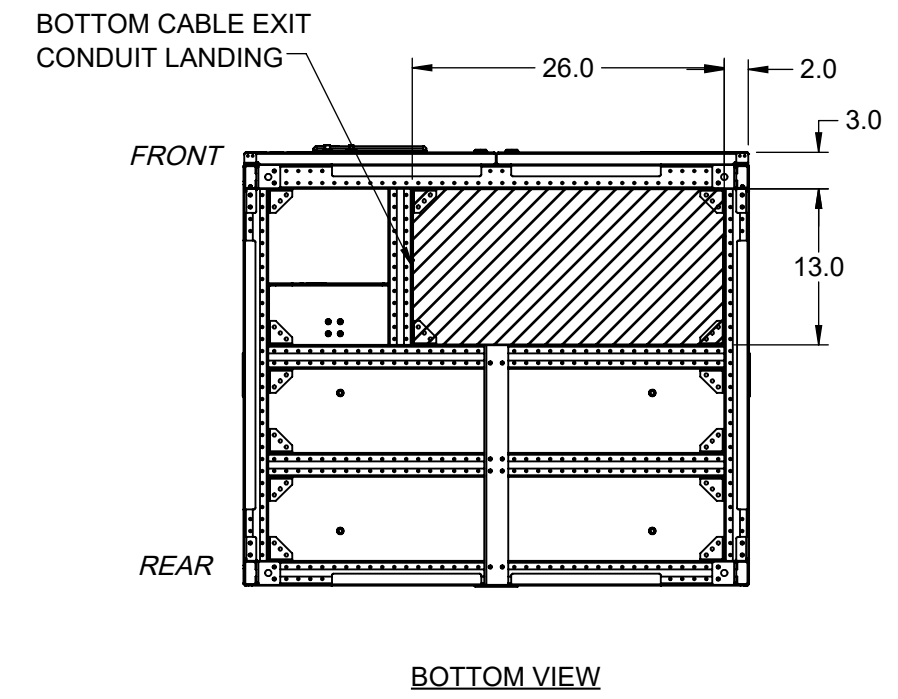
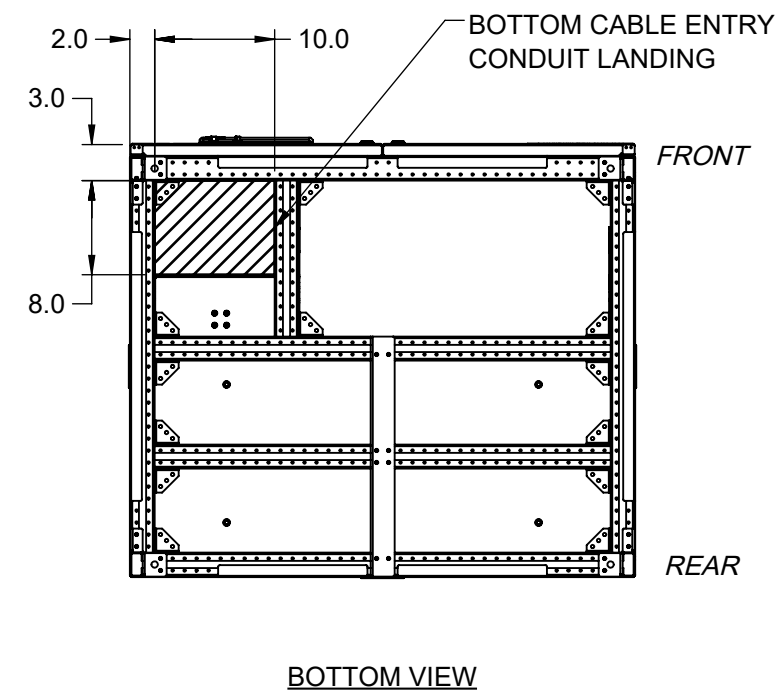
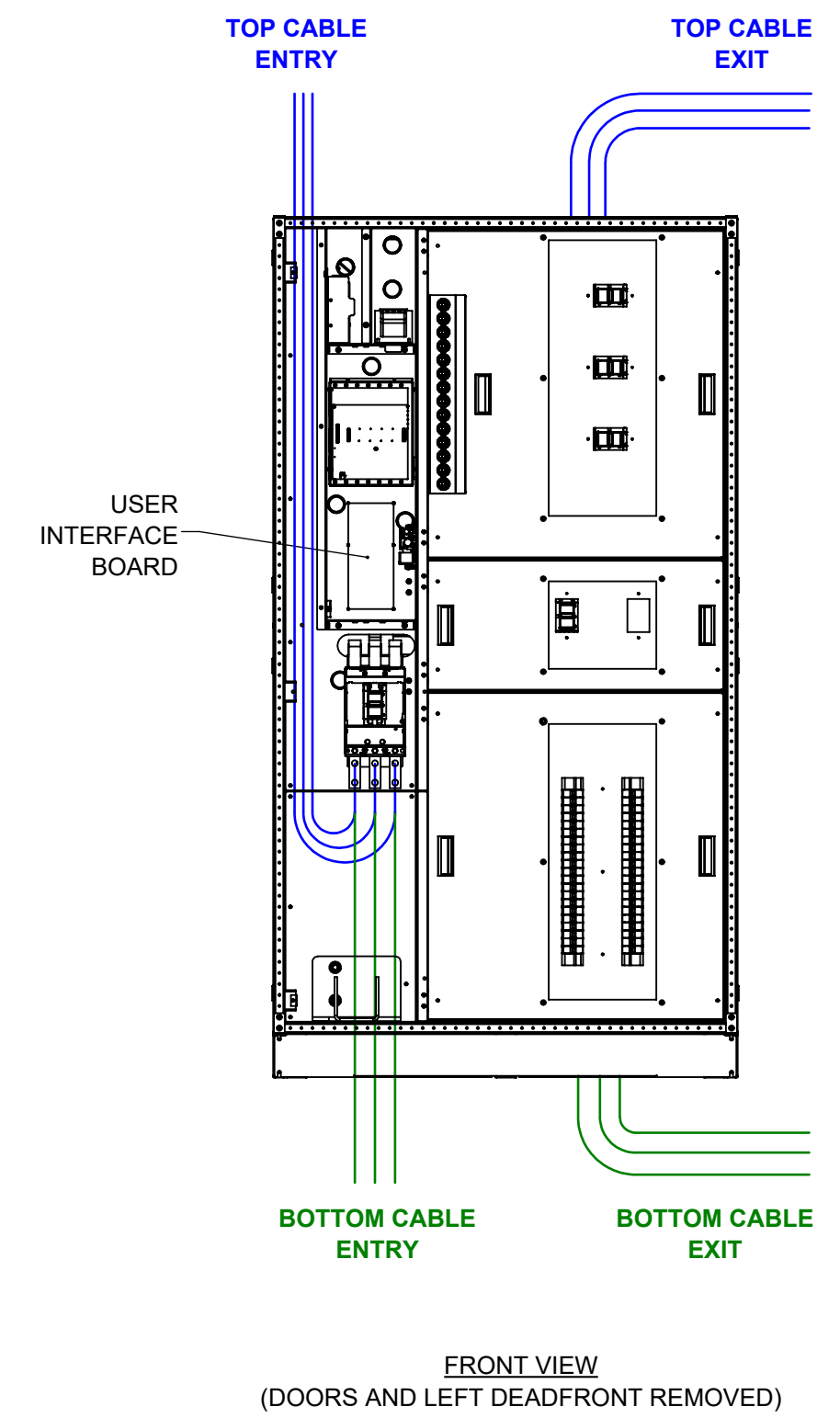
CABLE ENTRY LOCATIONS



CABLE EXIT LOCATIONS

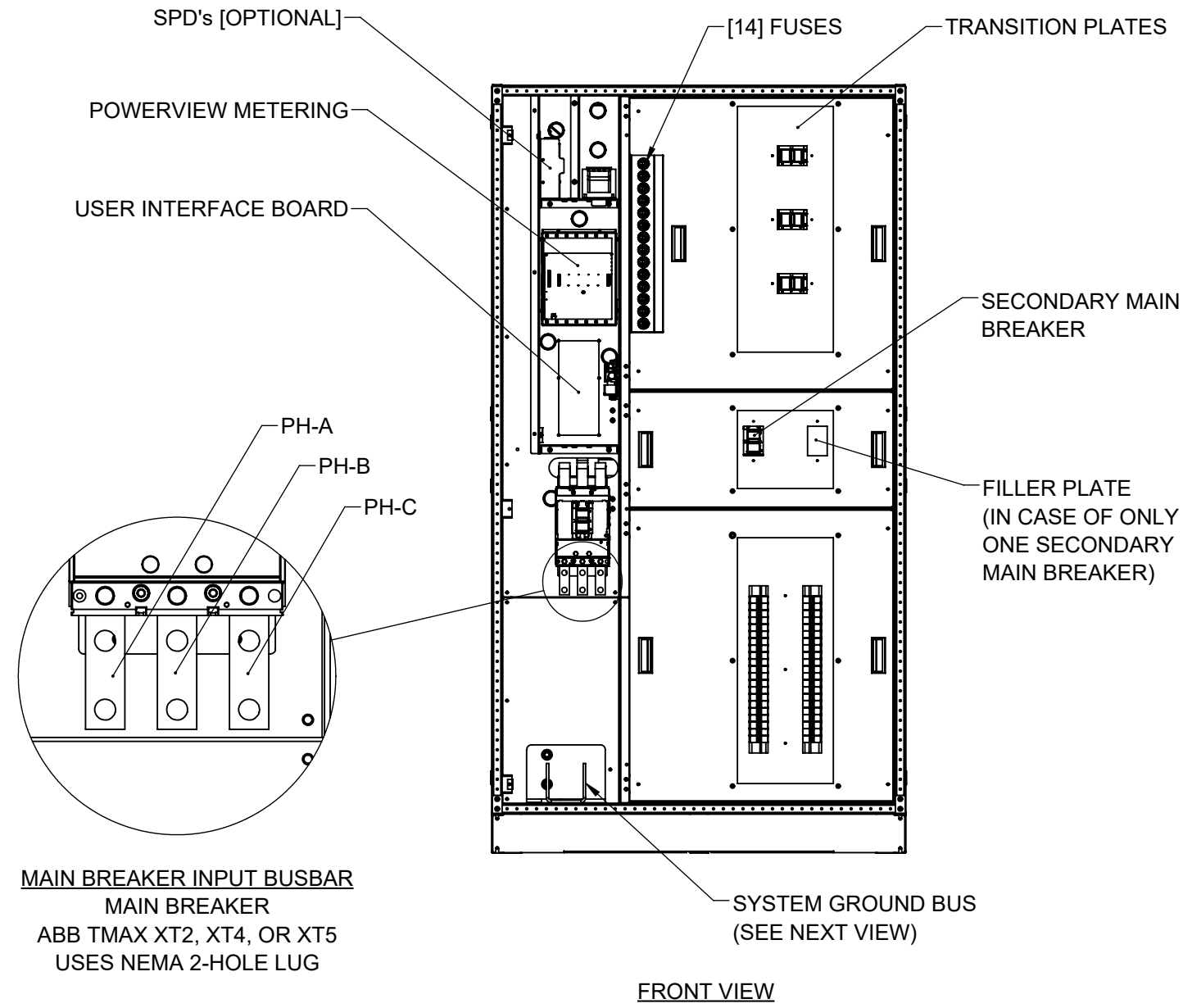


CABLE ENTRY/EXIT PATHS

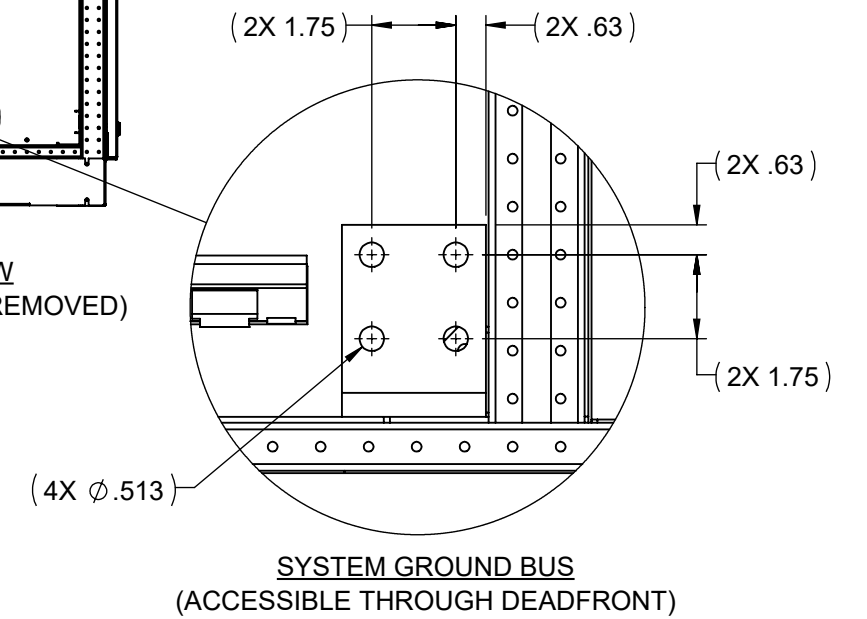
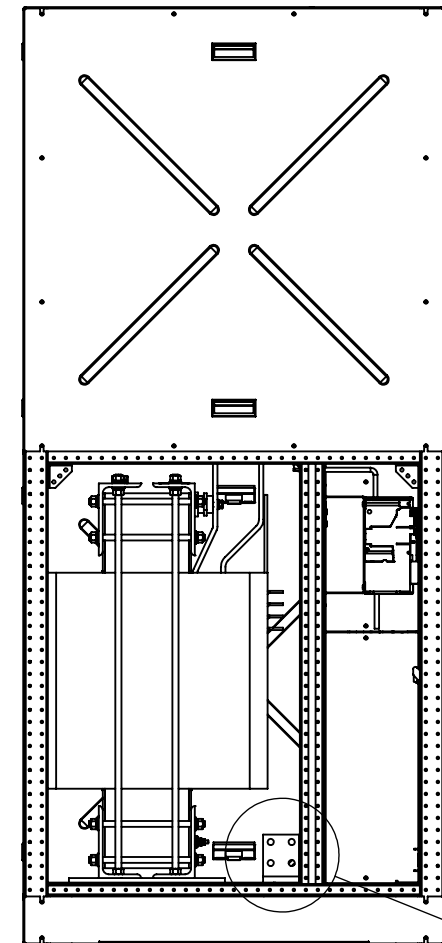


We reserve all rights in this document and in the information contained therein. Reproduction, use or disclosure to third parties without express authority is strictly forbidden. © Copyright 2014 ABB

MAIN BREAKER INPUT AND SYSTEM GROUND BUS DETAIL

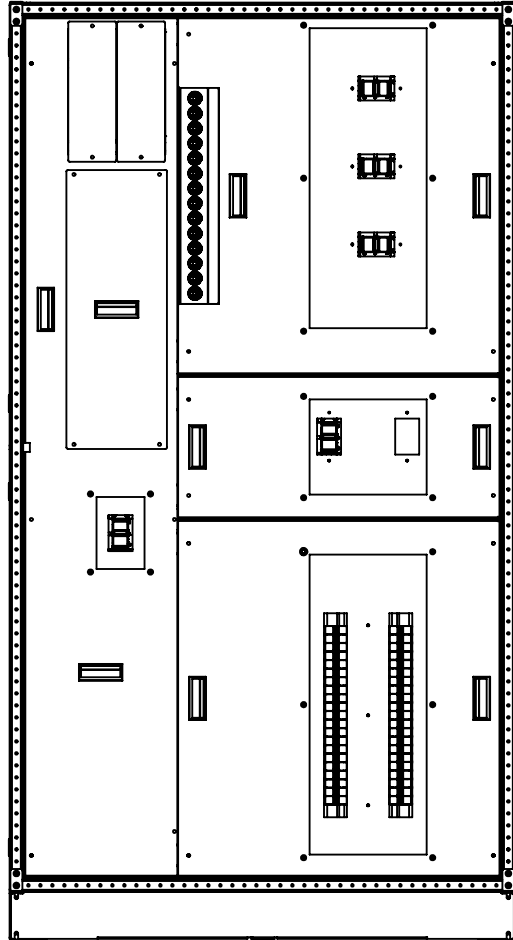


MAIN BREAKER INPUT BUSBAR
MAIN BREAKER
 ABB TMAX XT2, XT4, OR XT5
 USES NEMA 2-HOLE LUG



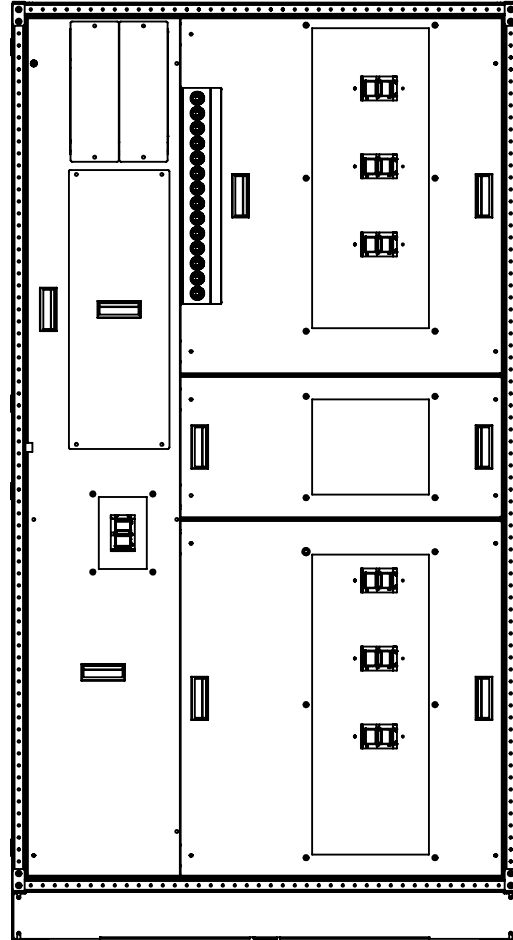
VIEWS OF VARIOUS DISTRIBUTION CONFIGURATIONS

(NOTE: VIEWS SHOWN AS EXAMPLES ONLY. TRUFIT PDU CAN ACCOMODATE MOST COMBINATIONS, TOP AND/OR BOTTOM OF DISTRIBUTION CONFIGURATIONS.)



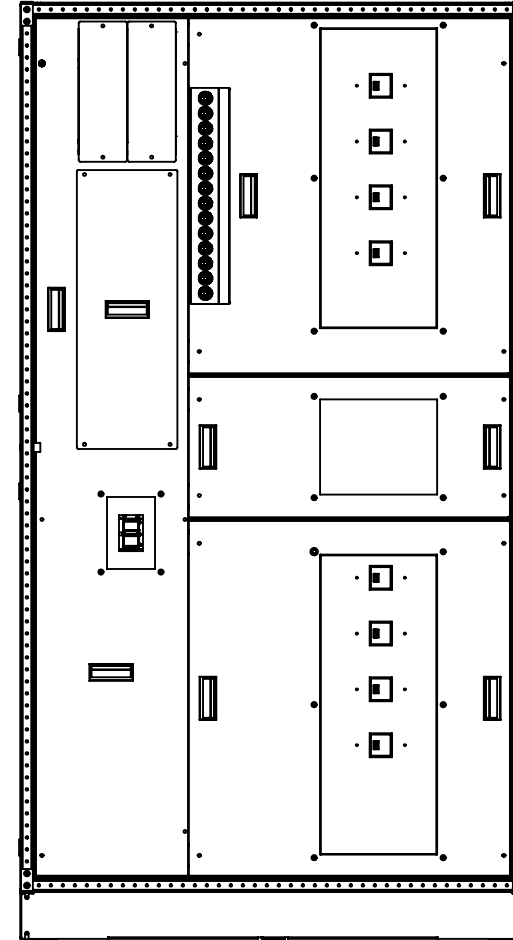
FRONT VIEW

TOP: [3] ABB TMAX XT5 400A SUB-FEED BREAKERS
 BOT: ABB PROLINE 225A OR 400A 42P PANELBOARD



FRONT VIEW

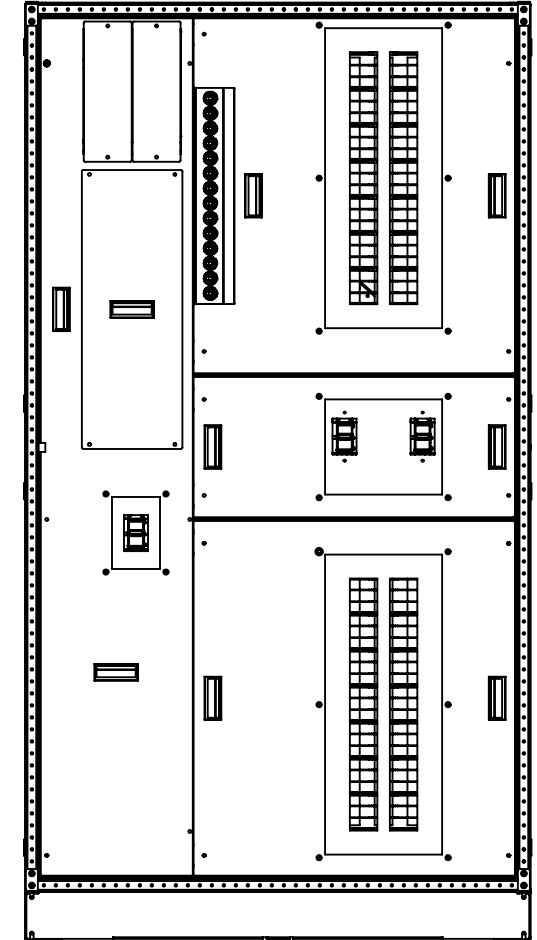
TOP: [3] ABB TMAX XT5 400A SUB-FEED BREAKERS
 BOT: [3] ABB TMAX XT5 400A SUB-FEED BREAKERS



FRONT VIEW

TOP: [4] ABB TMAX XT4 SUB-FEED BREAKERS
 BOT: [4] ABB TMAX XT4 SUB-FEED BREAKERS

(CAN ALSO ACCOMODATE UP TO
 [8] ABB TMAX XT3 SUB-FEED BREAKERS)



FRONT VIEW

TOP: GE 225A OR 400A 42P PANELBOARD
 BOT: GE 225A OR 400A 42P PANELBOARD