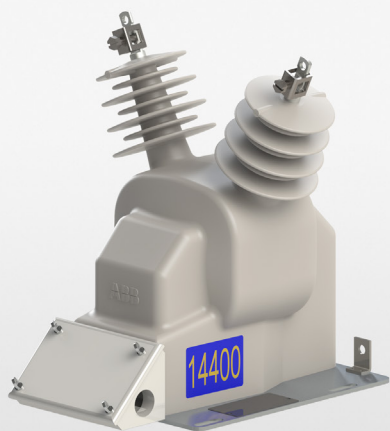


INSTRUMENT TRANSFORMERS

VOZ-11B and VOY-11B

Outdoor voltage transformers



Product features

- 15 kV, outdoor
- 110 kV BIL, 60 Hertz
- Electrical clearances:
 - Strike: 13.4" (340 mm)
 - Creep: 30.8" (782 mm)
- Minimum operating temperature: -50° C
- Approximate weight: 83 lbs. (38 kg)

Application

The VOZ-11B and VOY-11B voltage transformers are designed for metering and relaying applications.

Industry leading performance

An enhanced creep distance provides outstanding flashover resistance and increased surface area for better heat dissipation. Encapsulated in the advanced HCEP (hydrophobic cycloaliphatic epoxy) material, these units provide unparalleled performance in outdoor applications, including wet, polluted, or coastal environments. These units are also available with IEEE 0.15 metering accuracy class; see VOZ-11BE.

Terminals

The electro-tin plated copper primary line terminals accommodate #10 to 250 MCM conductors. Clamp-type secondary terminals accommodate #14 through #3 wire. A ground terminal is also provided for grounding the secondary circuit at the transformer.

The VOZ-11B and VOY-11B voltage transformers are designed for outdoor metering and relaying applications.

Junction box

The junction box has a 1" conduit hub on either end and a knock out for a 1" conduit fitting on the bottom. The box is anchored to the body of the transformer with screws and can be easily detached, simplifying installation and change-out procedures.

Baseplate

The base is constructed of corrosion-resistant aluminum and is secured to the encapsulated base support.

Mounting

The VOZ-11B and VOY-11B can be mounted in upright or cantilever positions. Stress relief devices should be used to support cable connections.

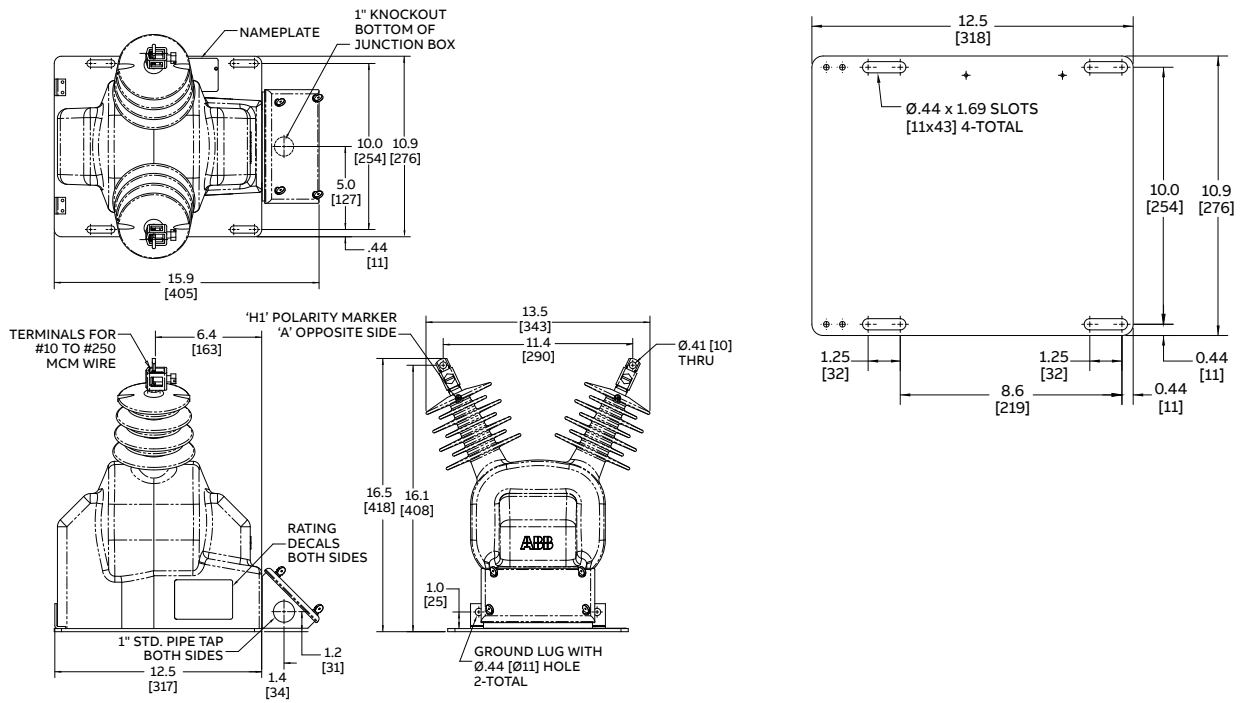
Test reports

Test reports are stored electronically and can be e-mailed in various formats at the time of shipment.

Standards

These units meet or exceed all requirements of IEEE C57.13-2016 and can be tested to other standards as requested.

Dimensions (inches [mm])



Selection guide

Primary voltage	Secondary voltage	Winding ratio	Metering accuracy	Thermal rating at 30° C	Rated voltage factor (RVF)*	Style number
VOZ-11B						
7200/12470Y	120	60:1	0.3Z	1500	1.1	E-923A632G05
7620/13200Y	120	63.5:1	0.3Z	1500	1.1	E-923A632G06
8400/14560Y	120	70:1	0.3Z	1500	1.1	E-923A632G07
12000/12000Y	120	100:1	0.3Z	1500	1.1	E-923A632G08
13200/13200Y	120	110:1	0.3Z	1500	1.1	E-923A632G09
14400/14400Y	120	120:1	0.3Z	1500	1.1	E-923A632G10
VOY-11B						
7200/12470Y	120	60:1	0.3Y	1500	1.1	E-923A658G01
7620/13200Y	120	63.5:1	0.3Y	1500	1.1	E-923A658G02
8400/14560Y	120	70:1	0.3Y	1500	1.1	E-923A658G03
12000/12000Y	120	100:1	0.3Y	1500	1.1	E-923A658G04
13200/13200Y	120	110:1	0.3Y	1500	1.1	E-923A658G05
14400/14400Y	120	120:1	0.3Y	1500	1.1	E-923A658G06

*RVF for 8 hours

Additional styles available upon request. Contact your ABB sales representative or call +1-252-827-3212 for more information.