

Technical Note 141

# Installing Drive Composer Pro on a New Computer

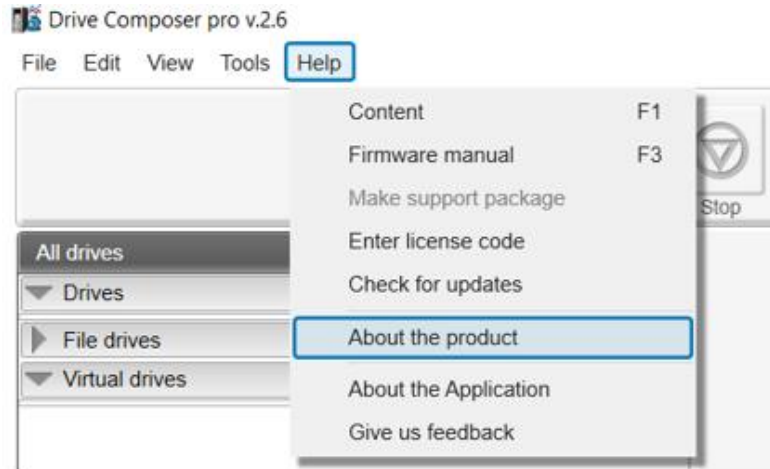
## Recovering and Reusing Your License Key

Once Drive Composer is installed on a computer and the License Key has been entered, it is then possible to use Drive Composer Pro on that computer. When it comes to a time that there are plans to replace that computer, it is also possible to recover the key so it can be used for the new computer and then uninstall Drive Composer Pro on the first computer.

If possible, the key should be recovered from the old computer while the user can still access it. First you need to open Drive Composer pro and select Offline on the welcome screen.



Then you can access the key first by clicking on the Help tab and then by selecting 'About the Product'.



This will then display the following screen, where you can view the current License Key to be used on the new computer.



Register the product on the new computer once Drive Composer has been installed, by entering the license. Simply open Drive Composer, click on the Help tab, and then 'Enter License Code'.

If for some reason the License Key cannot be recovered from the old PC in this way, the remedy is to access the original PO / Sales Order and then work with our sales channel partner to supply a new License Key.

The customer could alternatively navigate to where the license file is located C:\ProgramData\DriveWare\Composer and copy the license.dcllic out of there and go to the new pc and paste that file in the same location after drive composer is installed.