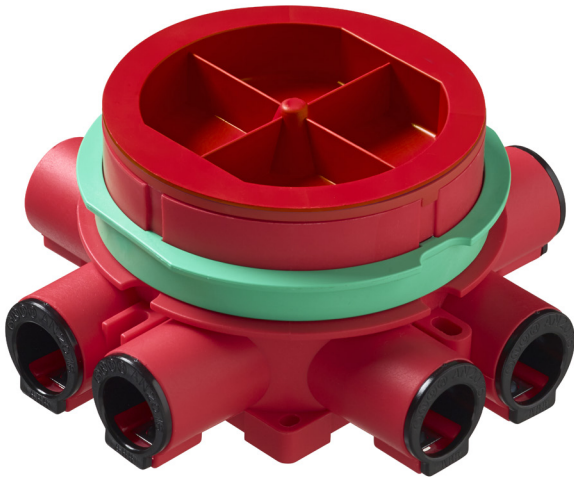


# Fire-retardant ceiling junction box

## For EI30 and EI60 fire-rated ceilings

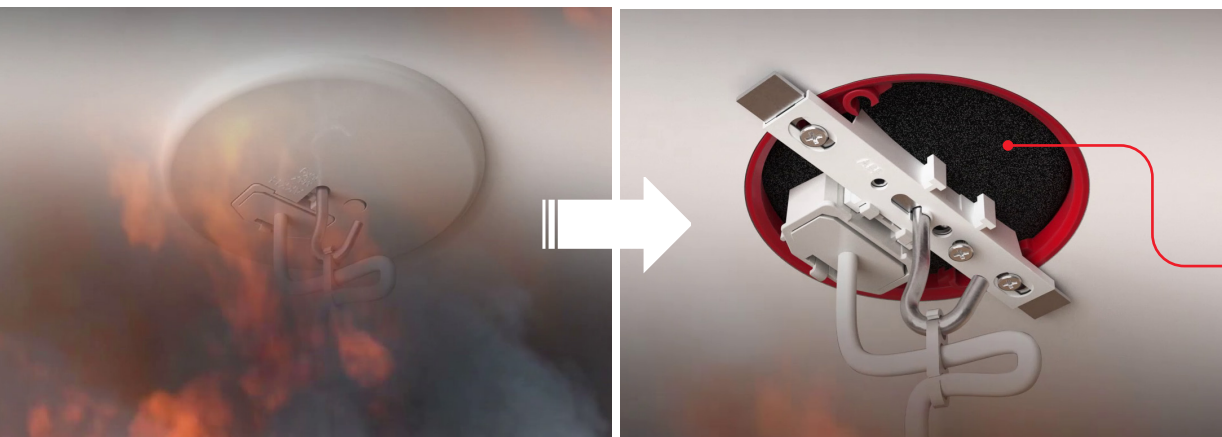


The AU70FR contains a fire cushion, made of expanding material, that prevents fire from spreading to ceiling structures.

The AU70FR fire-retardant ceiling junction box can be installed in EI30 and EI60-fire-rated ceilings (fire-rated plasterboard ceiling according to the plasterboard manufacturer's or structural engineer's instructions). The fire-rated ceiling junction box can be installed in both load-bearing and non-load-bearing roof structures, and can be used with both intermediate floors and roofs.

### Properties

- Includes expanding fire cushion to prevent fire from spreading to ceiling and roof structures.
- Suitable for use in EI30 and EI60-rated intermediate floors and roofs.
- Can be used in load-bearing and non-load-bearing structures.
- Can be used with boards of different thicknesses and board combinations without accessories.



The fire cushion expands when the temperature rises as a result of fire. The expansion of the material in the event of fire seals the box, so the ceiling structure retains its specified fire rating.

Type	Product ID	EAN	Description	Package
<a href="#">AU70FR</a>	2TKA00003942	6438199005911	Fire-rated ceiling junction box for EI30 and EI60-rated ceilings	20

---

## AU70FR features

### Open fixed inlet

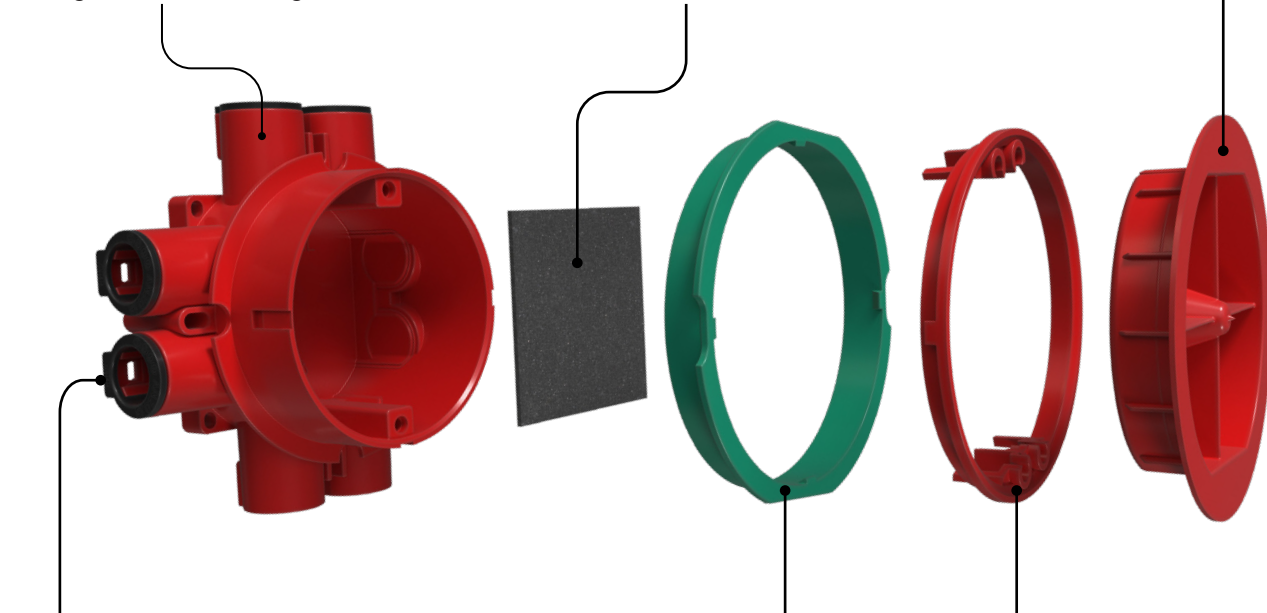
- The box has one open fixed inlet for a  $\varnothing$  16/20 mm conduit.
- Eight fixed inlets in total.
- The inlet adapter is removed when using the  $\varnothing$  20 mm fitting tube.

### Fire cushion

Fire cushion is fixed to base of the box, made of intumescent material, expands when the temperature rises as a result of fire. The expansion of the material in the event of fire seals the box, so the ceiling structure retains its specified fire rating.

### Lid

The junction box is supplied with an AS67.70 protective cover



### Reducer

- The reducer is removed when using the  $\varnothing$  20 mm conduit.

**Adapter rings makes it possible to adjust the box to be even with the level of the ceiling.**

- The green adapter ring is used with a single layer of board. The ring is removed if there are two layers of board.
- With the red adapter ring, the height of the box can be increased by either 2.5 mm or 5 mm, depending on the ring position. The ring is needed for ceiling structures made with 15 mm gypsum boards.