

Fitting an Additional Option board

The instructions detailed in this information sheet must be carried out by suitably trained personnel and in accordance with the information given.

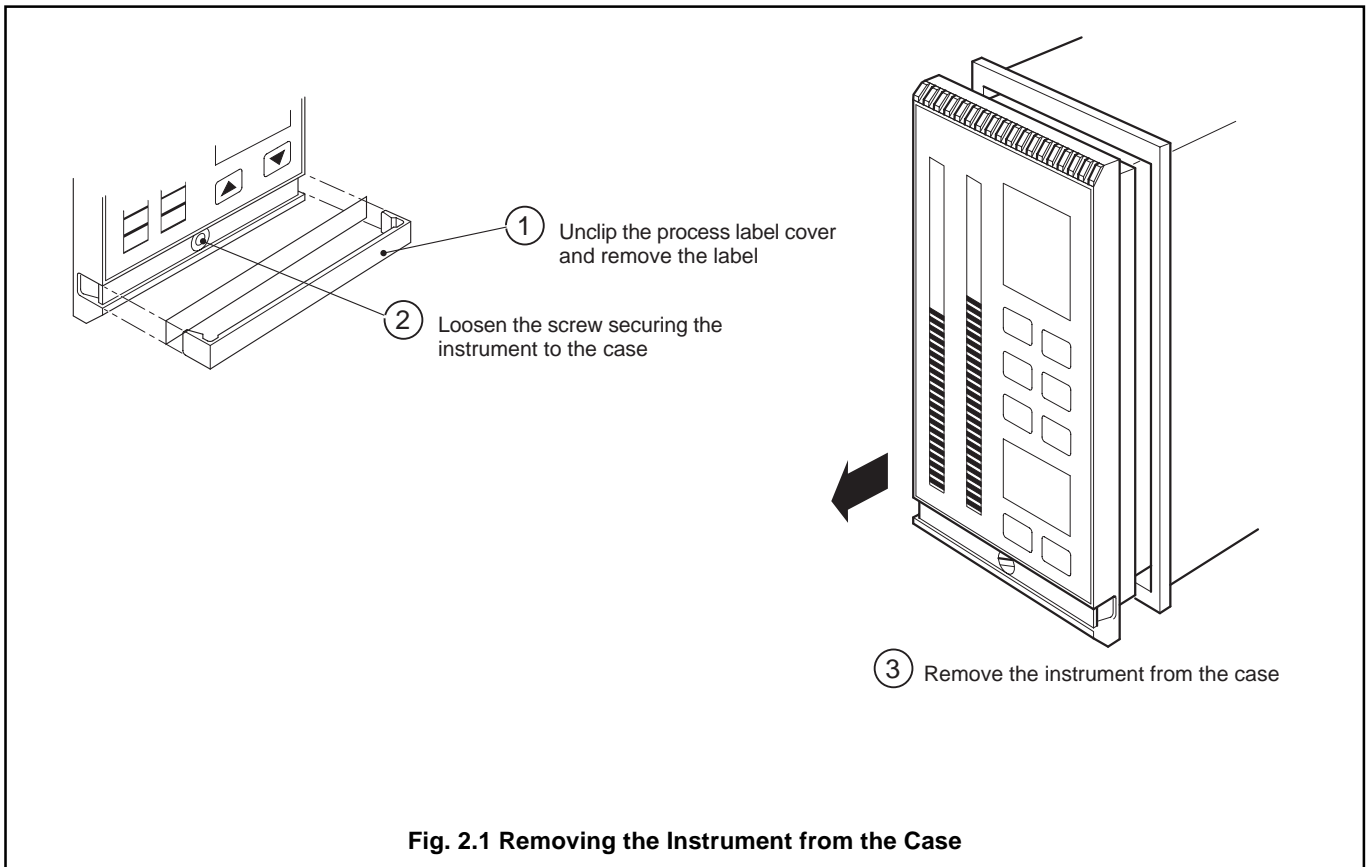
1 Introduction

The COMMANDER 500 can be enhanced by the addition of various upgrades. There are four upgrade kits available – see Table 1.1. This information sheet contains full instructions for fitting any of the upgrade kits.

Upgrade Kit	Part Number
Two relays and two digital inputs	C500/0701
One universal input, one analog output, two relays and two digital inputs	C500/0702
MODBUS RS485	C500/0703
One universal input, one analog output, two relays, two digital inputs and MODBUS	C500/0704

Table 1.1 Upgrade Kit Identification

2 Removing the Instrument from the Case



3 Fitting an Additional Module

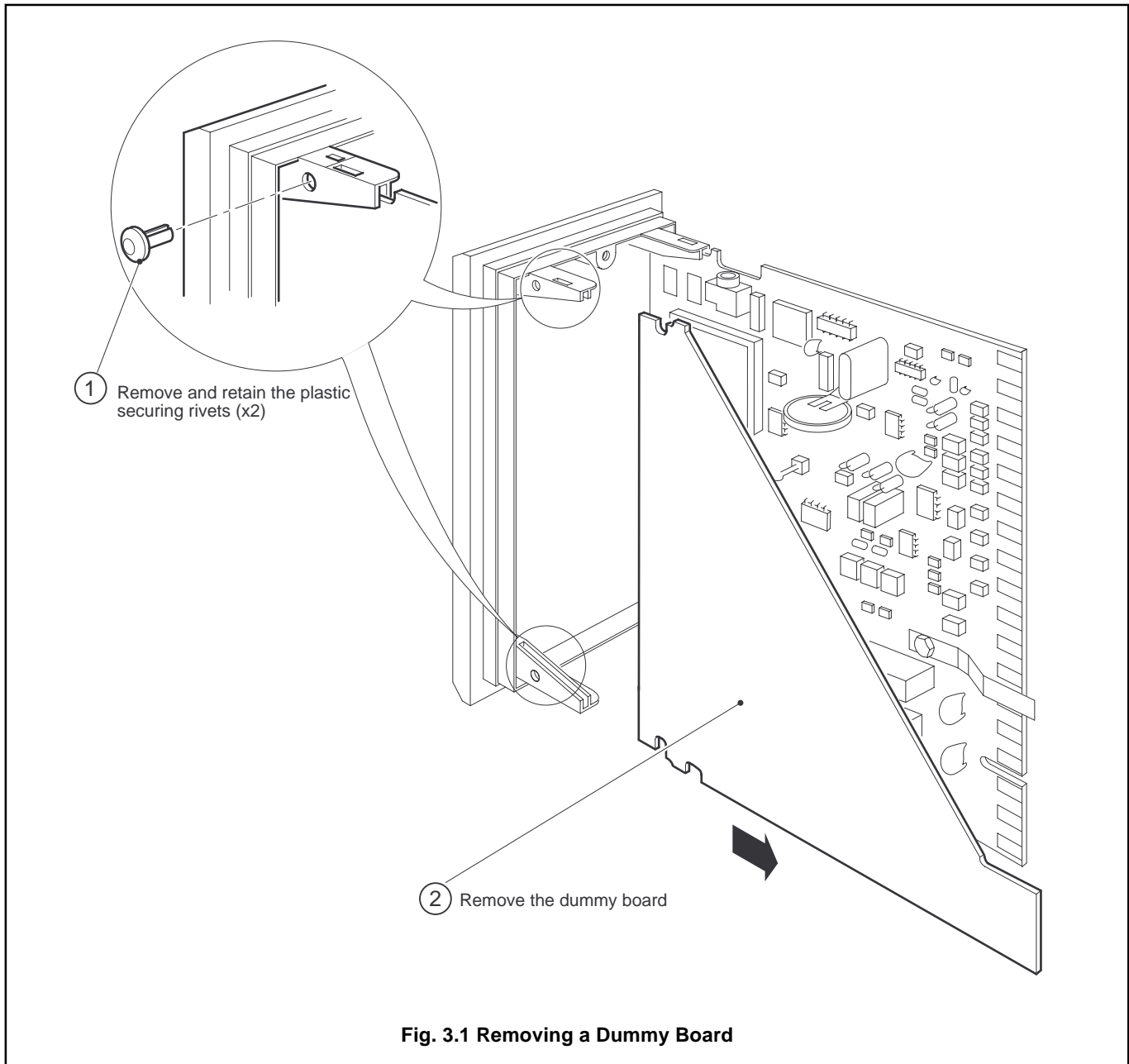


Information. The procedure for fitting an upgrade is the same for all upgrade types.



Warning. Before making any connections, ensure that the power supply, any powered control circuits and high common mode voltages are switched off.

- a) Disconnect all the power supplies from the instrument.
- b) Remove the instrument from the case – see Fig 2.1
- c) Remove the dummy board – see Fig 3.1
- d) Fit the option board – see Fig. 3.2
- e) Refit the instrument into the case by reversing the steps in Fig 2.1



...3 Fitting an Additional Module

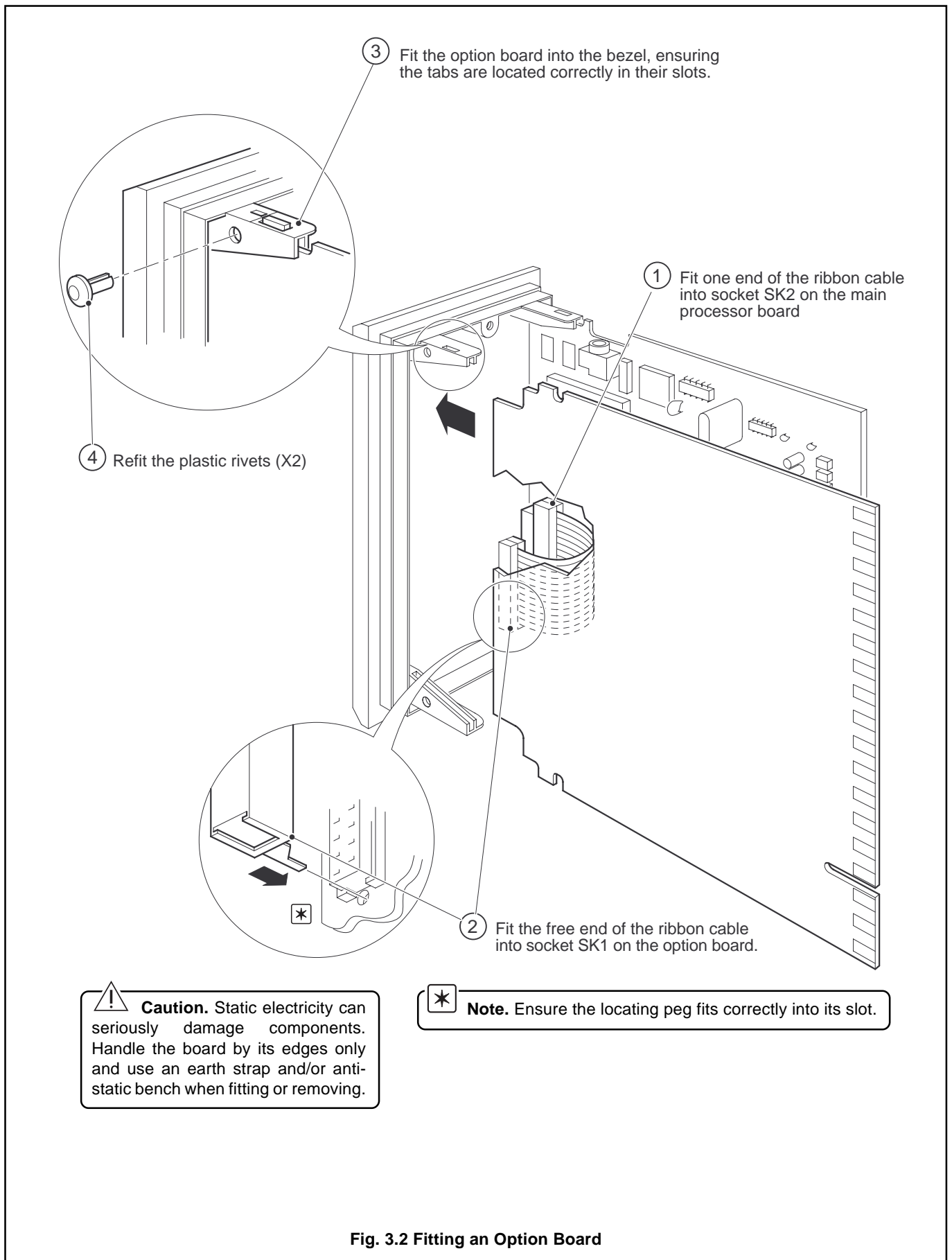


Fig. 3.2 Fitting an Option Board



ABB Kent-Taylor Ltd.

St. Neots,
Cambs.
England, PE19 3EU
Tel: +44 (0) 1480 475321
Fax: +44 (0) 1480 217948

ABB Instrumentation Inc.

PO Box 20550, Rochester
New York 14602-0550
USA
Tel: +1 716 292 6050
Fax: +1 716 273 6207

ABB Kent-Taylor SpA

22016 Lenno
Como
Italy
Tel: +39 (0) 344 58111
Fax: +39 (0) 344 56278

The Company's policy is one of continuous product improvement and the right is reserved to modify the information contained herein without notice.

© ABB 1997

Printed in UK (12.97)