

DATA SHEET

# PANEL 800 VERSION 6.2

The Panel 800 family comprises of user-friendly, intuitive and ergonomic operator panels that combine slim, space-saving dimensions with a comprehensive range of advanced functions. Designed to make process automation easy, all panels are equipped with advanced functionality for process and equipment control, maneuvered by just touching the LCD display.



# STANDARD PANELS



Panel	PP875	PP881	PP883	PP886	PP895
Article number	3BSE092977	3BSE092978	3BSE092979	3BSE092980	3BSE092981
Display size	7"	10.1"	12.1"	15.4"	21.5"
Display resolution, ratio	800 x 480 (16:9)	1024 x 600 (16:9)	1280 x 800 (16:10)	1280 x 800 (16:10)	1920 x 1080 (16:9)
Display colors	TFT-LCD, LED backlight				
Brightness (cd/m <sup>2</sup> )	350	500	400	450	250
Dimming	Yes				
Interaction type	Resistive touch				
Processor	ARM9 (1GHz)				
Main memory	512 MB	1 GB	1 GB	1 GB	2 GB
Application memory	1.5 GB (SSD)				
External storage media	1 x SD card slot (or SDHC with latest image loaded)				
Realtime clock	Yes				
Ethernet (shielded RJ 45)	1 x 10/100 Base-T	2 x 10/100 Base-T			
USB	1 x USB 2.0, max. 500mA	2 x USB 2.0, 500 mA			
Serial port 1/2	1 x RS232, 1 x RS422/485, 1 x RS485 (only if COM 2 is RS485)				
Dimension W×H×D (mm)	204 x 243 x 50	292 x 194 x 52	340 x 242 x 57	410 x 286 x 61	556 x 347 x 65
Cut-out dimension W×H (mm)	187 x 126	275 x 177	324 x 226	394 x 270	539 x 331
Mounting depth (mm) <sup>(1)</sup>	43 (143)		44 (144)		76 (176)
Mounting	Panel Mount and VESA 75 x 75				
Net weight (kg)	0.8	1.65	2.6	3.85	7.38
Frame material	White powder-coated aluminum				
Power supply	+24 VDC (18-32 VDC)				
Power consumption	14.4 W	21.6 W	28.8 W	31.2 W	45.6 W
Protection (front/rear)	IP65 / IP20				
Operating temperature	-10 °C to +60 °C				0 °C to + 50 °C
Relative operating humidity	5-85 % non-condensing				
Storage temperature	-20 °C to +70 °C				
Vibration and shock	1 G / 15 G				
Environmental and Certification <sup>(2)</sup>	CE, FCC, KCC, UL61010-2-201, DNV, KR, GL, LR, ABS, CCS				CE, UL61010-2-201, FCC, KCC
	RoHS compliance: DIRECTIVE/2011/65/EU				
	WEEE compliance: DIRECTIVE/2012/19/EU				

(1) Including clearance.

(2) For detailed information on each module, please visit:

[800xahardwareselector.automation.abb.com/](http://800xahardwareselector.automation.abb.com/)  
[symphonyplushardwareselector.automation.abb.com/](http://symphonyplushardwareselector.automation.abb.com/)  
[freelancehardwareselector.automation.abb.com/](http://freelancehardwareselector.automation.abb.com/)  
[compacthardwareselector.automation.abb.com/](http://compacthardwareselector.automation.abb.com/)

# BLACK PANELS

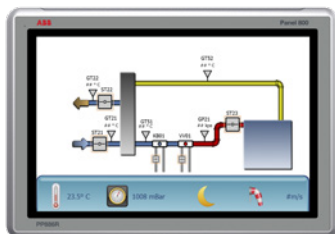


Panel	PP875M	PP875H	PP886M
Article number	3BSE092982	3BSE092983	3BSE092984
Display size	7"	7"	15.4"
Display resolution, ratio	800 x 480 (16:9)	800 x 480 (16:9)	1280 x 800 (16:10)
Display colors	TFT LCD, LED backlight		
Brightness (cd/m <sup>2</sup> )	500	1000	450
Dimming	Maritime optimized down to 0.5 cd/m <sup>2</sup>		
Interaction type	Resistive touch		
Processor	ARM9 (1.0 GHz)		
Main memory	512 MB	2GB	1 GB
Application memory	1.5 GB (SSD)		
External storage media	1 x SD card slot (or SDHC with latest image loaded)		
Realtime clock	Yes		
Ethernet (shielded RJ 45)	1 x 10/100 Base-T	2 x 10/100 Base-T	
USB	1 x USB 2.0, max. 500 mA	1 x USB Host 2.0, 500mA	2 x USB Host 2.0, 500 mA
Serial port	1 x RS232, 1 x RS422/485, 1 x RS485 (only if COM 2 is RS485)		
Dimension W×H×D (mm)	204 x 143 x 50		410 x 286 x 61
Cut-out dimension W×H(mm)	189 x 128		394 x 270
Mounting depth mm <sup>[1]</sup>	43 (143)		76 (176)
Mounting	Panel Mount and VESA 75 x 75		
Net weight (kg)	0.8		3.85
Frame material	Black powder-coated aluminum		
Power supply	24 VDC (18-32 VDC)		
Power consumption	14.4 W	21.6 W	31.2 W
Protection (front/rear)	IP65 / IP20		
Operating temperature	-10 °C to +60 °C		
Relative operating humidity	5-85 % non-condensing		
Storage temperature	-20 °C to +70 °C		
Vibration /shock	1 G / 15 G		
Environmental and Certification <sup>(1)</sup>	CE, FCC, KCC, UL61010-2-201, DNV, KR, GL, LR, ABS, CCS		
	RoHS compliance: DIRECTIVE/2011/65/EU		
	WEEE compliance: DIRECTIVE/2012/19/EU		

(1) For detailed information on each module, please visit:

- [800xhardwareselector.automation.abb.com/](http://800xhardwareselector.automation.abb.com/)
- [symphonyplushardwareselector.automation.abb.com/](http://symphonyplushardwareselector.automation.abb.com/)
- [freelancehardwareselector.automation.abb.com/](http://freelancehardwareselector.automation.abb.com/)
- [compacthardwareselector.automation.abb.com/](http://compacthardwareselector.automation.abb.com/)

# RUGGED PANELS



Panel	PP886R	PP887H / PP887H-CFC	PP887S
Article number	3BSE092985	3BSE092986 / 7PAA002011R1	3BSE092987
Display size	15.4"	15.4"	15.4"
Display resolution, ratio	1280 x 800 (16:10)	1280 x 800 (16:10)	1280 x 800 (16:10)
Display colors	TFT LCD		
Brightness (cd/m <sup>2</sup> )	450	1000	1000
Dimming	Maritime optimized down to 0.5 cd/m <sup>2</sup>		
Interaction type	Resistive touch		
Processor	ARM9 (800 MHz)	ARM9 (1 GHz)	ARM9 (1 GHz)
Main memory	1 GB	2 GB	2 GB
Application memory	3,5 GB (SLC)		
External storage media	1 x SD card slot (or SDHC with latest image loaded)		
Realtime clock	Yes		
Ethernet (shielded RJ 45)	1 x 10/100 Base-T	2 x 10/100 Base-T	2 x 10/100 Base-T (4 pin M12)
USB	2 x USB 2.0, max 500mA		
Serial port	1 x RS232, 1 x RS422/485	1 x RS232, 1 x RS422/RS485, 1 x RS485	
Dimension W×H×D (mm)	410 x 286 x 73		410 x 286 x 65
Cut-out dimension W×H(mm)	394 x 270		
Mounting depth mm <sup>(1)</sup>	43 (143)	76 (176)	
Mounting	Panel Mount		
Net weight (kg)	4.1	4.1	4.8
Frame material	Gray powder-coated aluminum		
Power supply	24 VDC (18 - 32 VDC)		
Power consumption	18 W	23 W	32 W
Protection (front/rear)	IP66/IP20	IP66/IP20 (CFC has a conformal coating on the printed circuit board)	<b>IP66/IP66</b> (NEMA 4X/ 12 and UL Type 4X/ 12)
Operating temperature	-30 °C to +70 °C		
Relative operating humidity	5-95 % non-condensing		
Storage temperature	-40 to +80 °C		
Vibration/shock	4 G / 40 G		
Environmental and Certification <sup>(1)</sup>	CE, FCC, KCC		
	UL-61010-2-201, UL 50E, Type 4x, Type 12		
	DNV, KR, GL, LR, ABS, CCS		
	Hazardous Location: UL/cUL C1D2, ATEX (Zone 2, Zone 22), IECEx (Zone 2, Zone 22)		
	RoHS compliance: DIRECTIVE/2011/65/EU		
	WEEE compliance: DIRECTIVE/2012/19/EU		

(1) For detailed information on each module, please visit:

[800xahardwareselector.automation.abb.com/](http://800xahardwareselector.automation.abb.com/)  
[symphonyplushardwareselector.automation.abb.com/](http://symphonyplushardwareselector.automation.abb.com/)  
[freelancehardwareselector.automation.abb.com/](http://freelancehardwareselector.automation.abb.com/)  
[compacthardwareselector.automation.abb.com/](http://compacthardwareselector.automation.abb.com/)

# SUPPORTED COMMUNICATION DRIVERS



Panel 800 Version 6 Communication Drivers	Type <sup>[1]</sup>
ABB COMLI Master Protocol	Master
ABB COMLI Slave Protocol	Slave
ABB Control Network MMS for AC 800M	Master
ABB Freelance	Master
ABB Modbus AC31	Master
ABB Modbus AC500	Master
ABB TotalFlow	Master
Allen-Bradley Ethernet/IP	Master
Allen-Bradley DF1	Point to Point
Allen-Bradley DH485	Token slave
Allen-Bradley MicroLogix Ethernet	Master
Allen-Bradley SLC/PLC5 Ethernet	Master
Altus Alnet I	Point to Point
Animatics SmartMotor	Master
Beckhoff ADS	Master
Bernecker+Rainer Driver	Point to Point
Bosch Rexroth IndraDrive	Master
CACTUS ASCII	Point to Point
CAN CanOpen (Built-in) <sup>[2]</sup>	Master/Slave
CAN FreeCAN (Built-in) <sup>[2]</sup>	Master
CoDeSys ARTI	Master
Control Techniques Unidrive	Master
CTC Serial Binary	Point to Point
Delta PLC Modbus ASCII	Master
Delta Tau PMAC/UMAC	Point to Point
DEMO	N/A
EMERSON Modbus Master RTU/ASCII	Master
Fatek Facon	Master
Galil DMC	Master
GE TCP/IP via SRTP	Master
GE Fanuc SNPX	Master
Grundfos GENibus <sup>[5]</sup>	Master
G&L Motion Control	Master
Hitachi H-series HCOMM	Point to Point

Panel 800 Version 6 Communication Drivers	Type <sup>[1]</sup>
IAI X-SEL	Master
IDEC Computer Link	Point to Point
Johnson Controls J CONTROL	Master
KEB COMBIVERT	Master
KEYENCE KV-Series	Master
Koyo DirectNET	Master
Koyo ECOM	Master
Koyo K-Sequence	Point to Point
Lenze LECOM A/B	Master
LS Glofa	Master
LS Master-K	Master
MATSUSHITA MEWTOCOL-COM	Master
MELSEC MC protocol	Master
MODICON Modbus Master	Master
MODBUS Slave RTU/TCP	Slave
Omron Ethernet IP	Master
Omron FINS	Master
Omron Host Link	Master
PROFIBUS, Generic Profibus DP <sup>[3]</sup>	Slave
SAIA S-BUS Serial/Ethernet	Master
Schneider Electric Modbus	Master
Schneider Electric TSX Uni-Telway	Token Slave
SIMATIC S5 PG/AS511	Point to Point
SIMATIC S7 ISO over TCP/IP	Master
SIMATIC S7 200 PPI	Master
SIMATIC S7 MPI Direct <sup>[4]</sup>	Token
SIMATIC S7 MPI (HMI Adapter)	Point to Point
SIMATIC TI500	Point to Point
VIGOR Vigor M/VB-Series	Master
VIGOR Vigor VS Series	Point to Point
WAGO Modbus TCP	Master
Yamaha VIP	Point to Point
Yaskawa Memobus Master	Master
Yokogawa FA-M3	Master

[1] Type of communication:

- Master: The panel is a master/client and asks one or many slave/servers. (also Ethernet drivers)
- Slave: The panel is a slave/server and answers.
- Point to Point: The panel asks but only one slave; there is no support for multi-drop.
- Token slave: A token network with the possibility for many panels to one PLC, the PLC is considered a slave.
- Token: Supports many panels and many PLCs at the same time on the network.

[2] Supported with the following panels: PP881, PP883, PP886, PP895, PP875H, PP886M, PP886R, PP887H and PP887S.

[3] Supported with PP871, PP874, PP874K, PP874M, PP875, PP875H, PP875M, PP877, PP877K, PP881, PP882, PP883, PP885, PP886, PP886M and PP895.

[4] Supported with the following panels: PP871, PP874, PP877, PP874K, PP877K and PP874M.

[5] Go to update drivers from internet via Panel Builder 800 Ethernet

---

**[solutions.abb/800xa](https://solutions.abb/800xa)**  
**[solutions.abb/compactproductsuite](https://solutions.abb/compactproductsuite)**  
**[solutions.abb/freelance](https://solutions.abb/freelance)**  
**[solutions.abb/symphonyplus](https://solutions.abb/symphonyplus)**  
**[compacthardwareselector.com](https://compacthardwareselector.com)**  
**[freelancehardwareselector.com](https://freelancehardwareselector.com)**  
**[800xahardwareselector.com](https://800xahardwareselector.com)**  
**[symphonyplushardwareseletor.com](https://symphonyplushardwareseletor.com)**

---

800xA and Symphony Plus is a registered trademark of ABB. All rights to other trademarks reside with their respective owners.  
We reserve the right to make technical changes to the products or modify the contents of this document without prior notice. With regard to purchase orders, the agreed particulars shall prevail. ABB does not assume any responsibility for any errors or incomplete information in this document.

We reserve all rights to this document and the items and images it contains. The reproduction, disclosure to third parties or the use of the content of this document – including parts thereof – are prohibited without ABB's prior written permission.

Copyright © 2025 ABB  
All rights reserved