

# Refining & Petrochemicals Middle East

NEWS, DATA AND ANALYSIS FOR THE REFINING AND PETROCHEMICAL INDUSTRIES

An ITP Business Publication

NOVEMBER 2016

**A SPECIAL REPORT FROM REFINING & PETROCHEMICALS ME**



**KNOWLEDGE PARTNER**

ABB unveils latest high-tech solution



+

**MARKET FOCUS**

Big gains for Wireless and IoT

# INDUSTRY 4.0

THE FOURTH INDUSTRIAL REVOLUTION IS UPON US AND NOW IS THE TIME TO ACT

# THE BEST OF INNOVATION

*ABB's high performance connected gas compression modules are designed for improved efficiency and driving down cost*



ABB is introducing a new line of gas compression modules designed for relentless and efficient operation.

**T**he low price of oil is driving the hydrocarbon production sector to search for higher efficiency and better risk mitigation. In order to achieve this goal, more end users and EPC contractors are looking for modularised solutions that allow assembling and testing of the equipment before delivery on site, reducing unexpected delays and costs.

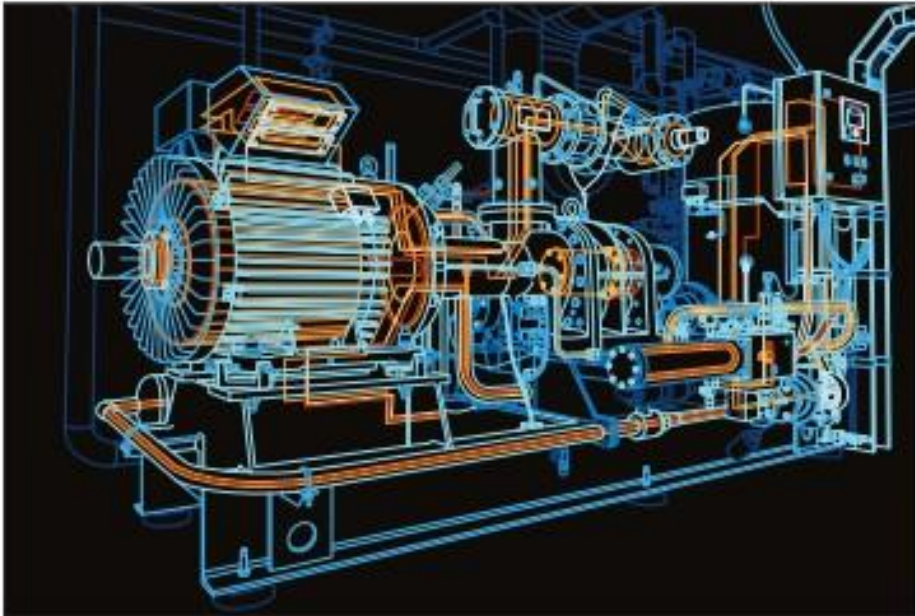
ABB has been an innovator in the oil,

gas, chemical and petrochemical sector for decades, providing specialised industrial solutions for the production, processing, transportation, storage and distribution of high value hydrocarbons.

Moreover, ABB has always been an innovation leader in the rotating and turbo-machinery field – Brown Boveri Corp (one of the two founding companies that merged to form ABB) designed and built the very first industrial gas turbine.

## ABOUT THE COMPANY:

ABB is a leading global technology company in power and automation that enables utility, industry, and transport and infrastructure customers to improve their performance while lowering environmental impact. The ABB Group of companies operates in roughly 100 countries and employs about 135,000 people.



ABB's gas compression modules are available in a power range from 200KW up to 7.5MW.

Today, ABB offers the latest technologies for connected devices and cloud-based analytics to grant predictable and efficient operation to rotating machines. In line with its commitment to providing more advanced solutions to solve customer challenges, ABB is introducing a line of gas compression modules designed for relentless and efficient operation.

These modules integrate reciprocating compressors with advanced power and control solutions including the high-efficiency ABB electrical driving system (fixed or variable speed) and the ABB high-integrity control system; these solutions are engineered to ensure the lowest operational costs and reduce the need for periodic maintenance. Each module also includes all the ancillary systems required for gas treatment, such as filtration and cooling systems.

The ABB gas compression modules are available in a power range from 200KW up to 7.5MW and fulfill the requirements of the production, processing, transportation, storage and distribution of hydrocarbons and special gasses. Each module meets the most stringent requirements of dealing with different gas types, including wet, sour and acid gasses, and is suitable for both outdoor and indoor conditions.

To support the customers' needs, the modules can be supplied as a stand-alone unit or as part of a wide turn-key project, where ABB provides a full set of solutions covering all the automation and electrical

systems, as well as construction and assembly works.

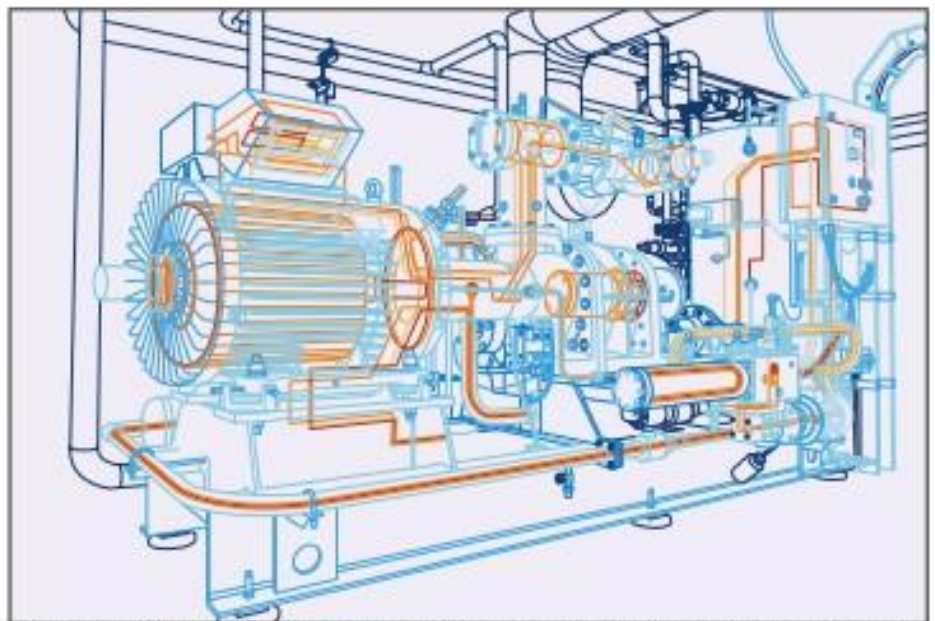
ABB's extensive engineering expertise coupled with a wide range of available products allows the company to manufacture most of the equipment and design and assemble the module. ABB has partnered with Ariel Corporation, world leader in the reciprocating compressors market, to supply the compressor equipment.

ABB's efforts to support efficient and reliable operations for customers does not end with the delivery of the compression

**“ABB has been an innovator in the oil, gas, chemical and petrochemical sector for decades, providing specialised industrial solutions for the production, processing, transportation, storage and distribution of hydrocarbons and petroleum products.”**

module: each module is enabled for connection to ABB Collaborative Support Network infrastructure which enables advanced monitoring and diagnostic services all around the world.

The services provided by ABB Collaborative Support Network are focused on sustaining the performance of the gas compression module by assessing the health of the equipment and enabling troubleshooting and optimising services locally or remotely. The available services include remote analysis of the machine operation and machine tuning to adjust to the current status of the plant. This service enables to achieve the highest possible efficiency without mechanical or process changes of the machine. **ABB**



ABB's Support Network enables advanced monitoring and diagnostics on equipment around the world.