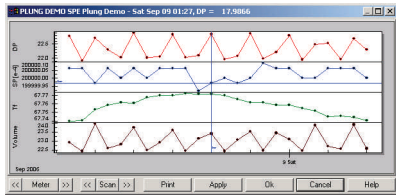


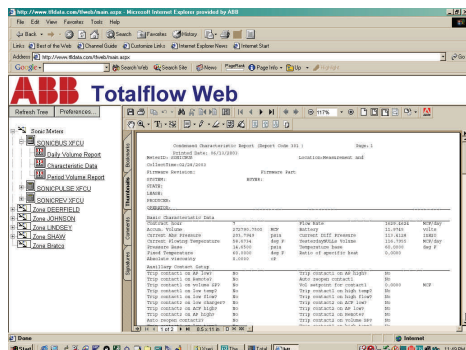
WINCCU - EFM HOST

Complete Gas Volume/Energy Data Management

- API21.1 Compliant Audit Trail
- 13 standard reports (e.g. Hourly / Daily Volume, missing data, field balance)
- User Configurable Variance Reports
- Multiple Export formats (e.g. CSV, ASCII, PGAS, CFX)



- Importation of non-Totalflow EFM data (via XML)
- Full featured gas volume editor
- Microsoft Access or SQL Server databases
- LAN/WAN multi-user capability
- Remote Communications
 - ◊ Multiple Communication Port Controller
 - ◊ Radio, Telco, CDPD, Satellite, and more
 - ◊ Automatic Retry Groups
 - ◊ Exception Reporting Support
 - ◊ TCP/IP socket interface
- Task Scheduler
 - ◊ Status Polls, EFM Collects
 - ◊ Batch Configuration of field devices
 - ◊ Reporting, emailing



WEBCCU INTERNET / INTRANET WINCCU ADD-ON

- Browser presentation capability for WinCCU database
- Microsoft .net Technology
- Post Near Real-time Data to Internet Site
- Graphical presentation of historically trended data
- Standard WinCCU Reports
 - ◊ Flow Data, Alarms, Events, Characteristics, Trends
- Flexible, "Active Reports" development environment
- Flexible, ChartFX graphing environment
- Demand Polling of field equipment
- Configuration of field equipment

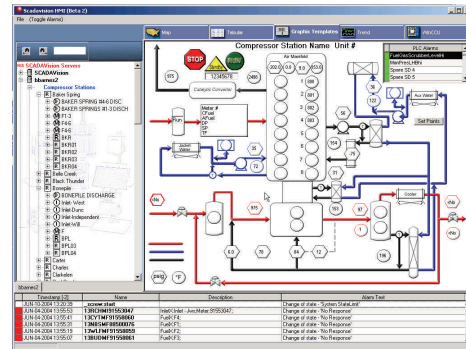
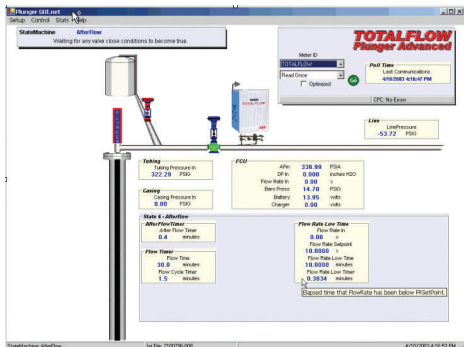


ABB SCADA VANTAGE

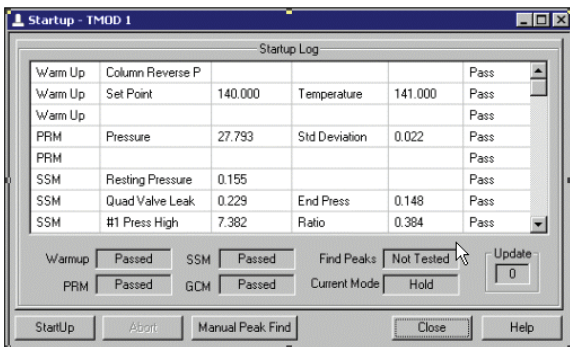
- Graphical User Interface
- Object Oriented Real Time Database (SQL Query) support
- Visual basic application environment
- Multiple device protocol support
- Easily integrated with existing SCADA systems
- Template structure for simple replication of wells, locations, facilities
- Map based navigation
- LAN/WAN/Internet network ready
- Remote administration of multiple servers
- Redundant, hot transfer server
- Unlimited Client License

TF.NET INTERNET / INTRANET DATABASE NAVIGATION and VIEWING

- Browser presentation capability for virtually any database
- Microsoft.net Technology



- Post Near Real-time Data to Internet Site
- Graphical presentation of historically trended data
- Standard WinCCU Reports
 - ◊ Flow Data, Alarms, Events, Characteristics, Trends
- Flexible, Active Report development environment
- Flexible, ChartFX graphing environment
- Demand Polling of field equipment
- Configuration of field equipment



PLUNGER GUI PLUG-IN

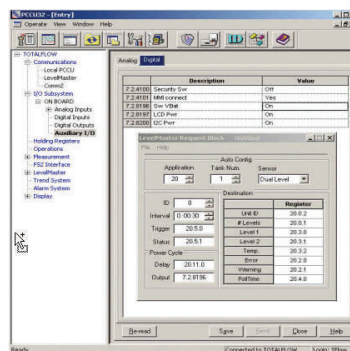
- Plugs into WinCCU ID Database
- Configuration wizards to simplify plunger logic configuration
- Context sensitive GUI presentation for clean user interface
- Remote or Local operation
- Leverages Microsoft.net Technology
- Reporting of plunger lift statistics
- Simple installation and configuration

BTU MMI CHROMATOGRAPH CONFIGURATION

- Windows Application
- Local or Remote operation
- Btu Transmitter Calibration
- Data Collect and reporting
- View Chromatograms
- Export to Excel
- Configure Cycle Times, other Parameters
- Troubleshoot Btu transmitter

PCCU NGC CONFIGURATION

- Windows Application
- Local or Remote operation
- NGC Calibration



- Data Collect and reporting
- View Chromatograms
- Export to Excel
- Configure Cycle Times, other Parameters
- Troubleshoot NGC

LEVELMASTER

- Windows Application
- Local Connect to Totalflow Tank Level Sensors
- Configure Communications
- Establish ID
- Calibrate
- Set Up of Surface and Interface Floats
- View Level and Temperature

Power and Productivity
for a Better World. TM

www.abb.com/totalflow
www.abb.us
www.abb.com



ABB Inc.
Totalflow Products
7051 Industrial Blvd.
Bartlesville, OK 74006
Tel: (918) 338-4888
Fax: (918) 338-4699
(800) 442-3097

ABB Inc.
Totalflow Products
433 Northpark Central Dr., Ste. 100
Houston, TX 77073
Tel: (281) 869-5212
Fax: (281) 869-5203
(800) 442-3097

For more information,
please contact your
local ABB Totalflow
representative or visit
our website.