



# Distribution Enclosures UNIKIT



# Distribution Enclosures UNIKIT

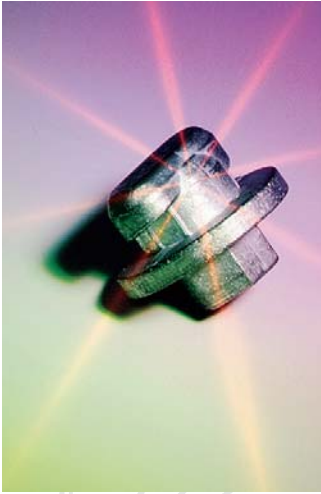
## Contents

General .....	2
Technical details .....	3
Ordering details	
Unikit 150 / 250 .....	3/4
Accessories .....	5/7
Spare Parts .....	8
Order example .....	9
Complete enclosed solutions .....	10/12

# Distribution Enclosures

## UNIKIT

### General



#### Easy to transport & fast to assemble

UNIKIT, the innovative enclosure system offers maximum safety, functionality, flexibility, quick and simple assembly.

UNIKIT is an extendable system where standardised components can be assembled quickly and cost-effectively into a complete individual panel.

A unique quick-fasten element lies at the heart of the quick assembly system. It connects the individual enclosure sections to one another firmly and securely by a simple turning action. No more drilling, no more screwing and bolting! Assembly time is reduced. This quick-fastener element guarantees the grounding of the enclosure after assembly. Its special construction makes it completely resistant to vibration.

#### UNIKIT convenience

For your convenience UNIKIT is offered in two variations: completely assembled cabinets or as a flat pack kit for customer assembly.

Whether used for in-house installations or industrial applications, the extremely well designed UNIKIT system offers a host of decisive advantage:

- Pleasing appearance with attractive details
- No visible mounting or connection elements
- Enclosure covers and bottoms are pre-punched
- A multitude of usable modules: e.g. EIB modules

Flat pack versions offer additional benefits:

- A clear and logically structured packaging system
- Low freight costs due to reduced transportation volume
- Quick and simple assembly
- Easily understandable assembly instructions
- Minimal packaging material
- Outstanding material and workmanship quality



# Distribution Enclosures - UNIKIT

## Sub-sub distribution - Complete built up empty enclosures

### Technical details- Ordering details



1SKC 020 001 F0001



1SKC 020 002 F0001

#### Technical Details:

Standard (Regulations) : IEC 439-1/EN 60439-1/BS EN 60439-1&3

#### Max. load

Wall mounted (UNIKIT 150) : 250 A

Free standing (UNIKIT 250) : 630 A

Max. voltage : 400V ac, 50/60 Hz

Rated insulation voltage Ui : 1000 V AC

Rated operational voltage Ue : 690 V AC

Degree of protection : IP 30 without Door

IP 41 with Door

IP 54 on request

Colour : RAL 7035 (1013 available on request)

Rated short time withstand current: 35 KA

Enclosure material : Cold rolled sheet steel 1.5 mm  
(Aluzinc steel on request)

### UNIKIT 150 In = 250 A

#### Plain door

Type	Dimensions H x W x D mm	Ordering details		Weight kg
		Type Code	Type No.	
Wall mounted size 1	700 x 700 x 150	GDUN150-01	1SKU 124 152 C0001	32
Wall mounted size 2	1000 x 700 x 150	GDUN150-02	1SKU 224 152 C0001	39

#### Transparent door

Type	Dimensions H x W x D mm	Ordering details		Weight kg
		Type Code	Type No.	
Wall mounted size 1	700 x 700 x 150	GDUN150-01T	1SKU 124 152 C0011	32
Wall mounted size 2	1000 x 700 x 150	GDUN150-02T	1SKU 224 152 C0011	39

### UNIKIT 250 In = 630 A

#### Plain door

Type	Dimensions H x W x D mm	Ordering details		Weight kg
		Type Code	Type No.	
Free standing size 3	700 x 700 x 300	GDUN250-03	1SKU 302 152 C0001	42
Free standing size 4	1000 x 700 x 300	GDUN250-04	1SKU 404 152 C0001	54
Free standing size 5	1300 x 700 x 300	GDUN250-05	1SKU 508 152 C0001	71
Free standing size 6	1900 x 700 x 300	GDUN250-06	1SKU 612 152 C0001	96

#### Transparent door

Type	Dimensions H x W x D mm	Ordering details		Weight kg
		Type Code	Type No.	
Free standing size 3	700 x 700 x 300	GDUN250-03T	1SKU 302 152 C0011	42
Free standing size 4	1000 x 700 x 300	GDUN250-04T	1SKU 404 152 C0011	54
Free standing size 5	1300 x 700 x 300	GDUN250-05T	1SKU 508 152 C0011	71
Free standing size 6	1900 x 700 x 300	GDUN250-06T	1SKU 612 152 C0011	96

# Distribution Enclosures - UNIKIT

Sub-sub distribution - Kits for empty enclosures

## Ordering details



1SKC 020 003 F0001

### UNIKIT 150 In = 250 A

#### Plain door

Type	Dimensions H x W x D mm	Ordering details		Weight kg
		Type Code	Type No.	
Wall mounted size 1	700 x 700 x 150	GDUN150-01KP	1SKU 124 152 C0009	32
Wall mounted size 2	1000 x 700 x 150	GDUN150-02KP	1SKU 224 152 C0009	39

#### Transparent door

Type	Dimensions H x W x D mm	Ordering details		Weight kg
		Type Code	Type No.	
Wall mounted size 1	700 x 700 x 150	GDUN150-01KT	1SKU 124 152 C0019	32
Wall mounted size 2	1000 x 700 x 150	GDUN150-02KT	1SKU 224 152 C0019	39

### UNIKIT 250 In = 630 A

#### Plain door

Type	Dimensions H x W x D mm	Ordering details		Weight kg
		Type Code	Type No.	
Free standing size 3	700 x 700 x 300	GDUN250-03KP	1SKU 302 152 C0009	42
Free standing size 4	1000 x 700 x 300	GDUN250-04KP	1SKU 404 152 C0009	54
Free standing size 5	1300 x 700 x 300	GDUN250-05KP	1SKU 508 152 C0009	71
Free standing size 6	1900 x 700 x 300	GDUN250-06KP	1SKU 612 152 C0009	96

#### Transparent door

Type	Dimensions H x W x D mm	Ordering details		Weight kg
		Type Code	Type No.	
Free standing size 3	700 x 700 x 300	GDUN250-03KT	1SKU 302 152 C0019	42
Free standing size 4	1000 x 700 x 300	GDUN250-04KT	1SKU 404 152 C0019	54
Free standing size 5	1300 x 700 x 300	GDUN250-05KT	1SKU 508 152 C0019	71
Free standing size 6	1900 x 700 x 300	GDUN250-06KT	1SKU 612 152 C0019	96



1SKC 020 004 F0001



1SKC 020 005 F0001

# Distribution Enclosures - UNIKIT 150/250

## Accessories

### Ordering details



#### Plain internal covers

Height mm	Suitable for	Ordering details		Weight kg
		Type Code	Type No.	
50	EUN-150/250	GDUN-AC050	1SKA 514 000 R0001	0.35
100	EUN-150/250	GDUN-AC100	1SKA 514 000 R0002	0.70
150	EUN-150/250	GDUN-AC150	1SKA 514 000 R0003	1.05
200	EUN-150/250	GDUN-AC200	1SKA 514 000 R0004	1.40
300	EUN-150/250	GDUN-AC300	1SKA 514 000 R0005	2.10
400	EUN-250	GDUN250-AC400	1SKA 514 000 R0006	2.80
500	EUN-250	GDUN250-AC500	1SKA 514 000 R0007	3.50

#### Slotted internal covers for incoming devices

Incoming MCCB Type	location	Height mm	Suitable for	Ordering details		Weight kg
				Type Code	Type No.	
T1	middle	300	EUN-150/250	GDUN-AS1T1M3	1SKA 515 000 R0001	2.10
T3	middle	300	EUN-250	GDUN250-AS1T3M3	1SKA 515 000 R0002	2.80
T4	middle	400	EUN-250	GDUN250-AS1T4M4	1SKA 515 000 R0003	2.80
T5	middle	400	EUN-250	GDUN250-AS1T5M4	1SKA 515 000 R0004	2.80
T5	side	400	EUN-250	GDUN250-AS1T5S4	1SKA 515 000 R0005	2.80
T6	side	400	EUN-250	GDUN250-AS1T6S4	1SKA 515 000 R0006	2.80

#### Slotted internal covers for outgoing devices

Outgoing Type	Qty.	Busbar location	Height mm	Suitable for	Ordering details		Weight kg
					Type Code	Type No.	
T1	4	middle	300	EUN-150/250	GDUN-AS4T1M3	1SKA 515 000 R0011	2.10
T1	6	middle	400	EUN-250	GDUN250-AS6T1M4	1SKA 515 000 R0012	2.80
T3	2	side	300	EUN-250	GDUN250-AS2T3S3	1SKA 515 000 R0013	2.10
T3	3	side	400	EUN-250	GDUN250-AS3T3S4	1SKA 515 000 R0014	2.80
1P MCB	28	-	200	EUN-150/250	GDUN-ASMCB2	1SKA 515 000 R0021	1.40
3 indication lamps with fuses*			100	EUN-150/250	GDUN-ASLP1	1SKA 515 000 R0031	0.70
for measuring and indications*			300	EUN-250	GDUN250-ASME3	1SKA 515 000 R0032	2.10
for measuring/kWh and indications*			400	EUN-250	GDUN250-ASMK4	1SKA 515 000 R0033	2.80

\* Opening cover with slotted location to fit indication or measuring, it doesn't include the lamps or measuring devices.

#### Internal back plates for incoming vertical fixing

Incoming Type	Qty.	Busbar location	Suitable for	Ordering details		Weight kg
				Type Code	Type No.	
T1	1	middle	EUN-150/250	GDUN-ABP1T1M	1SKA 520 000 R0001	
T3	1	middle	EUN-250	GDUN250-ABP1T3M	1SKA 520 000 R0011	
T4	1	middle	EUN-250	GDUN250-ABP1T4M	1SKA 520 000 R0021	
T5	1	middle	EUN-250	GDUN250-ABP1T5M	1SKA 520 000 R0031	
T5	1	side	EUN-250	GDUN250-ABP1T5S	1SKA 520 000 R0041	
T6	1	side	EUN-250	GDUN250-ABP1T6S	1SKA 520 000 R0051	

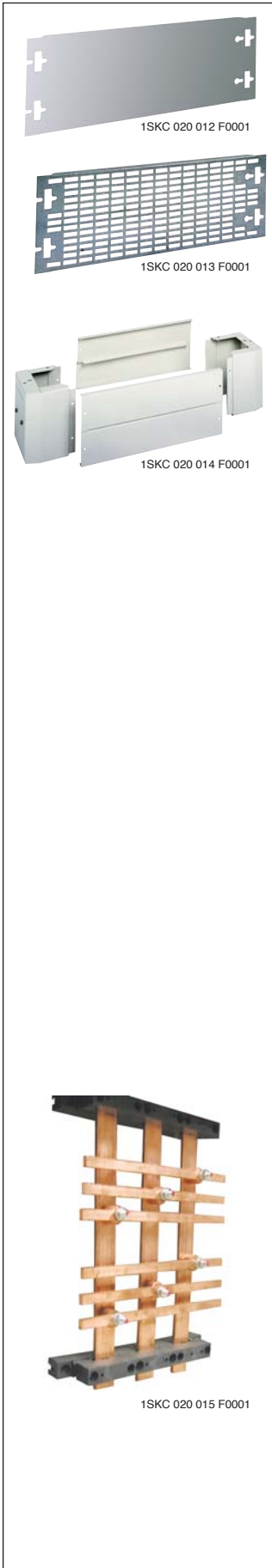
#### Internal back plates for outgoing horizontal fixing

Outgoing Type	Qty.	MCCB's location	Suitable for	Ordering details		Weight kg
				Type Code	Type No.	
T1	4	middle	EUN-150/250	GDUN-ABP4T1M	1SKA 520 000 R0061	
T1	6	middle	EUN-250	GDUN250-ABP6T1M	1SKA 520 000 R0071	
T3	2	side	EUN-250	GDUN250-ABP2T3S	1SKA 520 000 R0081	
T3	3	side	EUN-250	GDUN250-ABP3T3S	1SKA 520 000 R0091	

# Distribution Enclosures - UNIKIT 150/250

## Accessories

### Ordering details (continued)



#### Mounting plate

Description	Dimensions H x W x D mm	Ordering details		Weight kg
		Type Code	Type No.	
Blank mounting plate	200 x 600 x 14	GDUN-ABLKP2	1SKA 528 000 R0200	
	300 x 600 x 14	GDUN-ABLKP3	1SKA 528 000 R0300	
	400 x 600 x 14	GDUN-ABLKP4	1SKA 528 000 R0400	
Perforated mounting plate	200 x 600 x 14	GDUN-ABMP2	1SKA 518 000 R0200	
	300 x 600 x 14	GDUN-ABMP3	1SKA 518 000 R0300	
	400 x 600 x 14	GDUN-ABMP4	1SKA 518 000 R0400	

#### Plinths & cable extension kits (for Unikit EUN-250)

Description	Dimensions H x W x D mm	Ordering details		Weight kg
		Type Code	Type No.	
Plinth complete with plain flange plate	200 x 700 x 300	GDUN250-ABA730	1SKA 525 000 R0001	
	200 x 400 x 300	GDUN250-ABA430	1SKA 525 000 R0010	
Side extension cable chambers kit with door	700 x 400 x 300	GDUN250-AKS07	1SKA 530 000 R0007	
(can be assembled left or right hand side)	1000 x 400 x 300	GDUN250-AKS10	1SKA 530 000 R0010	
	1300 x 400 x 300	GDUN250-AKS13	1SKA 530 000 R0013	
	1900 x 400 x 300	GDUN250-AKS19	1SKA 530 000 R0019	

#### Joining kit side by side (for connecting two-cubicles or cubicle with side ext. chamber, side by side)

Used for	Dimensions H x D mm	Ordering details		Weight kg
		Type Code	Type No.	
Panel size 3	700 x 300	GDUN250-AJS3	1SKA 580 000 C1001	
Panel size 4	1000 x 300	GDUN250-AJS4	1SKA 580 000 C1002	
Panel size 5	1300 x 300	GDUN250-AJS5	1SKA 580 000 C1003	
Panel size 6	1900 x 300	GDUN250-AJS6	1SKA 580 000 C1004	

#### Top plate for cable entry or outgoing from top

Used for	Ordering details		Weight kg
	Type Code	Type No.	
Unikit 250 size 3-6	GDUN250-ATBTE7	1SKA 590 000 C1007	
Side extension chamber	GDUN250-ATBTE4	1SKA 590 000 C1004	

#### Main busbar kits for middle busbar location

Outgoing Type	Qty.	Busbar Rating A	Suitable for Cabinet	Ordering details		Weight kg
				Type Code	Type No.	
T1	4	250	size 4	GDUN-A204T1M	1SKA 510 000 R0003	
T1	6	250	size 4	GDUN-A206T1M	1SKA 510 000 R1003	
T1	8	250	size 5	GDUN-A208T1M	1SKA 510 000 R2003	
T1	10	250	size 5	GDUN-A210T1M	1SKA 510 000 R3003	
T1	12	250	size 6	GDUN-A212T1M	1SKA 510 000 R4003	
T1	4	400	size 5	GDUN-A404T1M	1SKA 510 000 R0002	
T1	6	400	size 5	GDUN-A406T1M	1SKA 510 000 R1002	
T1	8	400	size 5	GDUN-A408T1M	1SKA 510 000 R2002	
T1	10	400	size 6	GDUN-A410T1M	1SKA 510 000 R3002	
T1	12	400	size 6	GDUN-A412T1M	1SKA 510 000 R4002	

# Distribution Enclosures - UNIKIT 150/250

## Accessories

### Ordering details (continued)



1SKC 020 016 F0001

#### Main busbar kits for side busbar location

Outgoing Type	Qty.	Busbar Rating A	Suitable for Cabinet
T3	2	400	size 5
T3	3	400	size 5
T3	4	400	size 5
T3	5	400	size 6
T3	6	400	size 6
T3	7	400	size 6
T3	2	630	size 5
T3	3	630	size 5
T3	4	630	size 6
T3	5	630	size 6
T3	6	630	size 6
T3	7	630	size 6

Ordering details	
Type Code	Type No.
GDUN-A402T3S	1SKA 510 000 R0402
GDUN-A403T3S	1SKA 510 000 R1402
GDUN-A404T3S	1SKA 510 000 R2402
GDUN-A405T3S	1SKA 510 000 R3402
GDUN-A406T3S	1SKA 510 000 R4402
GDUN-A407T3S	1SKA 510 000 R5402
GDUN-A602T3S	1SKA 510 000 R0001
GDUN-A603T3S	1SKA 510 000 R1001
GDUN-A604T3S	1SKA 510 000 R2001
GDUN-A605T3S	1SKA 510 000 R3001
GDUN-A606T3S	1SKA 510 000 R4001
GDUN-A607T3S	1SKA 510 000 R5001

Weight  
kg



1SKC 020 017 F0001

#### Neutral bars kit

Rating A	Suitable for UNIKIT size
250	size 3-6
400	size 3-6
630	size 3-6

Ordering details	
Type Code	Type No.
GDUN-A2NB	1SKA 512 000 R0003
GDUN-A4NB	1SKA 512 000 R0002
GDUN-A6NB	1SKA 512 000 R0001

Weight  
kg



1SKC 020 018 F0001

#### Earth bars kit

Rating A	Suitable for UNIKIT size
250	size 3-6
400	size 3-6
630	size 3-6

Ordering details	
Type Code	Type No.
GDUN-A2PEB	1SKA 513 000 R0003
GDUN-A4PEB	1SKA 513 000 R0002
GDUN-A6PEB	1SKA 513 000 R0001

Weight  
kg



1SKC 020 019 F0001

#### Switch bars kit

Used for	Suitable for UNIKIT size
T1-160 A	size 3-6
T3-250 A	size 3-6
T4-250 A	size 3-6
T5-400 A	size 3-6
T6-630 A	size 3-6

Ordering details	
Type Code	Type No.
GDUN-ACBVT1	1SKA 511 000 R0160
GDUN-ACBVT3	1SKA 511 000 R0250
GDUN-ACBVT4	1SKA 511 000 R0255
GDUN-ACBVT5	1SKA 511 000 R0400
GDUN-ACBVT6	1SKA 511 000 R0630

Weight  
kg

The kit contains 3 pcs for L1/L2/L3.

#### 19" rack chassis

Used for	Dimensions H x W x D mm
Panel size 3	700 x 700 x 300
Panel size 4	1000 x 700 x 300
Panel size 5	1300 x 700 x 300
Side chamber	700 x 400 x 300

Ordering details	
Type Code	Type No.
GDUN-ARAC3	1SKA 570 000 C0773
GDUN-ARAC4	1SKA 570 000 C1073
GDUN-ARAC5	1SKA 570 000 C1373
GDUN-ARAC0	1SKA 570 000 C0743

Weight  
kg



# Distribution Enclosures - UNIKIT 150/250

## Spare Parts

### Ordering details

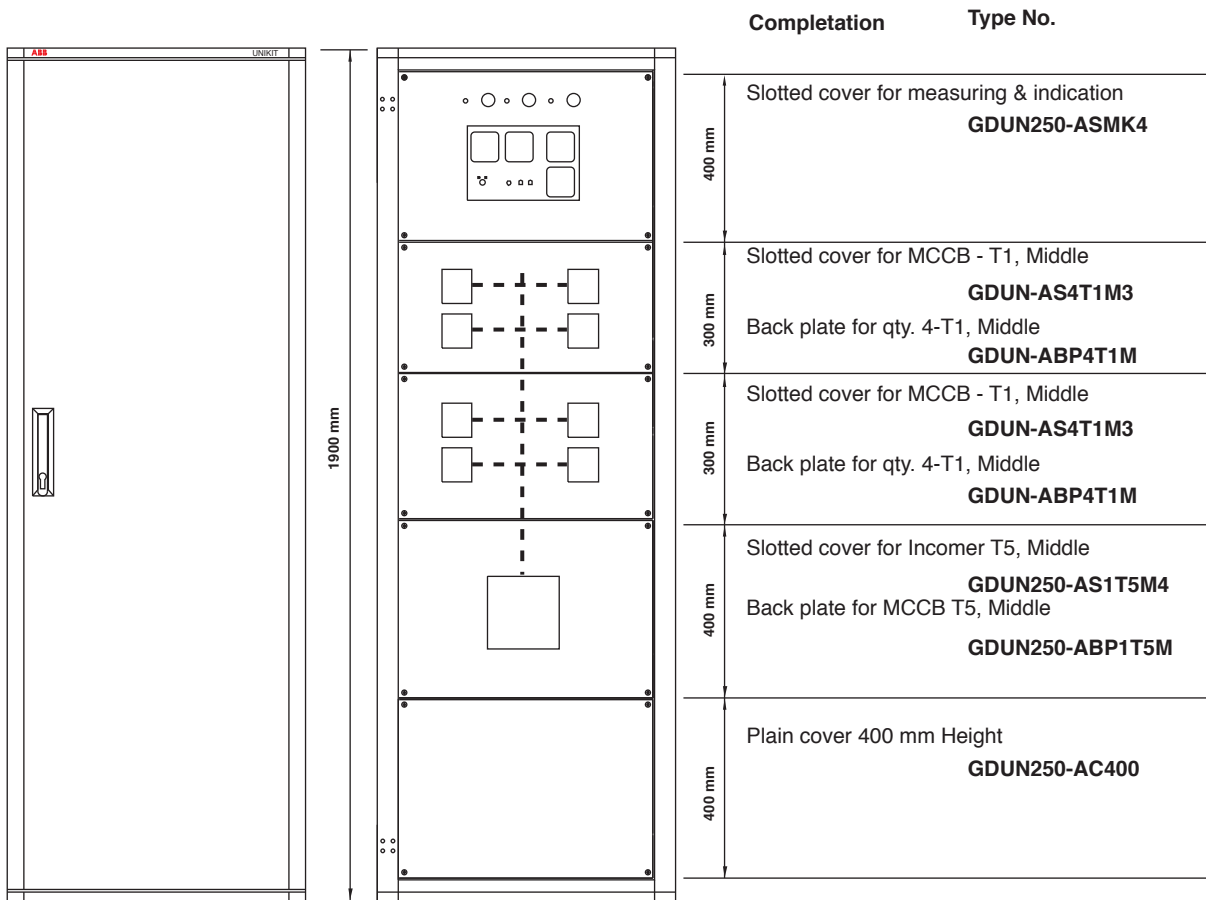


Description	Ordering details		Packing unit	Weight kg
	Type Code	Type No.		
Busbar holder - sheet steel	GDUN-SBH730	1SKU 054 508 R3080	10	
NPE Insulator - 35	GDUN-SIN35	1SKU 056 601 R0350	75	
NPE Insulator - 60	GDUN-SIN60	1SKU 056 601 R0600	50	
Door lock complete with 2 keys	GDUN-SCELA	1SKU 059 408 R1002	1	
Decorative corners kit	GDUN-SCOR20	1SKU 056 622 R0020	20	
Hinge-set kit	GDUN-SHIN	1SKU 051 902 R7035	10	
Decorative plates - sheet steel	GDUN-SSH70F	1SKA 517 000 R0001	2	
Plain flange plate	GDUN-SZP55E	1SKU 054 508 R0001	1	0.40
Quick fastener element kit	GDUN-SQF4	1SKU 051 901 R0004	90	
Common DIN-rail	GDUN-SDIN7	1SKU 053 109 R0700	10	
Wall fixing supports (wall mounted)	GDUN-SWF4	1SKU 054 508 R1008	4	
Document holder (bag A4)	GDUN-SBOLA	1SKU 054 508 R2010	1	
UNIKIT busbar insulator 10x30	GDUN-SBRIB	1SKU 056 606 R1030	3	
General internal holder, big size 6-holes	GDUN-SSDS07	1SKA 516 000 R0700	10	0.25
General internal holder, middle size 4-holes	GDUN-SSDS04	1SKA 516 000 R0400	15	0.15
General internal holder, small size 3-holes	GDUN-SSDS03	1SKA 516 000 R0300	20	0.10
General back plate	GDUN-SSDS10	1SKA 516 000 R1000	1	1.00

# Distribution Enclosures

## UNIKIT

### Ordering Example



**UNIKIT empty, with busbar 400 A provision to fit incomer T5 - 400A MCCB and qty. 8 TPN T1N-160 A MCCB's as outgoing. 3-Indication lamps with fuses and measuring instruments (3 Ameters, 1 Voltmeter + Selector volt)**

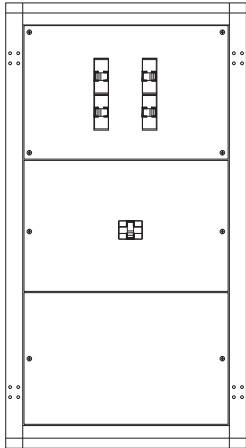
- |  |              |
|--|--------------|
| Main busbar 400A vertical, middle location | GDUN-A408T1M |
| Neutral bar 400A                           | GDUN-A4NB    |
| Earth bar 400A                             | GDUN-A4PEB   |
| Switch bar for T5-400A                     | GDUN-ACBVT5  |

# Distribution Enclosures

## UNIKIT

### Complete enclosed solutions

We have provided below a set of standard solutions using the UNIKIT enclosure system.



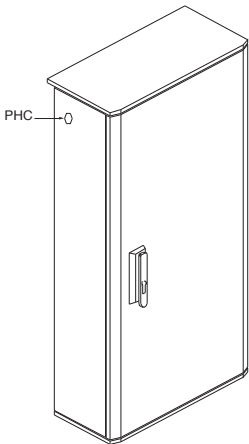
#### Load center distribution:

Complete with incoming and outgoing MCCB breakers, earth, neutrals and accessories

#### Inside components:

Incoming MCCB (T3)-250A or T5-400/630A  
Outgoing MCCB (T1)-up to 160A

Rated Current A	Outgoing ways	Dimensions H x W x D mm	Ordering details		Weight kg
			Type Code	Type No.	
250	4	1000 x 700 x 300	GDUN25-4LC4	1SKU 404 152 C1024	
400	6	1300 x 700 x 300	GDUN40-5LC6	1SKU 406 152 C1024	
630	8	1900 x 700 x 300	GDUN63-6LC8	1SKU 408 152 C1024	



#### Street lighting:

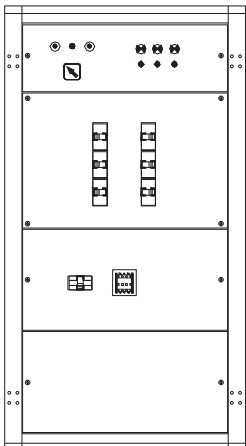
Standard street lighting solution via manual or automatic control with photo cell.

The photo-cell is activated when the illumination is less than 35 Lux within 30-60 sec. and turned automatically OFF when illumination is more than 125 Lux within the same time period.

#### Inside components:

Incoming MCCB T1-160A with contactor A95  
Outgoing MCCB T1-up to 160A

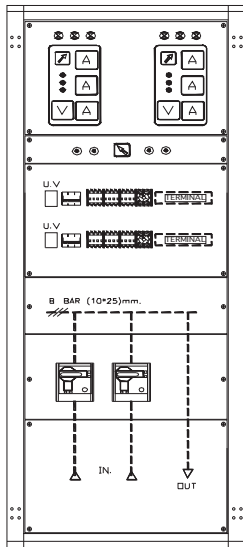
Rated Current A	Outgoing ways	Dimensions H x W x D mm	Ordering details		Weight kg
			Type Code	Type No.	
160	6	1300 x 700 x 300	GDUN16-5SLG6	1SKU 506 152 C1022	



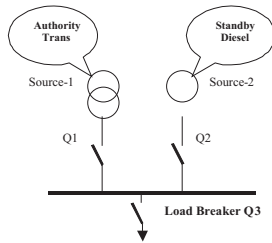
# Distribution Enclosures

## UNIKIT

### Complete enclosed solutions (continued)



F.V. Without Outer Door



#### ATS-Automatic transfer switch:

Automatic transfer of power source between the utility network and standby generation.

#### Sequence of Operation:

Only one source is "ON" in normal case the main source "for example the authority network transformer" [Q1].

- A standby source "for example standby diesel generator" is ready for any emergency due to power failure in the main source. [Q2]
- After the recovery of main source [Q1], the standby source is shut down and the main source gets its function as well.
- The function can expand to Start/Stop diesel through one extra contact.
- Scheduled running test for the diesel to ensure that it will be ready to run at emergency situations.

#### Inside components:

- Incoming MCCB T3-250A with motor and mechanical interlock
- Outgoing to the customer from busbar

Rated Current A	Dimensions H x W x D mm	Ordering details		Weight kg
		Type Code	Type No.	
250	1900 x 700 x 300	GDUN25-6ATS	1SKU 600 152 C1026	



#### Battery charger BC 130A:

The charger is intended to charge Ni-Cd and lead-acid batteries. The batteries achieve the largest service life when remaining at rest in charge condition. The resting condition will be realized if the rectifier device takes over the load only in case of mains failure, this operation method is called stand by parallel operation.

#### Main features:

- Soft start on power-up.
- Extra stability for active loads.
- Peak sensing current limit.
- Reduced levels of ripples and harmonics.
- The same control module set for whole range.
- Extensive range.
- More standard features and alarm functions.

#### Specifications:

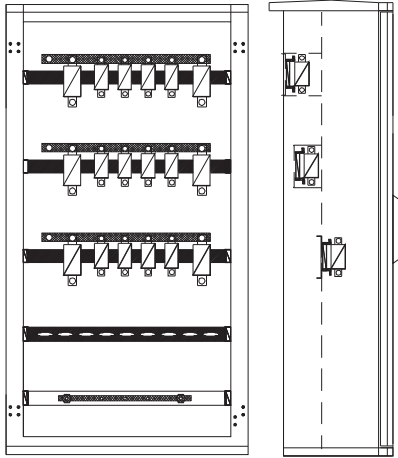
Input voltage	:3-phase 380 V +/- 20%, 50Hz
Frequency	:(47-63 Hz steady state)
Output nominal battery voltage	: 110V
Adjustment range; float charging	:90 to 140V set. At 127V
Adjustment range; boost charging	:110 to 165V set. At 140V
Adjustment range; manual or commissioning	:130 to 170V

Rated Current A	Dimensions H x W x D mm	Ordering details		Weight kg
		Type Code	Type No.	
130	1900 x 700 x 300	GDUN13-6CHGR	1SKU 600 152 C1025	

# Distribution Enclosures

## UNIKIT

### Complete enclosed solutions (continued)



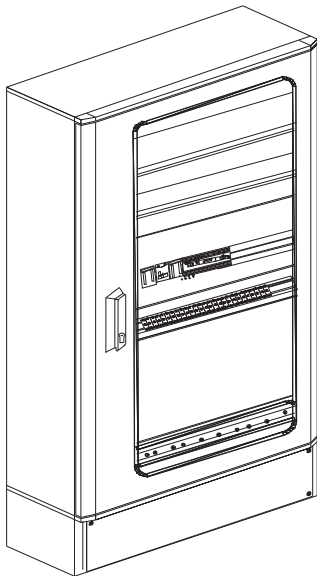
#### Fuse distribution kiosk:

It is considered as one of the most popular applications for outdoor power distribution in utility.

#### Inside components:

Two feeders Incoming HRC 630A NH3  
Four feeders outgoing HRC 250A NH2

Rated Current A	Outgoing ways	Dimensions H x W x D mm	Ordering details		Weight kg
			Type Code	Type No.	
630	4	1300 x 700 x 300	GDUN63-5FU4	1SKU 504 152 C1023	



#### Isolated power supply circuits model IT-system:

It can be used as associated equipments for isolated power supply circuits which is called IT-system where the first letter "I" means insulation from earth or connection of a point (usually the neutral) to earth by means of impedance. And the second letter "T" means the exposed conductive parts connected to earth. This applications is more essential for safety.

#### Inside components:

Isolating transformer  
Isolator with fuse links to protect primary circuit  
2-pole circuit breaker for secondary circuit protection  
Insulating monitoring device IMD  
Isolator with fuse links for IMD protection  
Terminal blocks with wiring trunking.

Dimensions H x W x D mm	Ordering details		Weight kg
	Type Code	Type No.	
1300 x 700 x 300	GDUN-5IT	1SKU 504 152 C1027	

# Contact us

## ABB

7 Dr. Mohamed Kamel Hussein St.,  
El Nozha El Gedeida, Heliopolis. Cairo, Egypt.

Tel.: + 202 2622 4660

Sales Tel.: + 202 2625 1448 - 2625 1446

Fax: + 202 2622 2642

[paul.north@eg.abb.com](mailto:paul.north@eg.abb.com)

[www.abb.com/mea/lowvoltage](http://www.abb.com/mea/lowvoltage)

As part of its on-going product improvement, ABB reserves the right to modify the characteristics or the products described in this document. The information given is not contractual. For further details please contact the ABB company marketing these products in your country.

No:1SK08020C0202 - Printed in Egypt (Feb. 2009) - ein advertising designs

Power and productivity  
for a better world™

