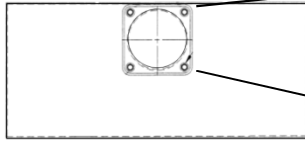
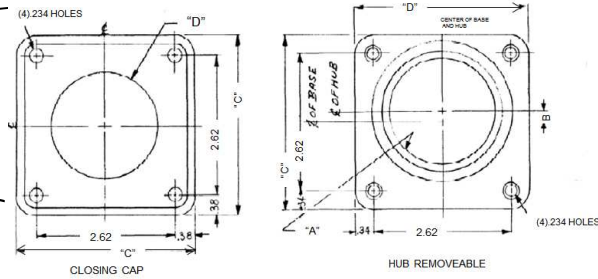


### Top View



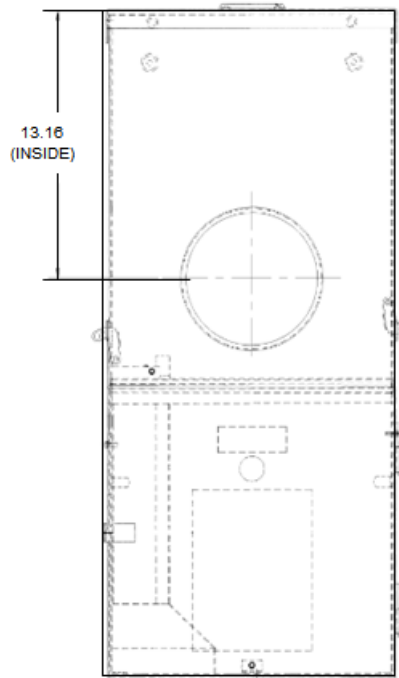
### Hub Dimensions



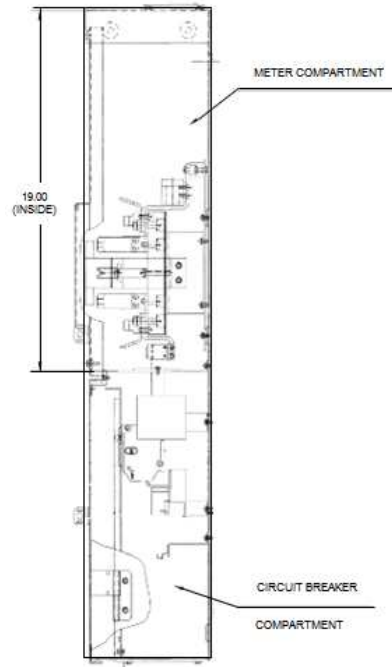
### Available Hubs

CAT. No.	MOD. No.	"A"-THD.	"C"	"E"	"F"	
TC 75	2	1/4 - 14	.81	3.31	NONE	FOR RAINTIGHT DEVICES WITH CAT. NO. ENDING IN RH
TC 100	2	1 - 11 1/4	.89			
TC 125	2	1 1/4 - 11 1/4	.53			
TC 150	2	1 1/2 - 11 1/4	.42			
TC 200	2	2 - 11 1/4	.20			
TC 250	2	2 1/2 - 8	NONE			
TCCP CLOSING CAP	1	NONE	NONE	3.38		
TCCP15 BUSHING PLATE	1	NONE	NONE	3.38	2000	FOR UNDERGROUND METER SOCKET LOAD CENTERS
TCCP20 BUSHING PLATE	1	NONE	NONE	3.38	2500	

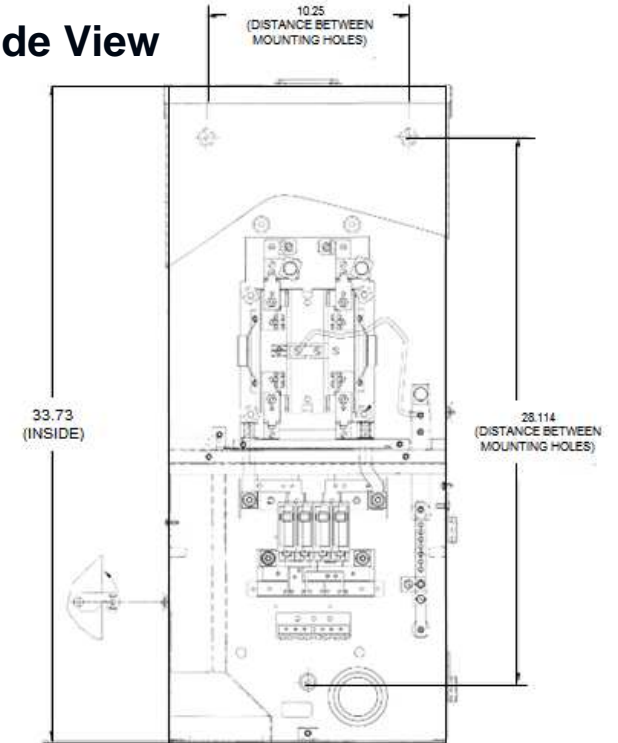
### Front View



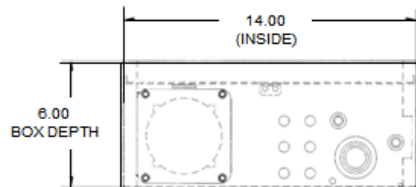
### Side View



### Inside View



### Bottom View



**Main Wire Size**  
#3/0 - 350MCM (Al/Cu)



imagination at work

Main Breaker THQMV - Ringless - 150A 22K - 4/8 Circuits - N3R Encl - Surface Front - UG/OH Incoming Feed - Horn Bypass - XCEL Listed

CAT NO	DWG DATE	REV #
TSMR415CSCU	7/1/2015	01