

We reserve all rights in this document and in the information contained therein. Reproduction, use or disclosure to third parties without express authority is strictly forbidden. © ABB 19

Pos. Läge	R connects förbinder	H connects förbinder
1	12-13	2-15
2		3-15
3		4-15
4		5-15
5		6-15
6		7-15
7		8-15
8		9-15
9A		10-15
9		11-15
10	12-14	12-15
10A		1-15
11		2-15
11A		3-15
12		4-15
13		5-15
14		6-15
15		7-15
16		8-15
17	9-15	
18	10-15	
19		

On-load tap-changer type UZER., UZFR., 19 tap positions, plus/minus switching.

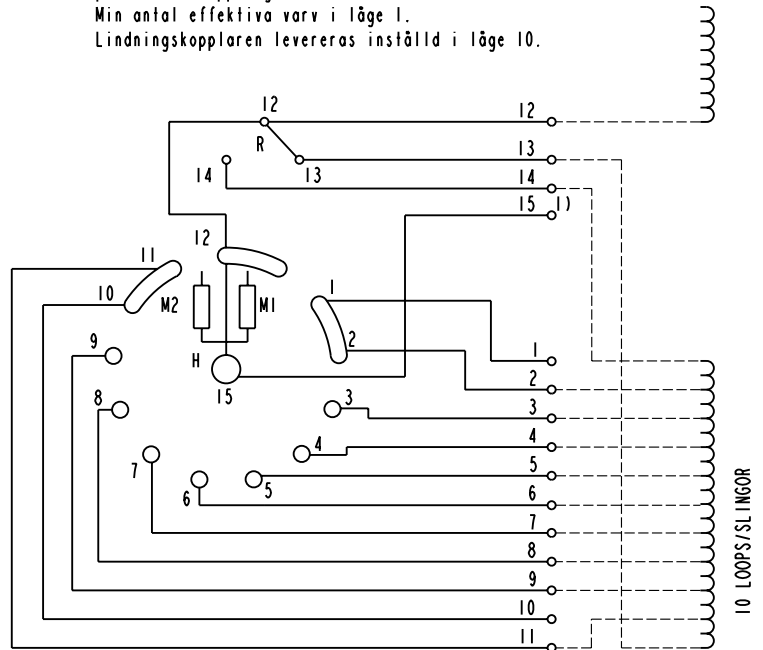
Min effective No. of turns in pos. 1.

The tap-changer is delivered set in pos. 10.

Lindningskopplare typ UZER., UZFR., 19 lägen, plus/minus-koppling.

Min antal effektiva varv i läge 1.

Lindningskopplaren levereras inställd i läge 10.



A position with letter is a through position and gives the same voltage as the normal position.

Läge med bokstav är ett genomslagsläge och ger samma spänning som normalläget.

The tap-changer is shown in pos. 10
Lindningskopplaren visad i läge 10

R Change-over selector
Plus/minus-omkopplare

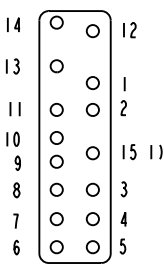
H Main contact
Huvudkontakt

M1, M2 Transition contacts
Motståndskontakter

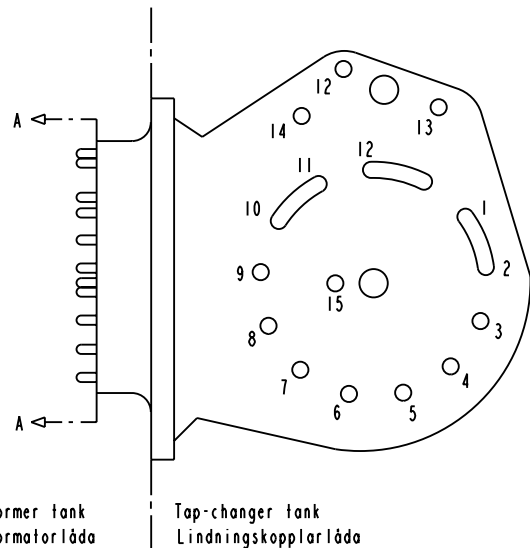
1) Connections between the terminals 15 of the three phases are included in the star-point type.

Förbindningar mellan uttag 15 i de tre faserna ingår i nollpunktsutförandet.

Terminal board
Plint



Section A-A
Sektion A-A



Transformer tank
Transformatorlåda

Tap-changer tank
Lindningskopplarlåda

Sheet	Cont
Year	Week
Dept	
Rev Ind	Revision
Appd	Year
Week	
Design checked by	Design checked by
Form No.	

-	-	-	-
Rev Ind	Revision	Appd	Year
			Week

Accepted for qual control R. Yngvesson	Accepted for prod by	Description (English) CONNECTION DIAGRAM	DATA ORIGINAL
Design checked by B-O. Stenestam	Drawn by L. Bergman	Description (own language) KOPPLINGSSCHEMA	File name 0397-6
Drawing checked by M. Hedlund	Issued by Dept Year Week COM/TKO 97 33	5492 0397-6	Lang
ABB Asea Brown Boveri			Sheet 1
			Rev Ind
			Cont