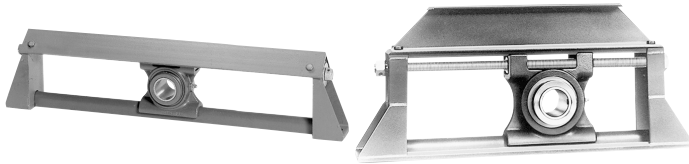


# Installation Manual for DODGE TP and TPHU Take-Up Frame Assemblies

These instructions must be read thoroughly before installation or operation.

**WARNING** To ensure that drive is not unexpectedly started, turn off and lockout or tag power source before proceeding. Failure to observe these precautions could result in bodily injury.

## INSTALLATION:

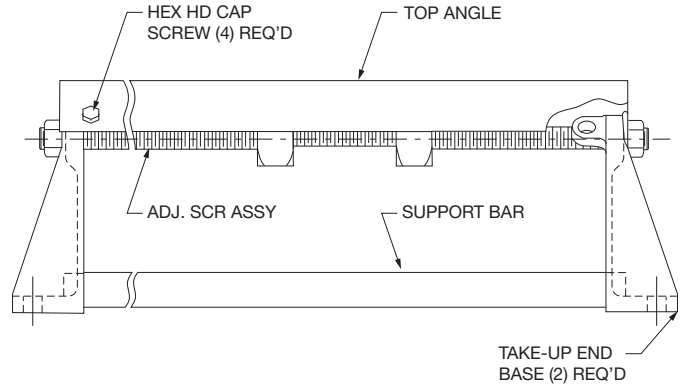


TP

TPHU

1. Make sure that the takeup bearing corresponds to the frame that is to be used.
2. Bolt frame to mounting supports using appropriate bolts. Under extreme loading, a stop bar should be welded to the mounting support in the direction of the load.
3. Remove four hex head bolts from the top angle (TP Frame) or four hex head bolts and nuts from the upper frame assembly (TPHU Frame). Remove the takeup screw and nuts assembly.
4. Place the takeup bearing and shaft assembly on the bottom guide. Adjust the spacing of the square nuts and then reinstall the screw and nuts assembly so that the square nuts fit properly in the takeup bearing.
5. Reinstall either the top angle (TP Frame) or the upper frame assembly (TPHU Frame). Torque the hex head bolts to the appropriate torque, based on whether supplied bolts are Grade 2 or Grade 5. Grade 2 will have no lines on the bolt head. Grade 5 will have 3 lines that form a "Y" shape. (See Table 1).
6. If two takeup frames are used to support a shaft, make sure that the guide rails are parallel to each other to prevent binding and preloading of the bearings. When tensioning using the takeup frames, it is imperative that both frames be tightened either simultaneously, or if individually, the amount of incremental travel should be small to prevent excessive misalignment of one frame relative to the other.

Table 1 - Torque Recommendations		
Bolt Diameter	Torque, Ft. Lbs. Grade 2	Torque, Ft. Lbs. Grade 5
1/2 - 13	50	75
5/8 - 11	100	150
3/4 - 10	175	260

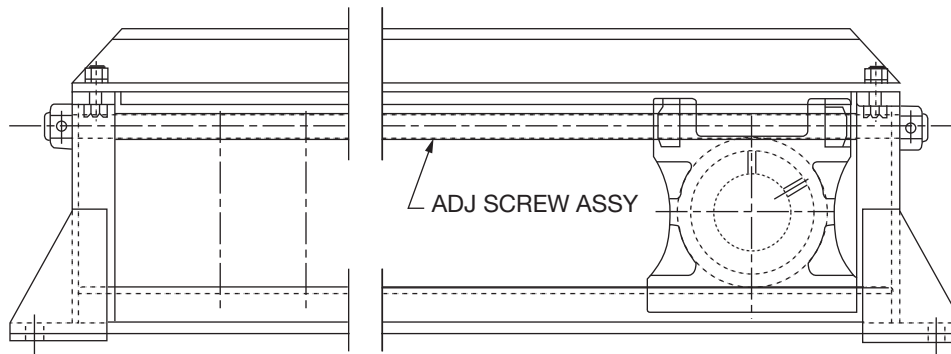


Top Angle Take-Up Frame Part Numbers						
FRAME SIZE	NORM. TRAVEL	COMPLETE ASSEMBLY PART NO.	END BASE (2 REQ'D)	SUPPORT BAR (1 REQ'D)	TOP ANGLE (1 REQ'D)	ADJ. SCREW ASSEMBLY (1 REQ'D)①
TP10	12	036350	012085	012062	012040	389650
	18	036351	012085	012063	012041	389651
	24	036352	012085	012064	012042	389652
TP20	12	036353	012086	012065	012043	389653
	18	036354	012086	012066	012044	389654
	24	036355	012086	012067	012045	389655
TP30	12	036356	012087	012065	012046	389656
	18	036357	012087	012066	012047	389657
	24	036358	012087	012067	012048	389658
TP40	12	036359	012088	012072	012050	389659
	18	036360	012088	012073	012051	389660
	24	036361	012088	012074	012052	389661
TP50	12	036362	012089	012076	012054	389662
	18	036363	012089	012077	012055	389663
	24	036364	012089	012078	012056	389664
TP60	12	036365	012090	012080	012058	389665
	18	036366	012090	012081	012059	389666
	24	036367	012090	012082	012060	389667

① Screw assembly is made up of adj. screw, 2 square nuts, 2 reg. hex nuts, 2 thrust washers & 2 roll pins.

**WARNING** Because of the possible danger to persons(s) or property from accidents which may result from the improper use of products, it is important that correct procedures be followed: Products must be used in accordance with the engineering information specified in the catalog. Proper installation, maintenance and operation procedures must be observed. The instructions in the instruction manuals must be followed. Inspections should be made as necessary to assure safe operation under prevailing conditions. Proper guards and other suitable safety devices or procedures as may be desirable or as may be specified in safety codes should be provided, and are neither provided by Baldor Electric Company nor are the responsibility of Baldor Electric Company. This unit and its associated equipment must be installed, adjusted and maintained by qualified personnel who are familiar with the construction and operation of all equipment in the system and the potential hazards involved. When risk to persons or property may be involved, a holding device must be an integral part of the driven equipment beyond the speed reducer output shaft.





TPHU TAKE UP FRAME PART NUMBERS			
FRAME SIZE	NOM. TRAVEL	COMPLETE ASSEMBLY PART NO.	ADJ. SCREW <sup>①②</sup> ASSEMBLY (1 REQ'D)
TPHU 110	12	013497	389650
	18	013498	389651
	24	013499	389652
TPHU120	12	013990	
	18	013901	
	24	013902	
TPHU130	12	013903	389656
	18	013904	389657
	24	013905	389658
TPHU140	12	013906	389659
	18	013907	389660
	24	013908	389661
	30	013909	389680
	36	013910	389681
TPHU150	12	013511	389662
	18	013512	389663
	24	013513	389664
	30	013514	389685
	36	013515	389686
TPHU160	12	013916	389665
	18	013917	389666
	24	013918	389667
	30	013919	389690
	36	013520	389691
TPHU170	18	013521	
	24	013522	
	30	013523	
	36	013524	
TPHU180	18	013525	
	24	013526	
	30	013527	
	36	013528	

① Screw assembly is made up of adj. screw, 2 square nuts, 2 reg. hex nuts and 2 roll pins.

② Assembled to order.

# BALDOR®

**World Headquarters**

P.O. Box 2400, Fort Smith, AR 72902-2400 U.S.A., Ph: (1) 479.646.4711, Fax (1) 479.648.5792, International Fax (1) 479.648.5895

**Dodge Product Support**

6040 Ponders Court, Greenville, SC 29615-4617 U.S.A., Ph: (1) 864.297.4800, Fax: (1) 864.281.2433

[www.baldor.com](http://www.baldor.com)

© Baldor Electric Company  
MN3045 (Replaces 499729)



All Rights Reserved. Printed in USA.  
5/10 Printshop 2000