



# Lite Panel Pro

Easy to use, designed to connect

# Lite Panel Pro

## More than an HMI for your Switchboard Low Voltage Devices

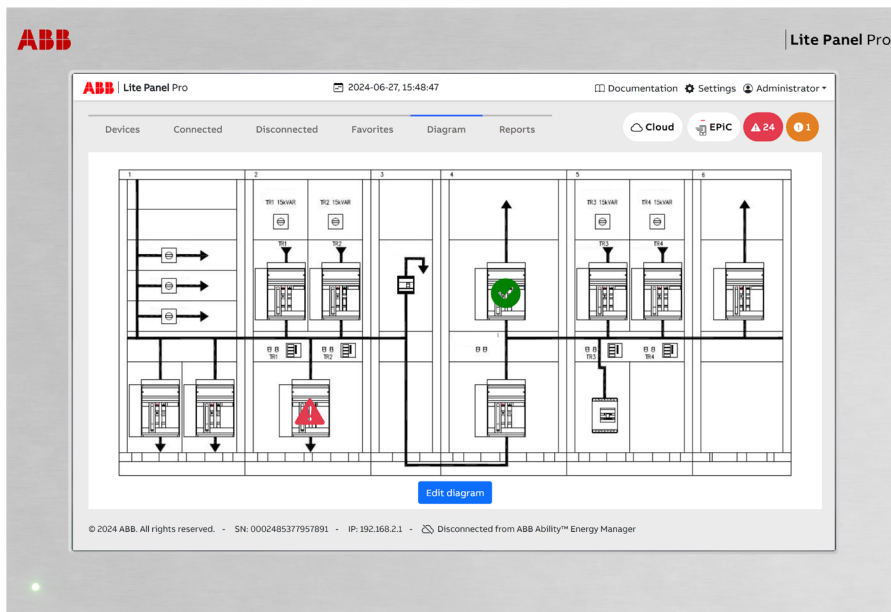


ABB Lite Panel Pro is the state of the art in monitoring your switchboard devices, offering a versatile HMI with a large touchscreen display and an intuitive interface.



### Versatile

Versatile switchboard panel display able to monitor and control connected Low Voltage devices.



### Efficient

Energy efficiency granted by ABB Ability™ Energy Manager ready.



### Flexible

Flexibility to integrate 3<sup>rd</sup> party devices based on templates enabling brown-field installations.



### Innovative

Future-proof hardware supporting product evolution with new software-enabled functionalities.



### Accessible

Ease of use with large display in-line with market requirements.

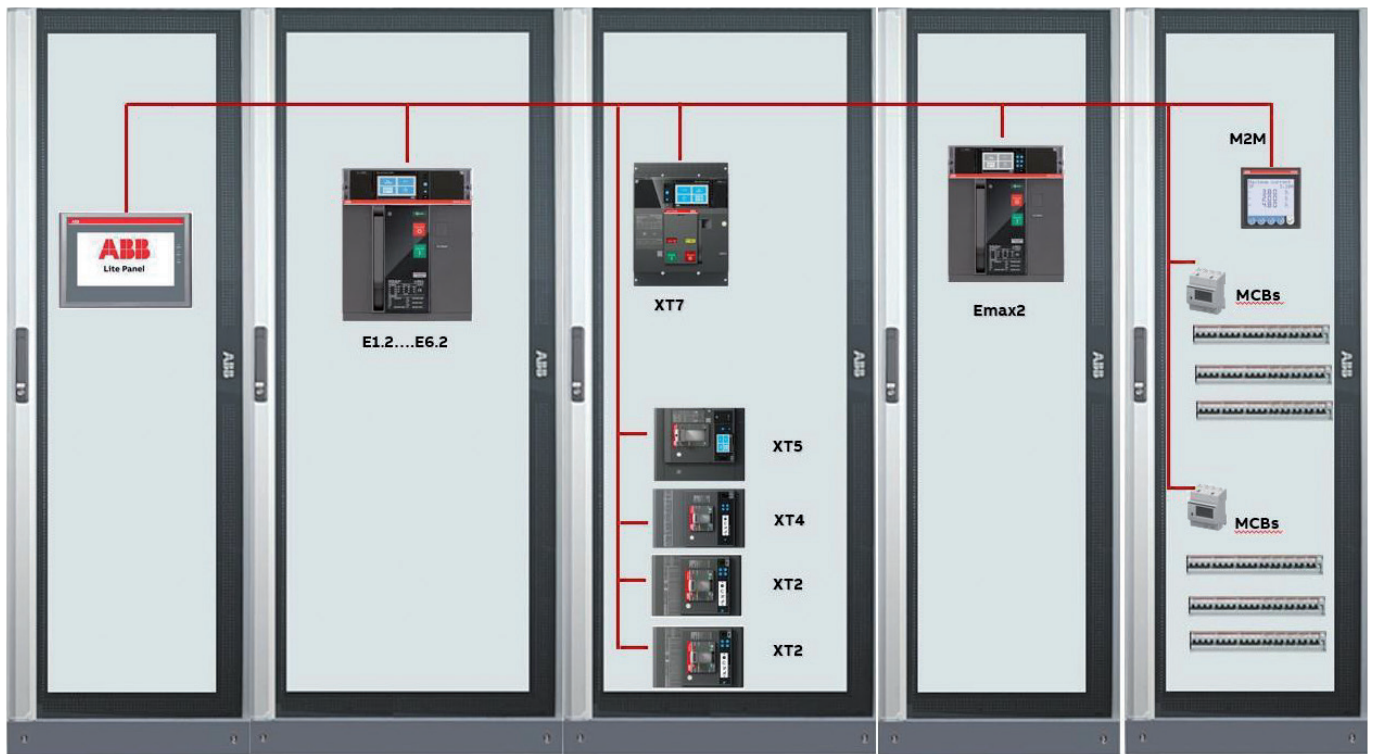


### Easy

Simplified commissioning of Low Voltage products.

# Customer story

## Use case



## Local monitoring and control of Low Voltage products from a switchboard panel display

- **Cloud ready:** ABB Ability™ Energy Manager.
- **Native support** of ABB Low Voltage products.
- **Support of third -party devices** based on templates.
- **Compatible** with local supervision systems (SCADA, BMS).
- **Global market coverage** enabled by IEC and UL certification.
- **Simplified commissioning** via HMI or digital tools (browser, EPiC).

# Architecture

## Example of typical architecture



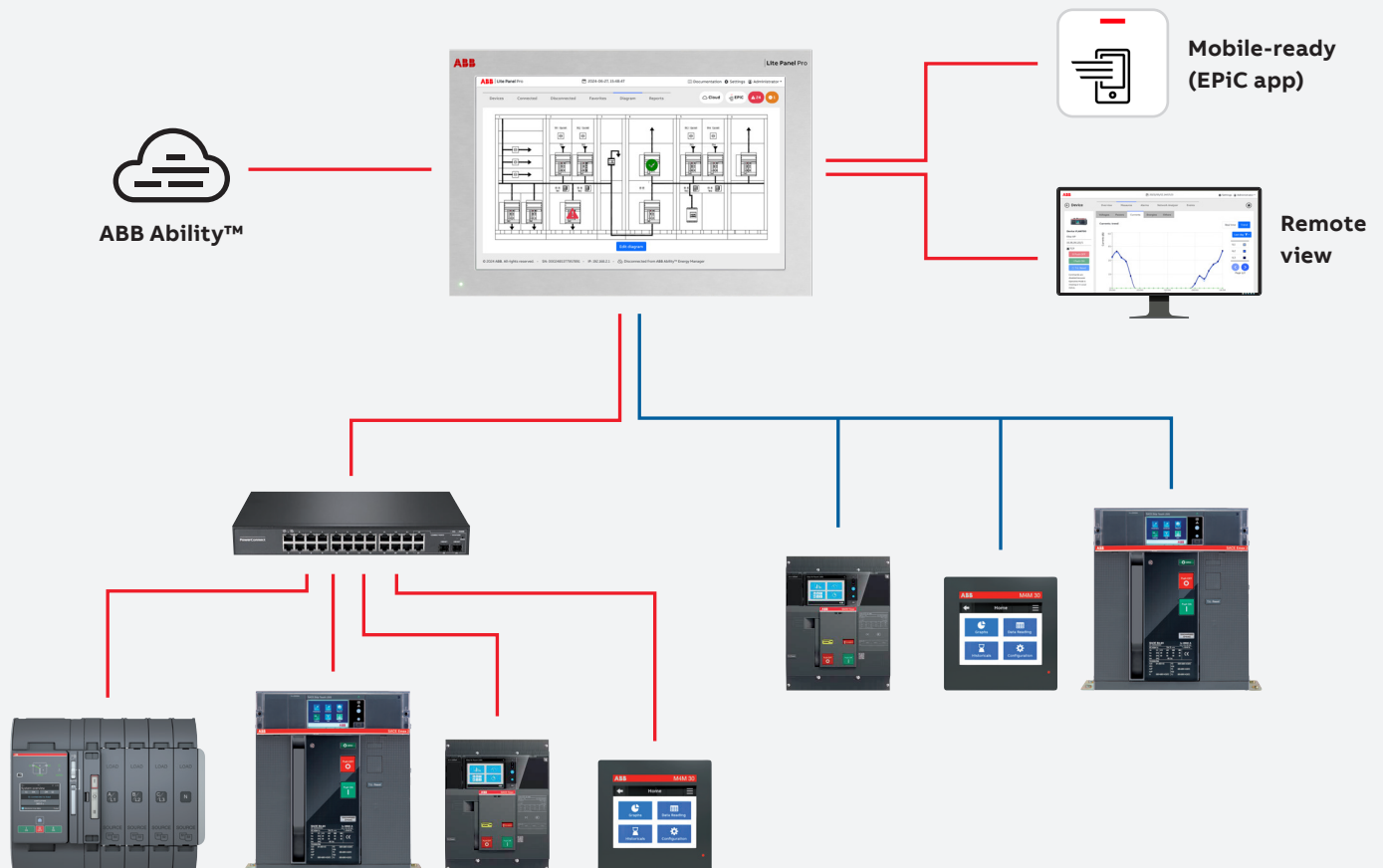
**Monitoring of ABB devices** via Modbus TCP and RTU is supported, as well as third-party devices via templates.



Lite Panel Pro can connect to **ABB Ability™ Energy Manager** without the need of additional hardware.

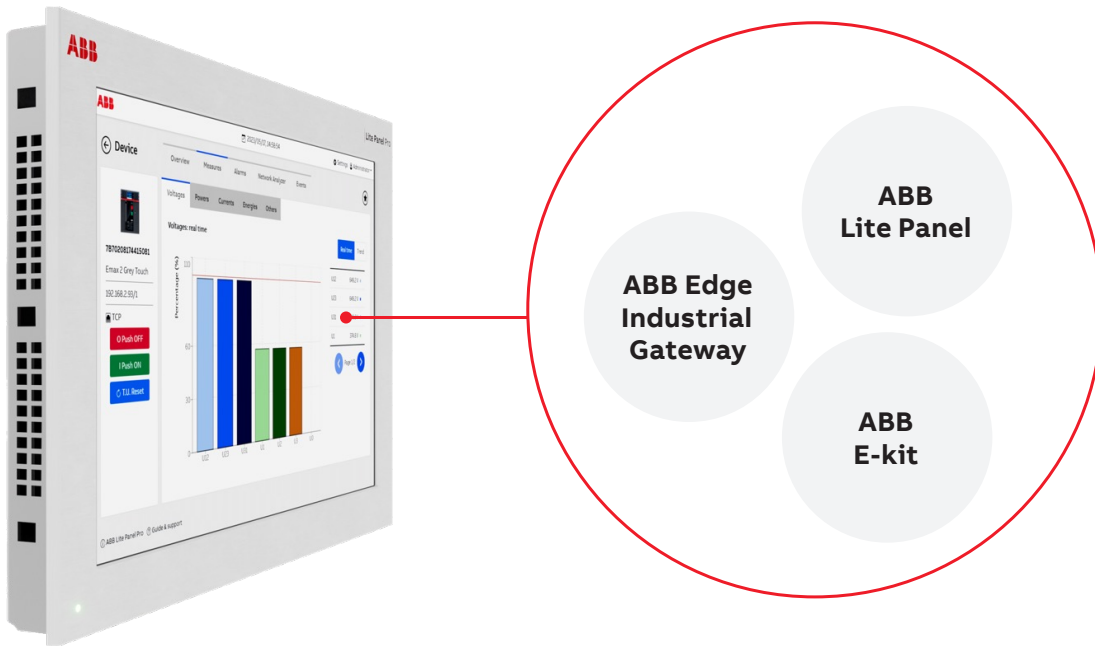


**Local supervision systems** are supported via the protocol translation functionality (Modbus RTU to TCP).



# Key Functionalities

One Panel, a multitude of features



## From Local Device Monitoring to Energy Management in the cloud



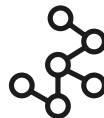
### Integrated webserver

All HMI functionalities can be accessed remotely from any computer on the same network for a more convenient operation.



### Reports

On-demand and scheduled reports are available (daily/weekly/monthly).



### Single Line Diagram

Users can upload a single line diagram and tag connected devices to keep an eye on the whole switchboard.



### Cloud ready

Provisioning of all connected devices to ABB Ability Energy Manager is possible directly from the panel, without the need for extra hardware (gateway).



### Mobile ready

EPiC Mobile App is supported via the provided WiFi dongle.



### Local data storage

Data from connected field devices is saved onboard and available for user consultation at any time.



### 3° party device support via templates

Brownfield installations featuring non-ABB devices are supported using configurable device templates.



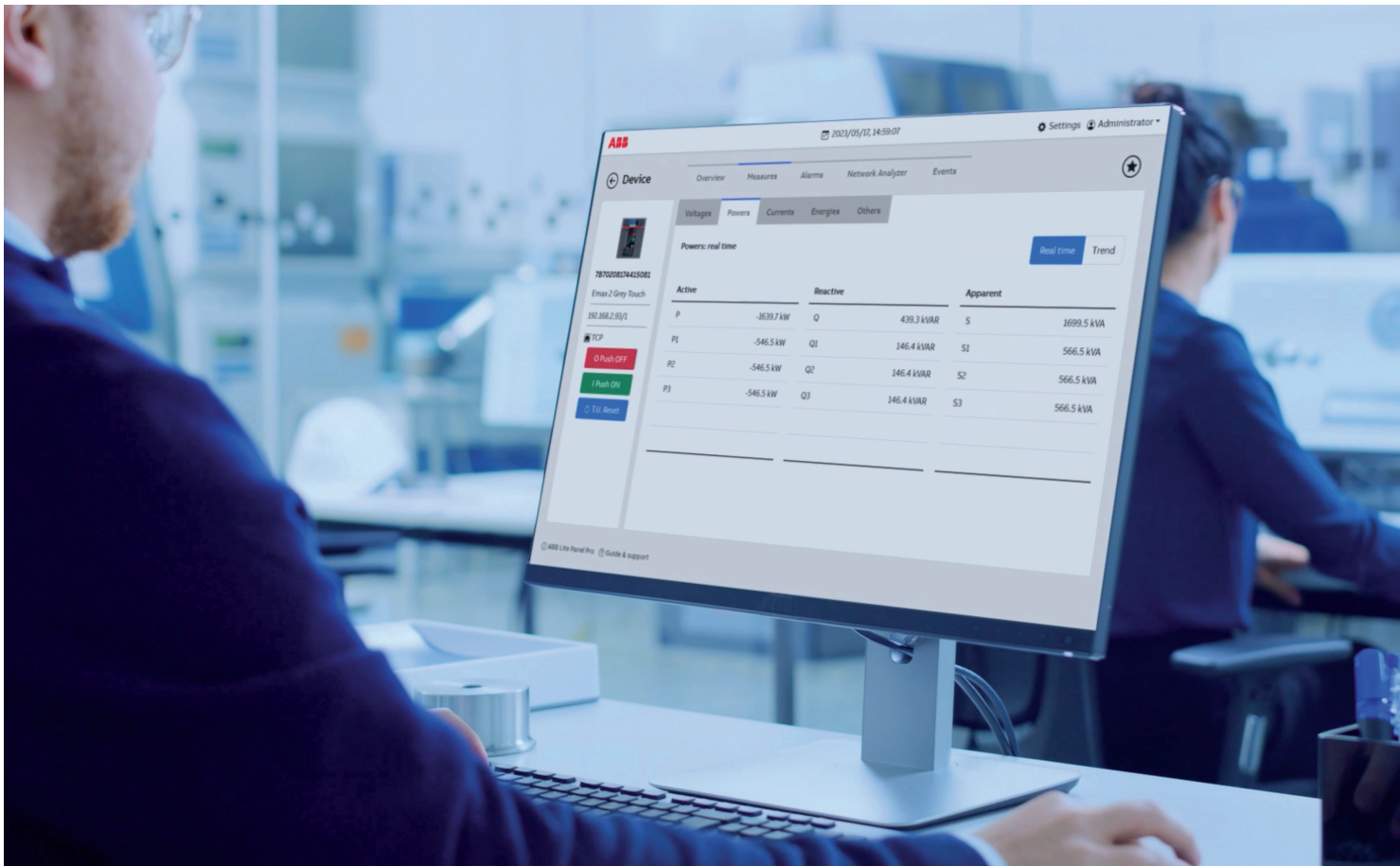
### Protocol translator

Modbus RTU devices connected to the panel are rendered available for integration with 3rd party systems (e.g. SCADA, BMS) via Modbus TCP.



# Key Functionalities

## Simplified commissioning & Real-time monitoring



\* Most ABB Low Voltage devices are compatible

### Support of up to 90 devices (TCP+RTU)

Out of which max 30 Modbus RTU and 20 third party devices.

### Protocol translator

All devices connected via Modbus RTU to Lite Panel Pro can be reached via Modbus TCP from external systems (ex. SCADA, BMS).

### Remote operation

Remote opening and closing of ABB breakers and switches.

### Simplified commissioning

Automatic scanning and identification of ABB devices\*.

### Real-time monitoring

Voltages, currents, power, energy, harmonics, frequency, power factor, alarms & warnings, etc.

### Historical data storage and visualization

At least 1 year of data storage for 90 devices, more when less devices are connected.

## Supported devices

Further device support will be added via FW upgrade in the coming months

Device Family	Models/Electronic unit supported
Emax 2	Ekip LCD, Ekip Touch
Ekip Up/Ekip Up+	Ekip Touch
New Emax	PR122, PR123, PR123/DC
Tmax XT	Ekip LSIG, LSI, M-LRIU, E-LSIG
Tmax XT2/XT4/XT5/XT7	Ekip Touch
Tmax T4/T5/T7	PR223DS, PR223EF
Tmax T4	PR222/DS
Tmax T5	Ekip E-LSIG
Tmax T7	PR332, PR333
TruOne®	LCD, Touch
Slim line XR ITS 2.1	
Ekip Signaling Modbus TCP	
BM300	
IM300-U, IM300-I	
IM301/IM302/IM303	
EM400	
M2M	RTU, TCP
M4M	20, 30
EQMeter	



### Documentation and website

- [Website](#)
- [User Manual](#)
- [Kit sheet](#)
- [EU Declaration of Conformity](#)
- ["How to" Video \(~5min.\)](#)
- [Video Tutorial \(~25min.\)](#)



---

**ABB SACE**

Via Pescaria, 5  
24123, Bergamo (BG)  
Italy

**abb.com**

