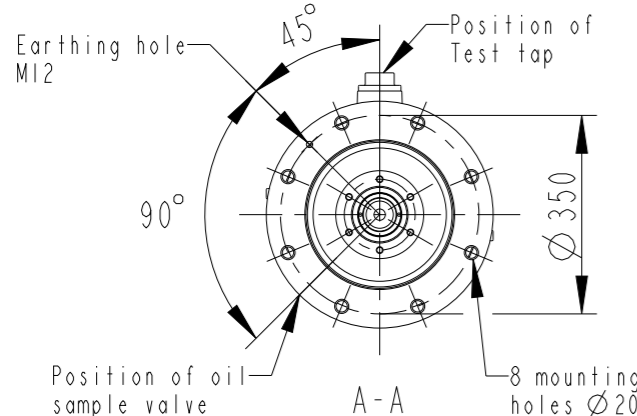
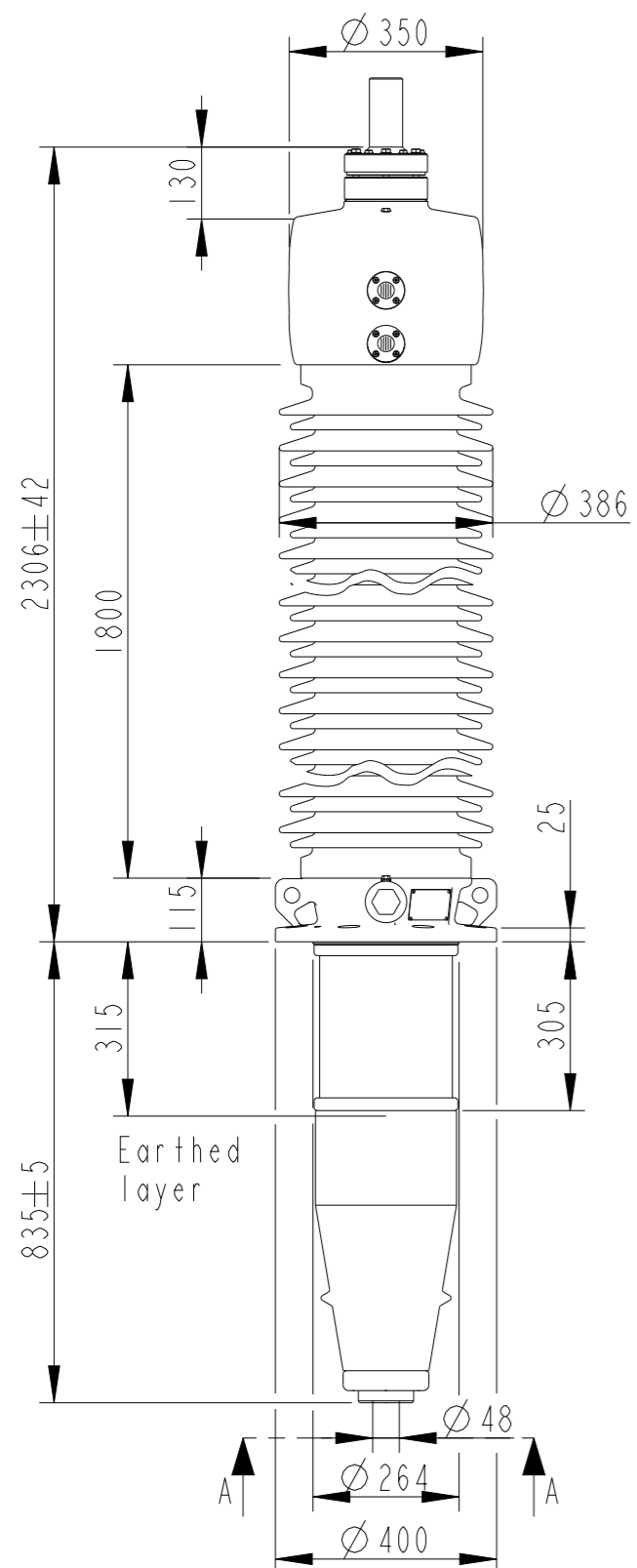


This document is issued by means of a computerized system. The digitally stored original is electronically approved. The approved document has a date entered in the "Approved"-field. A manual signature is not required.

The information contained in this document has to be kept strictly confidential. Any unauthorized use, reproduction, distribution or disclosure to third parties are strictly forbidden. ABB reserves all rights regarding Intellectual Property Rights. © Copyright 2013 ABB. All rights reserved.



Bushing Data:	
Rated Voltage	245 kV
Phase to-earth Voltage	141 kV
Dry Lightning Impulse 1,2/50µs	950 kV
Wet Switching Impulse	650 kV
Wet Power frequency AC	395 kV
Routine test Imin dry 50Hz	395 kV
Rated Current	3150 A
Creepage Distance	6820 mm
Mass	420 kg

Ordering Data:		
<b>BUSHING</b>	COLOUR AIR INSULATOR	
IZSC902170-AAA/BAA	BROWN/LIGHT GREY	
<b>OUTER TERMINAL</b>		
	Max. Rated H2	D2
	Current (A)	(mm)
LF170 073-A	Al	2500 125 60
LF170 073-B	Cu	4000 125 60
LF170 073-G	Cu/Ag	4000 125 60
LF170 073-L	Cu/Sn	4000 125 60
LF170 073-BA	Cu/Ag	3000 125 2"-12UN
LF170 073-AA	Cu	5000 115 96

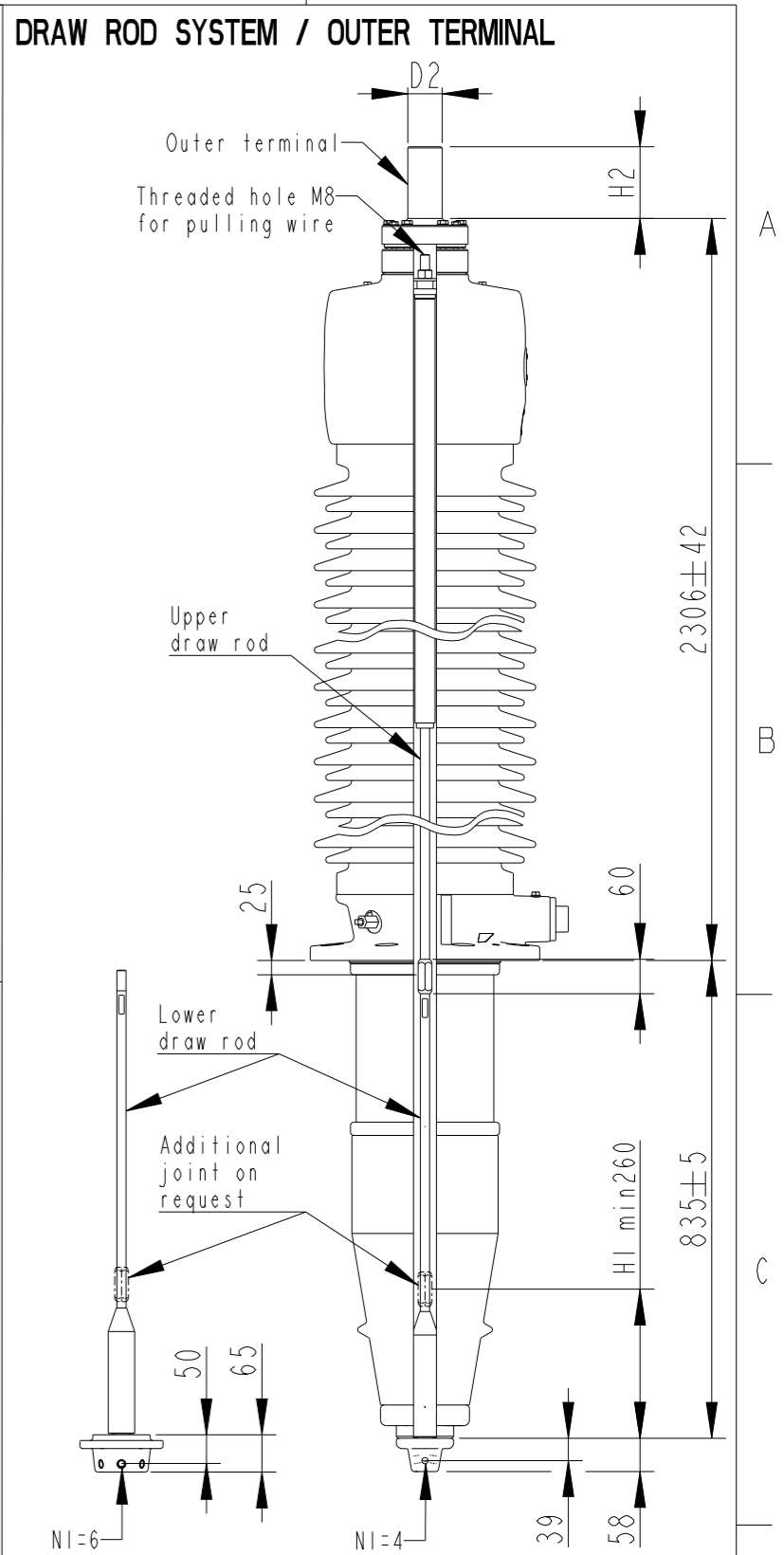
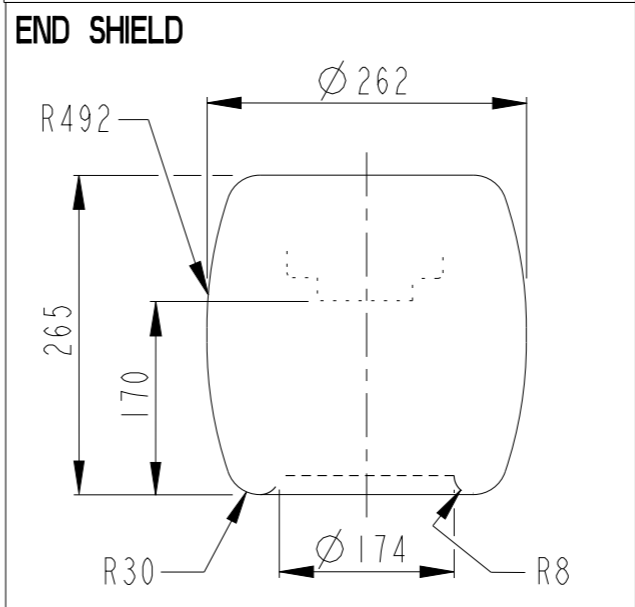
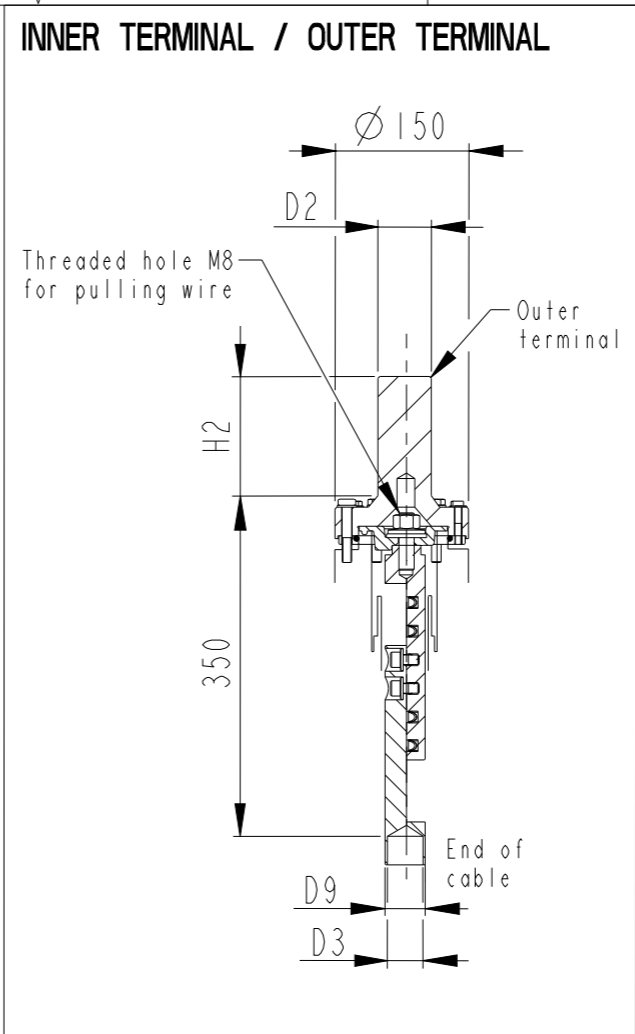
END-SHIELD	
LF170 046-U	EPOXY INSULATED
LF170 046-UP	INSULATED WITH 3 mm PRESSBOARD

DRAW ROD SYSTEM	
LF170 059	LOWER DRAW ROD WITH NI=4 OR NI=6
LF170 057	UPPER DRAW ROD

INNER TERMINAL	
	D3 D9 Cond.area Current (A)
	(mm) (mm)(mm <sup>2</sup> ) IEC IEEE
LF170 056-E	0 *) 45 - -
LF170 056-D	40 45 600 1600 1360

\*) WITH PILOT HOLE D=5

ABB		Ludvika, Sweden	
No.	Um/Uy	kV Ir	A 50/60 Hz
BIL	kV	SIL	kV AC
M	kg	L	mm
C1	pF	Tan δ	x
C2	pF	Tan δ	x



NI=Number of holes M12, equipped with thread insert with screw lock, depth 20, for cable lugs.

Prepared	Kalaivanan R	2017-07-04	Responsible department	PGCO/BK	Title	
Modified by	Kalaivanan R	2017-07-11	Take over department		GOE 950-650-3150-0.3	
Approved by	Natalia Gutman	2017-07-11	Used in product		GOE 950-650-3150-0.3	Language
Revision	H	Drawing display updated				82
					Order	Sheet no.
					Document no.	2751369-309
						No. Shis.
						(1)

