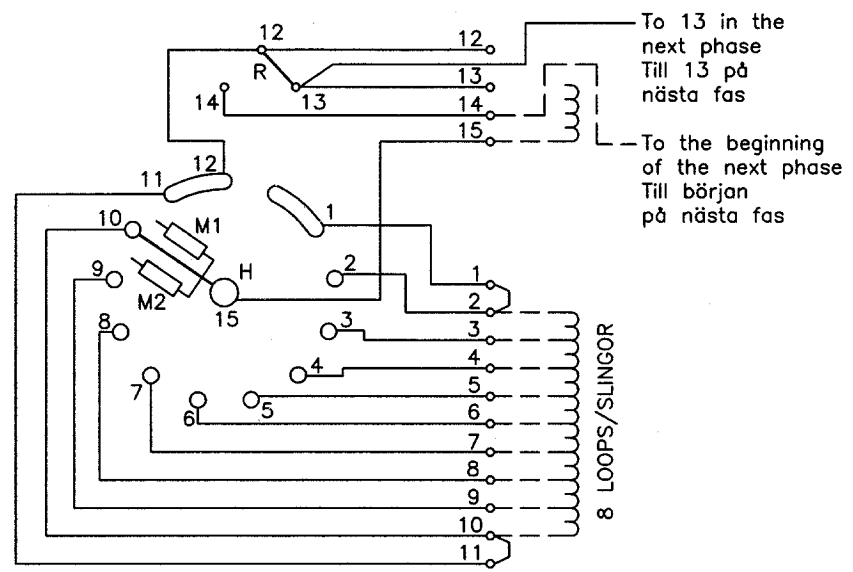


We reserve all rights in this document and in the information contained therein. Reproduction, use or disclosure to third parties without express authority is strictly forbidden. © ABB 19

Pos. Lage	R connects förbinder	H connects förbinder
1	12-13 Y	2-15
2		3-15
3		4-15
4		5-15
5		6-15
6		7-15
7		8-15
8		9-15
9		10-15
9A	12-14 D	11-15
9B		12-15
10B		1-15
10A		2-15
10		3-15
11		4-15
12		5-15
13		6-15
14		7-15
15	8-15	
16	9-15	
17	10-15	
18		

On-load tap-changer type UZEYD, UZFYD, Y/D switching, 9 positions in Y and 9 positions in D.
Max effective No. of turns in pos. 1 and in pos. 10.
The tap-changer is delivered set in pos. 9.

Lindningskopplare typ UZEYD, UZFYD, Y/D koppling, 9 lägen i Y och 9 lägen i D.
Max antal effektiva varv i läge 1 och läge 10.
Lindningskopplaren levereras inställd i läge 9.

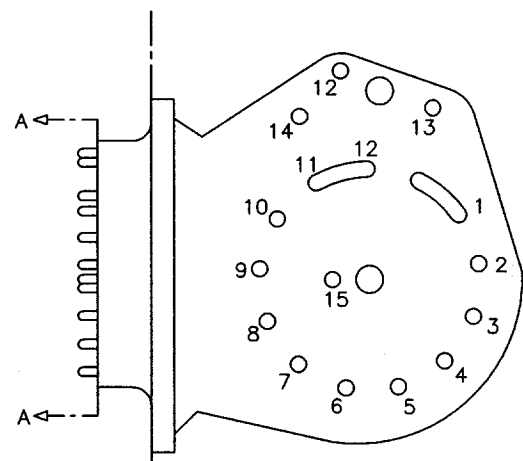
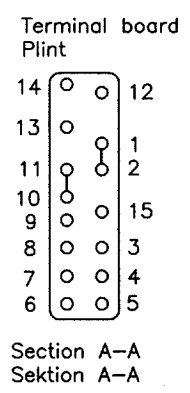


When operating from pos. 9 to 10 and from 10 to 9 the transformer must be de-energized.

Vid manöver från läge 9 till 10 och från 10 till 9 måste transformatorn vara spänningslös.

The tap-changer is shown in pos. 9
Lindningskopplaren visad i läge 9

- R Y/D change-over selector
Y/D-omkopplare
- H Main contact
Huvudkontakt
- M1, M2 Transition contacts
Motståndskontakter



Transformer tank
Transformatorlåda

Tap-changer tank
Lindningskopplarlåda

Sheet	Cont	Year	Week	Dept	Rev Ind	Revision	Appd	Year	Week	Accepted for prod by	Description (English)	DATA ORIGINAL
										R. Yngvesson	CONNECTION DIAGRAM	
Design checked by	M. Hedlund		Issued by Dept		Year	Week	Description (own language)		File name		Lang	
ABB		Asea Brown Boveri		COM/TKO 97 34		97	34	KOPPLINGSSCHEMA		0399-5		1
											Revind	Cont
												-

5492 0399-5